

60.44± Surveyed Acres in Webster County, MS

\$90,500



**SMALLTOWN**  
HUNTING PROPERTIES  
& REAL ESTATE<sup>SM</sup>

Office 769-888-2522



# Property Profile

## The Webster 60.44

### Location:

- Webster County, MS
- Fronts Adams Avenue
- Adjoins the Eupora City Limits

### Coordinates:

- 33.530433, -89.278012

### Property Information:

- 60.44± Surveyed Acres
- Recent Cutover
- Small Pocket of Remaining Hardwoods

### Property Use:

- Residential
- Recreational
- Potential Development

### Tax Information:

- Parcel 073P010805.00: \$31.39 for 2023
- Parcel 0730000801.00: \$165.12 for 2023



**SMALLTOWN**  
HUNTING PROPERTIES  
& REAL ESTATE<sup>SM</sup>

**ADAM HESTER, ALC**

ASSOCIATE BROKER

C: 601-506-5058

O: 769-888-2522

[adam@smalltownproperties.com](mailto:adam@smalltownproperties.com)

4848 Main St. - Flora, MS 39071

[smalltownproperties.com](http://smalltownproperties.com)

Information is believed to be accurate but not guaranteed.





If you are searching for a versatile property, consider the Webster 60.44 in Eupora, Mississippi. Situated in Webster County, this surveyed 60.44± acre tract provides a blank slate and various opportunities. Approximately 8 acres are located in the city limits just off Adams Avenue, while the remaining acreage is in the county. This is a great opportunity for a small development project or a spot to build your forever home with acreage to play on. The terrain offers cutover with a gentle roll, bottomland, and a small patch of standing timber in the southeast corner. Utilities are located at the road. For more information, call Adam Hester today!



**SMALLTOWN**  
HUNTING PROPERTIES  
& REAL ESTATE<sup>SM</sup>

**ADAM HESTER, ALC**

ASSOCIATE BROKER

C: 601-506-5058

O: 769-888-2522

[adam@smalltownproperties.com](mailto:adam@smalltownproperties.com)

4848 Main St. - Flora, MS 39071

[smalltownproperties.com](http://smalltownproperties.com)

Information is believed to be accurate but not guaranteed.





# **SMALLTOWN**

**HUNTING PROPERTIES  
& REAL ESTATE<sup>SM</sup>**

**ADAM HESTER, ALC**

*ASSOCIATE BROKER*

**C: 601-506-5058**

**O: 769-888-2522**

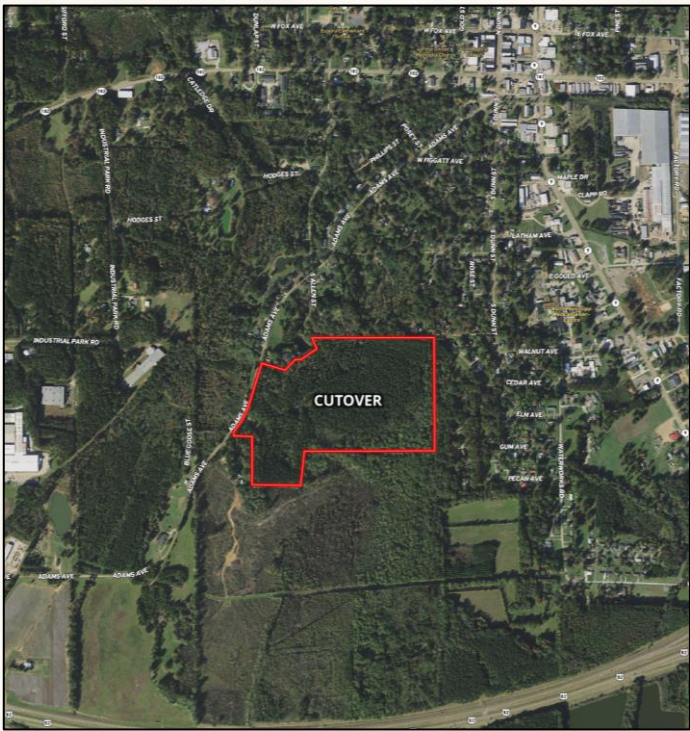
**[adam@smalltownproperties.com](mailto:adam@smalltownproperties.com)**

**4848 Main St. - Flora, MS 39071**

**[smalltownproperties.com](http://smalltownproperties.com)**

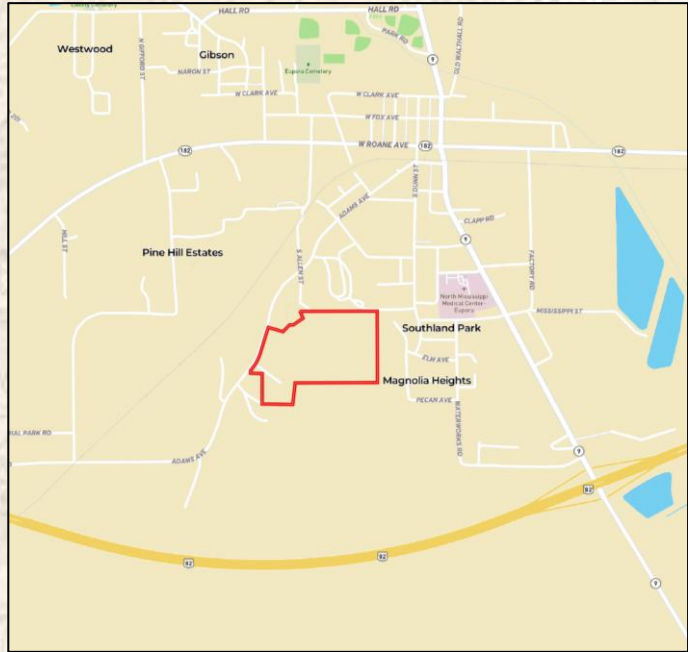
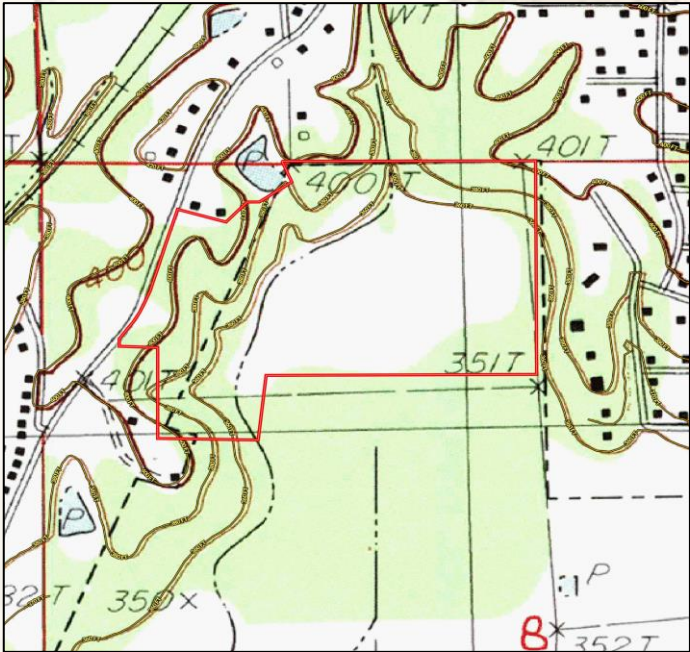
*Information is believed to be accurate but not guaranteed.*





[Google Map Link](#)

[Interactive Map Link](#)



**SMALLTOWN**  
HUNTING PROPERTIES  
& REAL ESTATE<sup>SM</sup>

**ADAM HESTER, ALC**

ASSOCIATE BROKER

C: 601-506-5058

O: 769-888-2522

[adam@smalltownproperties.com](mailto:adam@smalltownproperties.com)

4848 Main St. - Flora, MS 39071

[smalltownproperties.com](http://smalltownproperties.com)

*Information is believed to be accurate but not guaranteed.*