



24± ACRES
MADISON COUNTY, MS
\$360,000



SMALLTOWN
HUNTING PROPERTIES
& REAL ESTATESM

OFFICE (769) 888-2522

THE MADISON 24

PROPERTY PROFILE

LOCATION:

- Robinson Springs Road
Flora, MS 39071
- Madison County
- 5.3± Miles SE of Flora
- 9± Miles W of Madison the City

COORDINATES:

- 32.4938, -90.2557

PROPERTY USE:

- Potential Home Sites
- Deer & Turkey Hunting
- Recreational

PROPERTY INFORMATION:

- 24± Acres
- Gently Sloping Terrain
- Utilities at the Road
- Established Food Plot
- 8± Acres in the Floodplain

TAX INFORMATION:

- TBD



SMALLTOWN
HUNTING PROPERTIES
& REAL ESTATESM

ADAM HESTER, ALC

ASSOCIATE BROKER


C: 601-506-5058

O: 769-888-2522

adam@smalltownproperties.com

4848 Main St. - Flora, MS 39071

smalltownproperties.com

 /10,000+ Followers

Information is believed to be accurate but not guaranteed.

WELCOME TO THE MADISON 24

WELCOME TO THE MADISON 24, THE PERFECT BLEND OF COUNTRY LIVING WITH THE CONVENIENCE OF BEING JUST OUTSIDE THE CITY LIMITS OF MADISON, MS. This 24± acre tract, located off Robinson Springs Road, features elevated ground at the entrance and gently sloping terrain toward the back, creating multiple potential homesites. Utilities are located along the road. Approximately eight acres in the rear lie within the floodplain, making it an excellent spot for hunting and recreational use. A well-placed food plot is already in place, adding to the property's appeal for outdoor enthusiasts. Buildable acreage in the Madison area is becoming a rare find, so act quickly! The final acreage and lines will be surveyed prior to closing.

Call Adam Hester today to schedule a showing of the Madison 24!



SMALLTOWN
HUNTING PROPERTIES
& REAL ESTATESM

ADAM HESTER, ALC

ASSOCIATE BROKER


C: 601-506-5058

O: 769-888-2522

adam@smalltownproperties.com

4848 Main St. - Flora, MS 39071

smalltownproperties.com

/10,000+ Followers

Information is believed to be accurate but not guaranteed.

24± ACRES

MADISON COUNTY, MISSISSIPPI



SMALLTOWN
HUNTING PROPERTIES
& REAL ESTATESM

ADAM HESTER, ALC

ASSOCIATE BROKER


C: 601-506-5058

O: 769-888-2522

adam@smalltownproperties.com

4848 Main St. - Flora, MS 39071

smalltownproperties.com

/10,000+ Followers

Information is believed to be accurate but not guaranteed.

24± ACRES

MADISON COUNTY, MISSISSIPPI



SMALLTOWN

HUNTING PROPERTIES
& REAL ESTATESM

ADAM HESTER, ALC

ASSOCIATE BROKER

C: 601-506-5058

O: 769-888-2522

adam@smalltownproperties.com

4848 Main St. - Flora, MS 39071

smalltownproperties.com

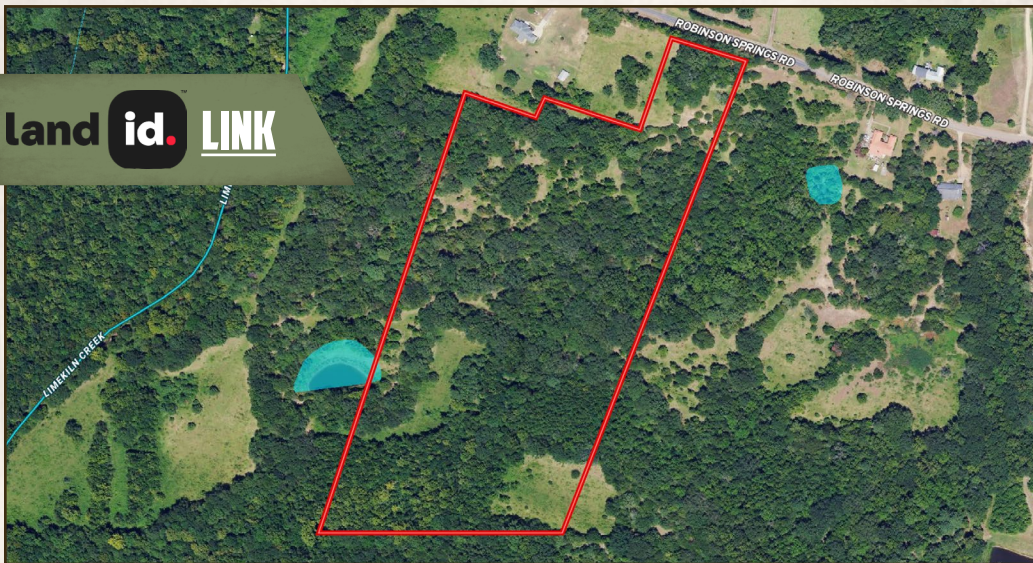
/10,000+ Followers

Information is believed to be accurate but not guaranteed.

24± ACRES

MADISON COUNTY, MISSISSIPPI

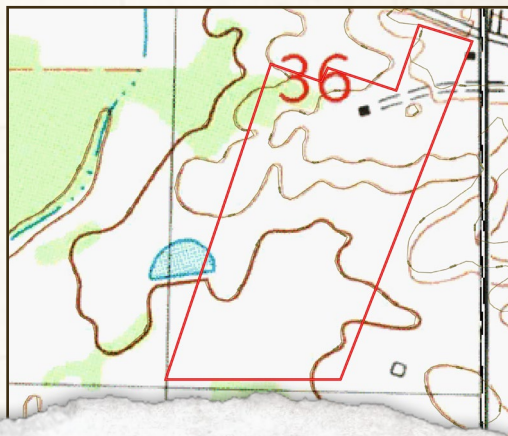
land id. LINK



FLOOD MAP



TOPOGRAPHY MAP



SMALLTOWN
 HUNTING PROPERTIES
 & REAL ESTATESM

ADAM HESTER, ALC

ASSOCIATE BROKER

C: 601-506-5058

O: 769-888-2522

adam@smalltownproperties.com

4848 Main St. - Flora, MS 39071

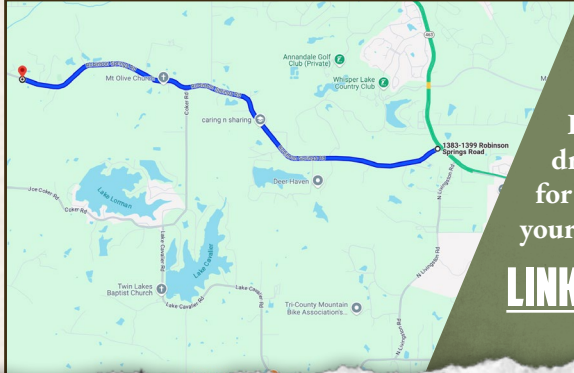
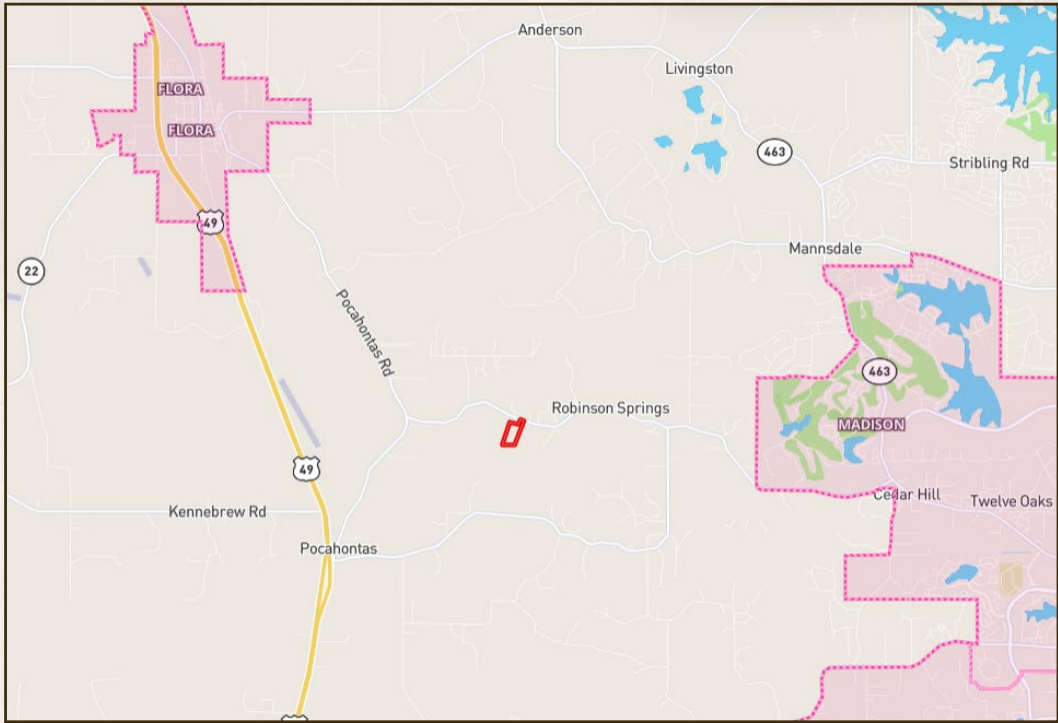
smalltownproperties.com

f/10,000+ Followers

Information is believed to be accurate but not guaranteed.

24± ACRES

MADISON COUNTY, MISSISSIPPI



Directions from Madison, MS: From the intersections of MS-463 and Robinson Springs Road in Madison, drive west on Robinson Springs Road for 4.7 miles and the property will be on your left.

[LINK TO GOOGLE MAP DIRECTIONS](#)



SMALLTOWN
HUNTING PROPERTIES
& REAL ESTATESM

ADAM HESTER, ALC
ASSOCIATE BROKER
C: 601-506-5058
O: 769-888-2522
adam@smalltownproperties.com
4848 Main St. - Flora, MS 39071
smalltownproperties.com

f/10,000+ Followers

Information is believed to be accurate but not guaranteed.