

# North Prong Secluded River Retreat

Carey Road | Lithia, FL

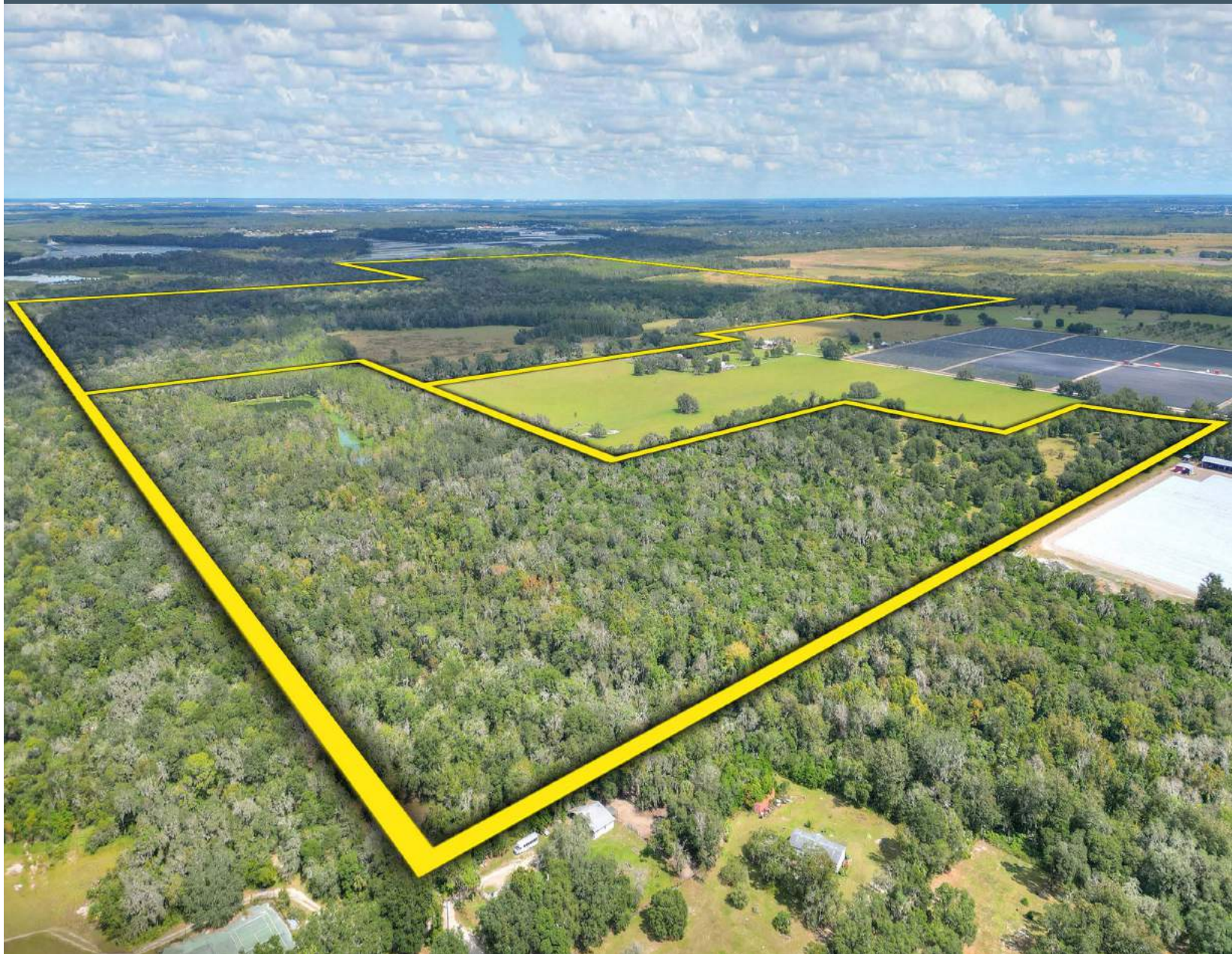
**Fischbach**  
LAND COMPANY





## Property Information

Property Address:	Carey Road, Lithia, FL 33547
Property Type:	Recreational Land
Acreage:	623+/- Acres
County:	Hillsborough
Price:	\$10,279,500 (\$16,500 per Acre)
Site Improvements:	6 Acre Pond
Road Frontage:	317 feet on Carey Road
Property Taxes:	\$15,476.83



[Click for Video](#)

[Click for Website](#)

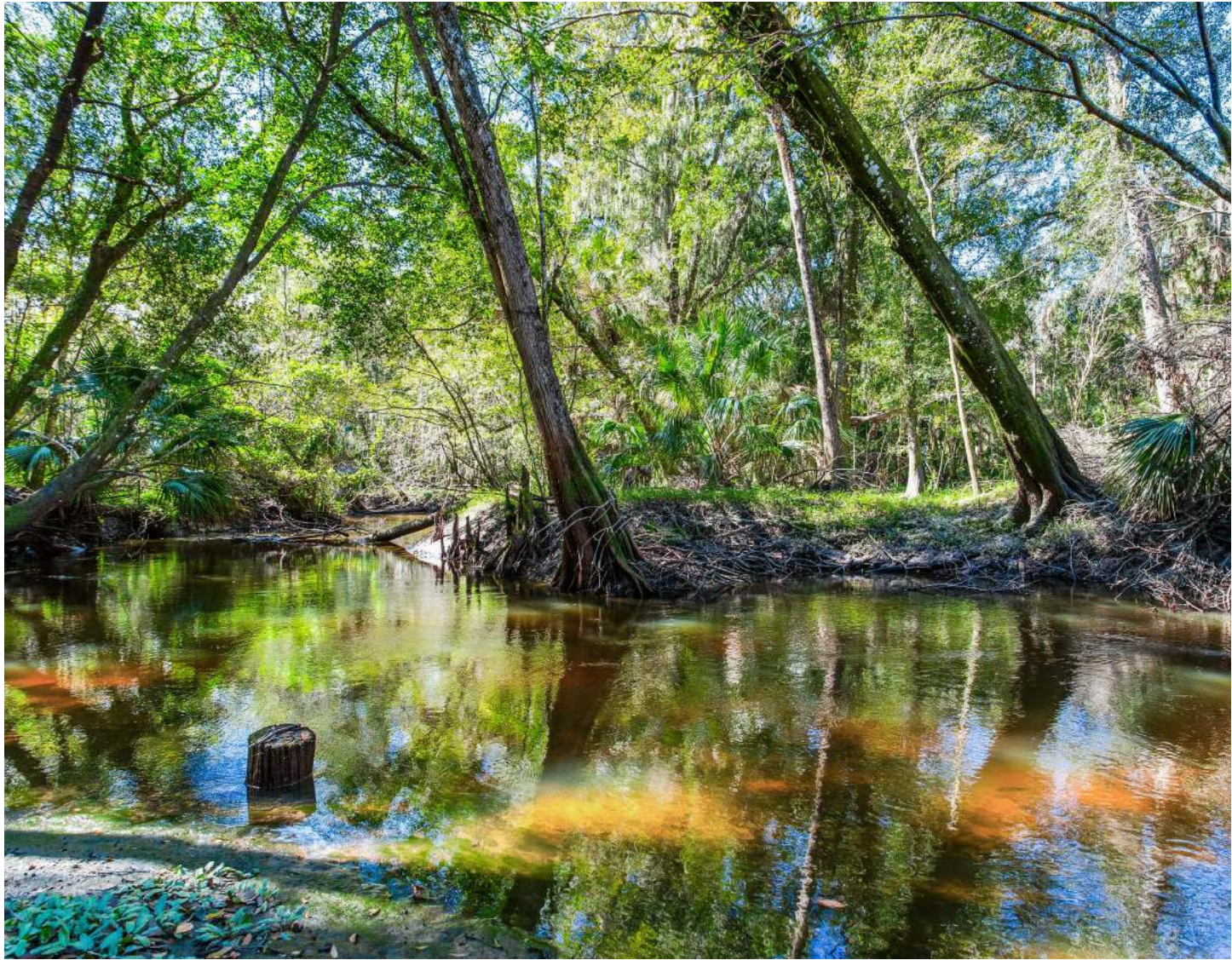


# EXTREMELY RARE! 623 ACRES ON RECREATIONAL LAND IN HILLSBOROUGH COUNTY!

This spectacular piece has it all – woods, open pastures, river frontage, large pond! A truly unique piece welcomes you with a variety of landscapes – perfect for hunting, fishing, camping, exploring or a weekend retreat!







**1.9 MILES**  
of River Frontage on the  
North Prong of the Alafia  
River



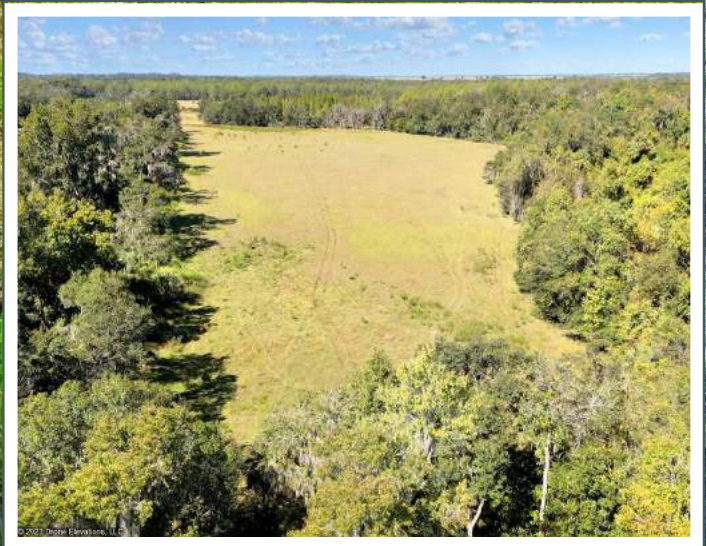
**SIGNIFICANT  
WILDLIFE  
CORRIDOR!**

Large Contiguous Parcel

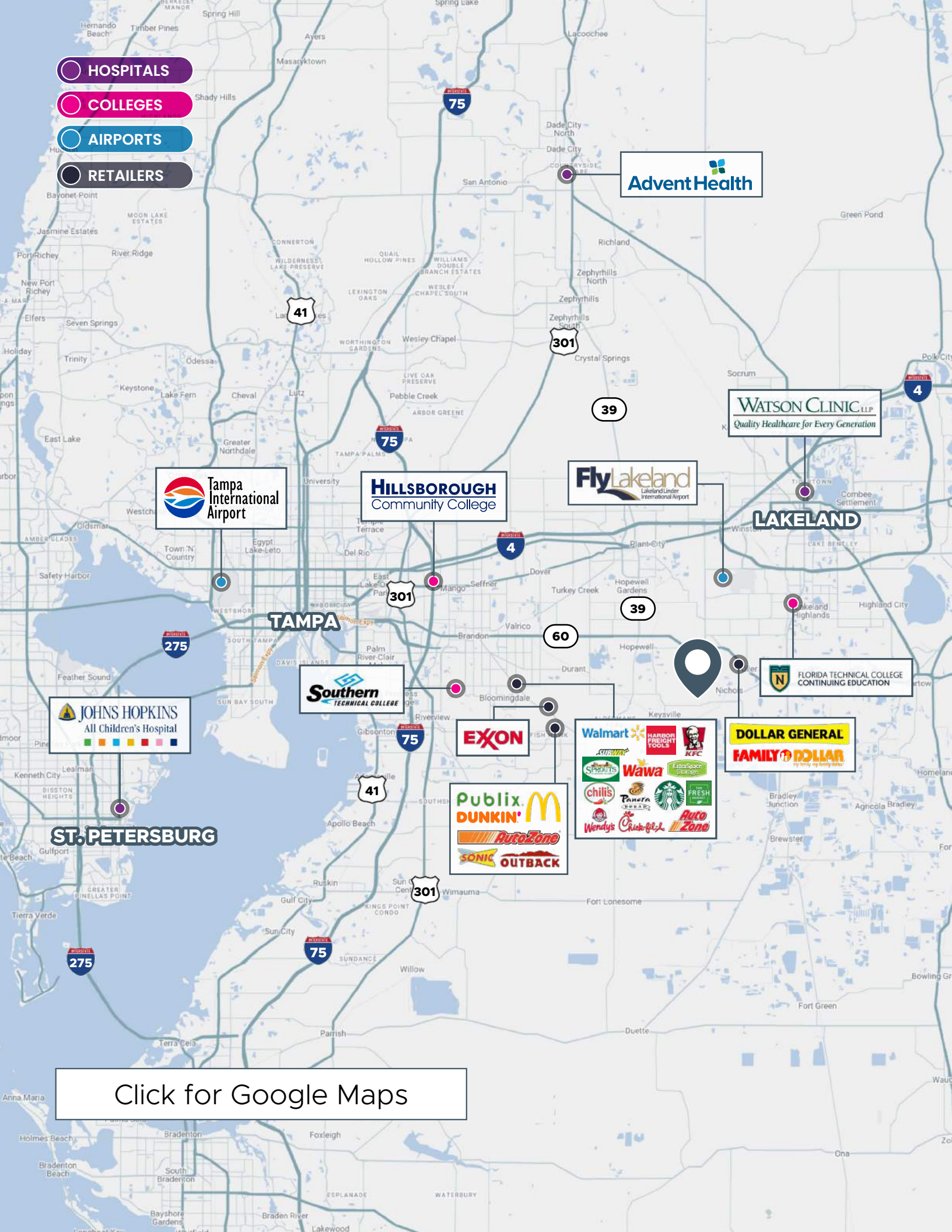




You'll find high and dry land with thriving oak trees, a magnificent pond with cypress lined edges, winding river frontage on the North Prong of the Alafia River and rolling hills of open pastures. Around every corner is a different place to be explored. Combine this with the fact that it is just 10 minutes from State Road 60 with convenient access to Hillsborough and Polk county – you'll see what an amazing find this is!







REPRESENTED EXCLUSIVELY BY:



Reed Fischbach  
Broker  
reed@fischbachlandcompany.com

**Fischbach**  
**LAND COMPANY**  
fischbachlandcompany.com

Fischbach Land Company  
917 S PARSONS AVENUE  
BRANDON, FL 33511  
813-540-1000



# **Fischbach**

---

## LAND COMPANY

