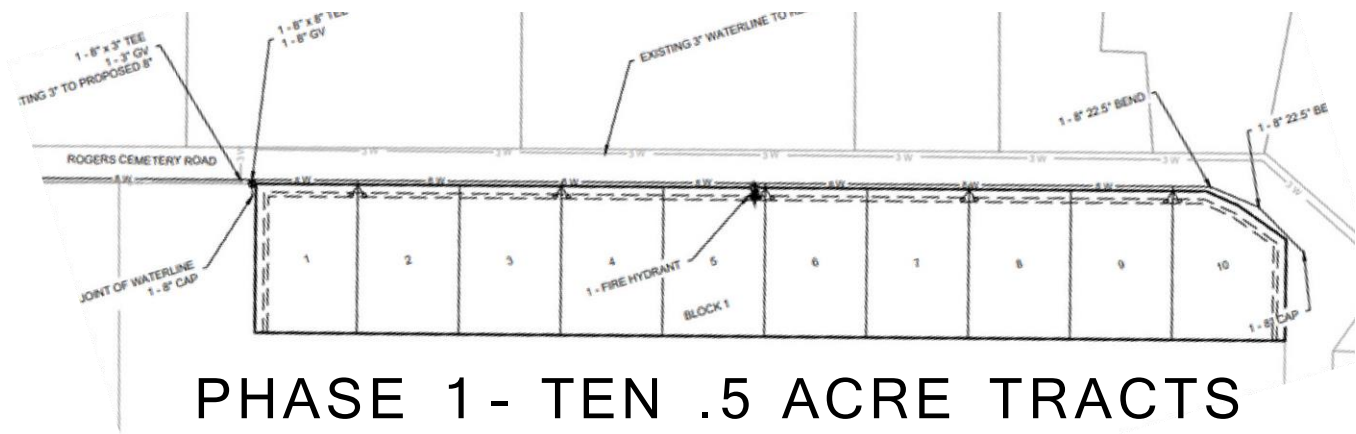




EAGLE LEGACY

ESTATES



PHASE 1 - TEN .5 ACRE TRACTS

ABOUT PROPERTY

Rural, 1/2 acre tracts in Rogers, TX. 2 minutes from Rogers Elementary, 5 minutes to the coming I-14 Corridor, and less than 20 minutes to Temple. Builder friendly with quick and easy permitting, Rogers is full of potential featuring an A Rated School, convenient location (within an hour of Waco, Austin and College Station), and strong sense of community.

PROPERTY DETAIL



- MINIMUM 1,650 SQ FT
- 25%+ MASONRY SIDING
- 330 SQ FT OUTBUILDING ALLOWED



- CITY WATER (\$1500 PER TAP)
- SEPTIC REQUIRED
- ONCOR ELECTRIC



- HOA
- 2.69% TAX RATE
- HIGH SPEED INTERNET AVAILABLE

FOR MORE INFO CONTACT
BENCHMARK REAL ESTATE GROUP- FATHOM | 254-800-5000 | DAMON@BENCHMARKTXRE.COM