

Renovated Starkville Home

Oktober County, MS



519 Dr. Martin Luther King Jr. Dr. Starkville, MS 39759

\$329,000

Take a look at this renovated home in Starkville, Oktober, MS, which would be an ideal investment or forever home opportunity! The home spans three stories and features 2,169 sq ft, three bedrooms, two bathrooms, and a versatile bonus room potentially serving as a fourth bedroom. The house has a three-car carport and is situated on 1.85+/- acres. As you enter this charmingly renovated home, you are led to a spacious living room and sunroom. Descend the stairs to unveil a theatre room and a basement perfect for storage or a game room. Located in a college town, this property presents an exceptional investment with many possibilities. Call Anthony today for your private showing!

Directions from the Campus of Mississippi State University in Starkville, MS: Travel southwest on B S Hood Dr/Moore Road for 0.1 mile. Turn right onto Russell/Stone Blvd and then turn right onto Hwy 12. Travel .7 miles, then take the exit onto Hwy 182 W/ Dr. Martin Luther King Jr. Dr. After 2.1 miles, the house will be on the left. [Click for Google Maps](#)



ANTHONY
STEEN

REALTOR®

Office: 662.441.2500

Cell: 662.645.5151

Anthony@TomSmithLand.com



A Real Estate Expert You Can Trust

TomSmithLandandHomes.com

Information is believed to be accurate but not guaranteed.





ANTHONY STEEN

REALTOR®

Office: 662.441.2500

Cell: 662.645.5151

Anthony@TomSmithLand.com

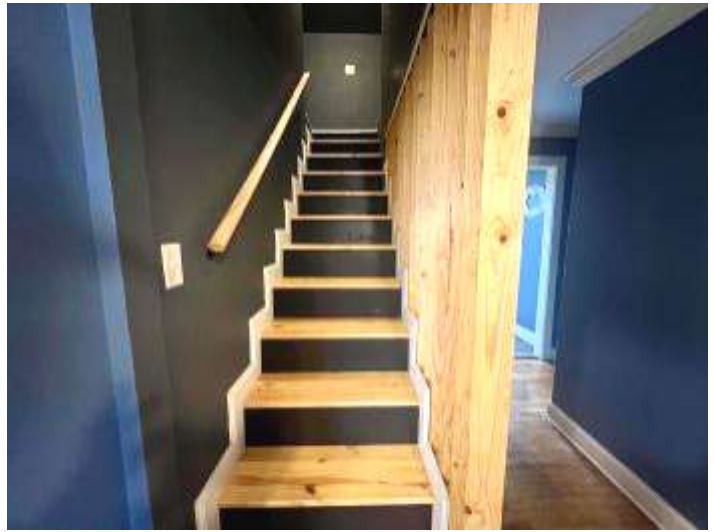


A Real Estate Expert You Can Trust

TomSmithLandandHomes.com

Information is believed to be accurate but not guaranteed.





ANTHONY STEEN

REALTOR®

Office: 662.441.2500

Cell: 662.645.5151

Anthony@TomSmithLand.com

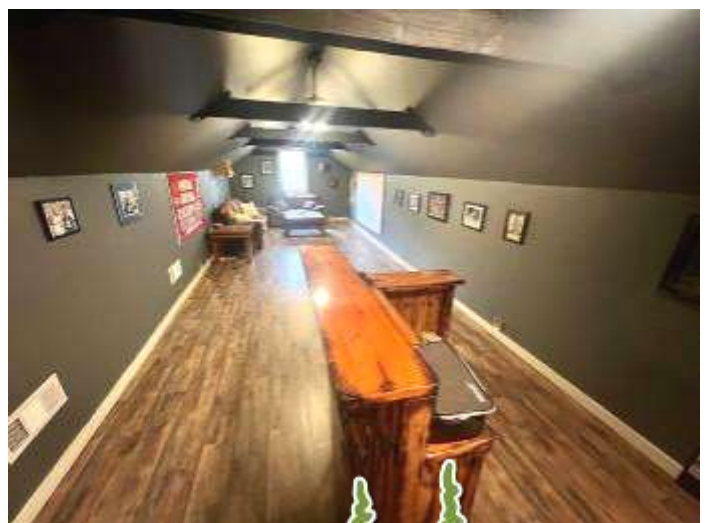


A Real Estate Expert You Can Trust

TomSmithLandandHomes.com

Information is believed to be accurate but not guaranteed.





ANTHONY STEEN

REALTOR®

Office: 662.441.2500

Cell: 662.645.5151

Anthony@TomSmithLand.com



A Real Estate Expert You Can Trust

TomSmithLandandHomes.com

Information is believed to be accurate but not guaranteed.



AERIAL MAP



[Click for Interactive Map](#)

ANTHONY STEEN

REALTOR®

Office: 662.441.2500

Cell: 662.645.5151

Anthony@TomSmithLand.com



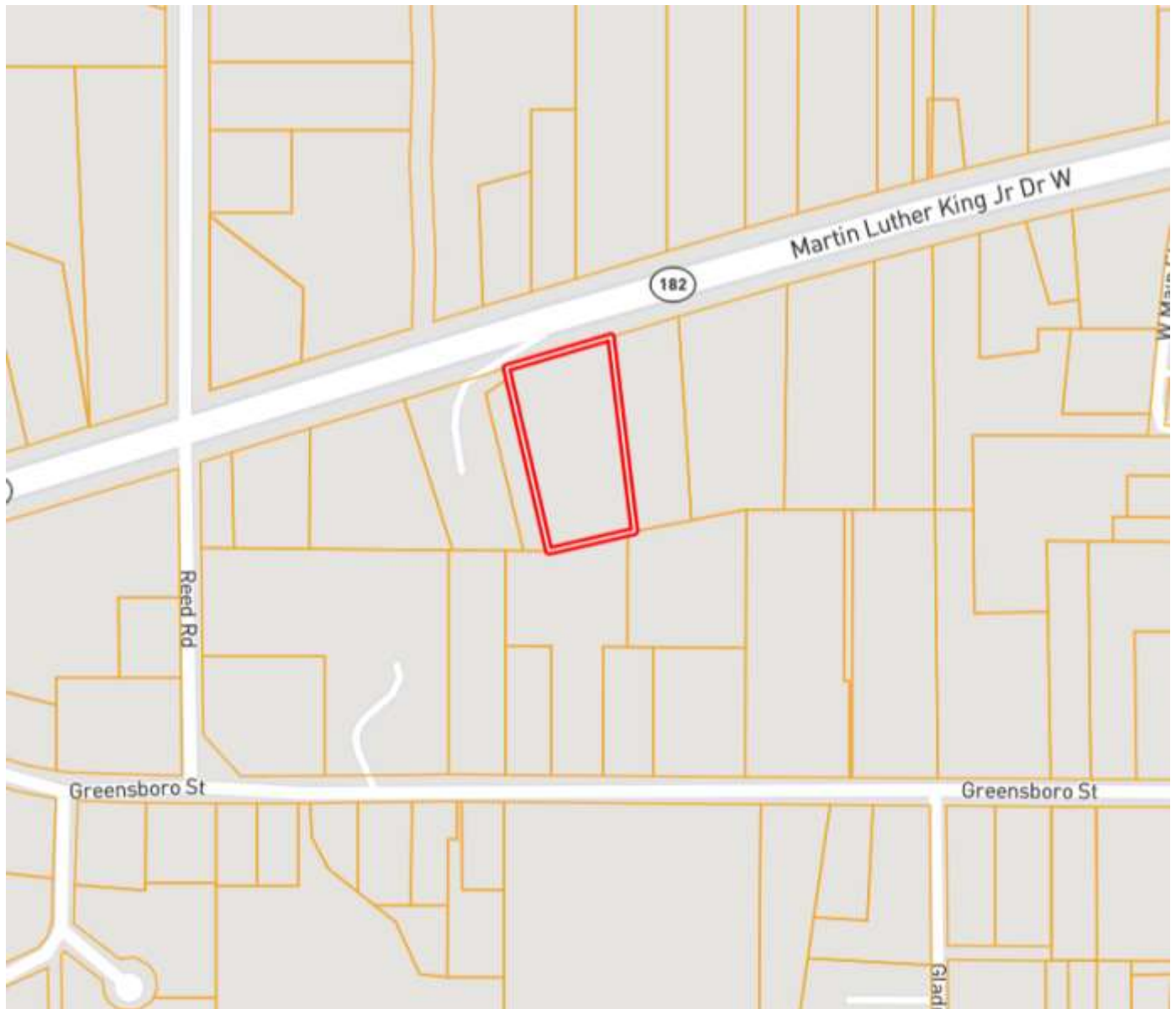
A Real Estate Expert You Can Trust

TomSmithLandandHomes.com

Information is believed to be accurate but not guaranteed.



OWNERSHIP MAP



ANTHONY STEEN

REALTOR®

Office: 662.441.2500

Cell: 662.645.5151

Anthony@TomSmithLand.com



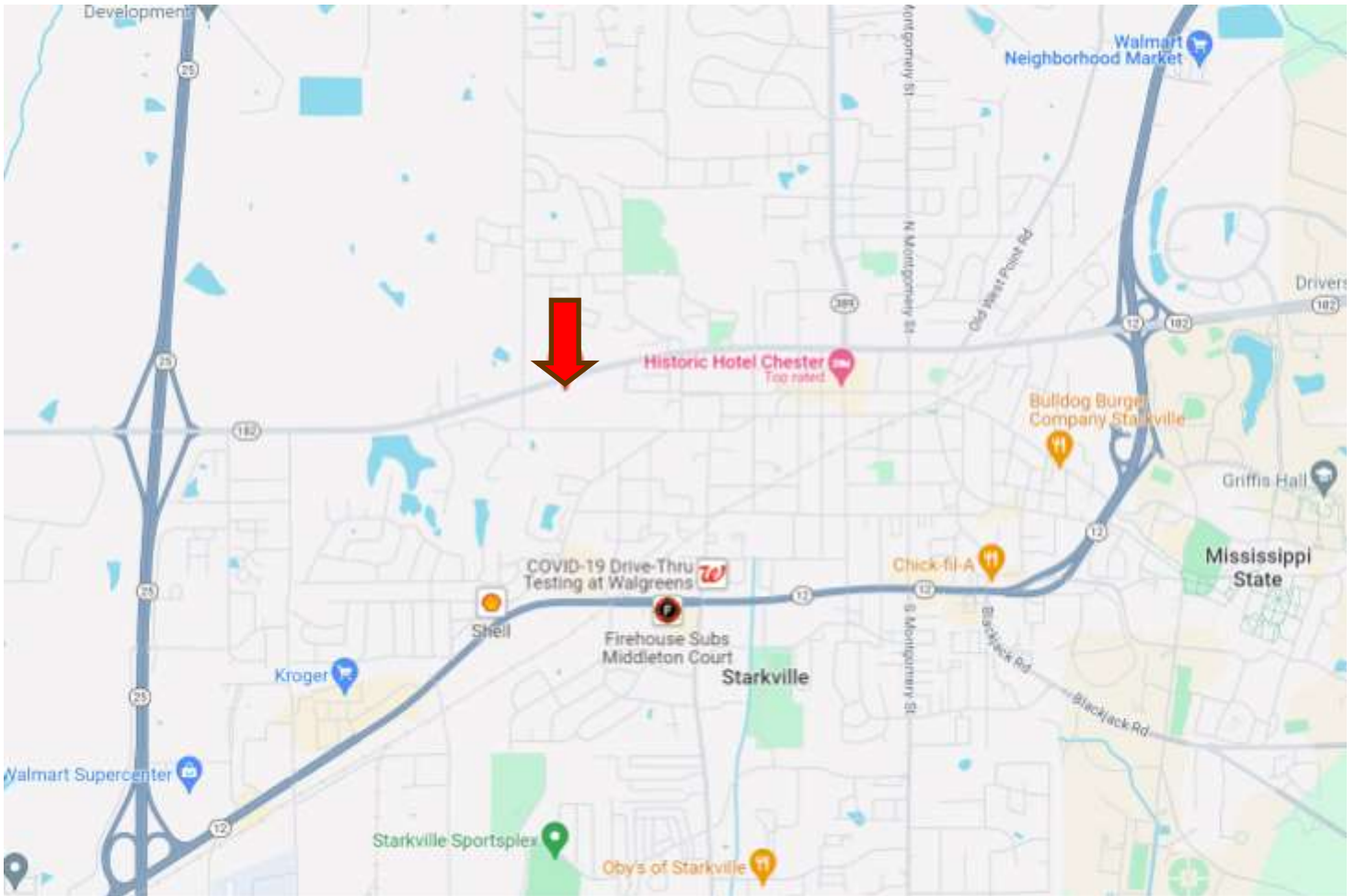
A Real Estate Expert You Can Trust

TomSmithLandandHomes.com

Information is believed to be accurate but not guaranteed.



DIRECTIONAL MAP



Address: 519 Dr. Martin Luther King Jr. Dr. Starkville, MS 39759

Directions from the Campus of Mississippi State University in Starkville, MS: Travel southwest on B S Hood Dr/Moore Road for 0.1 mile. Turn right onto Russell/Stone Blvd and then turn right onto Hwy 12. Travel .7 miles, then take the exit onto Hwy 182 W/ Dr. Martin Luther King Jr. Dr. After 2.1 miles, the house will be on the left. [Click for Google Maps](#)



**ANTHONY
STEEN**
REALTOR®
Office: 662.441.2500
Cell: 662.645.5151
Anthony@TomSmithLand.com



A Real Estate Expert You Can Trust

TomSmithLandandHomes.com

Information is believed to be accurate but not guaranteed.

