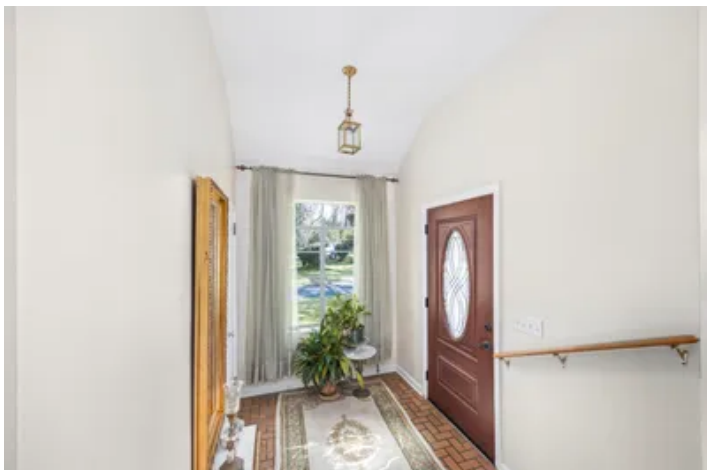


1983 E US 90
1983 E US 90
Madison, FL 32340

\$399,000
3± Acres
Madison County



1983 E US 90
Madison, FL / Madison County

SUMMARY

Address

1983 E US 90 null

City, State Zip

Madison, FL 32340

County

Madison County

Type

Residential Property

Latitude / Longitude

30.469972 / -83.383483

Taxes (Annually)

\$3,514

Dwelling Square Feet

1,959

Bedrooms / Bathrooms

3 / 3

Acreage

3

Price

\$399,000



1983 E US 90
Madison, FL / Madison County

PROPERTY DESCRIPTION

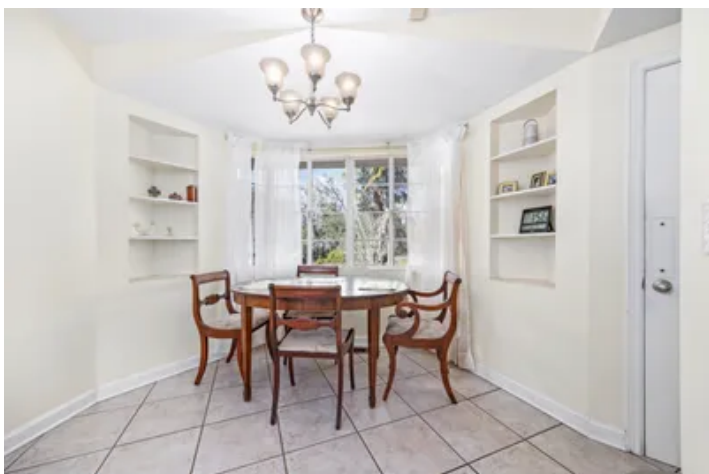
Brick Home on 3 Acres - Minutes from Downtown Madison, FL!

Address: 1983 E US 90, Madison, FL
Just minutes from downtown Madison!

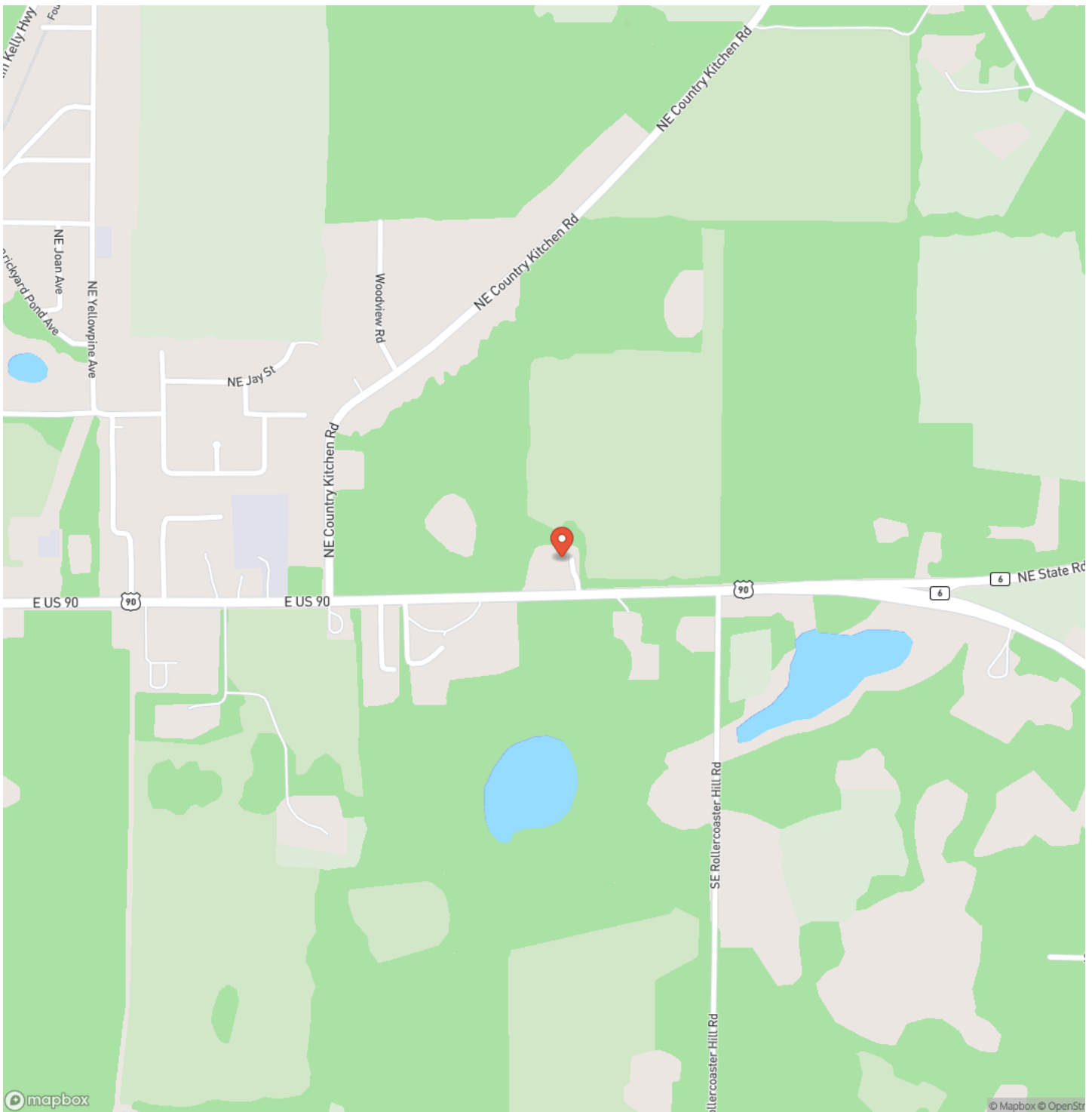
Property Highlights:

- Charming brick home
- 3 spacious bedrooms
- 3 full bathrooms
- Finished basement with separate entrance - perfect for income potential or a mother-in-law suite
- Outdoor kitchen & entertainment area - ideal for gatherings and cookouts
- 3 beautiful acres of open land
- Enjoy watching wildlife while relaxing in your private outdoor space
- Convenient access to US 90
- Close to shopping, schools, and amenities
- Great for comfortable living, gardening, or investment opportunities

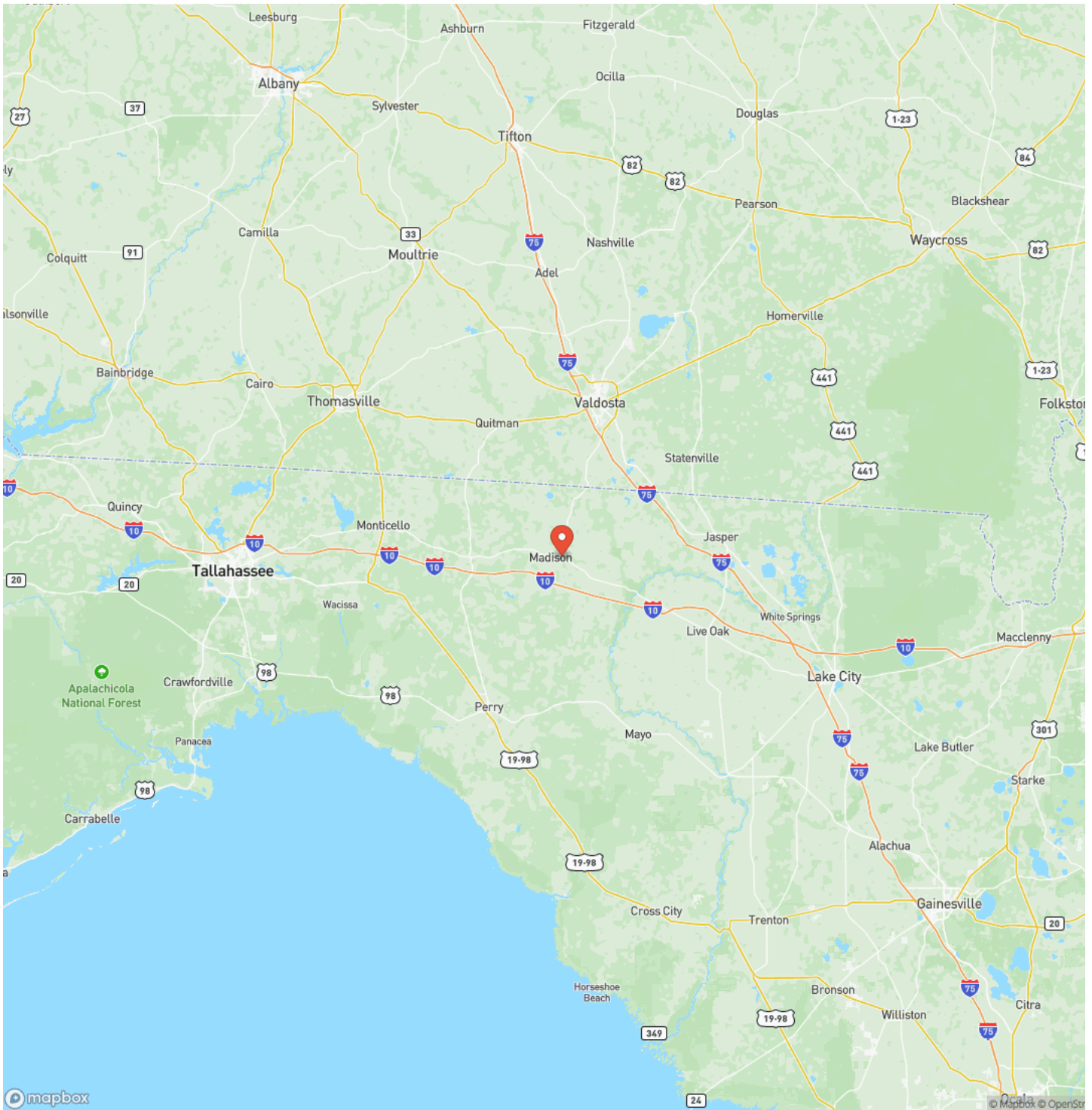
Don't miss this rare opportunity-contact us today for more details or to schedule a private tour!



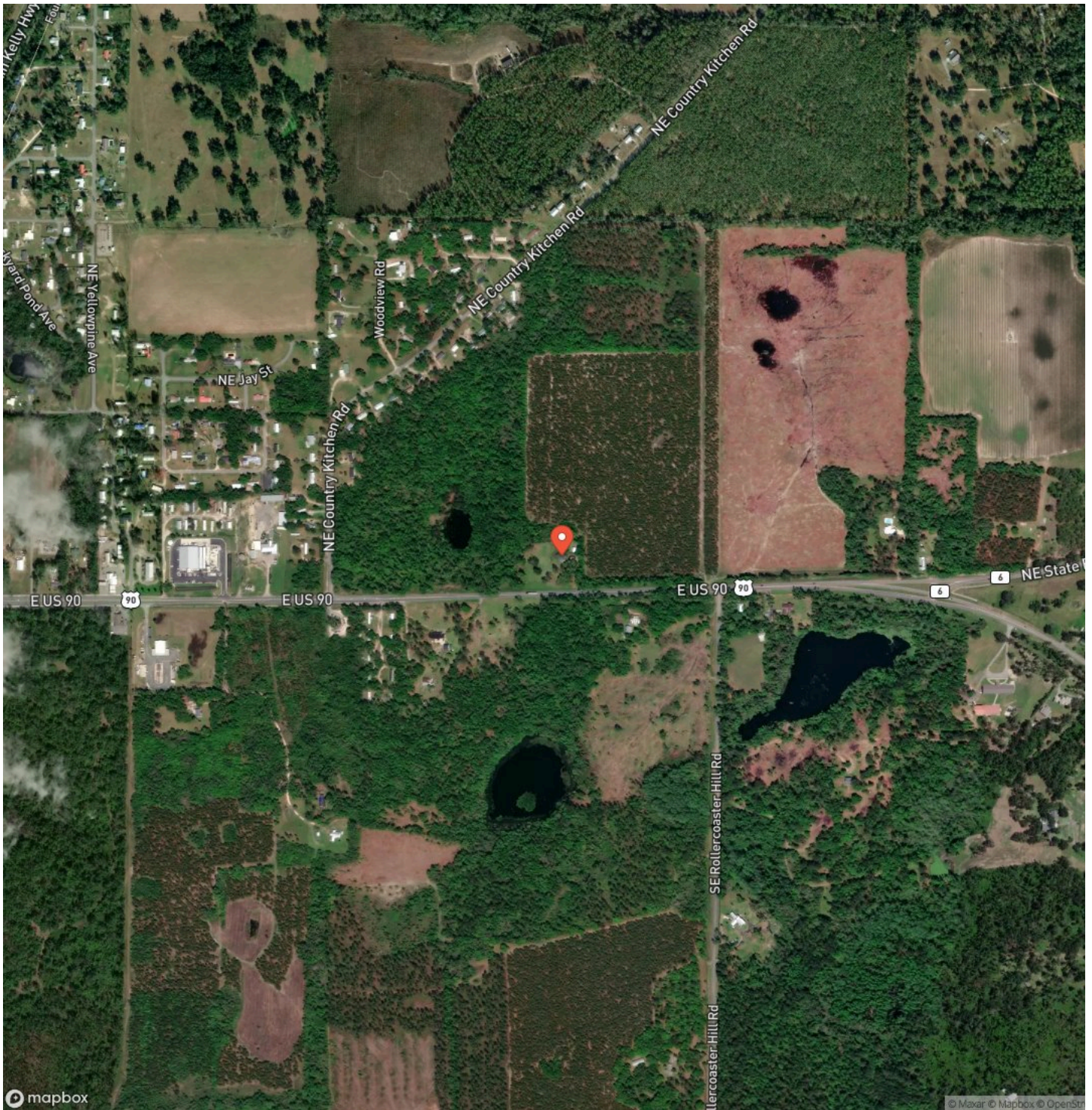
Locator Map



Locator Map



Satellite Map



DISCLAIMERS

Information in this brochure is provided solely for information purposes and does not constitute an offer to sell or advertise real estate outside the states in which broker or agent licensed. The information presented has been obtained from sources deemed to be reliable, but is not guaranteed or warranted by the agent, broker, or the sellers of these properties. This offering is subject to errors, omissions, prior sale, price change, correction or withdrawal from the market without notice. All references to age, square footage, income, expenses, acreage, carrying capacity, and land classification, etc. are approximate. Prospective buyers are chargeable with and expected to conduct their own independent investigation of the information and the property and to rely only on those results. Sellers reserve the right to accept or reject any and all offers without liability to any buyer or cooperating broker.

Maps are provided for illustration purposes only, the accuracy is not warranted. Parcels on interactive maps are not adjusted to match aerial backgrounds. This information is for reference purposes only and is not a legal document. Data maps contain errors. The seller and seller's agent are making known to all potential buyers that there may be variations between the location of the existing fence lines and the legal description of the deeded property. Seller and seller's agent make no warranties with regard to the location of the fence lines in relationship to the deeded property lines, nor does the Seller make any warranties or representations with regard to the specific acreage contained within the fenced property lines. Seller is selling the property in an "as is" condition, which includes the location of the fences as they exist. Boundaries shown on the accompanying maps are approximate, based on county parcel data. The maps are not to scale. The accuracy of the maps is not guaranteed. Prospective buyers are encouraged to verify fence lines, deeded property lines and acreages using a licensed surveyor at their own expense.

Benjamin Jones
190 SW RANGE AVE
Madison, FL 32340
(850) 673-7888
<https://mossyoakproperties.com/>
