



MASTERPIECE GROVE - SOUTH 14.6 ACRES

3401 Masterpiece Road, Lake Wales, FL 33898

Richard Dempsey, ALC, CIPS

863-581-1903

richard@saundersrealestate.com





PROPERTY OVERVIEW

Sale Price

\$280,000

OFFERING SUMMARY

Acreage: **14.6 Acres**

Price / Acre: **\$19,178**

State: Florida

City: Lake Wales

County: Polk

Property Type: Citrus, Land Investment,
Residential Development

Video: [View Here](#)

PROPERTY OVERVIEW

Zoned RS - Residential Suburban, this parcel presents an exceptional opportunity for residential development. The strategic location offers convenient access to local amenities and attractions, making it an attractive prospect for prospective investors. Embrace the possibilities of creating a residential community within this growing area.

SPECIFICATIONS & FEATURES

[VIEW PROPERTY WEBSITE](#)

SPECIFICATIONS & FEATURES

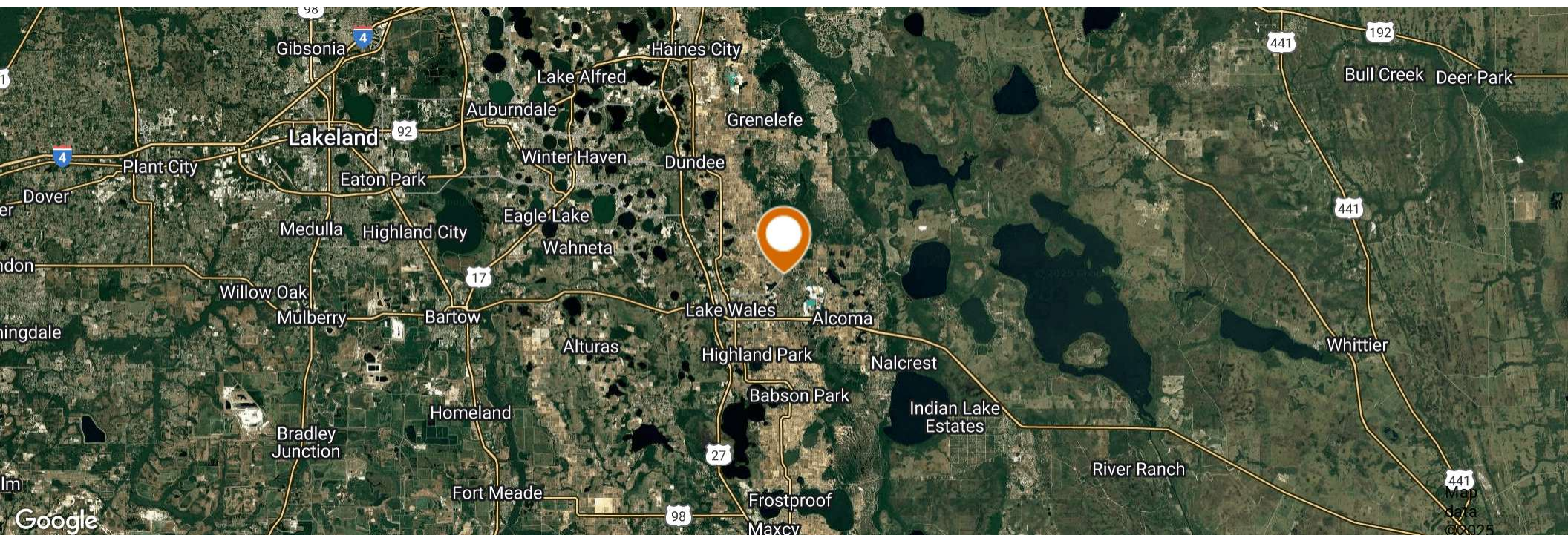
Land Types:	• Citrus
	• Land Investment
	• Residential Development
Uplands / Wetlands:	27± acres Uplands / 1± acre Wetlands
Soil Types:	Taveres Fine Sand
Taxes & Tax Year:	28-29-29-937600-020030 2024 \$332.95
	28-29-29-937600-020051 2024 \$51.94
	28-29-29-937600-020120 2024 \$57.38
	Total \$442.27
Zoning / FLU:	RS
Water Source & Utilities:	2 - 6" wells
Road Frontage:	780 ft
Nearest Point of Interest:	View of Bok Tower to the West
Current Use:	Currently citrus
Land Cover:	Citrus grove

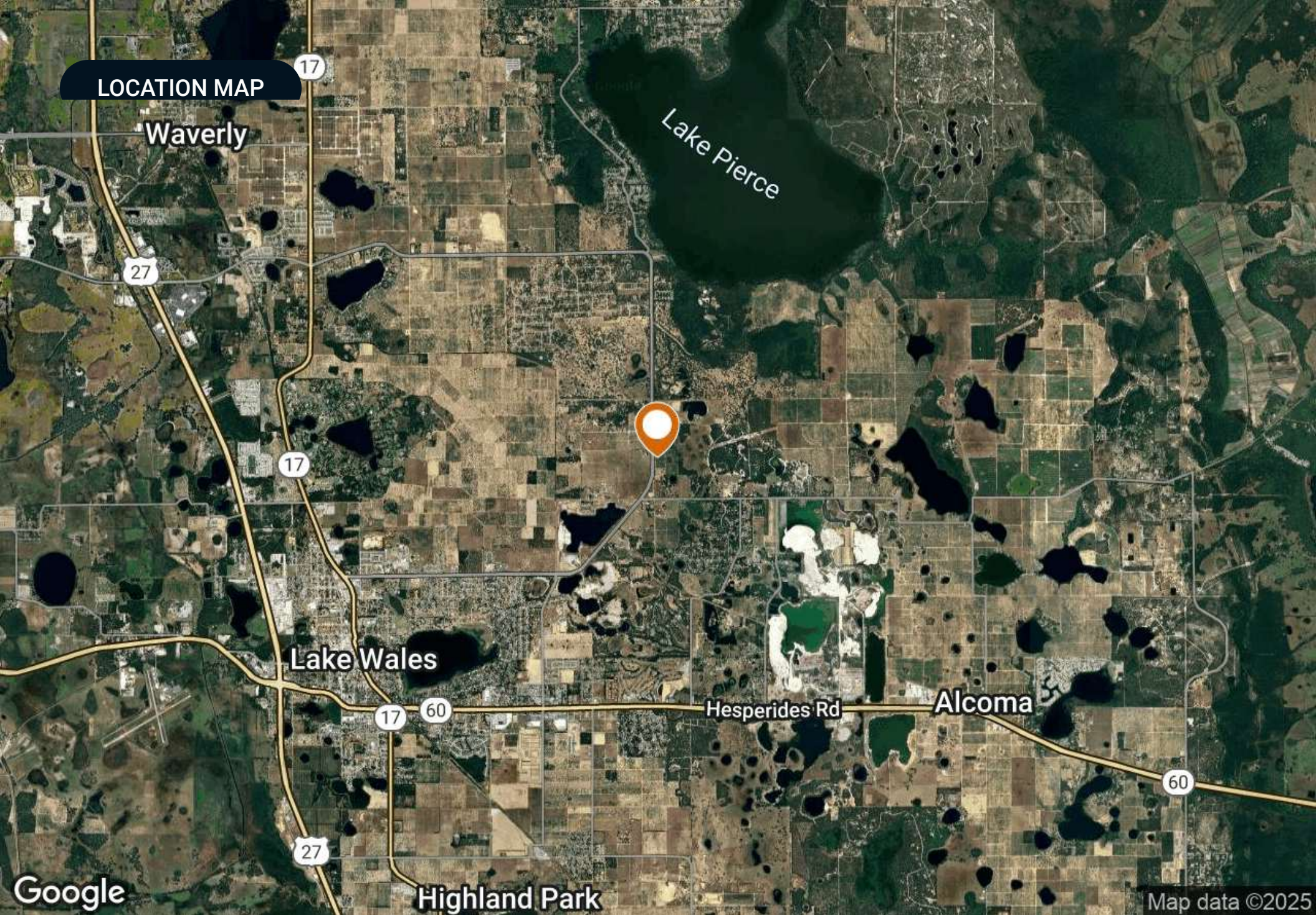
LOCATION



LOCATION & DRIVING DIRECTIONS

Parcel:	28-29-29-937600-020030; 28-29-29-937600-020120
GPS:	27.9309979, -81.5365213
Driving Directions:	From Lake Wales go east on Burns Avenue property is 1/2 mile north of Mammoth Grove Road
Showing Instructions:	Contact Richard





LOCATION MAP

Waverly

Lake Pierce

Lake Wales

Hesperides Rd

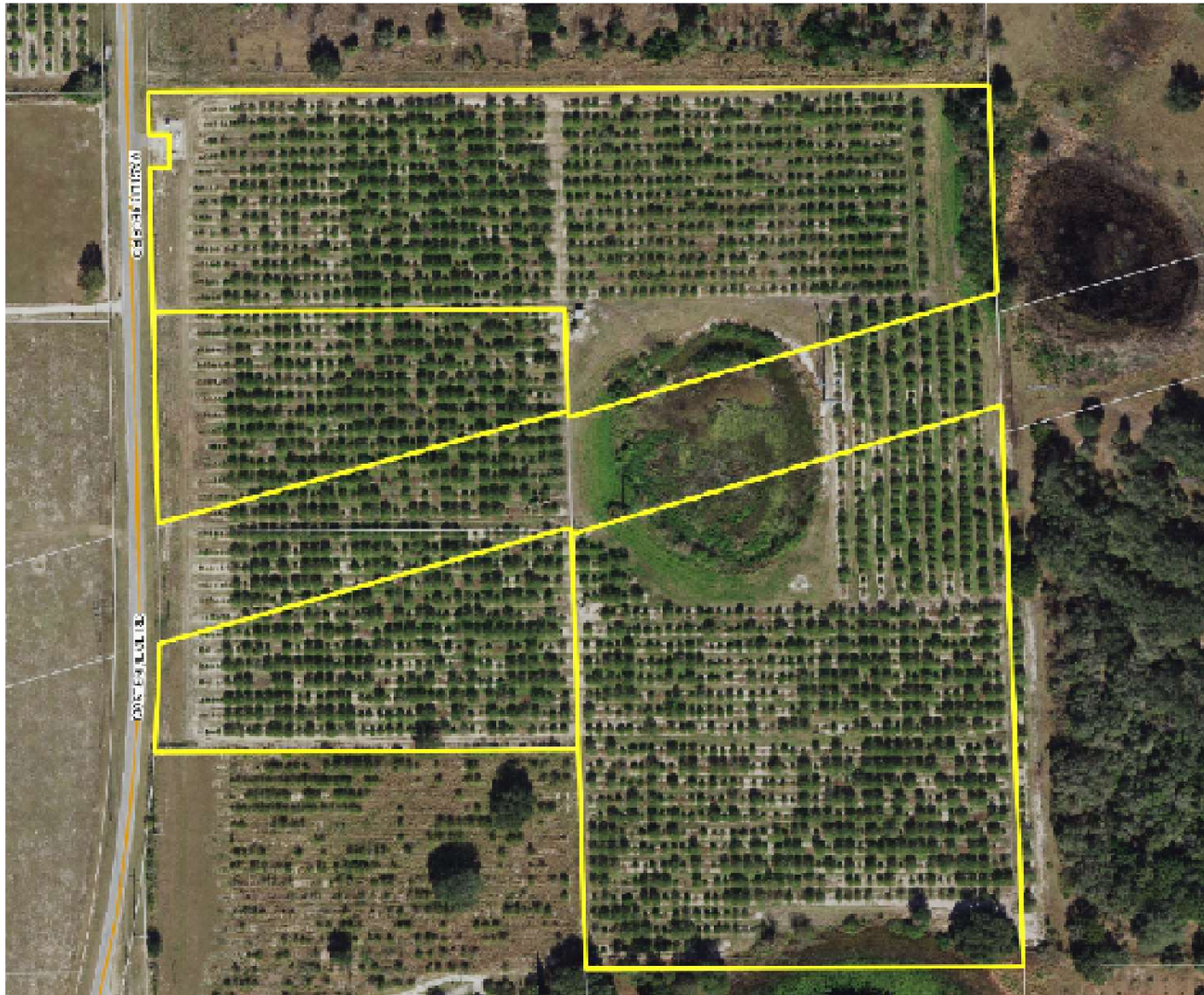
Alcoma

Highland Park

Google

Map data ©2025

BOUNDARY MAP



ADDITIONAL PHOTOS





LAKE WALES POLK COUNTY

Founded 1917

Population 16,774 (2023)

Area 14

Website lakewalesfl.gov

Major Employers NuCor Steel
AdventHealth
Florida's Natural Growers
Peterson Industries

The city of Lake Wales, Florida was officially incorporated in April 1917. The city developed quickly when in 1925, the Atlantic Coast Line Railroad constructed a new railway connecting Haines City to Everglades City. With the development of this line, a new depot was opened in Lake Wales.

Located west of Lake Kissimmee and east of Tampa, the city of Lake Wales is part of the Lakeland–Winter Haven Metropolitan Statistical Area of Central Florida. The city is geographically located near the center of Florida's peninsula, right on the Lake Wales Ridge upland area. Currently, 9 million people live within 100 miles of the city.

The city of Lake Wales serves as an excellent location for commercial real estate. Featuring tenants like Kegel, Merlin Entertainment, TruGreen, and AT&T, the Lake Wales Commerce and Technology Park is on the busy U.S. Route 27 just south of the city. Bok Tower Gardens is a nearby national historic landmark featuring a 205 foot carillon tower atop one of Florida's highest points.



ONE OF AMERICA'S BEST BROKERAGES



One of America's
Best Brokerages



APEX 2022 Top
National Producer



Most Influential
Business Leaders



Largest Commercial
Real Estate Brokers
in Tampa Bay



Ranked 210 on Inc.
5000 Regional List



SAUNDERS
REAL ESTATE



SAUNDERS
LAND



SAUNDERS
COMMERCIAL

Serving the Southeast

At Saunders Real Estate, we deliver full-service real estate solutions across the Southeast, built on more than 30 years of trusted experience. Our dedicated teams—experts in both land and commercial real estate—offer tailored guidance backed by deep regional insight and a proven track record. We believe that successful outcomes start with strong relationships built on trust and a shared commitment to your goals.



877-518-5263 • info@saundersrealestate.com