

# Spacious Home with Guest House on 10.6± acres in Washington County, MS



**1710 Highway 82 W, Greenville, MS 38701**

**\$325,000**

Located on a 10.6-acre lot in Washington County, this expansive property features a five-bedroom, three-bath home, making it perfect for family living. Inside, you'll find a stunning hand-painted wall that ascends the staircase. This home features three inviting fireplaces and a dedicated office space. The primary bathroom offers a luxurious jetted tub, creating a perfect retreat for relaxation. A separate guest house provides three additional bedrooms and one bathroom, ideal for visitors or extended family. The huge backyard offers endless possibilities for whatever you need, featuring a large pool, although currently not operational. The front yard is equally impressive, featuring a Cypress brake and a well. This property combines spacious living with outdoor enjoyment, making it a true gem in Greenville. Built in 1960, this home blends character with the potential for an attractive price.



**ANTHONY  
STEEN**  
REALTOR®

Office: 601.898.2772

Cell: 662.645.5151

Anthony@TomSmithLand.com



**A Real Estate Expert You Can Trust**

TomSmithLandandHomes.com

Information is believed to be accurate but not guaranteed.





**A Real Estate Expert**  
*You Can Trust!*

**ANTHONY STEEN**  
REALTOR®  
O: 601.898.2772 C: 662.645.5151  
Anthony@TomSmithLand.com  
TomSmithLandandHomes.com

**Tom Smith**  
**LAND AND HOMES**  
Expect More. Get More.

LandReport  
2011-2024  
**BEST**  
BROKERAGES

Information is believed to be accurate but not guaranteed.



**A Real Estate Expert**  
*You Can Trust!*

**ANTHONY STEEN**  
REALTOR®  
O: 601.898.2772 C: 662.645.5151  
Anthony@TomSmithLand.com  
TomSmithLandandHomes.com

**Tom Smith**  
LAND AND  
HOMES  
Expect More. Get More.



Information is believed to be accurate but not guaranteed.



**A Real Estate Expert**  
*You Can Trust!*

**ANTHONY STEEN**

REALTOR®

O: 601.898.2772 C: 662.645.5151

Anthony@TomSmithLand.com

TomSmithLandandHomes.com



Expect More. Get More.



Information is believed to be accurate but not guaranteed.



## A Real Estate Expert *You Can Trust!*

**ANTHONY STEEN**

REALTOR®

O: 601.898.2772 C: 662.645.5151

Anthony@TomSmithLand.com

TomSmithLandandHomes.com

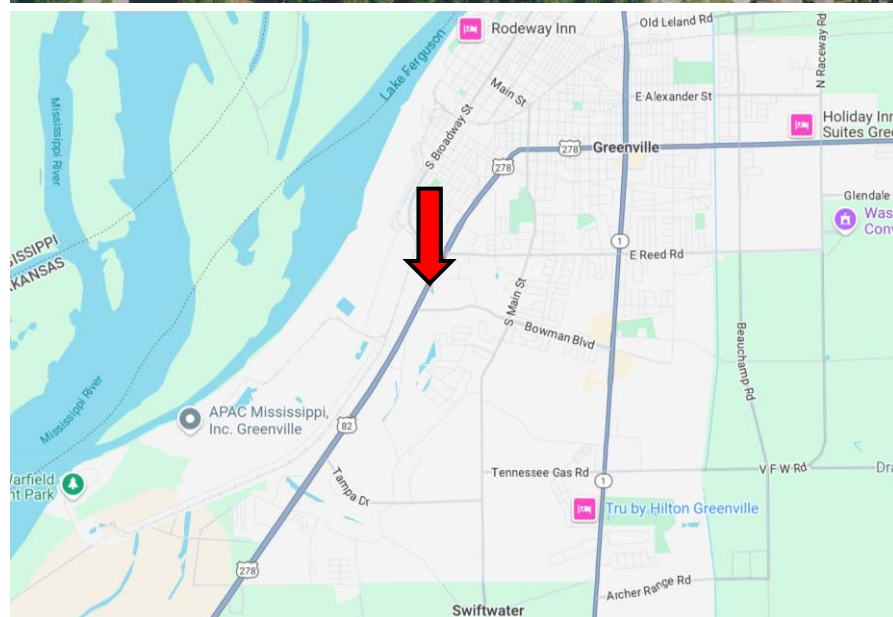
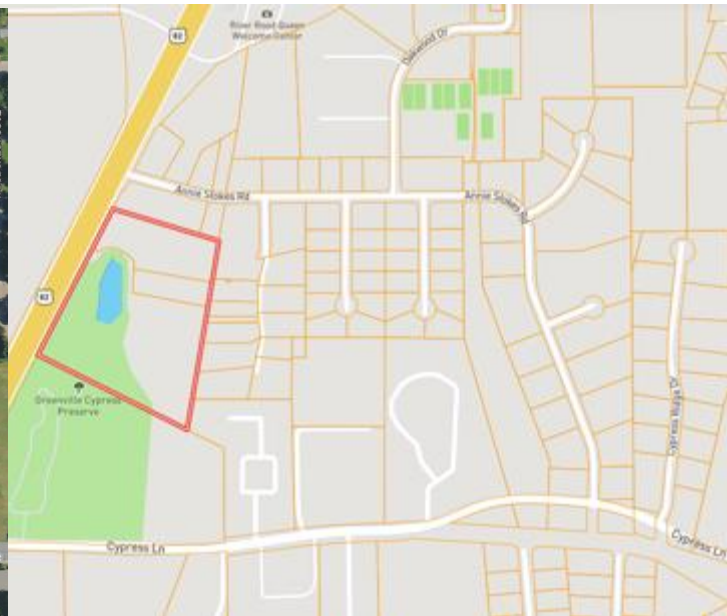


Expect More. Get More.



Information is believed to be accurate but not guaranteed.

# MAPS | [Click for the Interactive Map](#)



**Address: 1710 Highway 82 W, Greenville, MS 38701**

**Directions from the intersection of MS-1 & US-82 in Greenville, MS: Travel US-82 W for 2.4 miles. The house will be on the left.**

**[Google Map Link](#)**



**ANTHONY  
STEEN**  
REALTOR®

Office: 601.898.2772

Cell: 662.645.5151

[Anthony@TomSmithLand.com](mailto:Anthony@TomSmithLand.com)



Expect More. Get More.

**A Real Estate Expert You Can Trust**

[TomSmithLandandHomes.com](http://TomSmithLandandHomes.com)

Information is believed to be accurate but not guaranteed.

