



**T R O P H Y**  
 PROPERTIES AND AUCTION  
 LAND | RECREATIONAL | RESIDENTIAL

# 19.3 Surveyed Acres for Sale - Lincoln County Missouri

www.TrophyPA.com • (855) 573-5263 • leads@trophy.com



**PROPERTY ADDRESS:**

00 Hwy F  
 Elsberry, MO 63343

**PRICE:** \$279,850

**ACRES:** 19.3

**COUNTY:** Lincoln

**PROPERTY HIGHLIGHTS:**

- Located amongst the LEGENDARY Hills & Knobs
- IMPRESSIVE views of the Lincoln / Pike landscape
- Possible Build Sites with VIEWS
- Electric along Hwy F
- Blacktop frontage on Hwy F with your own new private entrance
- Plenty of Deer and Turkey on this property (See pics)
- Nice established trails to access timber
- 9± acres of open ground currently in row crop
- Potential areas for food plots or leave standing crops for deer
- New entrance into property
- Only 5 miles from Hwy61 - all blacktop
- Some Deed Restrictions, see in full listing description

**PROPERTY DESCRIPTION:**

Outstanding property located in the legendary hills of Northern Lincoln County! Offering impressive views of the distant knobs and ridge tops, this combo tract is packed full of great features. This property offers an excellent BUILD SITE with a demanding VIEW, electric at the highway, blacktop frontage on Hwy F, awesome deer & turkey hunting, 9+/- acres of open ground currently in row-crop and new trails for accessing the timber. This is a perfect tract to build your home and have plenty of room to HUNT a neighborhood known for producing giant bucks. Opportunity to own private land located in one of the most sought after regions north of St. Louis. Only 35 miles north of Wentzville. Some Deed restrictions: No single or doublewide mobile or modular homes, No junk yards, No animal feeding operations, No hog confinements, No commercial dog kennels, No ATV, side by side or dirt bike tracks open to public, No subdivision of this tract.



**PRESENTED BY:**

**JOE OGDEN**  
 Land Specialist

M: (636) 358-3567

P: (855) 573-5263 x707

E: jogden@trophy.com

**Trophy Properties and Auction**  
 640 Cepi Drive  
 Suite 100  
 Chesterfield, MO 63005

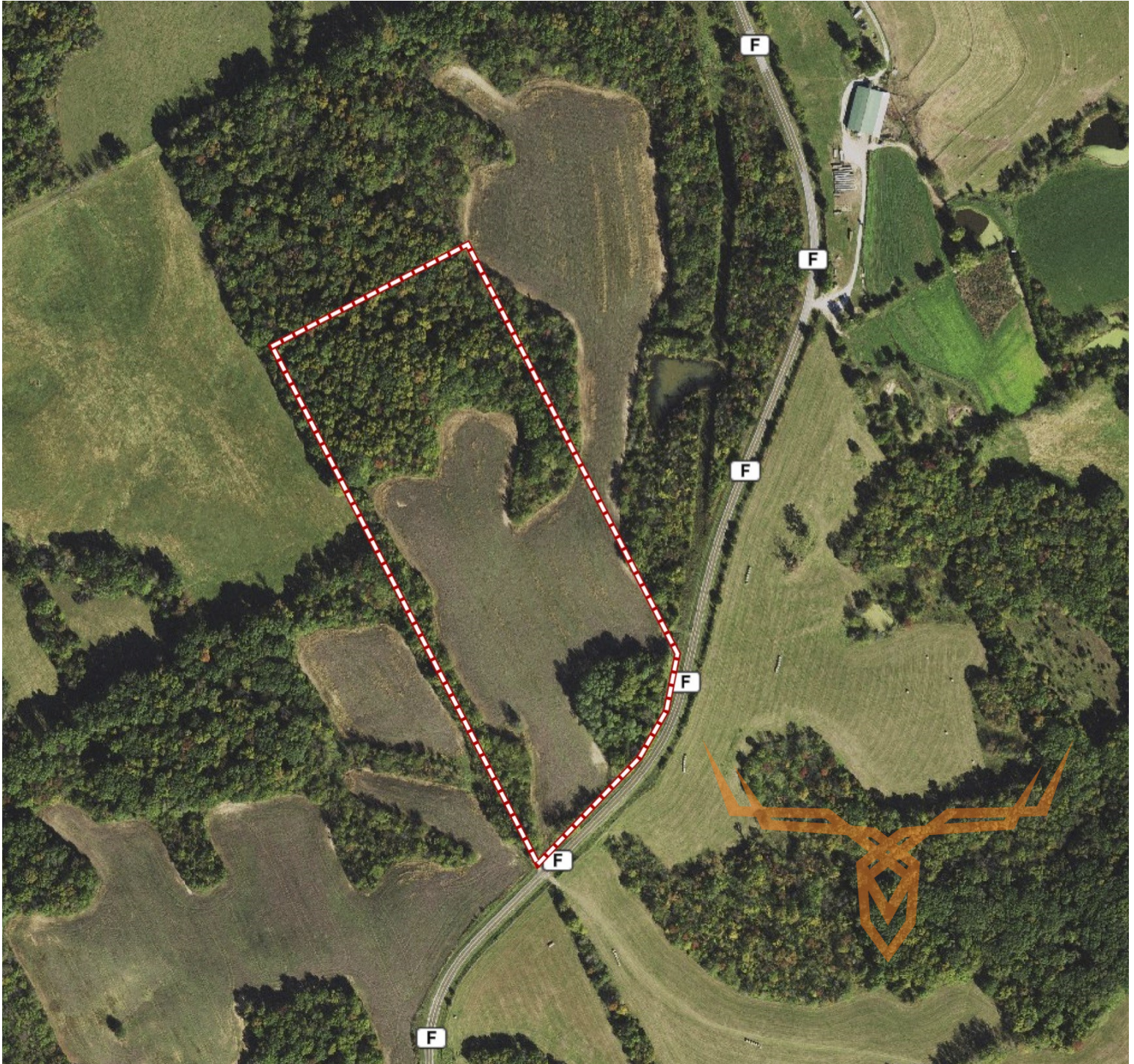
www.Trophy.com  
 leads@trophy.com



**TROPHY**  
PROPERTIES AND AUCTION  
LAND | RECREATIONAL | RESIDENTIAL

# 19.3 Surveyed Acres for Sale - Lincoln County Missouri

[www.TrophyPA.com](http://www.TrophyPA.com) • (855) 573-5263 • [leads@trohypa.com](mailto:leads@trohypa.com)



Broker does not guarantee the accuracy of sq. ft., lot size, or other information, buyer is advised to independently verify the accuracy of information through personal