



T R O P H Y
PROPERTIES AND AUCTION
LAND | RECREATIONAL | RESIDENTIAL

Endless Possibilities on 66± Acres of Prime Property For Sale—Barry County

www.TrophyPA.com • (855) 573-5263 • leads@trophyapa.com



PROPERTY ADDRESS:

00 Farm Road 1200
Crane, MO 65633

PRICE: \$675,000

ACRES: 66±

COUNTY: Barry

PROPERTY HIGHLIGHTS:

- 66+/- acres with diverse terrain
- Includes a scenic pond and a year round flowing creek
- Blacktop road frontage on one side
- Rich grassland ideal for cattle, horses, or hay production
- Open pasture and scattered trees
- Solar-powered electric fencing I
- No zoning or restrictions
- Potential for a ranch, homestead, or recreational retreat
- Just minutes south of Walmart
- Near Springfield, Branson & Aurora

PROPERTY DESCRIPTION:

This 66± acre tract of land presents an exceptional combination of natural beauty and practical utility. Located in Barry County, the property boasts a gently flowing creek, a serene pond, and convenient blacktop road frontage along one side. The landscape features softly rolling terrain characterized by lush grasslands and clusters of trees, making it an ideal setting for livestock grazing, constructing your dream home, or enjoying recreational activities. The land is equipped with solar-powered electric fencing, adding an extra layer of functionality. With no zoning restrictions, you have the potential to develop the property according to your vision, whether that means establishing a farm, creating a personal retreat, or building a permanent residence. With a peaceful, rural setting, this property is also conveniently located just minutes south of Walmart and offers easy access to the vibrant communities of Springfield, Branson, and Aurora. Opportunities to acquire land like this in the Ozarks are rare, so don't miss your chance to secure this stunning piece of paradise today!



PRESENTED BY:

RASHELL BURKE

Land & Home Specialist

M: (660) 723-0414

P: (855) 573-5263 x774

E: rburke@trophyapa.com

Trophy Properties and Auction

640 Cepi Drive, Suite 100

Chesterfield, MO 630056

www.Trophyapa.com

leads@trophyapa.com



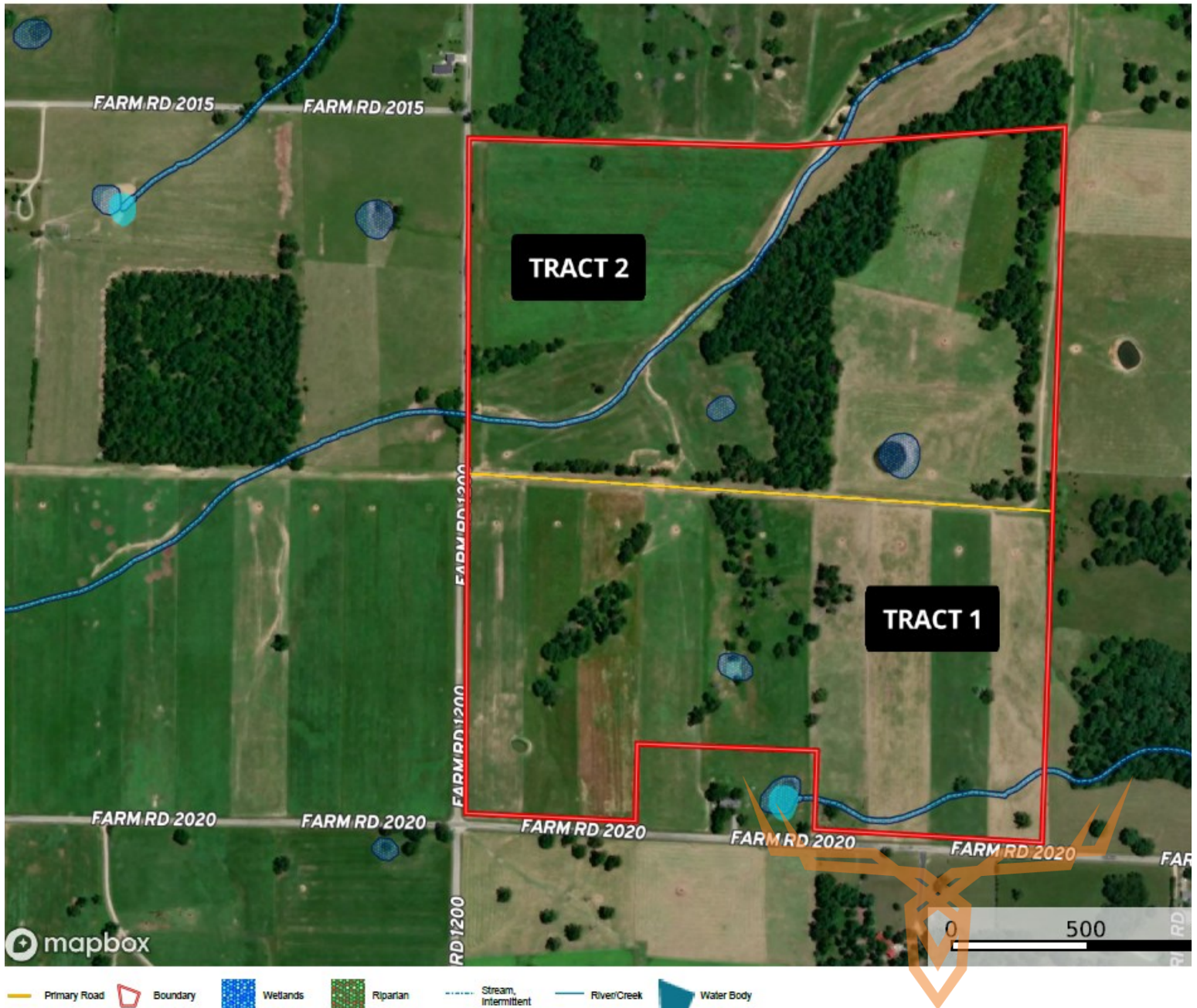
Endless Possibilities on 66± Acres of Prime Property For Sale—Barry County

T R O P H Y
PROPERTIES AND AUCTION
LAND | RECREATIONAL | RESIDENTIAL

www.TrophyPA.com • (855) 573-5263 • leads@trophy.com

2020 & 1200 Crane, MO, 65633

Missouri, AC +/-



RaShell Burke
P: 660-723-0414

www.TrophyPA.com

640 Cepi Drive, Suite 100, Chesterfield, MO 63005

Broker does not guarantee the accuracy of sq. ft., lot size, or other information, buyer is advised to independently verify the accuracy of information through personal inspection and with appropriate professionals