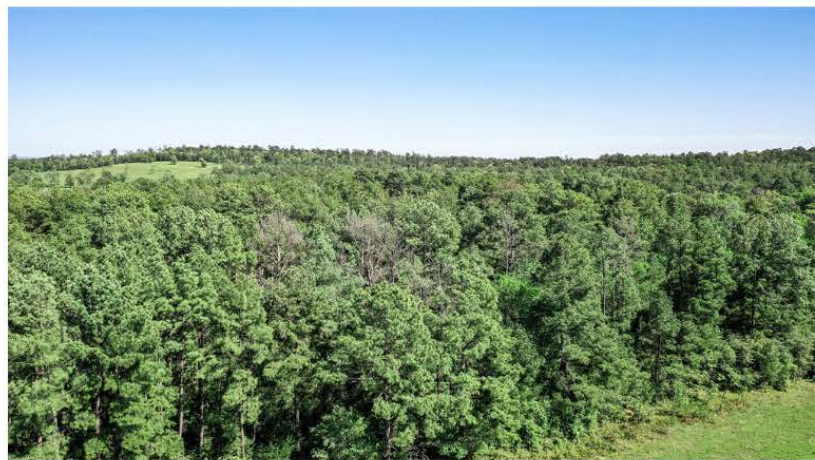




**FM 946 N - TRACT 4**  
OAKHURST, TEXAS  
30 +/- ACRES | SEASONAL CREEK

***Markham***  
***Realty***



# FM 946 N - TRACT 4



30 Acres of the most pristine land that San Jacinto County has to offer. Absolutely gorgeous, with approximately 600 ft of road footage. Nothing on the market competes with these aesthetics. The land is sandy loam soil, with a pretty seasonal creek, rolling terrain, with over 30 ft of elevation changes. The wooded portion makes up about 3/4 of the land, loaded with a mixture of pine and hardwood trees. The pastureland is lush and green, with multiple homesite potential. It's truly breathtaking, so definitely make plans to come and see it. Lush and green, rolling pastureland--this whole place will take your breath away.



Markham Realty  
Selling Quality Texas Properties Since 1970  
contact@markhamrealty.com  
936-295-5989 | markhamrealty.com



Scan here for additional information & photos.

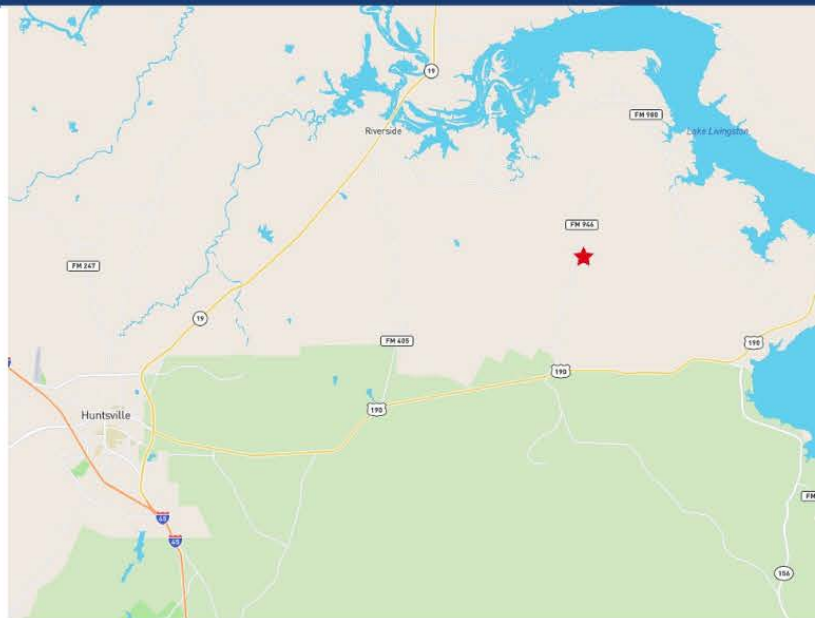
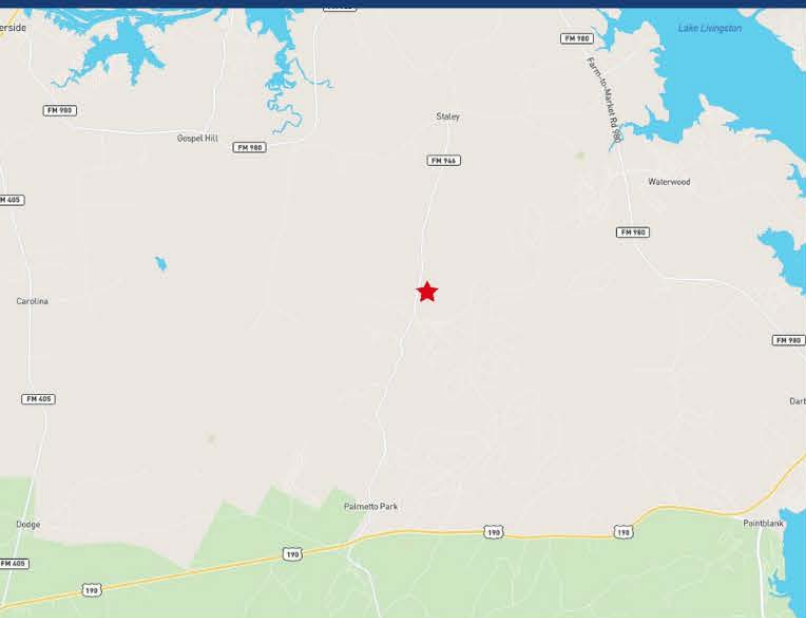


Information furnished is from sources deemed reliable, but is not guaranteed by Markham Realty, Inc. The offerings are subject to change in price, errors, omissions, prior sales, or withdrawal without notice. Square footage, acreage size and lot dimensions are approximate. All persons and firms named in this brochure are licensed brokers or salespersons. Markham Realty, Inc. will co-broker with any licensed Broker if Broker and/or agent accompanies his or her prospective buyer from the first (1st) showing forward.

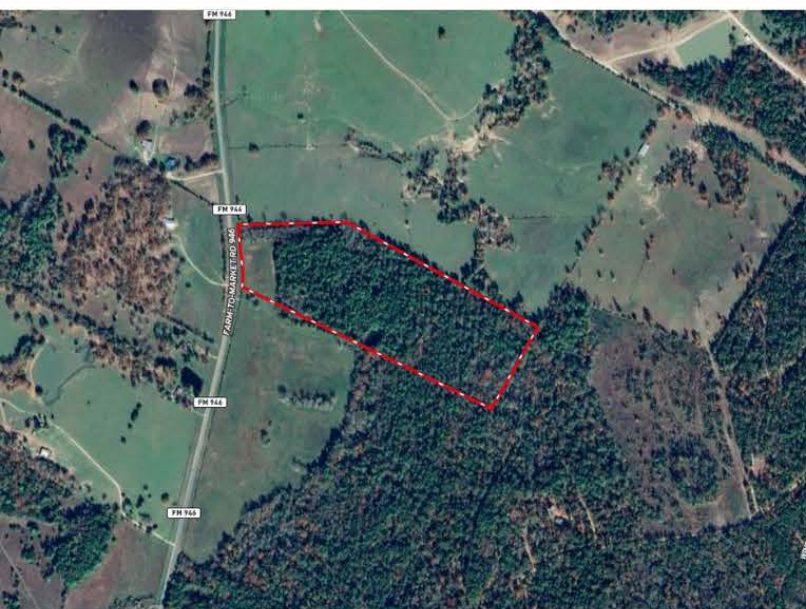
# FM 946 N - TRACT 4

OAKHURST, TEXAS

**Markham**  
**Realty**



From Oakhurst, take FM 946 North 4.4 miles to property on right. There will be a sign at the road.



**Markham**  
**Realty**

Markham Realty  
Selling Quality Texas Properties Since 1970  
contact@markhamrealty.com  
936-295-5989 | markhamrealty.com



Scan here for additional information & photos.



Information furnished is from sources deemed reliable, but is not guaranteed by Markham Realty, Inc. The offerings are subject to change in price, errors, omissions, prior sales, or withdrawal without notice. Square footage, acreage size and lot dimensions are approximate. All persons and firms named in this brochure are licensed brokers or salespersons. Markham Realty, Inc. will co-broker with any licensed Broker if Broker and/or agent accompanies his or her prospective buyer from the first (1st) showing forward.