



**42.75± ACRES**  
**AMITE COUNTY, MS**  
**\$247,950**



**SMALLTOWN**  
HUNTING PROPERTIES  
& REAL ESTATE<sup>SM</sup>

OFFICE (769) 888-2522 | [WWW.SMALLTOWNPROPERTIES.COM](http://WWW.SMALLTOWNPROPERTIES.COM)

# THE AMITE 42.75

## PROPERTY PROFILE

### LOCATION:

- 5734 Hebron Road  
Liberty, MS 39645
- Amite County
- 10± Miles NE of Liberty
- 17± Miles W of McComb
- 31± Miles SW of Brookhaven
- 69.1± Miles NE of Baton Rouge, LA
- 71± Miles NW of Hammond, LA
- 124± Miles NW of New Orleans, LA

### COORDINATES:

- 31.25766, -90.69941

### TAX INFORMATION:

- TBD

### PROPERTY USE:

- Hunting
- Recreational
- Potential Home/Cabin Site

### PROPERTY INFORMATION:

- 42.75± Surveyed Acres
- 1,179'± Road Frontage
- Mixed Timber
- Gravel Driveway
- Gordon Creek Frontage
- Internal Trail System
- Perimeter Trail System
- 2 Wildlife Food Plots
- Abundant Wildlife
- Utilities Available
- Additional Acreage Available



**LEE WHITE** | LAND SPECIALIST  
C: 601-600-1395 | lee@smalltownproperties.com

**ALINDA CRUISE WHITE** | LAND & RESIDENTIAL SPECIALIST  
C: 601-660-4356 | alinda@smalltownproperties.com

Information is believed to be accurate but not guaranteed.

4848 Main St. - Flora, MS 39071 | O: 769-888-2522 | smalltownproperties.com

# WELCOME TO THE AMITE 42.75

**WELCOME TO THE AMITE 42.75, LOCATED JUST OUTSIDE OF LIBERTY, MISSISSIPPI!** Discover the perfect blend of hunting, recreation, and residential potential with a cleared homesite on this recently surveyed 42.75± acre property. With a gravel driveway already established, this tract features 1,179± feet of blacktop road frontage on Hebron Road. This versatile Amite County tract offers an outstanding opportunity for outdoor enthusiasts or anyone seeking a peaceful rural homesite in Southwest Mississippi.

Conveniently located just 10± miles NE from Liberty and only 15.8± miles from Interstate 55 in McComb, the Amite 42.75 provides easy access via MS-569 North while still maintaining the quiet seclusion that country living offers.

This tract is well-prepared for immediate enjoyment and future development. An interior trail system and a perimeter trail system, along with two established food plots, are already in place, making the property ideal for hunting, ATV riding, hiking, or simply enjoying the outdoors. The gentle rolling terrain adds to the usability and appeal of the land, whether you envision a private hunting camp, weekend retreat, or forever home.



**LEE WHITE** | LAND SPECIALIST  
C: 601-600-1395 | [lee@smalltownproperties.com](mailto:lee@smalltownproperties.com)

**ALINDA CRUISE WHITE** | LAND & RESIDENTIAL SPECIALIST  
C: 601-660-4356 | [alinda@smalltownproperties.com](mailto:alinda@smalltownproperties.com)

Information is believed to be accurate but not guaranteed.

4848 Main St. - Flora, MS 39071 | O: 769-888-2522 | [smalltownproperties.com](http://smalltownproperties.com)

# MORE ABOUT THE AMITE 42.75

The timber composition consists of a healthy mix of mature hardwoods and established planted pines. In December 2024, the property was replanted with containerized loblolly pine seedlings, positioning the tract for strong future timber growth and long-term income potential.

Wildlife is abundant throughout the area, and the established habitat combined with the food plots creates excellent hunting opportunities for deer and other game native to Amite County. Gordon Creek traverses portions of the southwestern property line, adding scenic beauty and a natural water source for wildlife. A small portion of the property lies within Floodplain A, while the majority of the tract remains highly usable and accessible.

Utilities are available through Magnolia EPA and North Central Amite Water Association, offering added convenience for future construction. With blacktop road frontage and existing infrastructure already in place, the Amite 42.75 is ready for your vision.

Whether you are searching for a recreational getaway, hunting property, or a quiet country homesite, this Amite County tract delivers in one remarkable package.

**Call Lee or Alinda White today to schedule a private showing  
and make 5734 Hebron Road your new address.**



**LEE WHITE** | LAND SPECIALIST  
C: 601-600-1395 | [lee@smalltownproperties.com](mailto:lee@smalltownproperties.com)

**ALINDA CRUISE WHITE** | LAND & RESIDENTIAL SPECIALIST  
C: 601-660-4356 | [alinda@smalltownproperties.com](mailto:alinda@smalltownproperties.com)

Information is believed to be accurate but not guaranteed.



**LEE WHITE** | LAND SPECIALIST  
C: 601-600-1395 | [lee@smalltownproperties.com](mailto:lee@smalltownproperties.com)

**ALINDA CRUISE WHITE** | LAND & RESIDENTIAL SPECIALIST  
C: 601-660-4356 | [alinda@smalltownproperties.com](mailto:alinda@smalltownproperties.com)

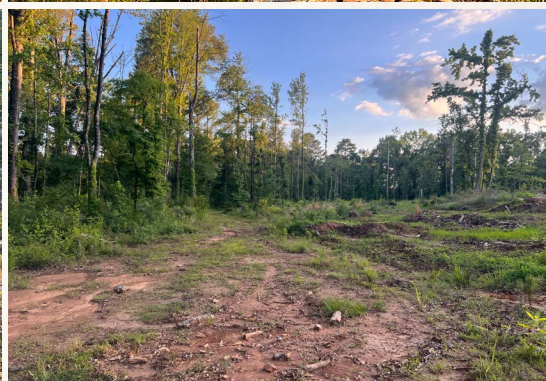
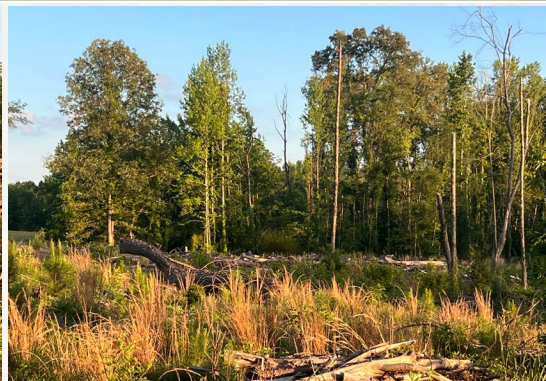
*Information is believed to be accurate but not guaranteed.*



LEE WHITE | LAND SPECIALIST  
C: 601-600-1395 | lee@smalltownproperties.com

ALINDA CRUISE WHITE | LAND & RESIDENTIAL SPECIALIST  
C: 601-660-4356 | alinda@smalltownproperties.com

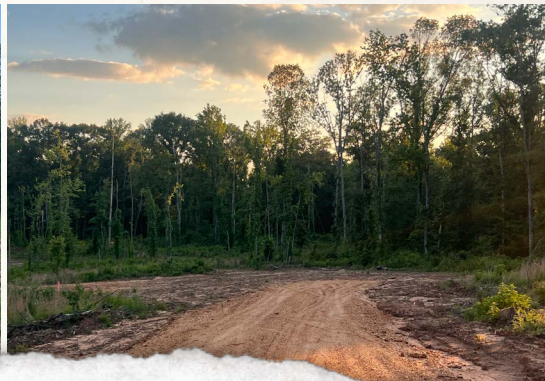
*Information is believed to be accurate but not guaranteed.*



**LEE WHITE** | LAND SPECIALIST  
C: 601-600-1395 | [lee@smalltownproperties.com](mailto:lee@smalltownproperties.com)

**ALINDA CRUISE WHITE** | LAND & RESIDENTIAL SPECIALIST  
C: 601-660-4356 | [alinda@smalltownproperties.com](mailto:alinda@smalltownproperties.com)

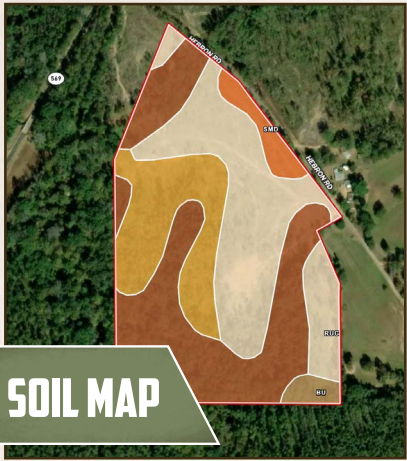
*Information is believed to be accurate but not guaranteed.*



LEE WHITE | LAND SPECIALIST  
C: 601-600-1395 | lee@smalltownproperties.com

ALINDA CRUISE WHITE | LAND & RESIDENTIAL SPECIALIST  
C: 601-660-4356 | alinda@smalltownproperties.com

*Information is believed to be accurate but not guaranteed.*

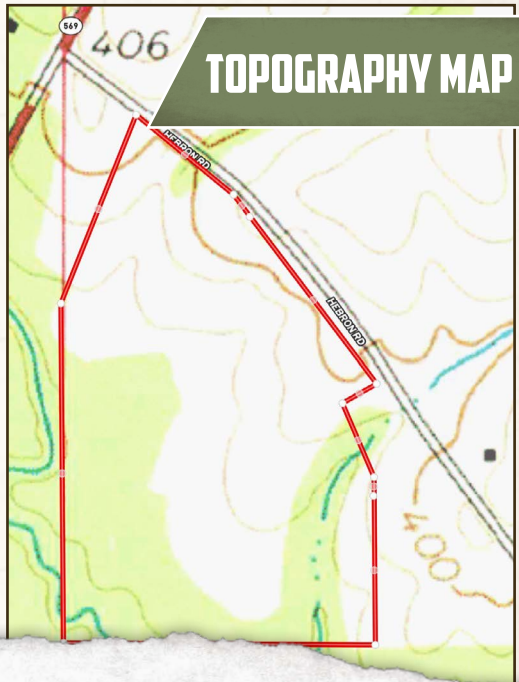


**SOIL MAP**

<b>Gb</b>	Gillsburg silt loam, 0 to 2 percent slopes, occasionally flooded	14.79	39.74%	-	40	2w
<b>RuC</b>	Ruston sandy loam, 5 to 8 percent slopes	13.05	35.06%	-	75	3e
<b>Ar</b>	Ariel silt loam, 0 to 2 percent slopes, occasionally flooded	7.17	19.26%	-	53	2w
<b>SmD</b>	Smithdale sandy loam, 8 to 12 percent slopes	1.43	3.84%	-	53	4e
<b>Bu</b>	Bude silt loam	0.79	2.12%	-	56	2w



**FLOOD MAP**



**TOPOGRAPHY MAP**

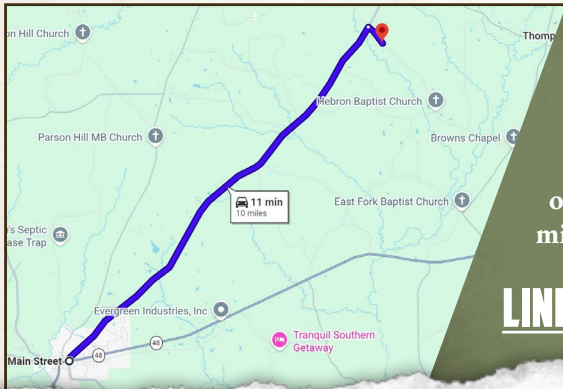


**LEE WHITE** | LAND SPECIALIST  
C: 601-600-1395 | lee@smalltownproperties.com



**ALINDA CRUISE WHITE** | LAND & RESIDENTIAL SPECIALIST  
C: 601-660-4356 | alinda@smalltownproperties.com

*Information is believed to be accurate but not guaranteed.*



Directions from the Intersection of MS-24/Main Street and MS-569 North in Liberty, MS: Travel north on MS-569 for 9.5 miles. Turn right onto Hebron Road and continue 0.5 miles to the property on the right.

[LINK TO GOOGLE MAP DIRECTIONS](#)



**LEE WHITE** | LAND SPECIALIST  
C: 601-600-1395 | lee@smalltownproperties.com



**ALINDA CRUISE WHITE** | LAND & RESIDENTIAL SPECIALIST  
C: 601-660-4356 | alinda@smalltownproperties.com

*Information is believed to be accurate but not guaranteed.*