

ONE EQUITY SHARE IN WILDERNESS WEST

Holmes County and Carroll County, MS



\$167,000



- 2,282± Acres Owned
- 1,985± Acres Leased
- Pine Timber and Hardwood Timber
- Summer and Winter Food Plots
- Great Deer and Turkey Hunting
- Fishing Lake and Ponds
- 55 Miles from Madison, MS



DAVID
BELDEN
REALTOR®

Office: 601.898.2772

Cell: 601.415.3883

DBelden@TomSmithLand.com



A Real Estate Expert You Can Trust

TomSmithLandandHomes.com

Information is believed to be accurate but not guaranteed.

Entrepreneur
2011-2023
BEST
BROKERAGES

Wilderness West, an established equity club in Holmes County and Carroll County in Central MS, offers a unique opportunity for outdoor enthusiasts. The property features 4,267± acres (2,282± acres owned and 1,985± acres leased) and an expansive playground for year-round enjoyment. The diverse landscape, primarily composed of pine and hardwood timber, is meticulously managed through selective cuts and control burns, creating optimal bedding and browsing areas for deer and turkey. Numerous fields, complemented by strategically planted summer and winter food plots, ensure a consistent and abundant food source, enhancing the appeal for deer and turkey hunting. The property's ideal location and effective management practices provide an exceptional setting for pursuing these game species. Additionally, the spring and summer months offer the opportunity for fishing adventures on the main lake or one of the smaller ponds. Ownership privileges extend beyond recreational activities, including year-round access to the lodge and its amenities. Each member enjoys the comfort of a private room and a dedicated gear locker. The property also features a cleaning shed with a convenient walk-in cooler. Owning a share in Wilderness West brings many benefits, from access to extensive acreage and trophy hunting and fishing opportunities to comfortable lodging, enjoyable company, and a welcoming space for family and friends. For more additional details and information, call David Belden today.



DAVID BELDEN
REALTOR®

Office: 601.898.2772

Cell: 601.415.3883

DBelden@TomSmithLand.com



A Real Estate Expert You Can Trust

TomSmithLandandHomes.com

Information is believed to be accurate but not guaranteed.





DAVID BELDEN
REALTOR®

Office: 601.898.2772

Cell: 601.415.3883

DBelden@TomSmithLand.com



A Real Estate Expert You Can Trust

TomSmithLandandHomes.com

Information is believed to be accurate but not guaranteed.





DAVID BELDEN

REALTOR®

Office: 601.898.2772

Cell: 601.415.3883

DBelden@TomSmithLand.com



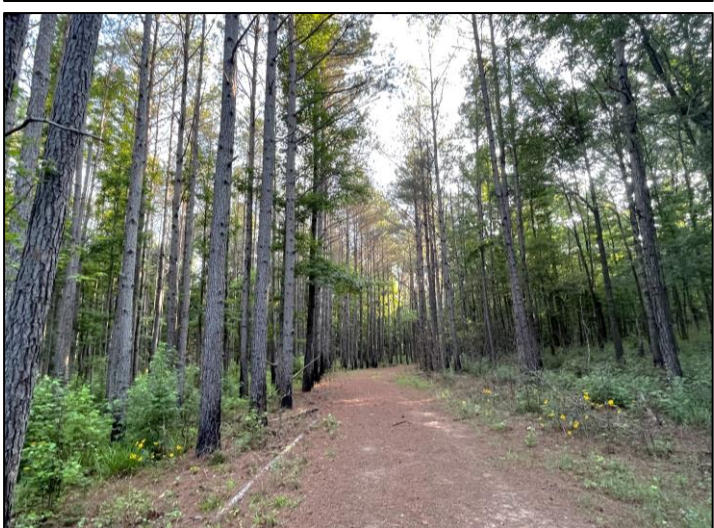
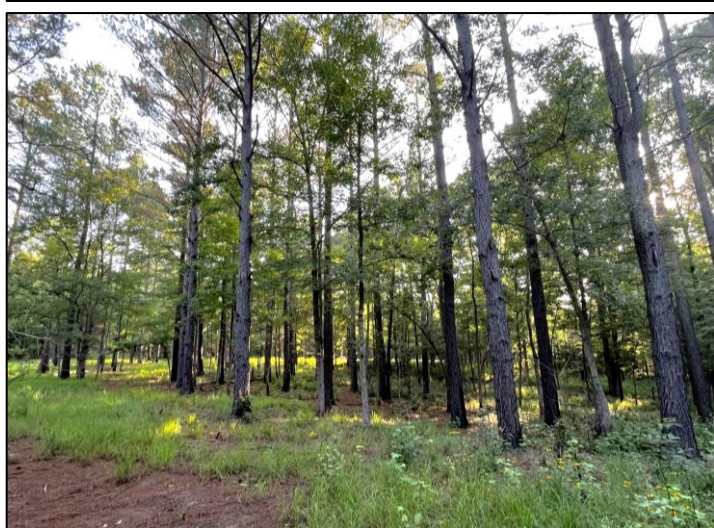
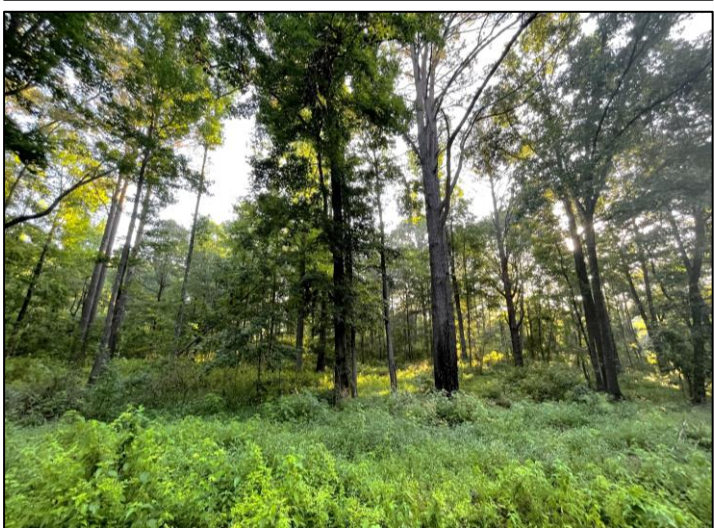
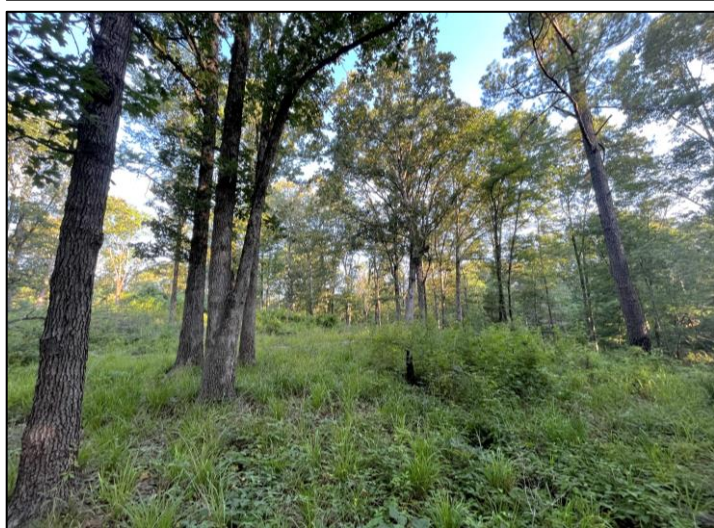
Expect More. Get More.

A Real Estate Expert You Can Trust

TomSmithLandandHomes.com

Information is believed to be accurate but not guaranteed.





DAVID BELDEN
REALTOR®

Office: 601.898.2772

Cell: 601.415.3883

DBelden@TomSmithLand.com

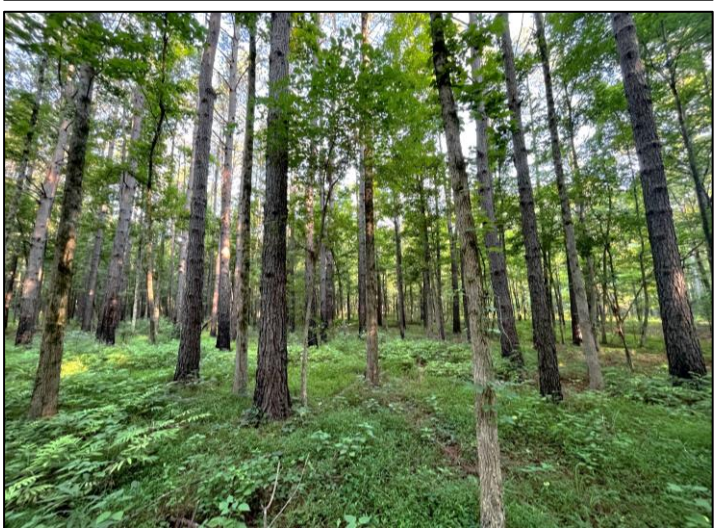
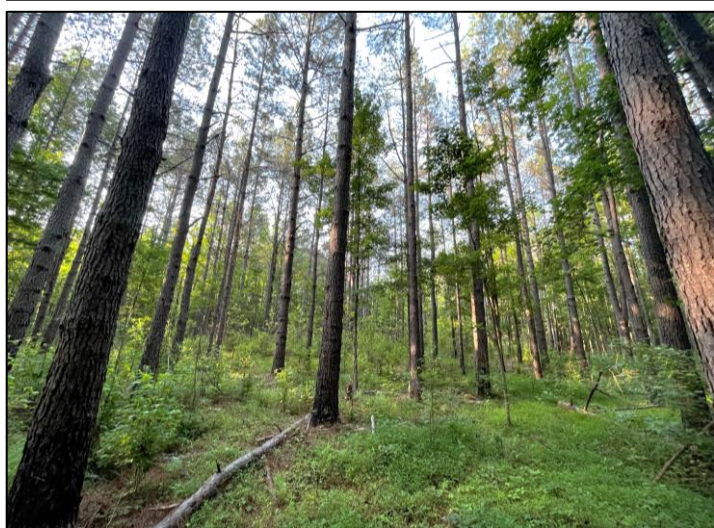
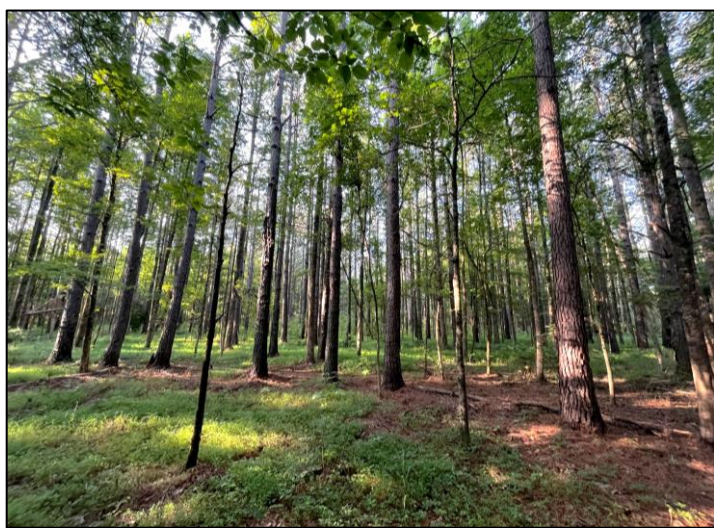


A Real Estate Expert You Can Trust

TomSmithLandandHomes.com

Information is believed to be accurate but not guaranteed.

2011-2023
BEST
BROKERAGES



DAVID BELDEN
REALTOR®

Office: 601.898.2772

Cell: 601.415.3883

DBelden@TomSmithLand.com



A Real Estate Expert You Can Trust

TomSmithLandandHomes.com

Information is believed to be accurate but not guaranteed.





DAVID BELDEN
REALTOR®

Office: 601.898.2772
Cell: 601.415.3883

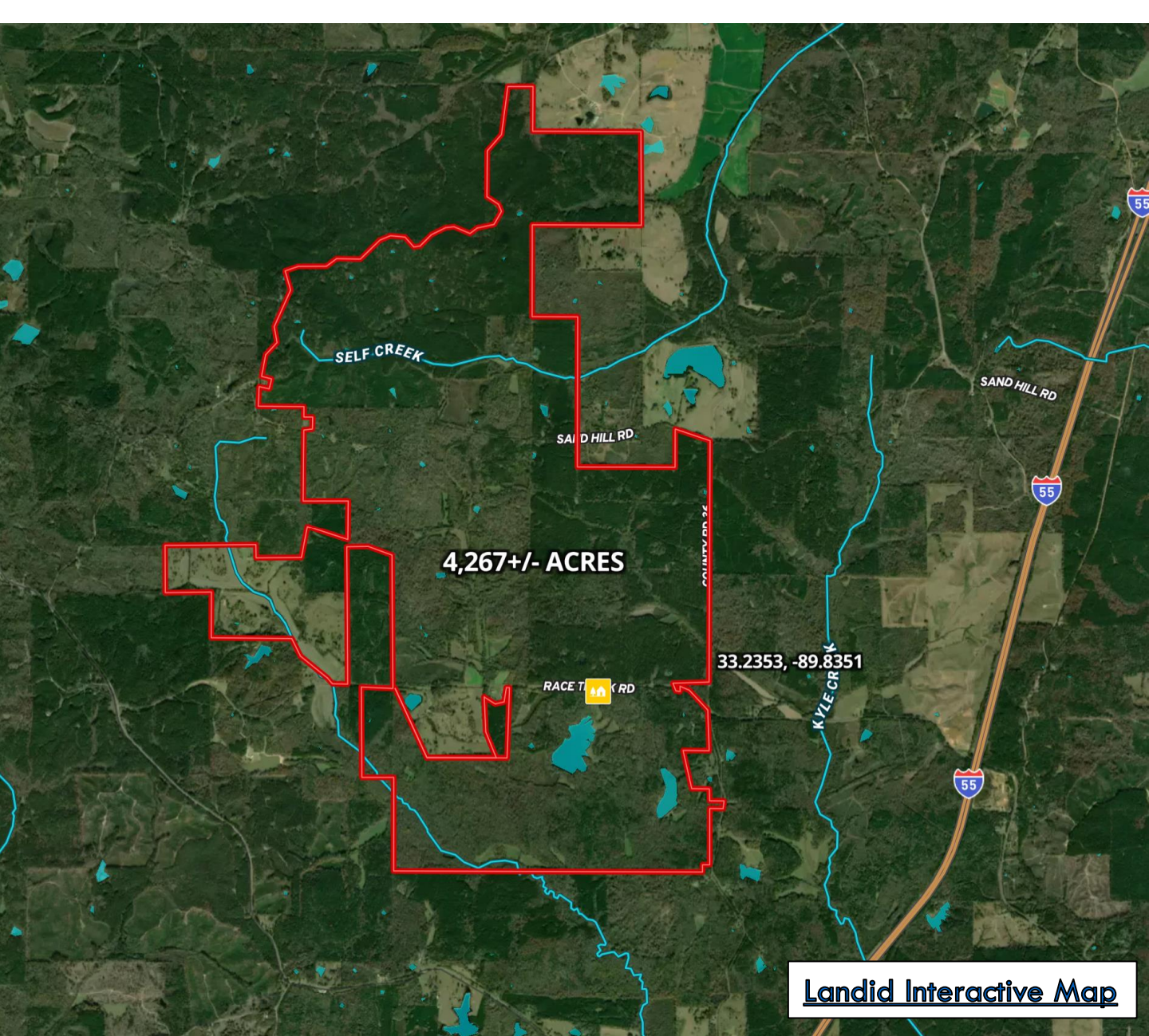
DBelden@TomSmithLand.com



A Real Estate Expert You Can Trust
TomSmithLandandHomes.com

Information is believed to be accurate but not guaranteed.





DAVID BELDEN

REALTOR®

Office: 601.898.2772

Cell: 601.415.3883

DBelden@TomSmithLand.com



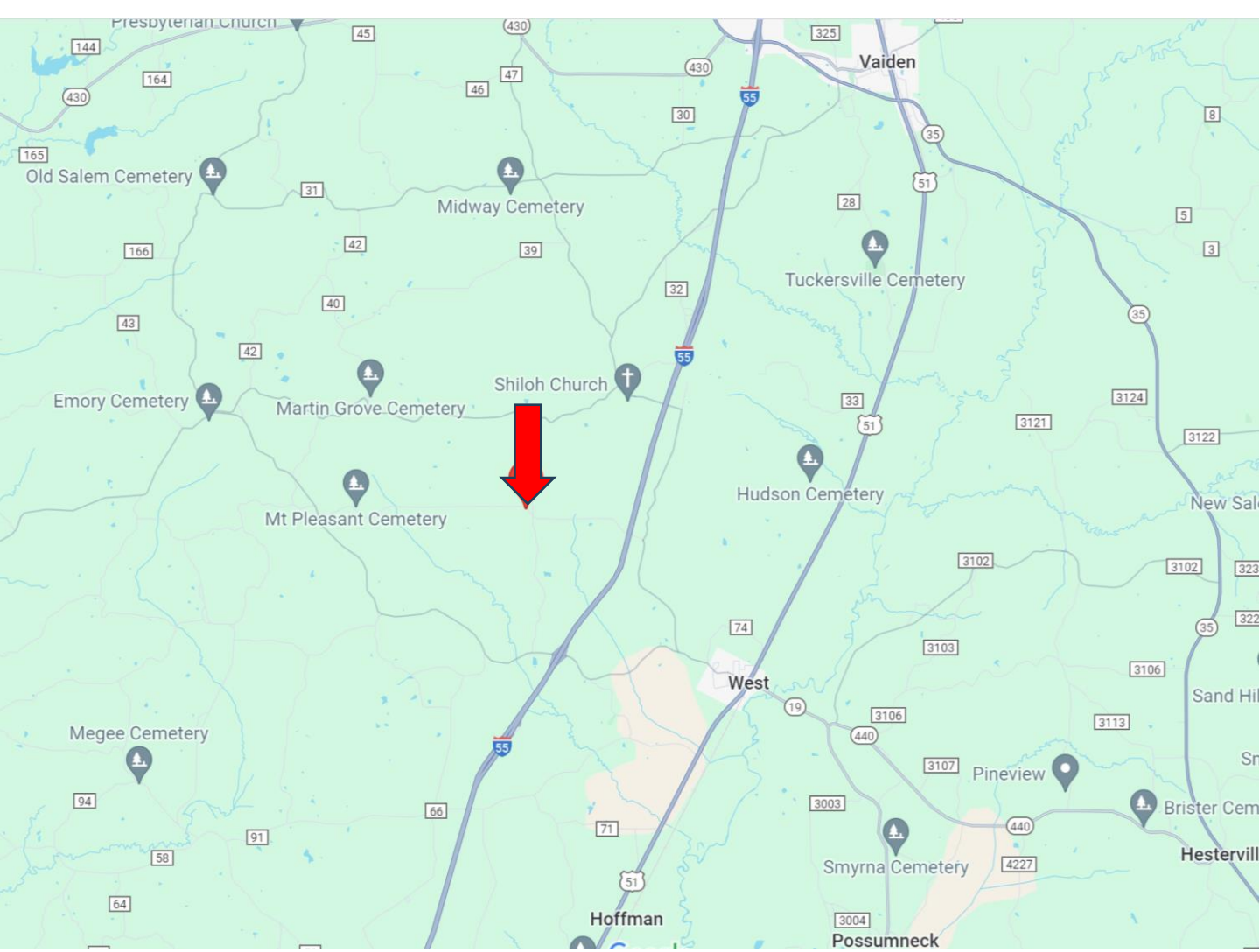
Expect More. Get More.

A Real Estate Expert You Can Trust

TomSmithLandandHomes.com

Information is believed to be accurate but not guaranteed.





Directions from Madison, MS: Travel North on I-55 for 56 miles. Take exit 164 for West, MS. Turn left onto Emory Rd. and travel 0.5 miles. Turn right onto County Line Rd. and travel 1.3 miles. Turn right to stay on County Line Rd. and continue 0.9 miles. Turn left onto Mt. Pleasant Rd./Race Track Rd. After 0.9 miles, the property entrance will be on your left. [GOOGLE MAP LINK](#)



DAVID BELDEN
REALTOR®

Office: 601.898.2772
Cell: 601.415.3883
DBelden@TomSmithLand.com



A Real Estate Expert You Can Trust

TomSmithLandandHomes.com

Information is believed to be accurate but not guaranteed.

