

**Spacious 4-bedroom 2-bathroom brick home in Duplin
County, NC!**
117 S Thomas Street
Beulaville, NC 28518

\$224,000
0.110± Acres
Duplin County



**Spacious 4-bedroom 2-bathroom brick home in Duplin County, NC!
Beulaville, NC / Duplin County**

SUMMARY

Address

117 S Thomas Street

City, State Zip

Beulaville, NC 28518

County

Duplin County

Type

Residential Property, Single Family

Latitude / Longitude

34.922730 / -77.772397

Dwelling Square Feet

2474

Bedrooms / Bathrooms

4 / 2

Acreage

0.110

Price

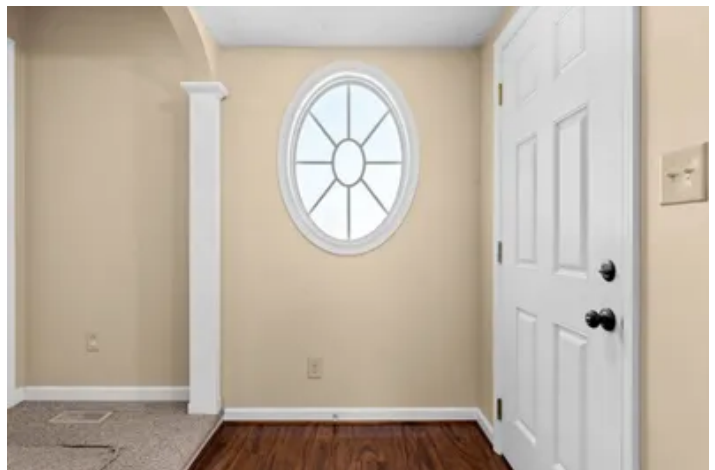
\$224,000

Property Website

<https://www.mossoakproperties.com/property/spacious-4-bedroom-2-bathroom-brick-home-in-duplin-county-nc-duplin-north-carolina/111091/>



TOTAL: 2474 sq. ft.
FLOOR 1: 1770 sq. ft. FLOOR 2: 204 sq. ft.
EXCLUDED AREAS: PORCH: 100 sq. ft. COVERED PATIO: 197 sq. ft. UTILITY: 5 sq. ft.



Spacious 4-bedroom 2-bathroom brick home in Duplin County, NC! Beulaville, NC / Duplin County

PROPERTY DESCRIPTION

Spacious 4-bedroom 2-bathroom brick home featuring over 2400 sq feet in Duplin County, NC!

Welcome to 117 S Thomas Street in Beulaville, NC! Offering over 2,400 heated square feet, this spacious 4-bedroom, 2- bathroom home provides the perfect blend of comfort, functionality, and convenience. The thoughtfully designed floor plan features a primary suite on the main level, complete with a large walk-in closet. Two additional bedrooms and a full bathroom are also conveniently located downstairs.

The updated kitchen opens to inviting living spaces, creating a warm atmosphere for everyday living and entertaining. Upstairs features a fourth bedroom and a versatile bonus room for a home office, playroom, or guest space. Throughout the home, you'll find abundant storage to keep everything organized and within reach.

The oversized mudroom with direct access to the attached carport offers a large utility sink, extra cabinetry, and ample storage space. Step outside to enjoy the patio and side yard area, perfect for grilling, entertaining guests, or relaxing after a long day.

Situated on a corner lot in the heart of Beulaville, this home is within walking distance of local parks, the elementary school, and the middle school. Enjoy small-town living with the convenience of being just 20 minutes from Jacksonville and approximately 50 minutes from Wilmington.

Priced to sell, this property offers the space, storage, and the opportunity to make it your own. Schedule your private showing today!

For more information on this and other land for sale in Duplin County, contact Casey Davis at [910-330-9506](tel:910-330-9506) or by email at casey@mossyoakproperties.com, or visit landandfarmsrealty.com.

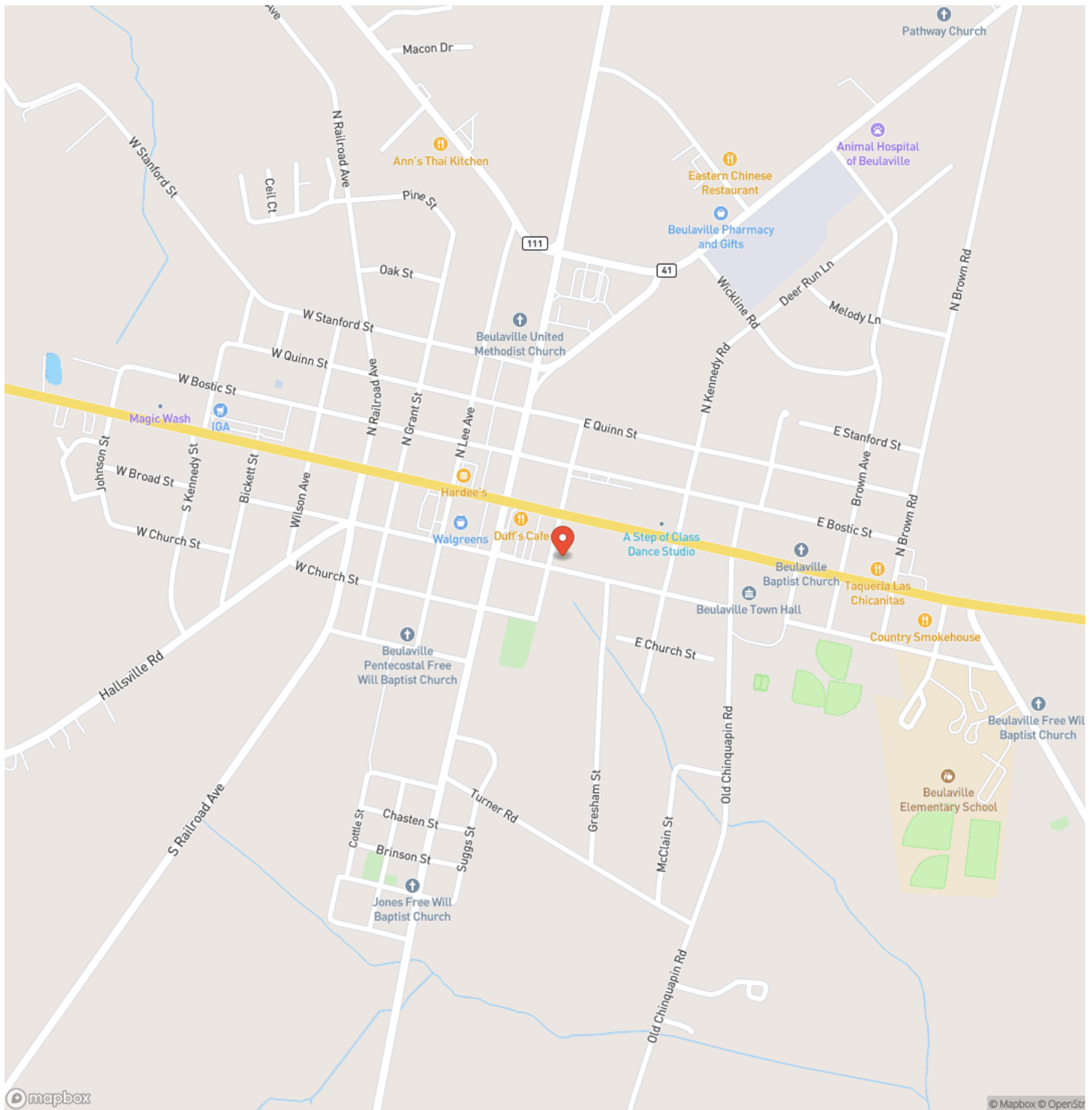


**Spacious 4-bedroom 2-bathroom brick home in Duplin County, NC!
Beulaville, NC / Duplin County**



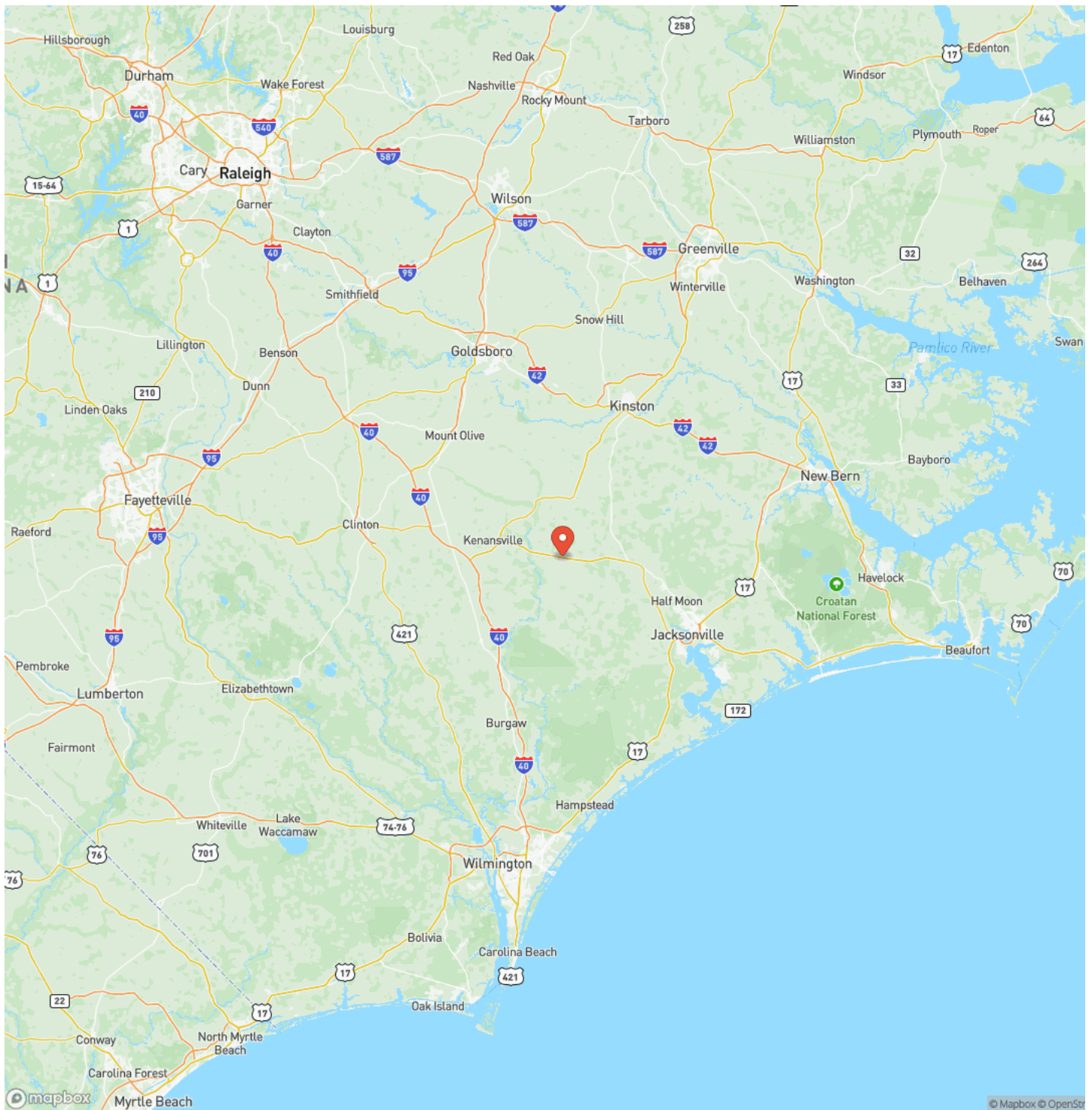
Spacious 4-bedroom 2-bathroom brick home in Duplin County, NC!
Beulaville, NC / Duplin County

Locator Map



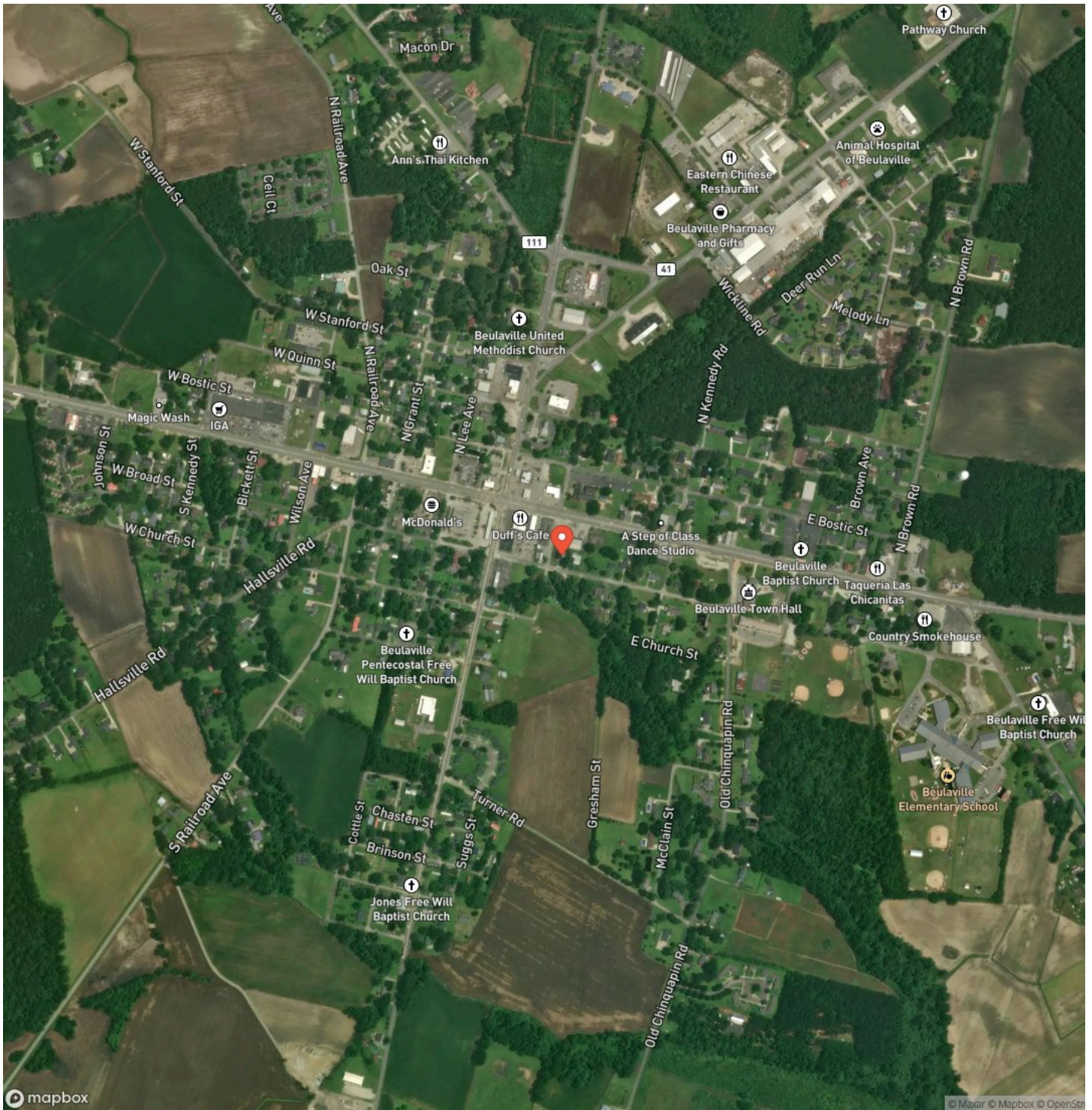
Spacious 4-bedroom 2-bathroom brick home in Duplin County, NC!
Beulaville, NC / Duplin County

Locator Map



Spacious 4-bedroom 2-bathroom brick home in Duplin County, NC!
Beulaville, NC / Duplin County

Satellite Map



DISCLAIMERS

Information in this brochure is provided solely for information purposes and does not constitute an offer to sell or advertise real estate outside the states in which broker or agent licensed. The information presented has been obtained from sources deemed to be reliable, but is not guaranteed or warranted by the agent, broker, or the sellers of these properties. This offering is subject to errors, omissions, prior sale, price change, correction or withdrawal from the market without notice. All references to age, square footage, income, expenses, acreage, carrying capacity, and land classification, etc. are approximate. Prospective buyers are chargeable with and expected to conduct their own independent investigation of the information and the property and to rely only on those results. Sellers reserve the right to accept or reject any and all offers without liability to any buyer or cooperating broker.

Maps are provided for illustration purposes only, the accuracy is not warranted. Parcels on interactive maps are not adjusted to match aerial backgrounds. This information is for reference purposes only and is not a legal document. Data maps contain errors. The seller and seller's agent are making known to all potential buyers that there may be variations between the location of the existing fence lines and the legal description of the deeded property. Seller and seller's agent make no warranties with regard to the location of the fence lines in relationship to the deeded property lines, nor does the Seller make any warranties or representations with regard to the specific acreage contained within the fenced property lines. Seller is selling the property in an "as is" condition, which includes the location of the fences as they exist. Boundaries shown on the accompanying maps are approximate, based on county parcel data. The maps are not to scale. The accuracy of the maps is not guaranteed. Prospective buyers are encouraged to verify fence lines, deeded property lines and acreages using a licensed surveyor at their own expense.



Mossy Oak Properties Land and Farms Realty
101 Budleigh Street, Suite F
Manteo, NC 27954
(844) 480-5263
<https://www.mossoakproperties.com/>

