



# Diverse Recreational Tract

**331.4± ACRES IN  
CARROLL COUNTY, MS  
\$1,015,250**



Located in the foothills of the Mississippi Delta, this 331.4± acre property in Carroll County is perfect for investment and leisure. It features a mix of mature hardwoods and replanted pines, ideal for hunting or as a peaceful family retreat. The land offers plenty of space for outdoor activities and is easily accessible with 1,600 feet of frontage road. Fisher Branch Creek borders the property, adding natural beauty and a water source for wildlife. With 66.1± acres of hardwoods and 238± acres of replanted pine, the property provides potential timber income and a diverse habitat for wildlife. Whether you are looking for a hunting ground or a family getaway, this land offers a unique opportunity. Take your chance to own a piece of Mississippi's natural beauty. Contact David today to learn more!



**DAVID  
BELDEN**  
REALTOR®

Office: 601.898.2772

Cell: 601.415.3883

DBelden@TomSmithLand.com



**A Real Estate Expert You Can Trust**

TomSmithLandandHomes.com

Information is believed to be accurate but not guaranteed.







**A Real Estate Expert**  
*You Can Trust!*

**DAVID BELDEN**  
REALTOR®

O: 601.898.2772 C: 601.415.3883

DBelden@TomSmithLand.com

TomSmithLandandHomes.com

Tom  
Smith  
LAND AND  
HOMES

Expect More. Get More.

2011-2024  
BEST  
BROKERAGES

Information is believed to be accurate but not guaranteed.





**A Real Estate Expert**  
*You Can Trust!*

**DAVID BELDEN**  
REALTOR®

O: 601.898.2772 C: 601.415.3883

DBelden@TomSmithLand.com

TomSmithLandandHomes.com

Tom  
Smith  
LAND AND  
HOMES

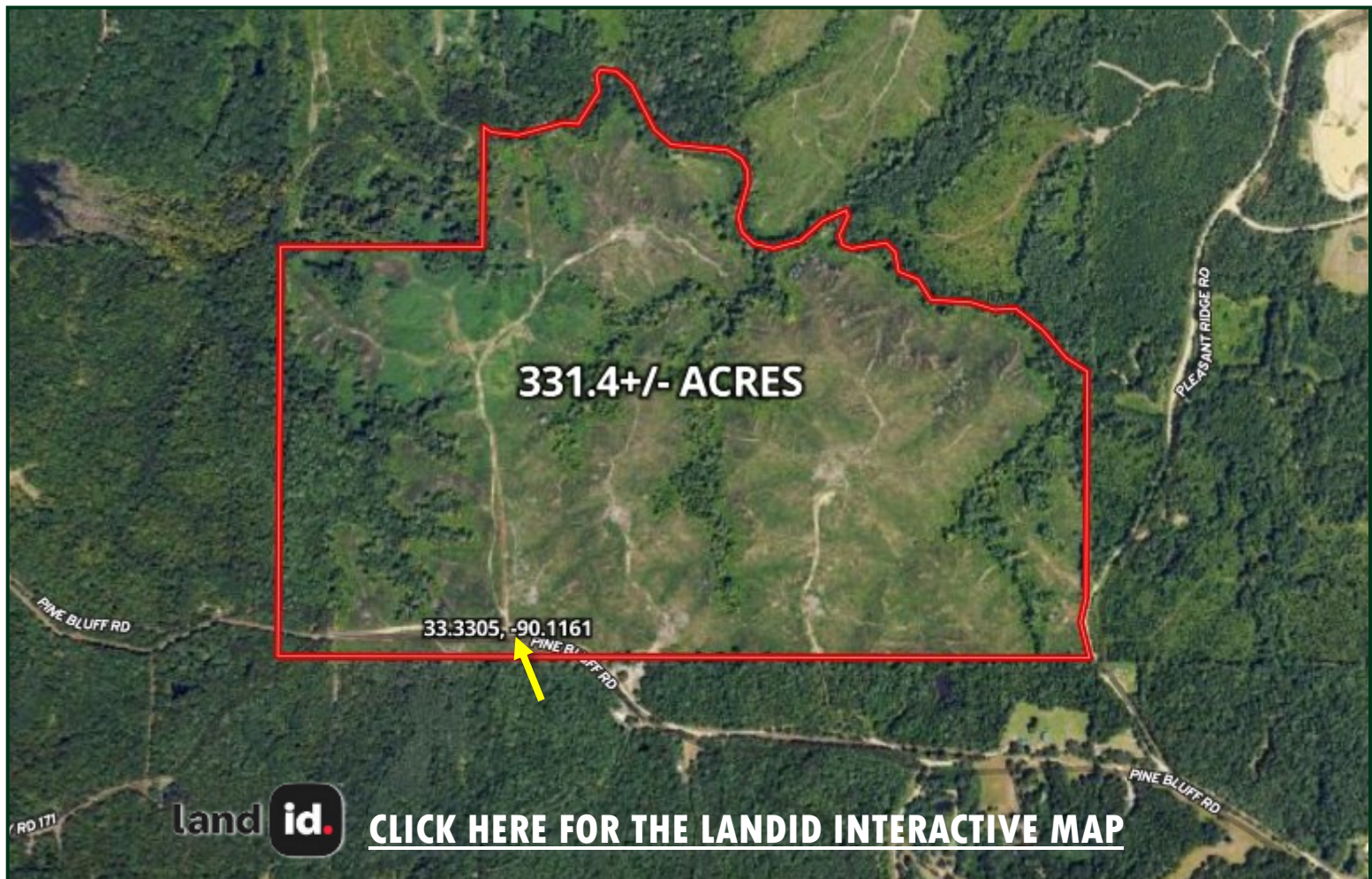
Expect More. Get More.

2011-2024  
BEST  
BROKERAGES

Information is believed to be accurate but not guaranteed.



# Aerial Map



[CLICK HERE FOR THE LANDID INTERACTIVE MAP](#)

**A Real Estate Expert**  
*You Can Trust!*

**DAVID BELDEN**  
REALTOR®

O: 601.898.2772 C: 601.415.3883

DBelden@TomSmithLand.com

TomSmithLandandHomes.com

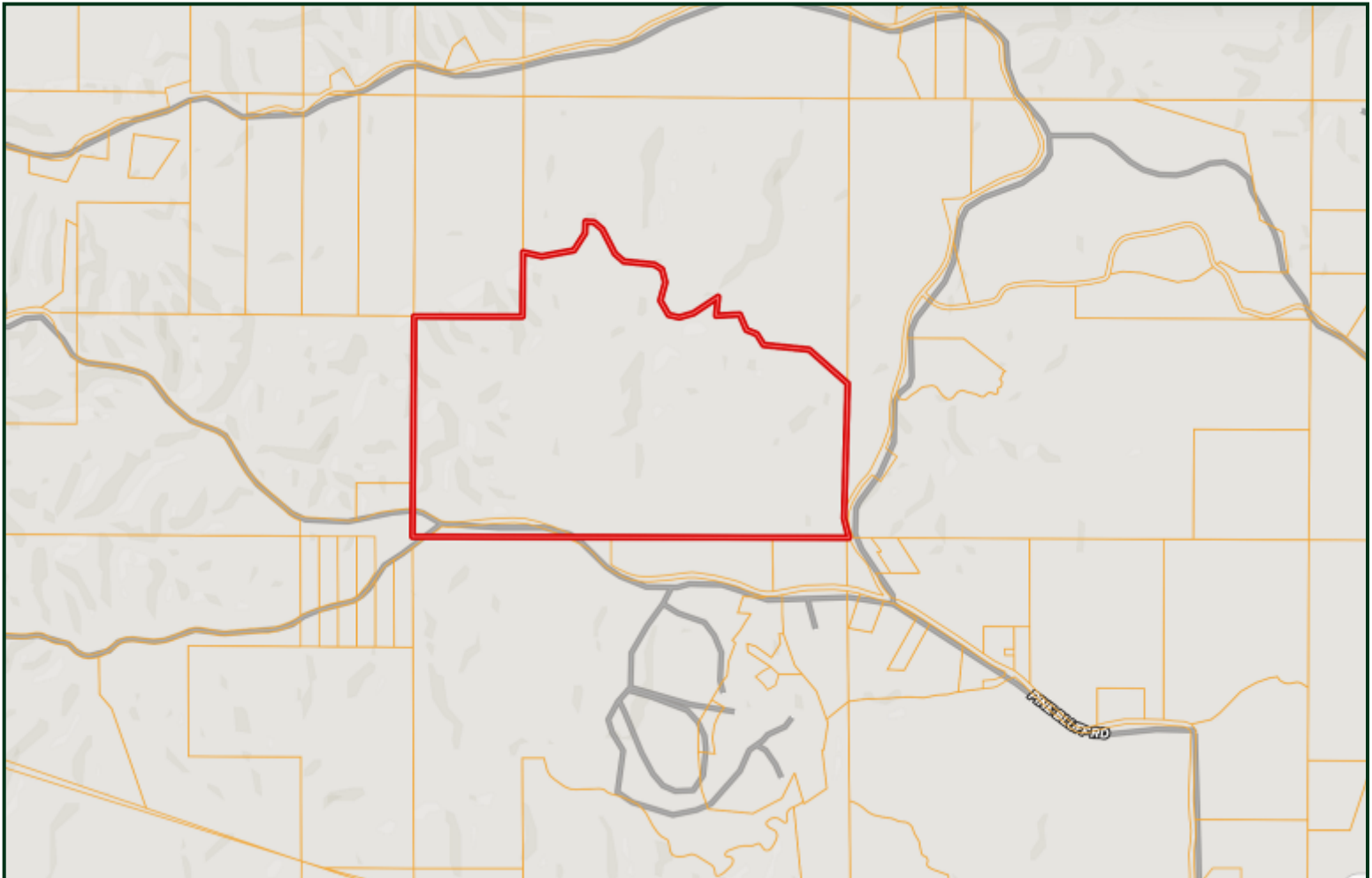


Expect More. Get More.



Information is believed to be accurate but not guaranteed.

# Ownership Map



**A Real Estate Expert**  
*You Can Trust!*

**DAVID BELDEN**  
REALTOR®

O: 601.898.2772 C: 601.415.3883

DBelden@TomSmithLand.com

TomSmithLandandHomes.com



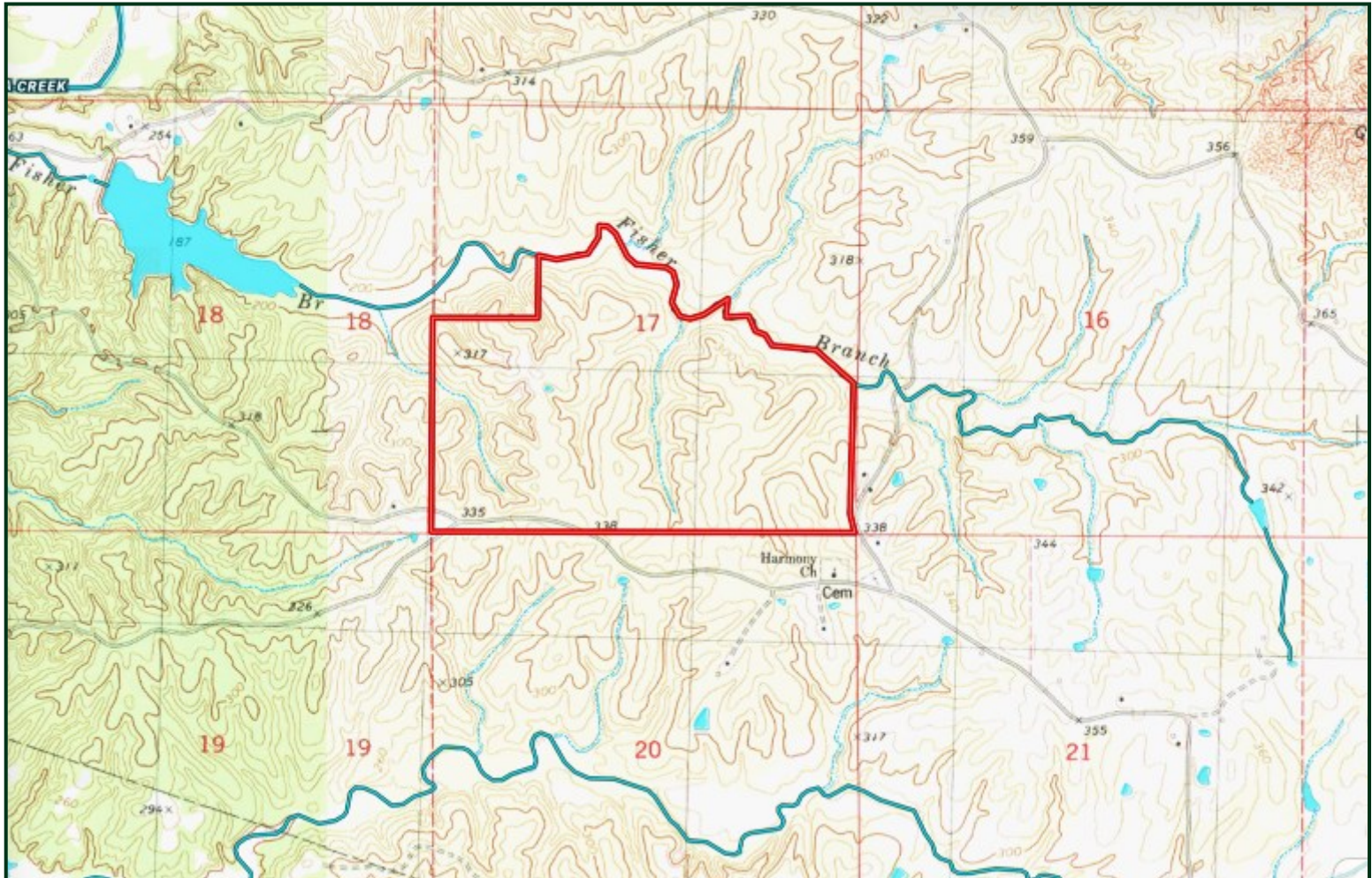
Expect More. Get More.



Information is believed to be accurate but not guaranteed.



# Topo Map



**A Real Estate Expert**  
*You Can Trust!*

**DAVID BELDEN**  
REALTOR®

O: 601.898.2772 C: 601.415.3883

DBelden@TomSmithLand.com

TomSmithLandandHomes.com



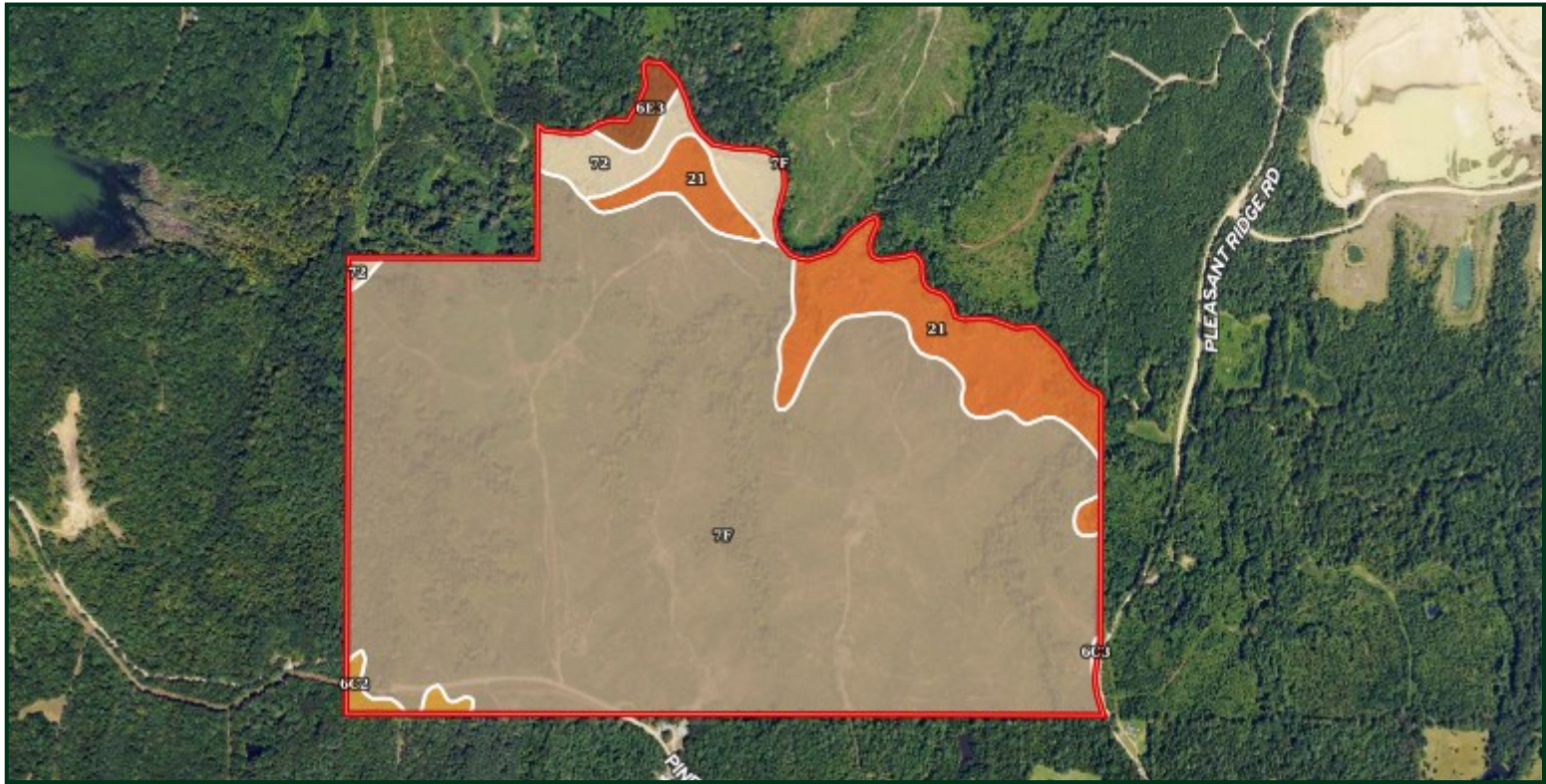
Expect More. Get More.



Information is believed to be accurate but not guaranteed.



# Soil Map



SOIL CODE	SOIL DESCRIPTION	ACRES	%	CPI	NCCPI	CAP
7F	Memphis-Natchez association, 12 to 50 percent slopes	287.5 2	85.92	0	19	7e
21	Adler silt loam, occasionally flooded	30.38	9.08	0	86	2w
72	Crevasse sand, occasionally flooded	11.36	3.39	0	19	4s
6E3	Memphis silt loam, 12 to 40 percent slopes, severely eroded	2.91	0.87	0	18	7e
6C2	Memphis silt loam, 5 to 8 percent slopes, eroded	2.26	0.68	0	82	3e
6C3	Memphis silt loam, 5 to 8 percent slopes, severely eroded, south	0.18	0.05	0	77	4e

**A Real Estate Expert**  
*You Can Trust!*

**DAVID BELDEN**  
REALTOR®

O: 601.898.2772 C: 601.415.3883

DBelden@TomSmithLand.com

TomSmithLandandHomes.com

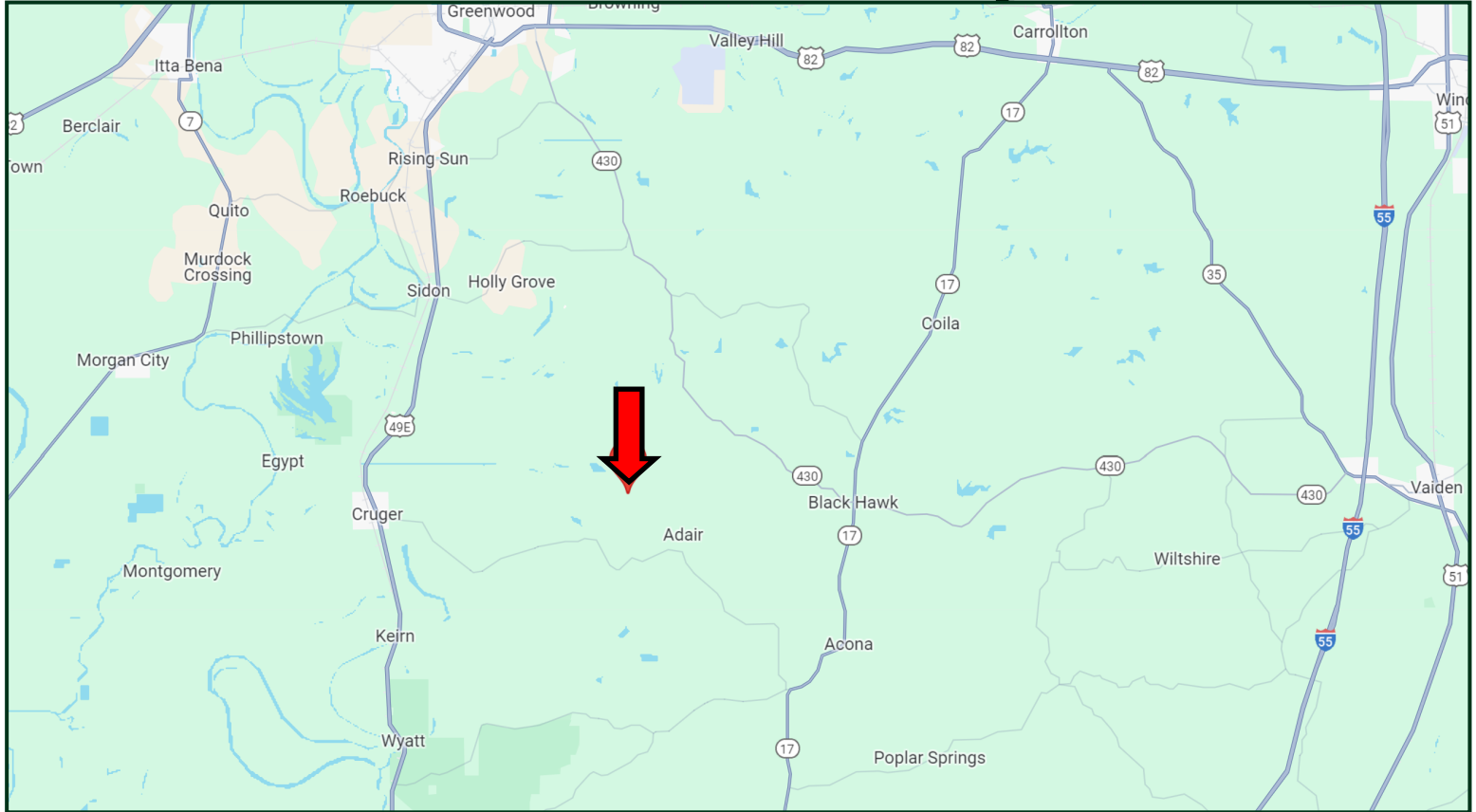
Tom  
Smith  
LAND AND  
HOMES

Expect More. Get More.

2011-2024  
NATIONAL  
BEST  
BROKERAGES

Information is believed to be accurate but not guaranteed.

# Directional Map



**Directions from Greenwood, MS:** Travel Hwy 49E south for 8.1 miles. Turn left onto Catfish Bayou Rd and travel 3 miles. Continue onto Pine Bluff Rd. After 4.7 miles, the property will be on the left. [GOOGLE MAP LINK](#)



DAVID  
**BELDEN**  
REALTOR®

Office: 601.898.2772

Cell: 601.415.3883

DBelden@TomSmithLand.com



Expect More. Get More.

A Real Estate Expert You Can Trust

TomSmithLandandHomes.com

Information is believed to be accurate but not guaranteed.

