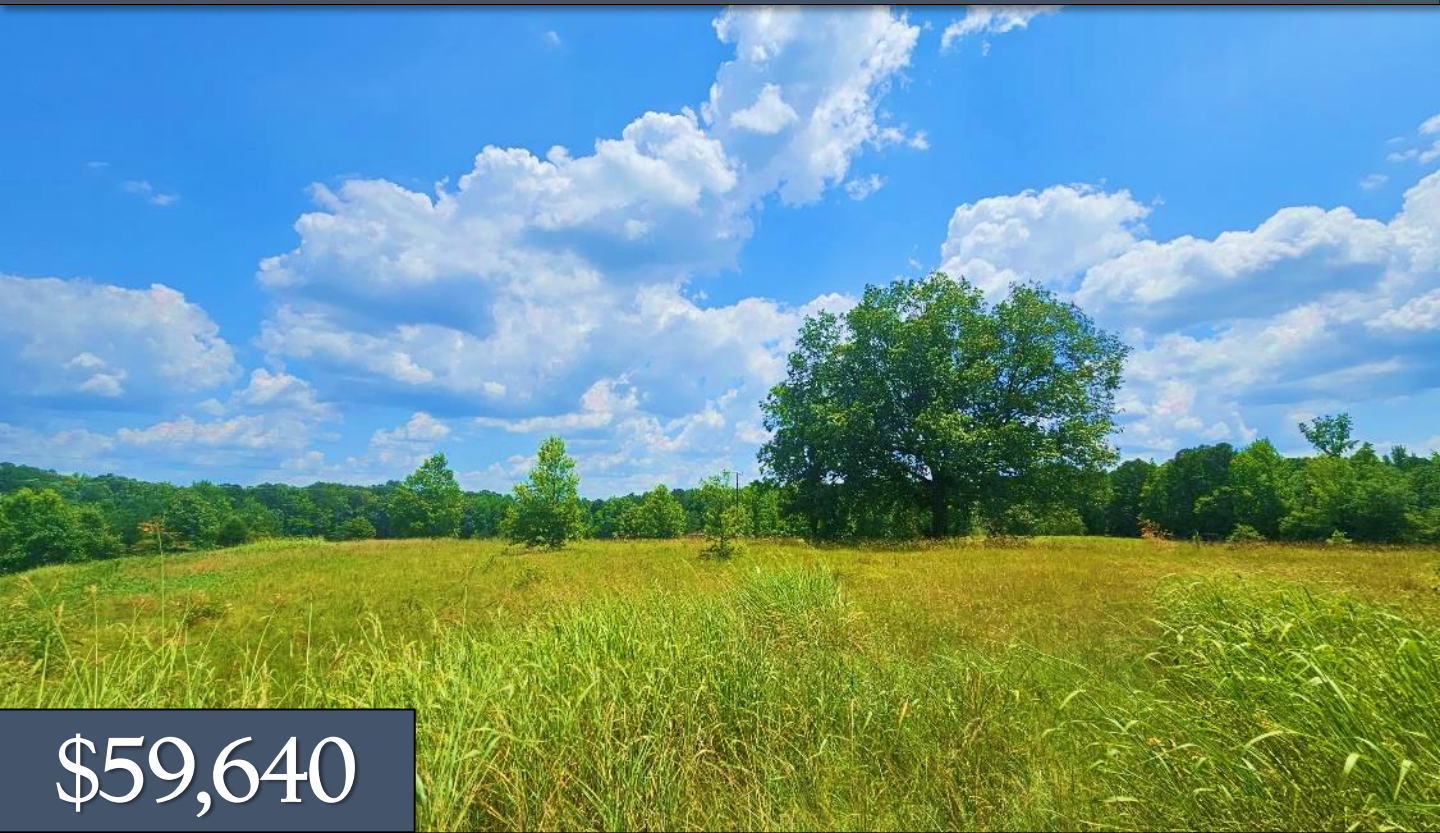


14.2± ACRE HOMESITE

WEBSTER COUNTY, MISSISSIPPI



\$59,640

Are you looking for the perfect home site? No need to look any further! This 14.2+/- acre property in Webster County has it all. Features include gently rolling pastureland, a small pond, paved road frontage, access to utilities, and convenient proximity to town. It is 15 minutes to Eupora and 40 minutes to Starkville. Call Jami today for a private showing!



**JAMI
PRUITT**
REALTOR®

Office: 662.268.6333

Cell: 662.858.0608

Jami@TomSmithHomes.com



Expect More. Get More.

A Real Estate Expert You Can Trust

TomSmithLandandHomes.com

Information is believed to be accurate but not guaranteed.





A Real Estate Expert *You Can Trust!*

JAMI PRUITT
REALTOR®

O: 662.268.6333 C: 662.858.0608

Jami@TomSmithHomes.com

TomSmithLandandHomes.com



Expect More. Get More.





A Real Estate Expert
You Can Trust!

JAMI PRUITT
REALTOR®

O: 662.268.6333 C: 662.858.0608

Jami@TomSmithHomes.com

TomSmithLandandHomes.com



Expect More. Get More.



Information is believed to be accurate but not guaranteed.

AERIAL MAP



[CLICK HERE FOR AN INTERACTIVE MAP](#)

A Real Estate Expert
You Can Trust!

JAMI PRUITT
REALTOR®

O: 662.268.6333 C: 662.858.0608

Jami@TomSmithHomes.com

TomSmithLandandHomes.com

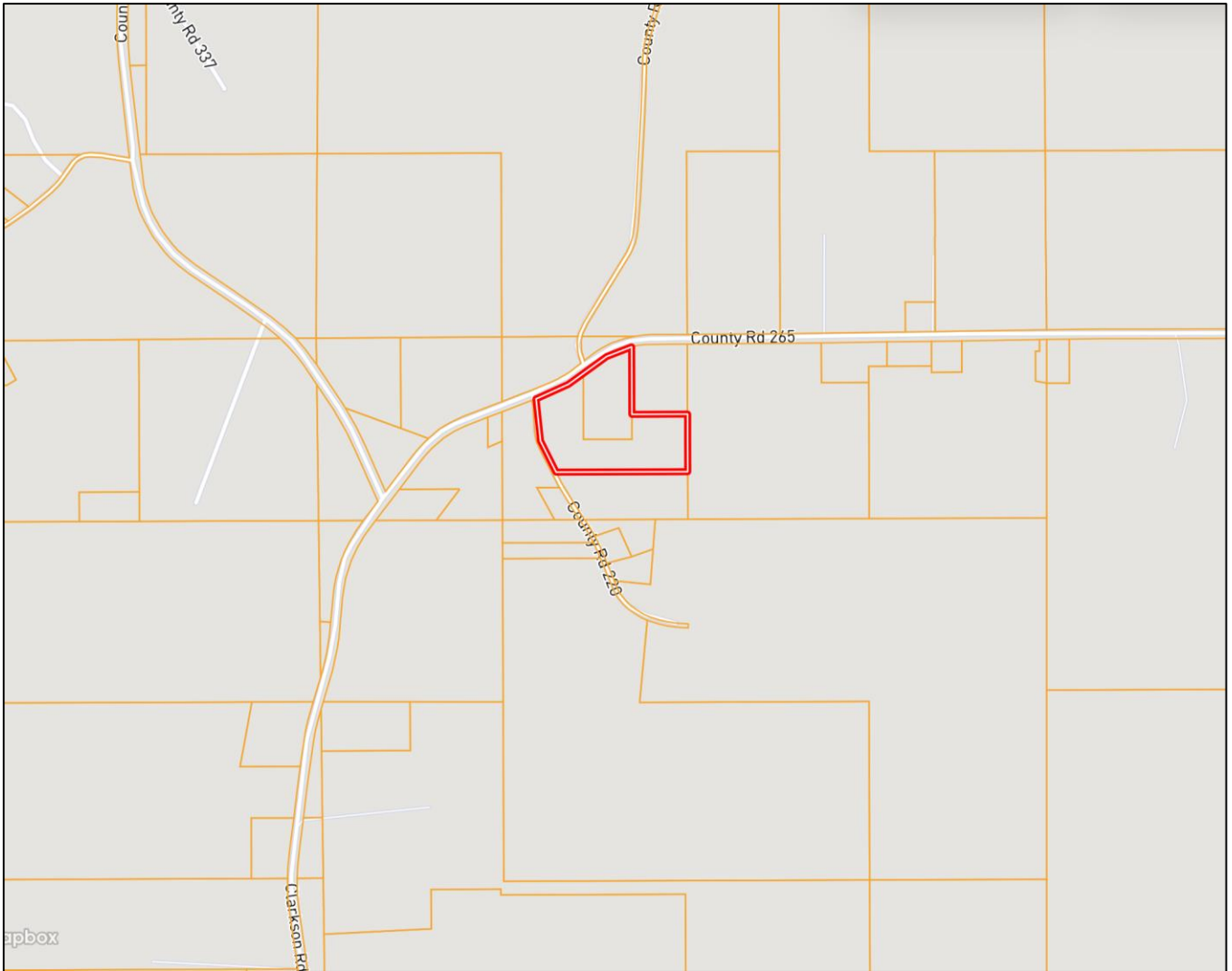


Expect More. Get More.



Information is believed to be accurate but not guaranteed.

OWNERSHIP MAP



A Real Estate Expert
You Can Trust!

JAMI PRUITT
REALTOR®

O: 662.268.6333 C: 662.858.0608

Jami@TomSmithHomes.com

TomSmithLandandHomes.com

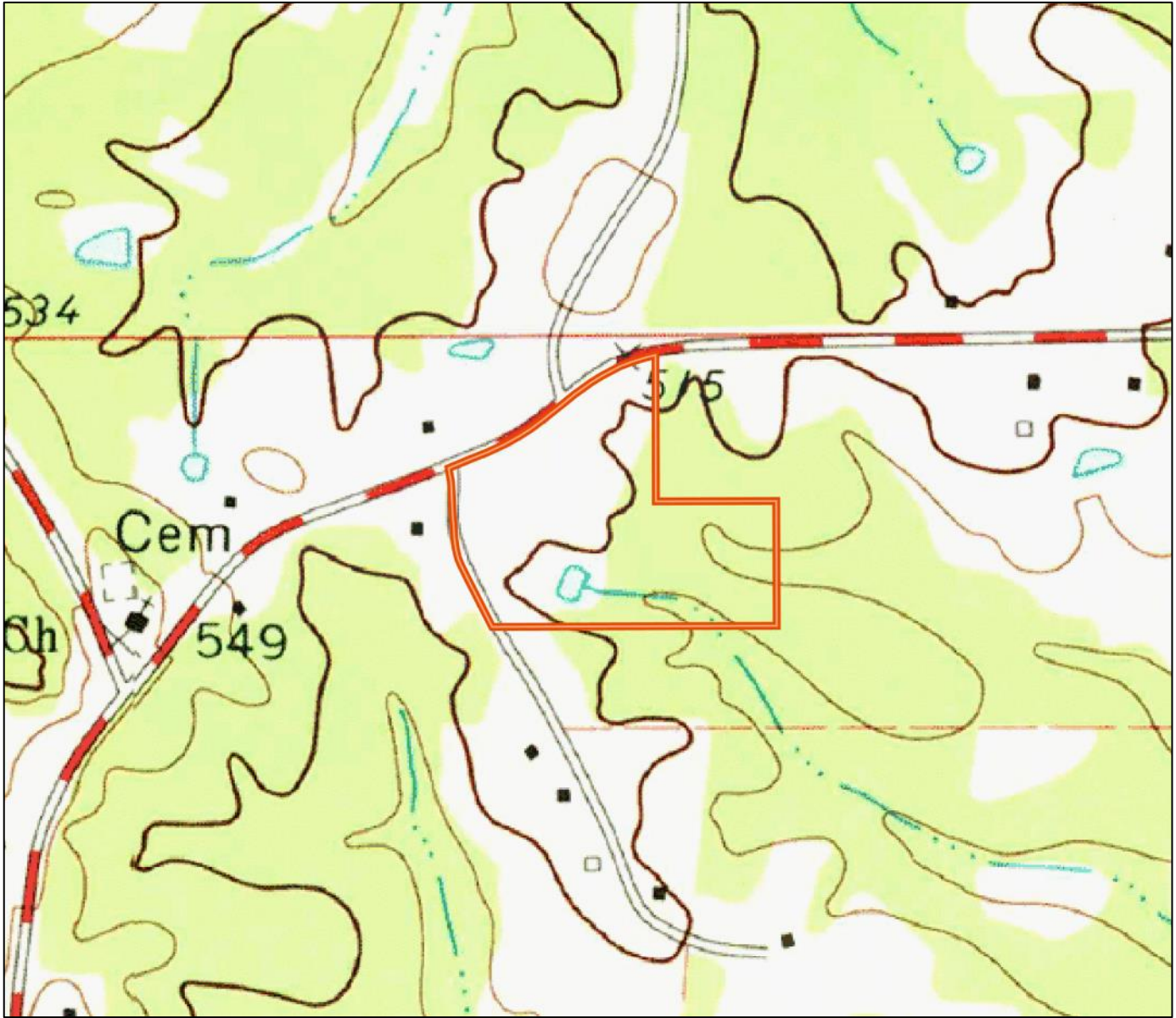


Expect More. Get More.



Information is believed to be accurate but not guaranteed.

TOPO MAP



A Real Estate Expert
You Can Trust!

JAMI PRUITT
REALTOR®

O: 662.268.6333 C: 662.858.0608

Jami@TomSmithHomes.com

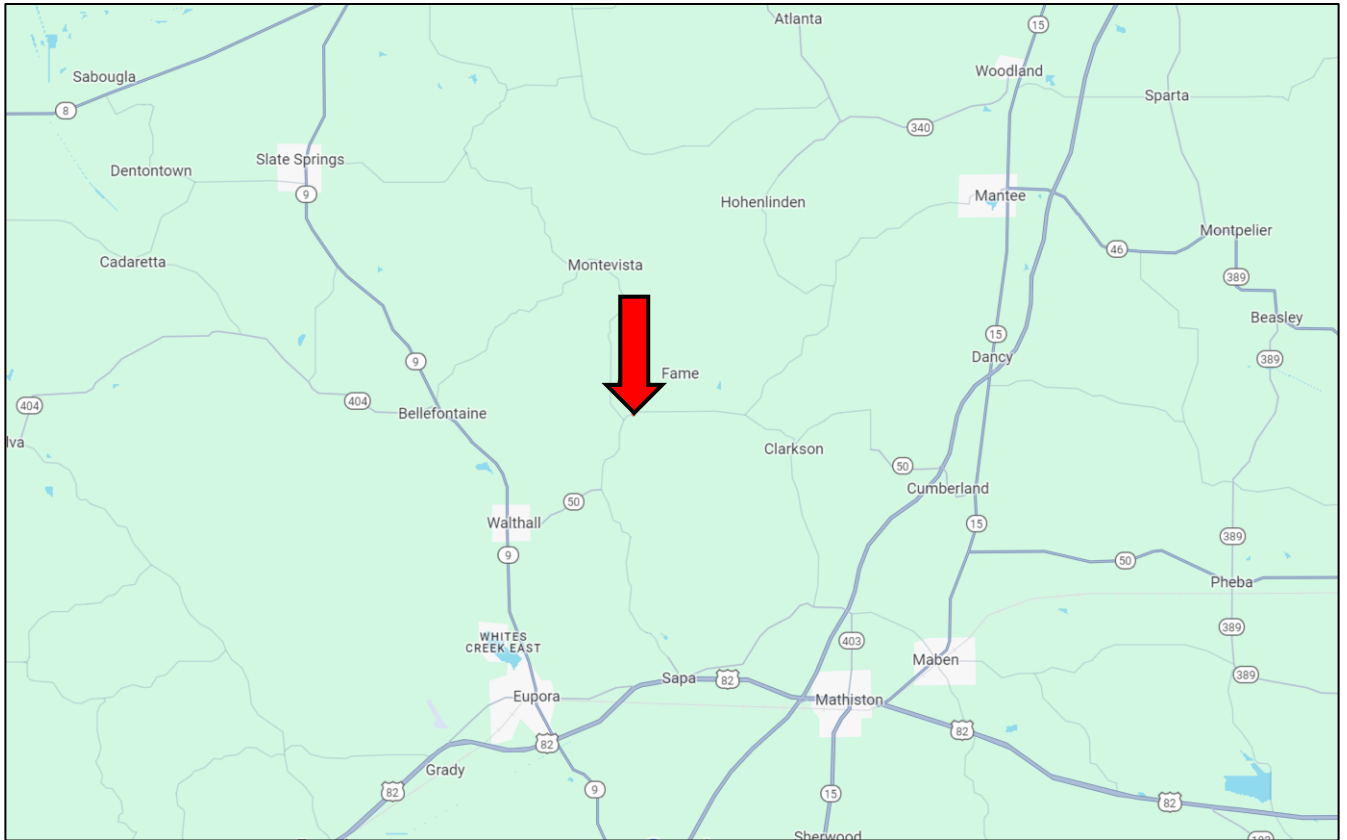
TomSmithLandandHomes.com



Expect More. Get More.



DIRECTIONAL MAP



Directions from the Intersection of Hwy 9 and Hwy 82 in Eupora, MS:
Travel North on Hwy 9 for 5.9 miles. Turn right onto MS-50 E/Avent Rd. and travel 2.8 miles. Turn left onto Clarkson Rd and travel 2.4 miles. The property will be on the right. [GOOGLE MAP LINK](#)



**JAMI
PRUITT**
REALTOR®

Office: 662.268.6333

Cell: 662.858.0608

Jami@TomSmithHomes.com



Expect More. Get More.

A Real Estate Expert You Can Trust

TomSmithLandandHomes.com

Information is believed to be accurate but not guaranteed.

