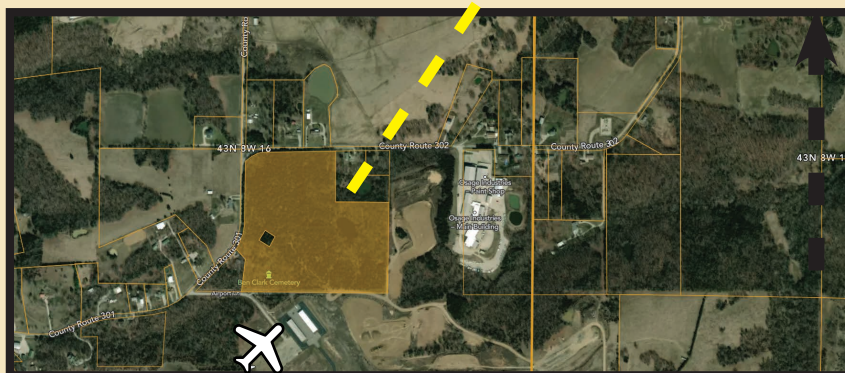
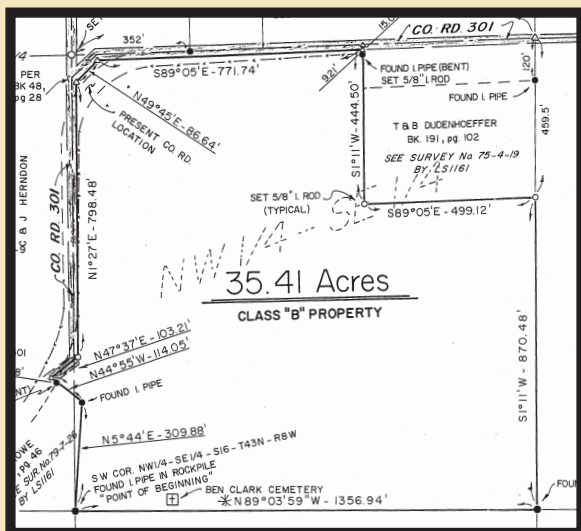


35 AC. (+/-) SITE FOR SALE LINN, MO.

(Property Adjoins State Technology College and Airport)



- Prime Development Site
- Business Park (Potential commercial/industrial park)
- Will Divide
- 3 phase electric available
- Ideally Situated Adjoining MO. State Technology College
- Adjoin Tech College Airport/ Airstrip
- Road Frontage Along 3 Sides (Hwys 301, 302, and Airport Rd.)
- Topography, Primarily Level Site
- Linn, Mo. is part of the Meramec Regional Planning Commission (MRPC) Economic Development Commission for 8 counties.



RE/MAX
JEFFERSON CITY

Jon Beasley

CELL 573.353.5557 OFFICE 573.761.3436
jon@jeffcityhomes.com

Norma Nisbet
ALC, CCIM, CIPS
normanisbet@realtor.com
www.VistaPropertiesandInvestments.com

Office: 314.843.6048
Fax: 314.842.4810



This information has been obtained from sources believed reliable, but has not been verified for accuracy or completeness. You should conduct a careful, independent investigation of the property and verify all information. Any reliance on this information is solely at your own risk. Photos herein are the property of their respective owners. Use of these images without the consent of the owner or Vista Properties and Investments LLC is prohibited. All rights reserved.

35 AC. (+/-) SITE FOR SALE LINN, MO.

(Property Adjoins State Technology College and Airport)



✈ 35 Acre Lot & Airport

State Technical College of Missouri

State Technical College of Missouri has their main 360 ac. campus located in Linn, MO. with another Career Center (Lewis and Clark) located in St. Charles, Mo.

The Linn, Mo. campus is comprised of 11 academic buildings and technical laboratories, campus housing and a public airport which includes an AVGAS fueling station.

Rated 3rd in the Country by Forbes in the Tech College category, Missouri State Tech has an alumni of over 12,000 since 1963, additional programs unique to "State Tech of Mo." include:

- Automation & Robotics Technology/Advanced Manufacturing
- Aviation Maintenance
- Caterpillar Dealer Service Technician option in Heavy Equipment Technology
- Electric Power
- Generation Technology
- Electrical Distribution Systems
- Heartland International Dealers
- Association in Medium/Heavy Truck Technology
- Nuclear Technology
- Outdoor Power and Sports Technology
- Golf Course/Landscape Equipment Management Option

APPROXIMATE MILEAGE TO LINN, MO. MISSOURI STATE TECHNOLOGY CAMPUS

Columbia, Mo.	53 miles
St. Louis, Mo.	102 miles
Kirksville, Mo.	142 miles
Springfield, Mo.	170 miles
Kansas City, Mo.	179 miles
Cape Girardeau, Mo.	200 miles



RE/MAX
JEFFERSON CITY

Jon Beasley

CELL 573.353.5557 OFFICE 573.761.3436
jon@jeffcityhomes.com

Norma Nisbet
ALC, CCIM, CIPS
normanisbet@realtor.com
www.VistaPropertiesandInvestments.com

Office: 314.843.6048
Fax: 314.842.4810



This information has been obtained from sources believed reliable, but has not been verified for accuracy or completeness. You should conduct a careful, independent investigation of the property and verify all information. Any reliance on this information is solely at your own risk. Photos herein are the property of their respective owners. Use of these images without the consent of the owner or Vista Properties and Investments LLC is prohibited. All rights reserved.