

**40± ACRES**  
**HUMPHREYS COUNTY, MS**  
**\$220,000**



**SMALLTOWN**  
HUNTING PROPERTIES  
& REAL ESTATE

OFFICE (662) 846-1425 | [WWW.SMALLTOWNPROPERTIES.COM](http://WWW.SMALLTOWNPROPERTIES.COM)

# THE HUMPHREYS 40

## PROPERTY PROFILE

### LOCATION:

- Silent Shade Road  
Belzoni, MS 39038
- Humphreys County
- 18± Miles S of Greenwood
- 30± Miles N of Yazoo City
- 40± Miles E of Greenville

### PROPERTY USE:

- Agriculture
- Investment
- Recreational

### COORDINATES:

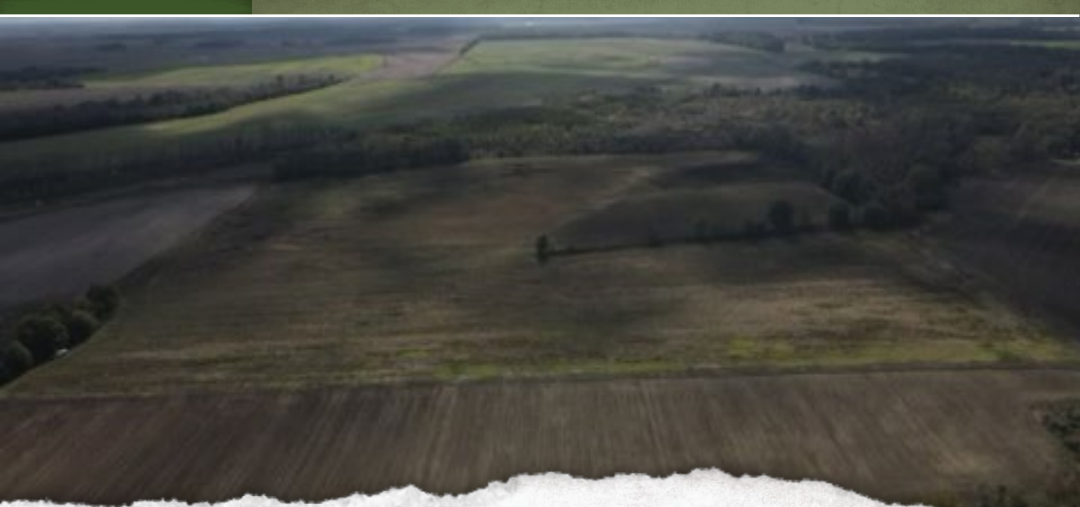
- 33.29682, -90.35291

### PROPERTY INFORMATION:

- 40± Acres
- Non-Irrigated Ag Ground
- Potential for CRP/WRP

### TAX INFORMATION:

- 2023 - \$555.00



**WILSON BRITT** | LAND SPECIALIST  
C: 662-299-2367 | wilson@smalltownproperties.com



**FORD TRUE** | LAND SPECIALIST  
C: 662-645-1119 | ford@smalltownproperties.com



# WELCOME TO THE HUMPHREYS 40

**INTRODUCING A MISSISSIPPI DELTA AGRICULTURAL TRACT: THE HUMPHREYS 40.** If you are looking for income production, this property should be considered. Currently the Humphreys County small farm is being rented for crops. The soils are suited for corn, cotton or soybeans. At this time, the farm is non-irrigated but could be improved with a well and land-forming.

The property sits close to the Yazoo River which is well known for waterfowl and whitetail deer. For the recreational investor this farm could be enrolled in CRP or WRP for additional income opportunities. If you are in the market for an income producing piece of land that has recreational potential, let's take a look at the Humphreys 40.

**To schedule a private showing, call Ford True or Wilson Britt today.**



**WILSON BRITT** | LAND SPECIALIST  
C: 662-299-2367 | [wilson@smalltownproperties.com](mailto:wilson@smalltownproperties.com)

**FORD TRUE** | LAND SPECIALIST  
C: 662-645-1119 | [ford@smalltownproperties.com](mailto:ford@smalltownproperties.com)

701 W. Sunflower Rd - Cleveland, MS 38732 | O: 662-846-1425 | [smalltownproperties.com](http://smalltownproperties.com) Information is believed to be accurate but not guaranteed.

**40± ACRES**

**HUMPHREYS COUNTY, MISSISSIPPI**



**WILSON BRITT** | LAND SPECIALIST  
C: 662-299-2367 | [wilson@smalltownproperties.com](mailto:wilson@smalltownproperties.com)

**FORD TRUE** | LAND SPECIALIST  
C: 662-645-1119 | [ford@smalltownproperties.com](mailto:ford@smalltownproperties.com)

701 W. Sunflower Rd - Cleveland, MS 38732 | O: 662-846-1425 | [smalltownproperties.com](http://smalltownproperties.com) Information is believed to be accurate but not guaranteed.

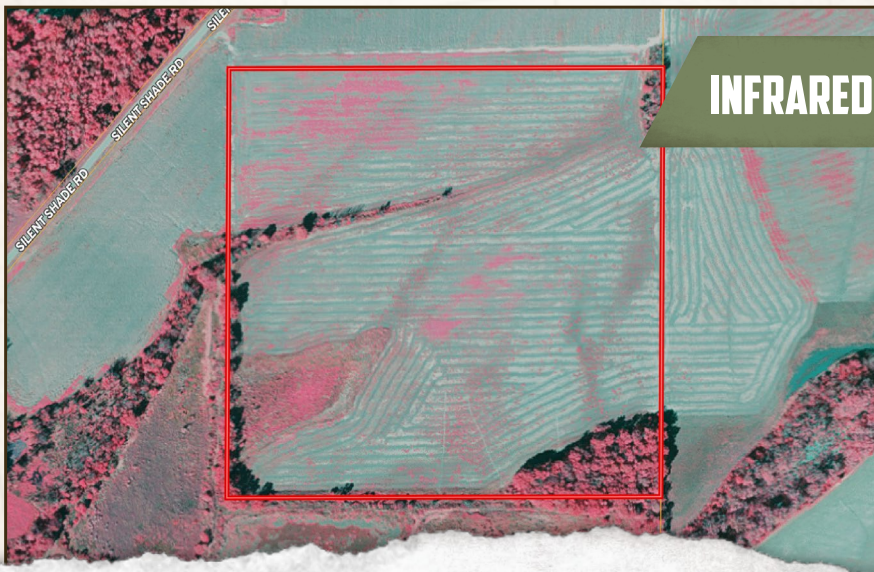


40± ACRES

HUMPHREYS COUNTY, MISSISSIPPI



land **id.** LINK



INFRARED MAP



**WILSON BRITT** | LAND SPECIALIST  
C: 662-299-2367 | wilson@smalltownproperties.com



**FORD TRUE** | LAND SPECIALIST  
C: 662-645-1119 | ford@smalltownproperties.com

40± ACRES

HUMPHREYS COUNTY, MISSISSIPPI



SOIL MAP

SOIL CODE	SOIL DESCRIPTION	ACRES	%	CPI	NCCPI	CAP
Db	Dowling clay, frequently flooded (alligator)	12.09	30.15	0	28	3e
Ac	Alligator clay, 0.5 to 2 percent slopes, occasionally flooded	10.01	24.96	0	55	3e
Fd	Forestdale silty clay loam, 0.5 to 2 percent slopes	9.69	24.16	0	65	3w
Fg	Forestdale silty clay loam, 0.5 to 2 percent slopes, shallow phase	3.47	8.65	0	65	3w
Fm	Forestdale silt loam, 0 to 2 percent slopes	2.96	7.38	0	65	3w
Dk	Dundee silty clay loam, 0 to 2 percent slopes, rarely flooded	0.68	1.7	0	85	2e
Dr	Dundee-Pearson silt loams (dundee, askew)	0.64	1.6	0	86	2w
Fh	Forestdale silty clay loam, 2 to 5 percent slopes	0.29	0.72	0	65	3w
Fa	Forestdale silty clay, 0 to 2 percent slopes	0.26	0.65	0	65	3w
TOTALS		40.09(	100%	-	52.01	2.97



**WILSON BRITT** | LAND SPECIALIST  
C: 662-299-2367 | wilson@smalltownproperties.com

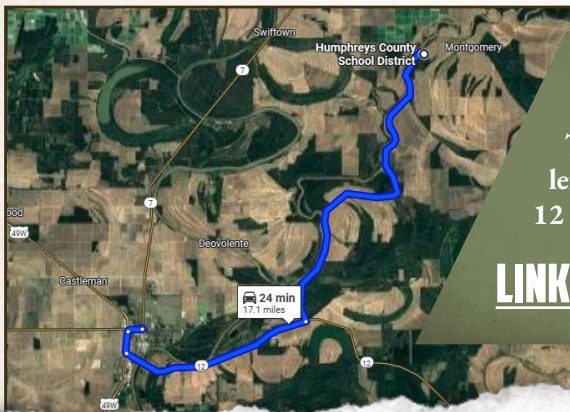
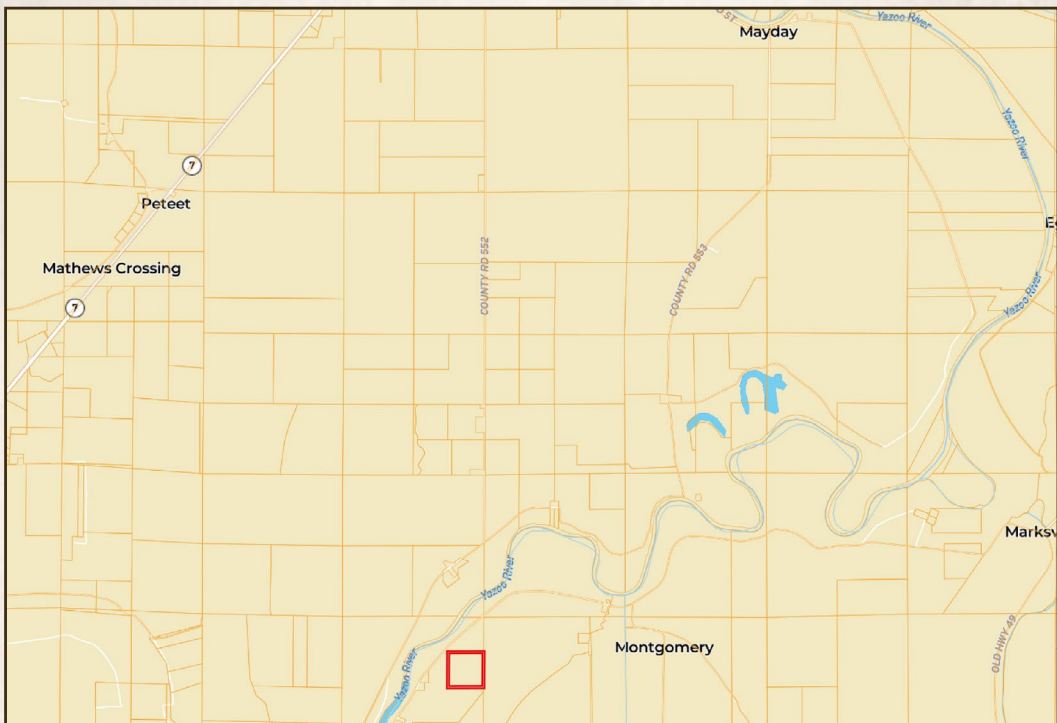


**FORD TRUE** | LAND SPECIALIST  
C: 662-645-1119 | ford@smalltownproperties.com



**40± ACRES**

**HUMPHREYS COUNTY, MISSISSIPPI**



Directions From the Intersection of  
Hwy 49 and Hwy 12 in Belzoni, MS:  
Travel 5 miles east on Hwy 12. Turn  
left onto Silent Shade Road and proceed  
12 miles to the property on the right.

**[LINK TO GOOGLE MAP DIRECTIONS](#)**



**WILSON BRITT** | LAND SPECIALIST  
C: 662-299-2367 | wilson@smalltownproperties.com



**FORD TRUE** | LAND SPECIALIST  
C: 662-645-1119 | ford@smalltownproperties.com