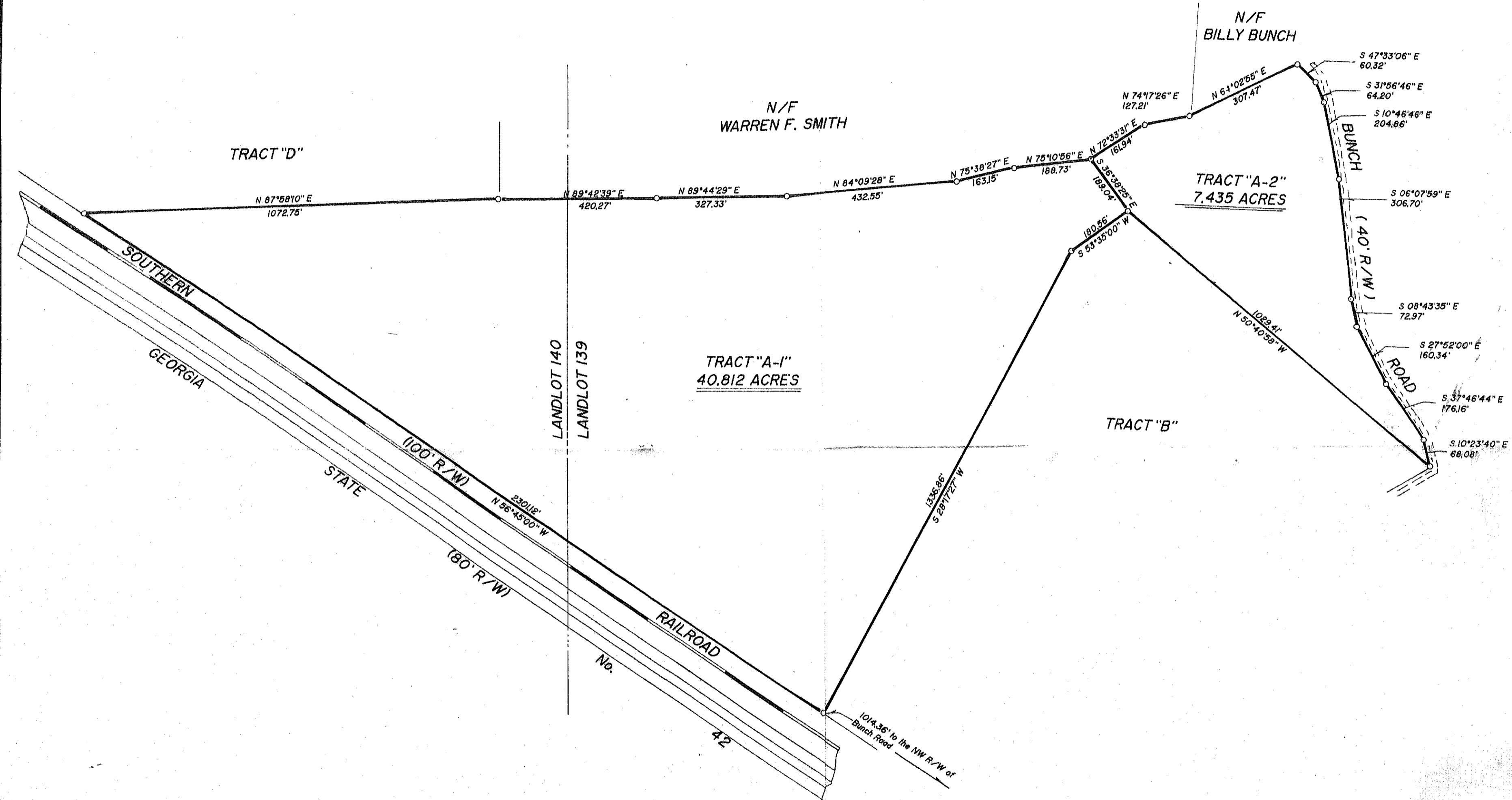


LEGEND

- IRON PIN FOUND OR SET
- CALCULATED POINT
- CONCRETE MONUMENT
- △ SURVEY TRAVERSE POINT
- ⊕ BENCHMARK ELEVATION
- ⊙ MANHOLE
- ⊕ FIRE HYDRANT
- ⊕ REBAR SET
- ⊕ WATER OR GAS VALVE
- ⊕ WATER OR GAS METER
- ⊕ DROP INLET
- ⊕ JUNCTION BOX
- ⊕ CATCH BASIN
- ⊕ HEADWALL
- ⊕ GUY WIRE
- ⊕ PROPERTY LINE
- ⊕ REBAR FOUND
- ⊕ CENTERLINE
- ⊕ BUILDING LINE
- ⊕ RIGHT-OF-WAY
- ⊕ REINFORCED CONCRETE PIPE
- ⊕ CORRUGATED METAL PIPE
- ⊕ DRAINAGE EASEMENT
- ⊕ SANITARY SEWER EASEMENT
- ⊕ EDGE OF PAVEMENT
- ⊕ PIPE FOUND 1/2" PIPE - SET
- ⊕ POWER LINE
- ⊕ SEWER LINE
- ⊕ WATER LINE
- ⊕ GAS LINE
- ⊕ TELEPHONE LINE
- ⊕ FENCE LINE
- ⊕ CREEK OR BRANCH
- ⊕ LANDLOT LINE
- ⊕ EASEMENT LINE
- ⊕ HEDGEROW
- ⊕ LINE NOT TO SCALE

NO FIELD SURVEY MADE ON THIS DATE BY THE UNDERSIGNED.



Buildable
 Non-Buildable
 Zoning Administrator
Shirley S. ...
 Date 4-3-2000

PLAT BOOK 14 PAGE 302
 Filed 4/5/00 at 9:15^a M
Rhonda J. Wanta
 Clerk, Butts Superior Court

COMPILED PLAT FOR
A. ALLAN BRITTAIN
 LOCATED IN LANDLOTS 139 & 140
 OF THE 1ST LAND DISTRICT
 BUTTS COUNTY, GEORGIA
 SCALE: 1" = 200' - FEB. 10, 2000

