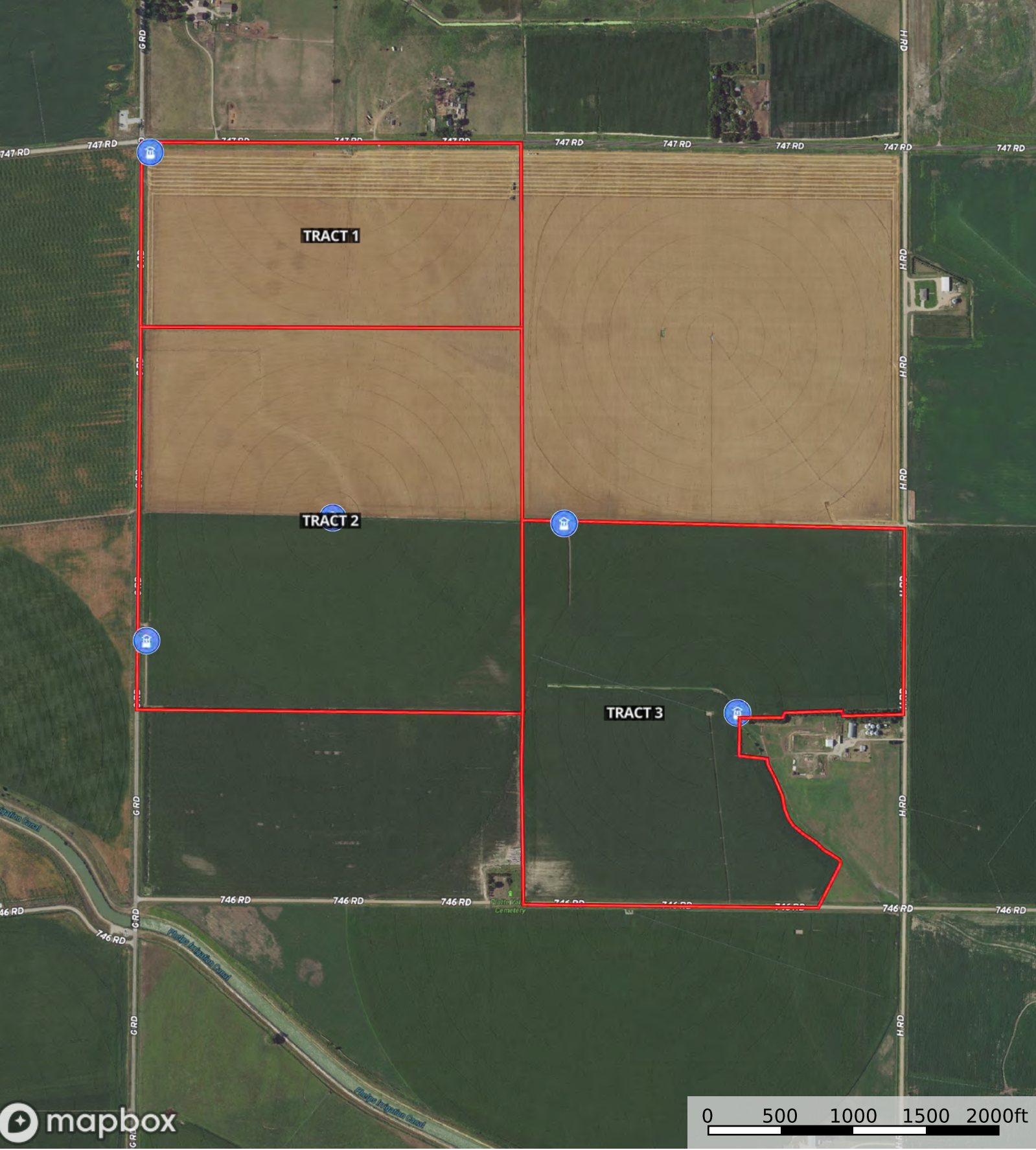








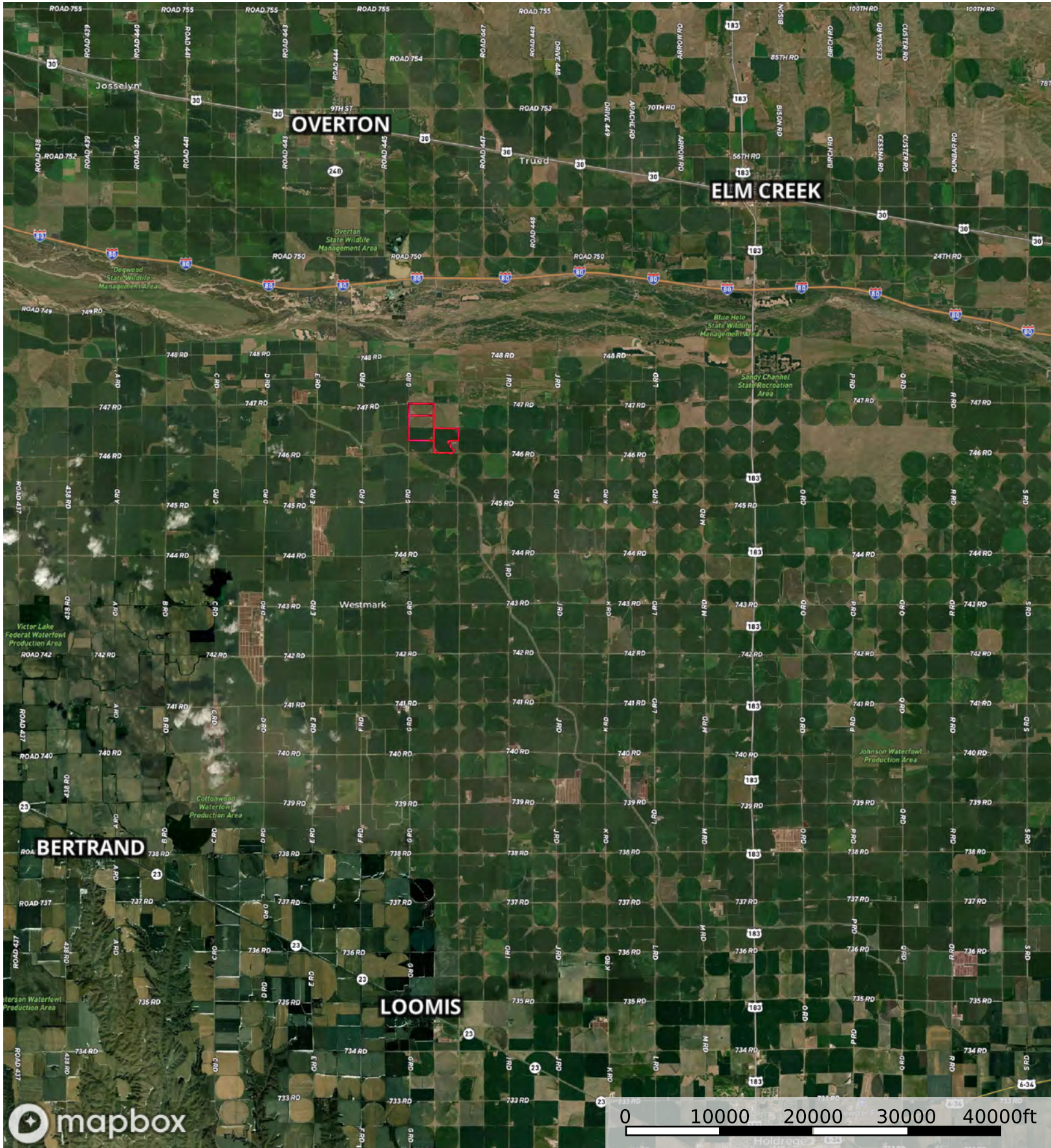


- Tract 3
- Tract 2
- Tract 1



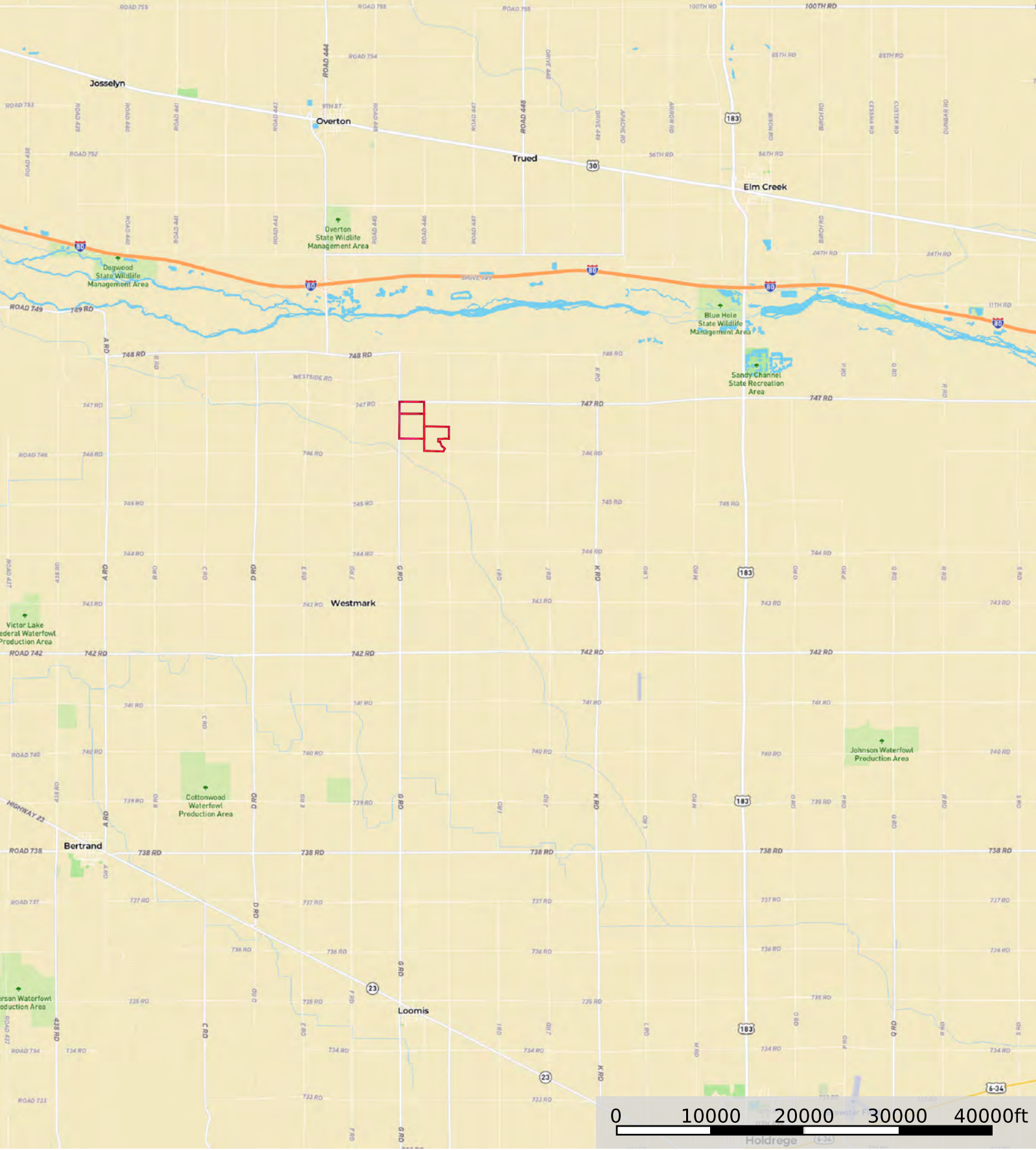
-  Well #: G-014285
-  Well #: G-054316
-  Well #: G-088293
-  Well #: G-014286
-  Well #: G-023363
-  Tract 3
-  Tract 2
-  Tract 1



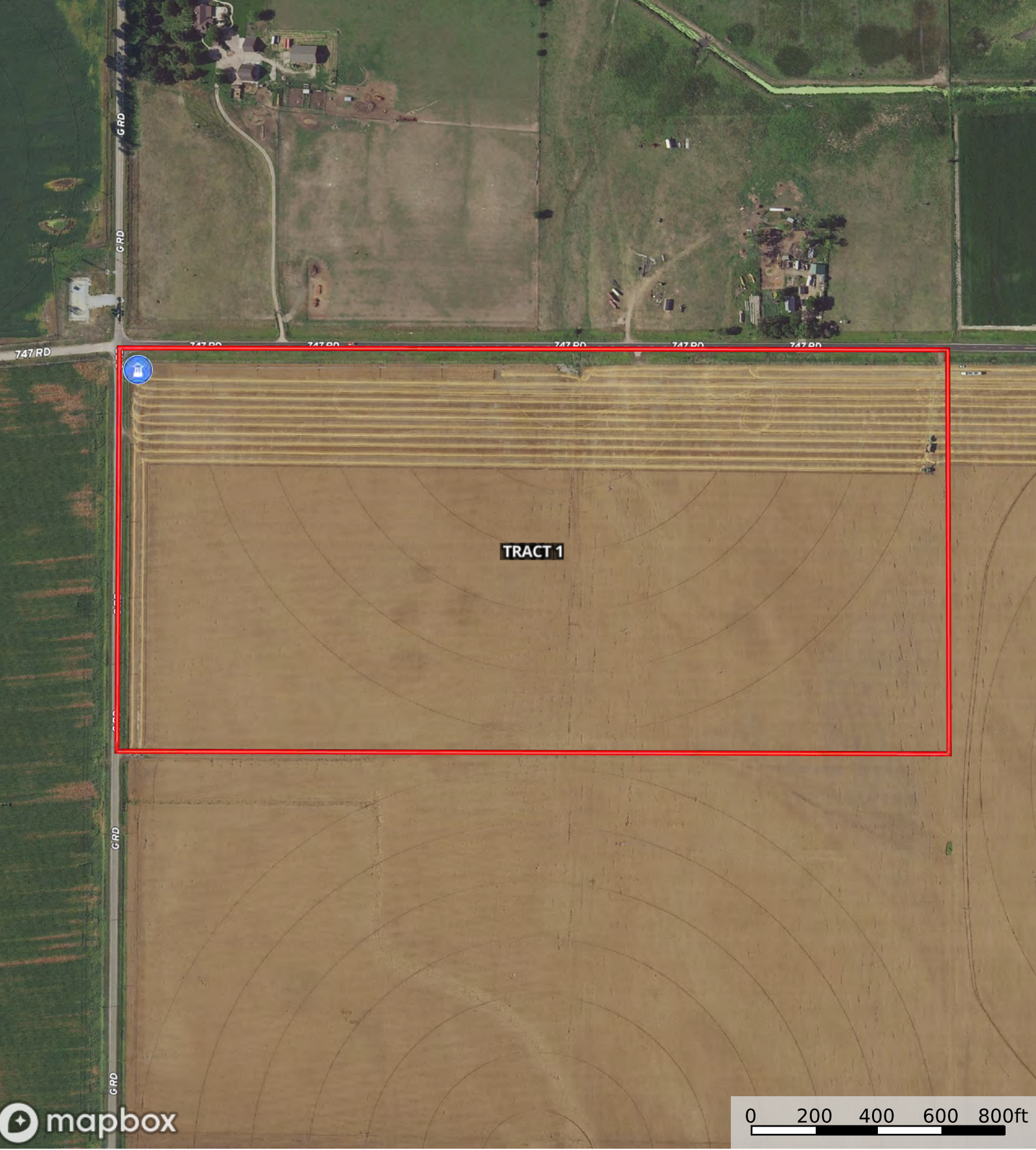
 Tract 3


 Tract 2


 Tract 1

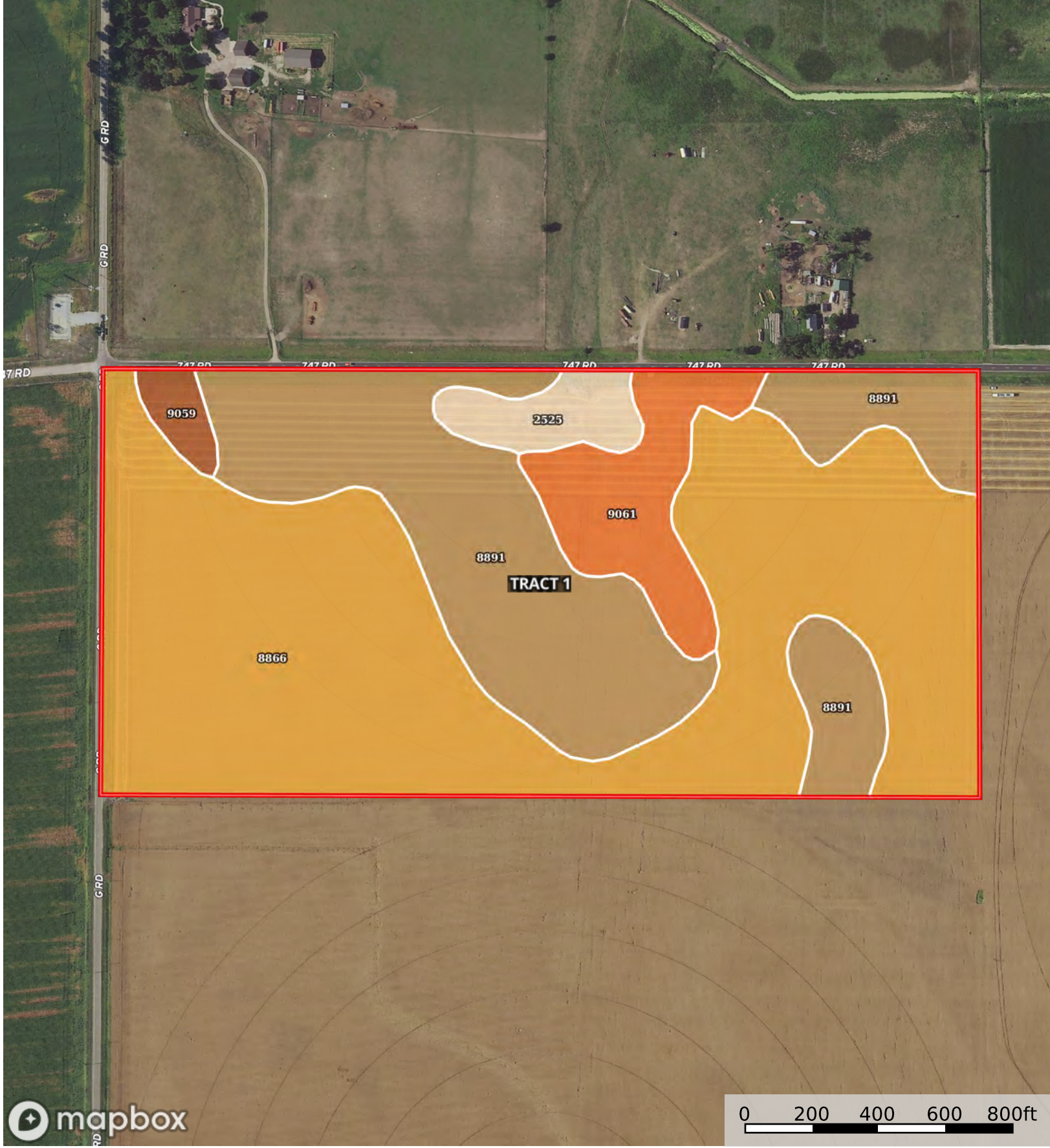


-  Tract 3
-  Tract 2
-  Tract 1



 Well #: G-023363

 Tract 1



Tract 1

SOIL CODE	SOIL DESCRIPTION	ACRES	%	CPI	NCCPI	CAP
8866	Hord silt loam, 0 to 1 percent slopes, warm	43.55	56.68	0	81	2c
8891	Kenesaw silt loam, terrace, 1 to 3 percent slopes	23.61	30.73	0	63	2e
9061	Kenesaw and Coly silt loams, hummocky	6.02	7.84	0	74	3e
2525	Coly, Kenesaw silt loams, 6 to 11 percent slopes	2.55	3.32	0	67	4e
9059	Kenesaw and Coly silt loams, hummocky, eroded	1.11	1.44	0	66	3e
TOTALS		76.84(*)	100%	-	74.25	2.16

(*) Total acres may differ in the second decimal compared to the sum of each acreage soil. This is due to a round error because we only show the acres of each soil with two decimal.

Capability Legend

Increased Limitations and Hazards

Decreased Adaptability and Freedom of Choice Users

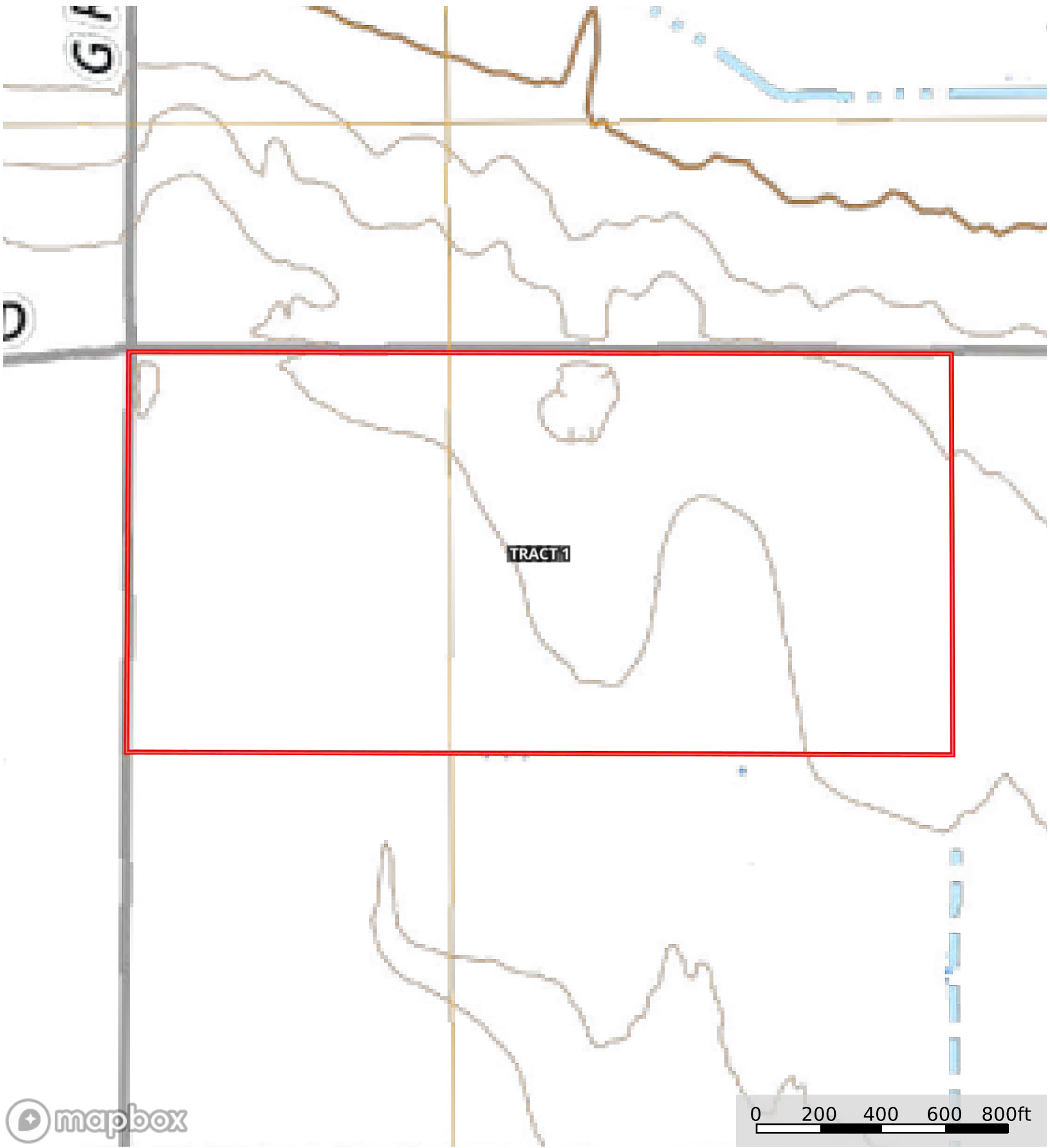
Land, Capability

	1	2	3	4	5	6	7	8
'Wild Life'	•	•	•	•	•	•	•	•
Forestry	•	•	•	•	•	•	•	
Limited	•	•	•	•	•	•	•	
Moderate	•	•	•	•	•	•		
Intense	•	•	•	•	•			
Limited	•	•	•	•				
Moderate	•	•	•					
Intense	•	•						
Very Intense	•							

Grazing Cultivation

(c) climatic limitations (e) susceptibility to erosion

(s) soil limitations within the rooting zone (w) excess of water



Tract 1



-  Well #: G-054316
-  Well #: G-088293
-  Tract 2



 Tract 2

SOIL CODE	SOIL DESCRIPTION	ACRES	%	CPI	NCCPI	CAP
8866	Hord silt loam, 0 to 1 percent slopes, warm	160	99.41	0	81	2c
8891	Kenesaw silt loam, terrace, 1 to 3 percent slopes	0.96	0.6	0	63	2e
TOTALS		160.96(*)	100%	-	80.9	2.0









(*) Total acres may differ in the second decimal compared to the sum of each acreage soil. This is due to a round error because we only show the acres of each soil with two decimal.

Capability Legend

Increased Limitations and Hazards

Decreased Adaptability and Freedom of Choice Users

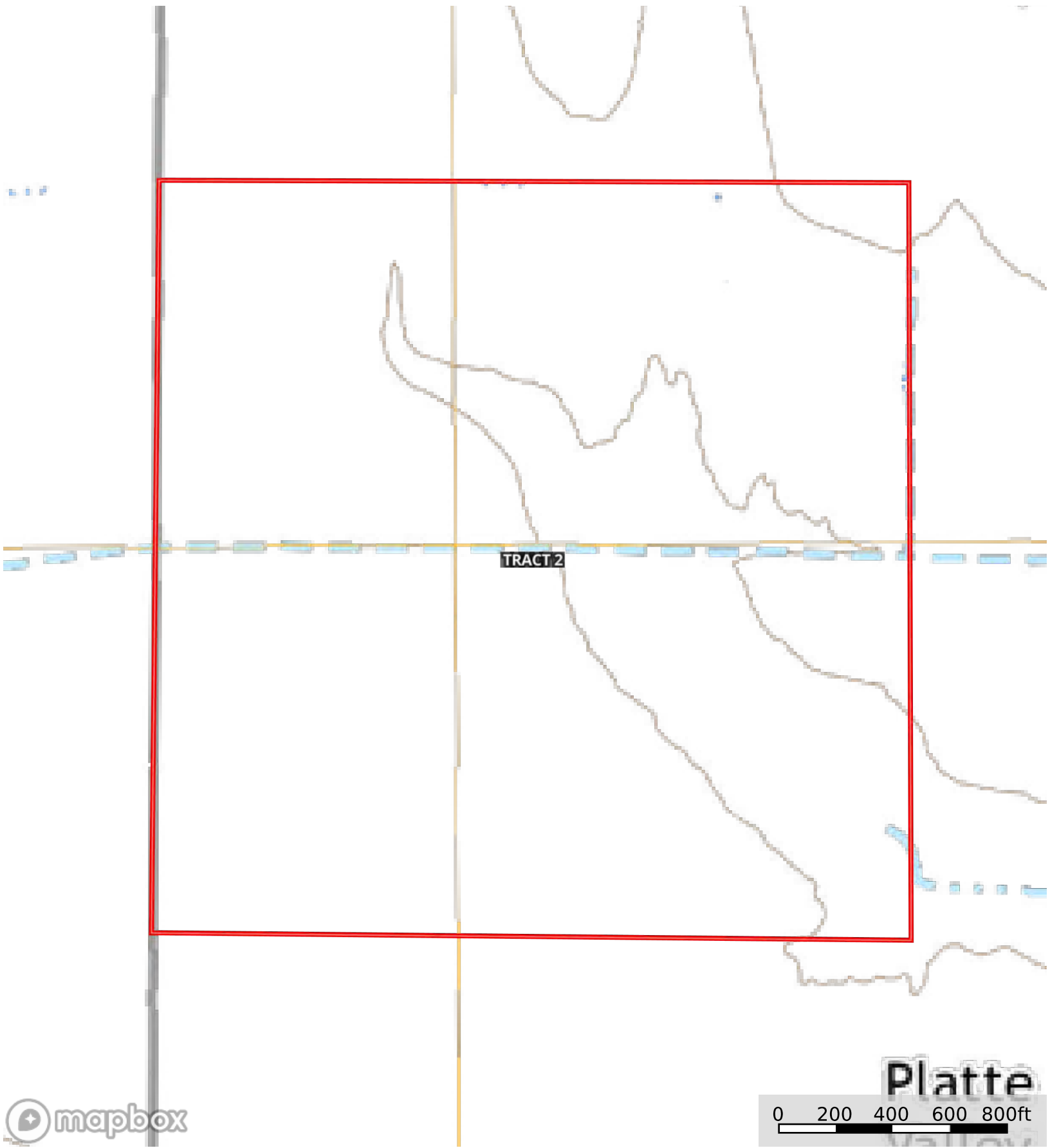
Land, Capability

								
	1	2	3	4	5	6	7	8
'Wild Life'	•	•	•	•	•	•	•	•
Forestry	•	•	•	•	•	•	•	
Limited	•	•	•	•	•	•	•	
Moderate	•	•	•	•	•	•		
Intense	•	•	•	•	•			
Limited	•	•	•	•				
Moderate	•	•	•					
Intense	•	•						
Very Intense	•							

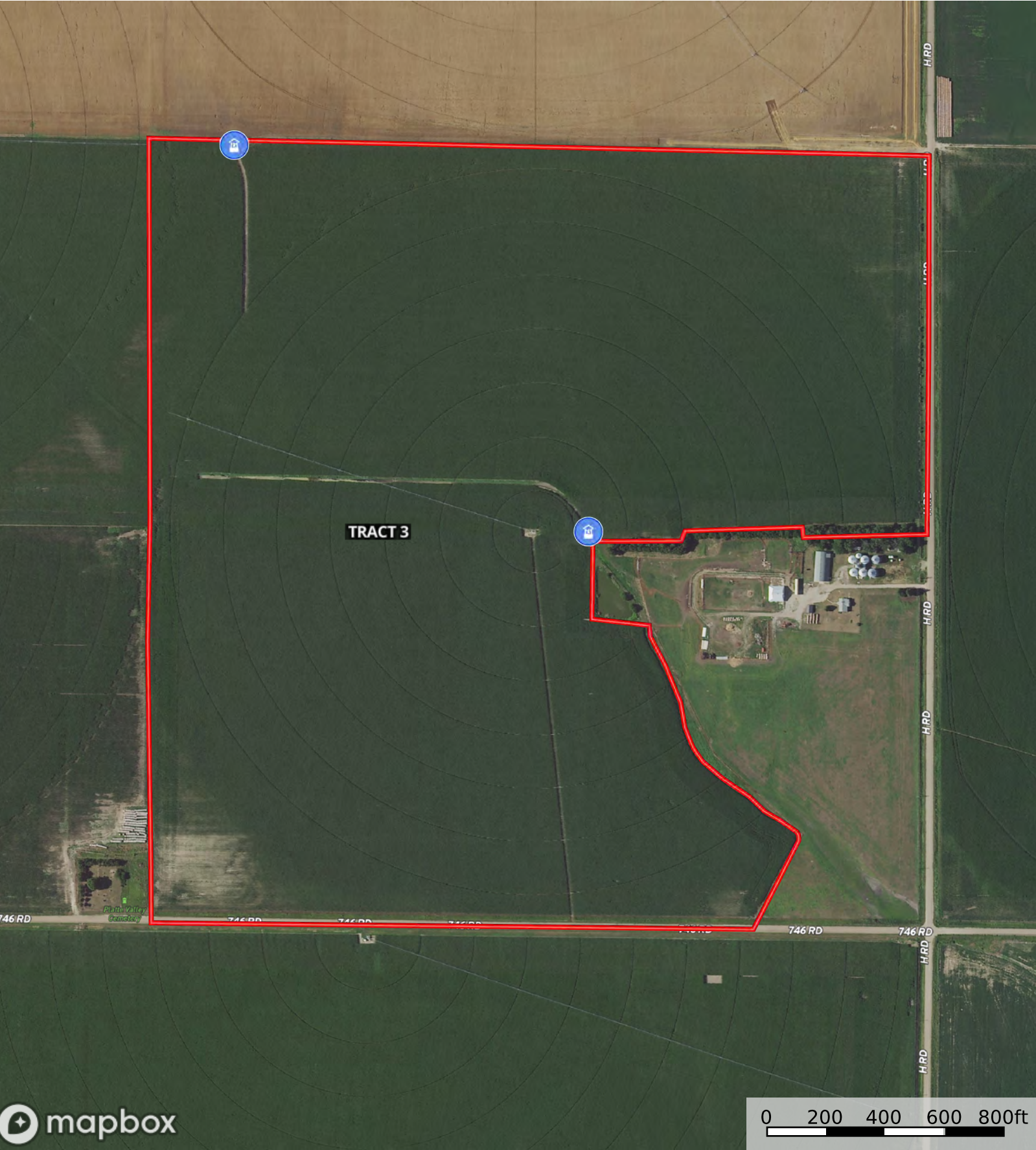
Grazing Cultivation

(c) climatic limitations (e) susceptibility to erosion

(s) soil limitations within the rooting zone (w) excess of water




Tract 2



 Well #: G-014285

 Well #: G-014286

 Tract 3



 Tract 3

Tract 3 135.22 ac

SOIL CODE	SOIL DESCRIPTION	ACRES	%	CPI	NCCPI	CAP
8866	Hord silt loam, 0 to 1 percent slopes, warm	108.13	79.97	0	81	2c
8891	Kenesaw silt loam, terrace, 1 to 3 percent slopes	14.16	10.47	0	63	2e
9059	Kenesaw and Coly silt loams, hummocky, eroded	8.66	6.4	0	66	3e
9061	Kenesaw and Coly silt loams, hummocky	4.27	3.16	0	74	3e
TOTALS		135.22(*)	100%	-	77.93	2.1

(*) Total acres may differ in the second decimal compared to the sum of each acreage soil. This is due to a round error because we only show the acres of each soil with two decimal.

Capability Legend

Increased Limitations and Hazards

Decreased Adaptability and Freedom of Choice Users

Land, Capability

	1	2	3	4	5	6	7	8
'Wild Life'	•	•	•	•	•	•	•	•
Forestry	•	•	•	•	•	•	•	
Limited	•	•	•	•	•	•	•	
Moderate	•	•	•	•	•	•		
Intense	•	•	•	•	•			
Limited	•	•	•	•				
Moderate	•	•	•					
Intense	•	•						
Very Intense	•							

Grazing Cultivation

(c) climatic limitations (e) susceptibility to erosion

(s) soil limitations within the rooting zone (w) excess of water