

SURVEY FOR

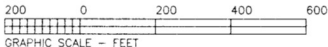
# KERRIS SHAFFER HARDMAN

PROPERTY IN LAND LOTS 987 & 1030  
18th DISTRICT, 3rd SECTION  
PAULDING COUNTY, GEORGIA

05 JAN 28 AM 10:55

TREV W. SHELTON  
CLERK  
PAULDING COUNTY COURTS

## AREA = 28.230 ACRES

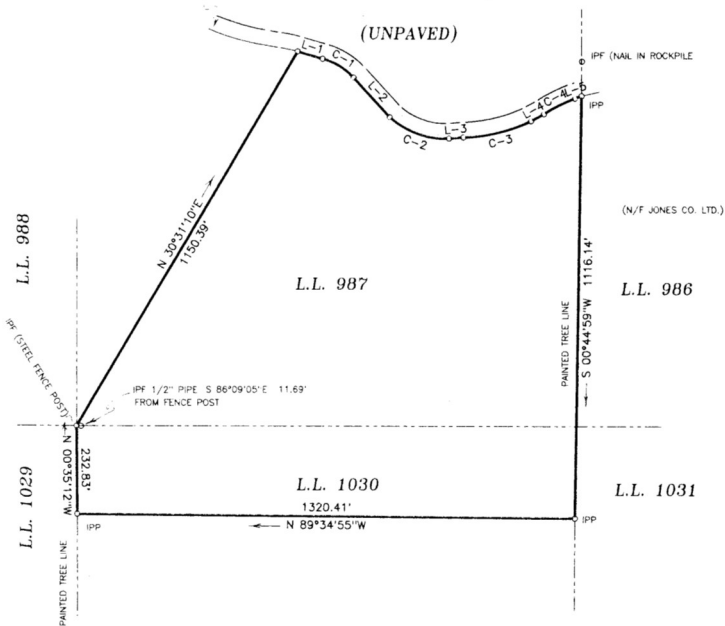


REFERENCE PLATS:  
 SURVEY FOR GEORGIA KRAFT CO., DATED 8/25/97,  
 PREPARED BY ROBERT W. FREVERT.  
 SURVEY FOR JONES CO., INC. DATED 3/20/2000,  
 PREPARED BY JON R. TRIPCONEY

## AREA = 28.230 ACRES

### SKYLINE DRIVE 40' R/W

(UNPAVED)



COURSE	BEARING	DISTANCE	CURVE	RADIUS	LENGTH	CHORD	CH.BEARING
L-1	S 73°33'20"E	69.21'	C-1	170.96'	96.42'	95.15'	S 58°46'07"E
L-2	S 42°41'13"E	142.22'	C-2	222.10'	171.77'	167.52'	S 70°18'44"E
L-3	N 85°16'45"E	38.51'	C-3	455.50'	185.71'	184.43'	N 76°29'12"E
L-4	N 61°07'17"E	39.00'	C-4	404.50'	92.55'	92.35'	N 63°21'33"E
L-5	N 70°29'59"E	17.91'					

#### NOTES

1. IPP INDICATES IRON PIN PLACED (1/2" RE-BAR)
2. IPF INDICATES IRON PIN FOUND. (1/2" RE-BAR UNLESS OTHERWISE SHOWN)
3. TRAVERSE PRECISION: 1" IN 22,000' (UNADJUSTED)
4. ANGULAR ERROR: 02"/SET-UP
5. EQUIPMENT USED: TOPCON GTS-303
6. TRAVERSE ADJUSTMENT: LEAST SQUARES
7. THIS PLAT HAS BEEN CALCULATED FOR CLOSURE AND HAS BEEN FOUND TO BE ACCURATE WITHIN 1" IN 346,000'



### HEAD, HATCH, & ASSOCIATES LAND SURVEYORS

P.O. BOX 501  
ROCKMART, GEORGIA 30153  
770-684-0724

FILE: 1616KH

Biz 44 09/19/08