



## 0.19+/- ACRE RESIDENTIAL LOT IN RANKIN COUNTY, MS



\$5,000

### Nelda Drive, Brandon, MS 39042

An undeveloped residential lot is available right off Nelda Drive in the subdivision of Shady Lake in Rankin County. Just far enough away to give you that rural feel while simultaneously being within Brandon's city limits. Contact your realtor today to schedule a showing!

**Directions from Hwy 18 E:** Head southeast on MS-18 E towards Sanctuary Dr. Turn Right onto Sanctuary Drive; Turn left onto Old Lake Rd. Take Holiday Road and Hilda Joy Drive to Nelda Drive. The property will be on your right. [GOOGLE MAP LINK](#)



LandReport  
2011-2022  
AMERICA'S  
BEST  
BROKERAGES

*Call me today!*

**CLAY SIMMONS**, REALTOR®  
Clay@TomSmithHomes.com  
601.898.2772 office | 601.672.6864 cell



Expect More. Get More.

**TomSmithLandandHomes.com**

Information is believed to be accurate but not guaranteed.

# AERIAL MAP



## INTERACTIVE AERIAL



*Call me today!*

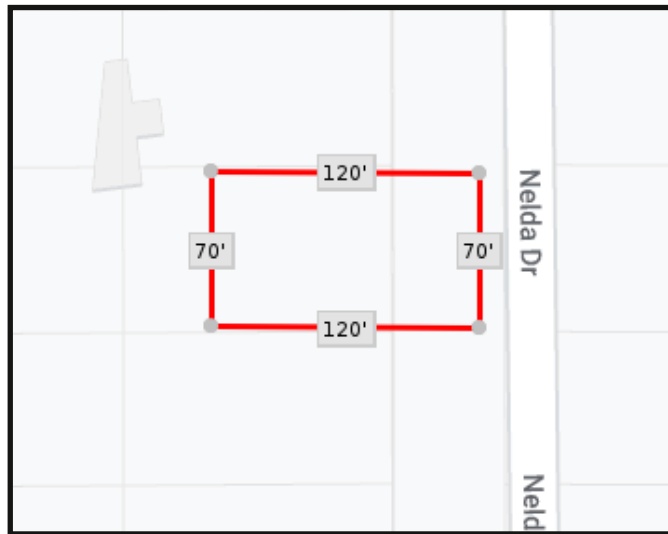
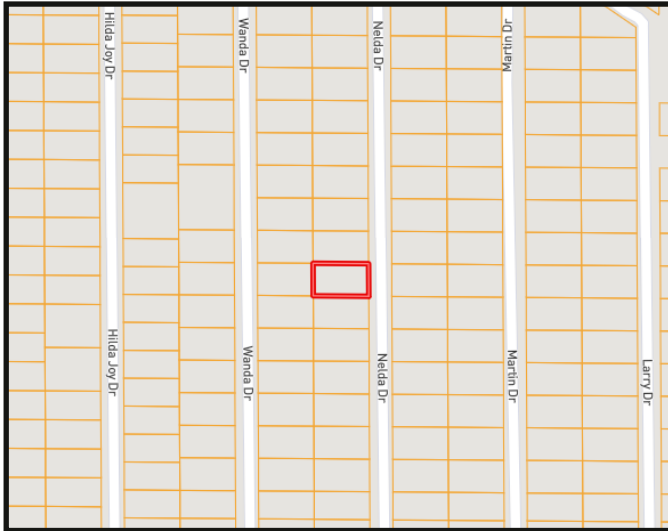
**CLAY SIMMONS**, REALTOR®  
Clay@TomSmithHomes.com  
601.898.2772 office | 601.672.6864 cell



**TomSmithLandandHomes.com**

Information is believed to be accurate but not guaranteed.

# OWNERSHIP MAP



*Call me today!*

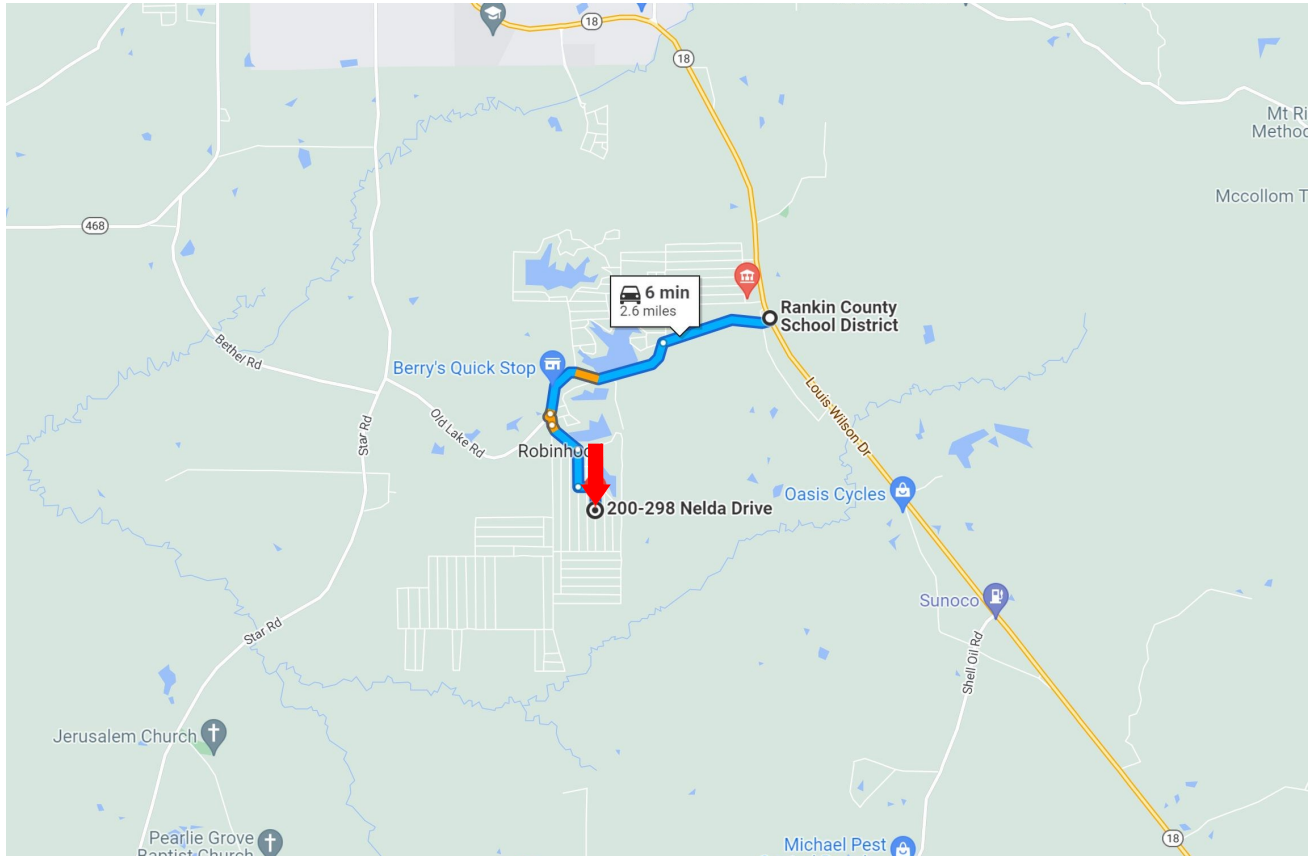
**CLAY SIMMONS**, REALTOR®  
Clay@TomSmithHomes.com  
601.898.2772 office | 601.672.6864 cell



**TomSmithLandandHomes.com**

Information is believed to be accurate but not guaranteed.

# DIRECTIONAL MAP



**Directions from Hwy 18 E:** Head southeast on MS-18 E towards Sanctuary Dr. Turn Right onto Sanctuary Drive. Turn left onto Old Lake Rd. Take Holiday Road and Hilda Joy Drive to Nelda Drive. The property will be on your right. [GOOGLE MAP LINK](#)



*Call me today!*

**CLAY SIMMONS**, REALTOR®  
Clay@TomSmithHomes.com  
601.898.2772 **office** | 601.672.6864 **cell**



**TomSmithLandandHomes.com**

Information is believed to be accurate but not guaranteed.