



## Watson Road—Sumter Tract

Sumter County, AL

+/- 353.7 Acres

Timberland / Hunting / Recreation

\$1,202,648.00

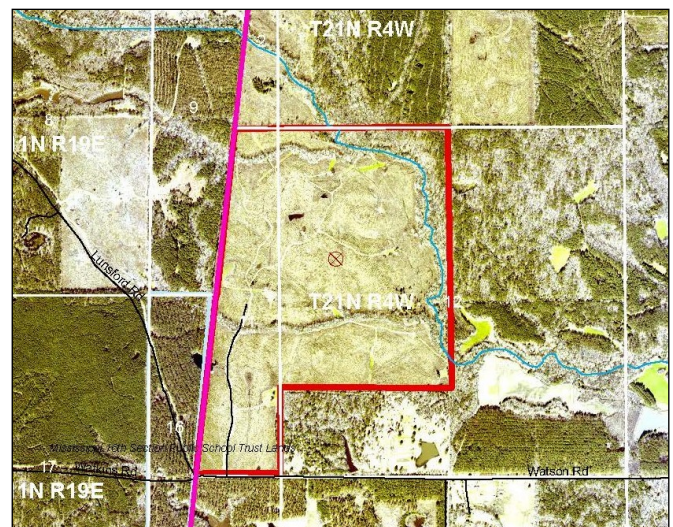
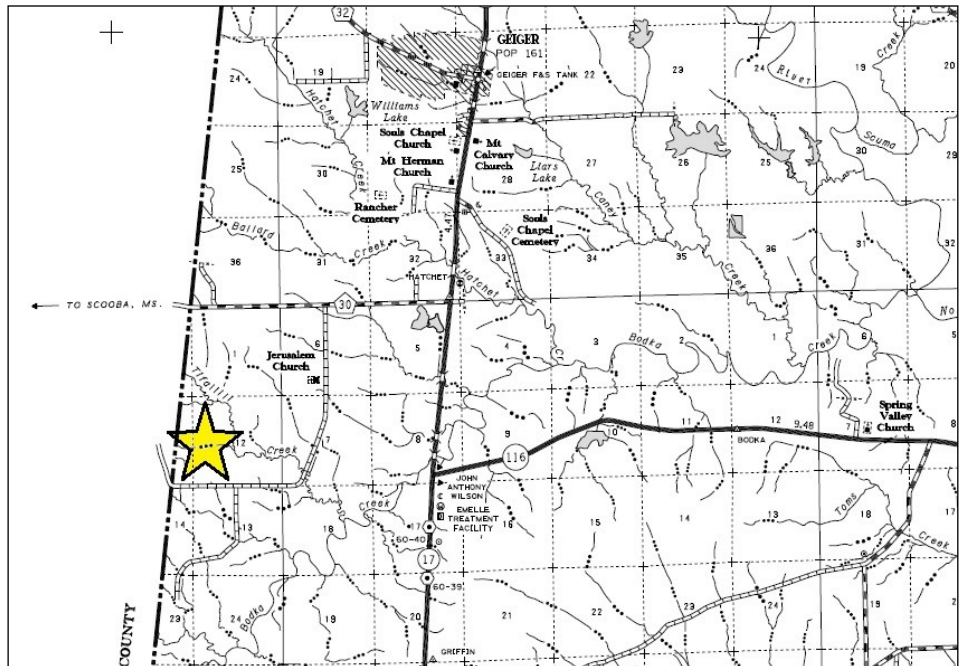
**P. O. Box 600**  
**Gordo, AL 35466**  
**205-364-7145**  
 Dale Lancaster, Broker

Sections 11, 12 Township 21 North, Range 4 West

32.8097 -88.3564

For more info: [www.midsouthforestry.com](http://www.midsouthforestry.com)

Explore this potential timberland paradise in Sumter County, Alabama! Spanning 353.7 +/- acres, this vast property boasts prime footage along Watson Road and Tifallili Creek. Ideal for wildlife enthusiasts and recreational pursuits, it offers unparalleled opportunities for hunting and outdoor adventures. With abundant timber resources, this land is perfect for investment or private retreat development. Discover rolling hills, premerchantable pine plantations and mature hardwoods along Tifallili Creek waiting to be explored. Don't miss out on owning your slice of Alabama's natural beauty - whether for leisure or long-term gain, this timberland is a rare find in a desirable wildlife location.



All information furnished is assumed to be accurate and correct. However, neither the property owner nor Midsouth Forestry Services warrant the accuracy of information furnished. Prospective buyers should satisfy themselves as to the accuracy of this information. No representation or warranties are expressed or implied as to the property, its condition, boundaries, access, acres, zoning, condition of title or fair market value.

Rev. 022425