



MASTERPIECE GROVE

Masterpiece Road, Lake Wales, FL 33898

Richard Dempsey, ALC, CIPS
863.581.1903
richard@saundersrealestate.com





PROPERTY OVERVIEW

Sale Price **\$725,000**

OFFERING SUMMARY

Acreage:	28.6 Acres
Price / Acre:	\$25,350
City:	Lake Wales
County:	Polk
Property Type:	Citrus, Land Investment, Residential Development

PROPERTY OVERVIEW

Zoned RS - Residential Suburban, this parcel presents an exceptional opportunity for residential development. The strategic location offers convenient access to local amenities and attractions, making it an attractive prospect for prospective investors. Embrace the possibilities of creating a residential community within this growing area.

SPECIFICATIONS & FEATURES

[VIEW PROPERTY WEBSITE](#)

SPECIFICATIONS & FEATURES

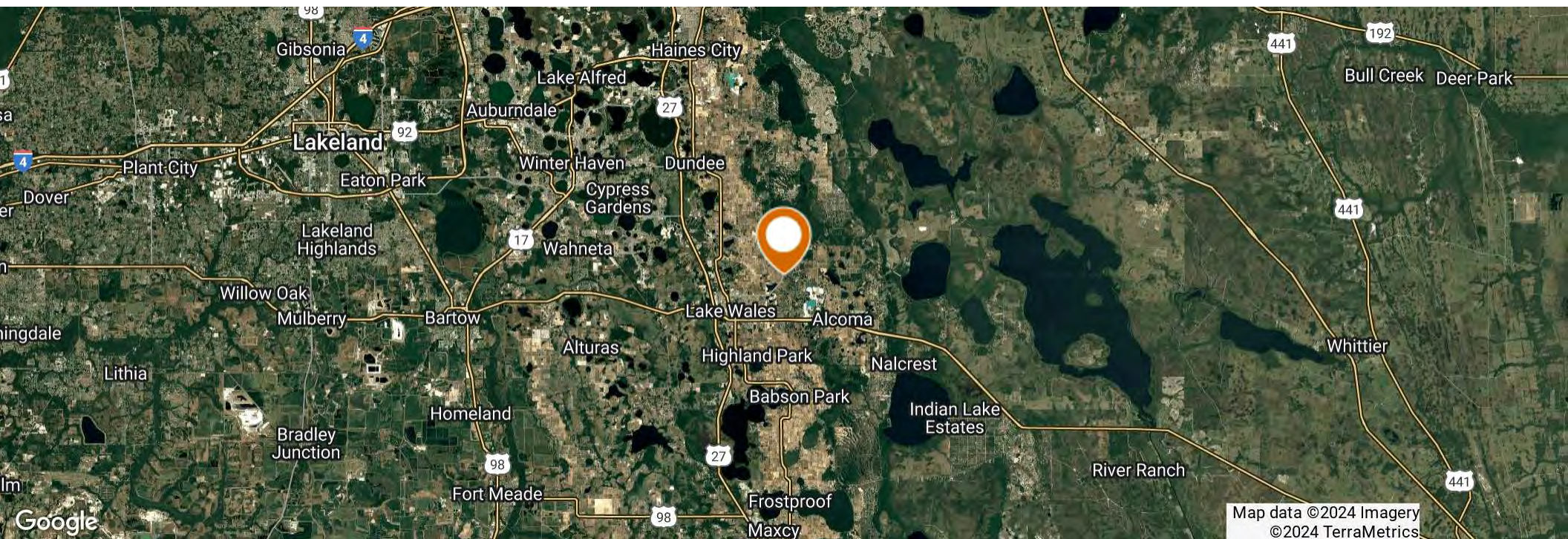
Land Types:	• Citrus
	• Land Investment
	• Residential Development
Uplands / Wetlands:	27± acres Uplands / 1± acre Wetlands
Soil Types:	Taveres Fine Sand
Taxes & Tax Year:	28-29-29-937600-020030 2024 \$332.95
	28-29-29-937600-020051 2024 \$51.94
	28-29-29-937600-020120 2024 \$57.38
	Total \$442.27
Zoning / FLU:	RS
Water Source & Utilities:	2 - 6" wells
Road Frontage:	780 ft
Nearest Point of Interest:	View of Bok Tower to the West
Current Use:	Currently citrus
Land Cover:	Citrus grove

LOCATION

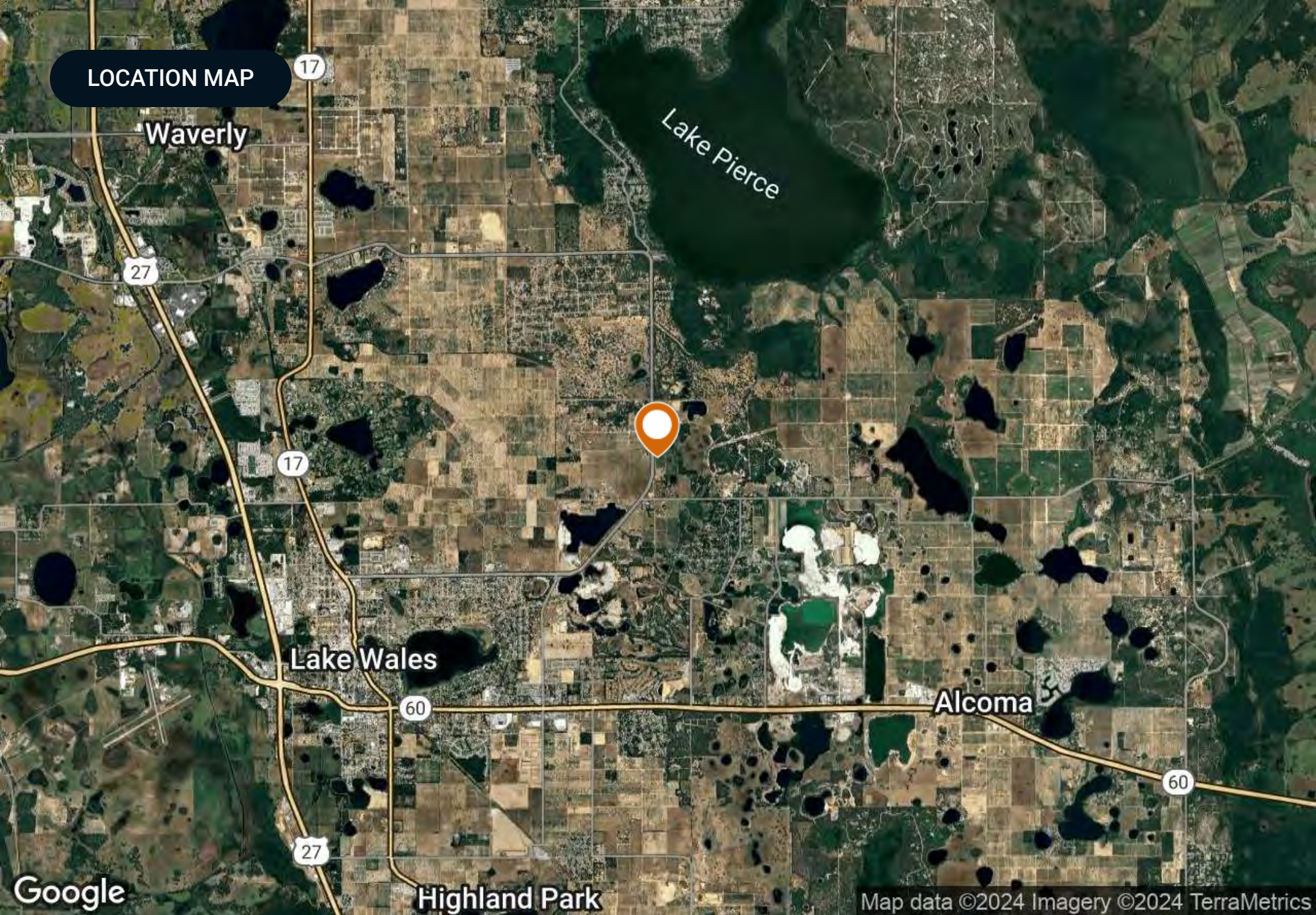


LOCATION & DRIVING DIRECTIONS

Parcel:	28-29-29-937600-020030
	28-29-29-937600-020051
	28-29-29-937600-020120
GPS:	27.9309979, -81.5365213
Driving Directions:	From Lake Wales go east on Burns Avenue property is 1/2 mile north of Mammoth Grove Road

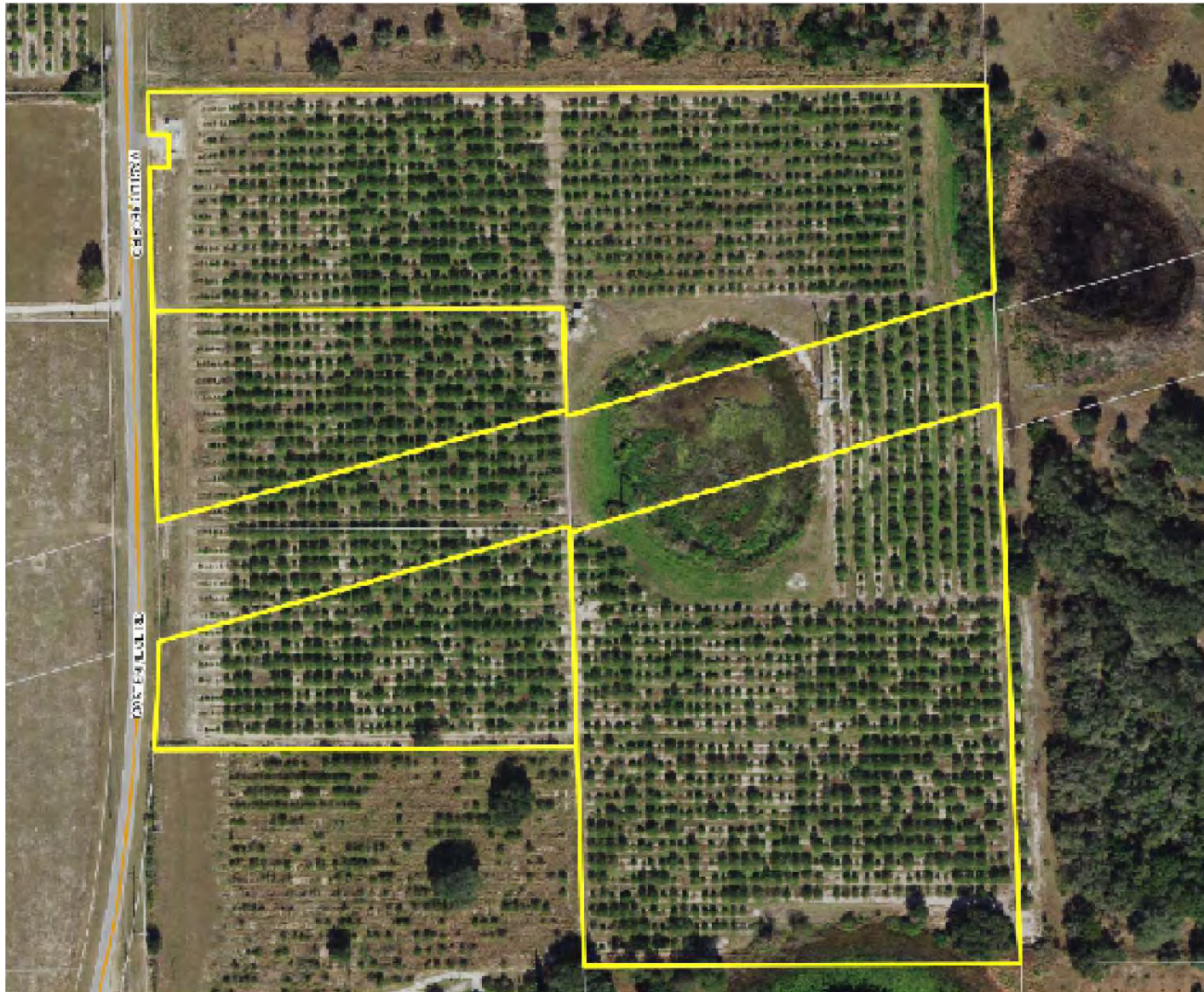


LOCATION MAP



Map data ©2024 Imagery ©2024 TerraMetrics

BOUNDARY MAP



ADDITIONAL PHOTOS



LAKE WALES POLK COUNTY

Founded	1917
Population	16,774 (2023)
Area	14
Website	lakewalesfl.gov
Major Employers	NuCor Steel AdventHealth Florida's Natural Growers Peterson Industries

The city of Lake Wales, Florida was officially incorporated in April 1917. The city developed quickly when in 1925, the Atlantic Coast Line Railroad constructed a new railway connecting Haines City to Everglades City. With the development of this line, a new depot was opened in Lake Wales.

Located west of Lake Kissimmee and east of Tampa, the city of Lake Wales is part of the Lakeland–Winter Haven Metropolitan Statistical Area of Central Florida. The city is geographically located near the center of Florida's peninsula, right on the Lake Wales Ridge upland area. Currently, 9 million people live within 100 miles of the city.

The city of Lake Wales serves as an excellent location for commercial real estate. Featuring tenants like Kegel, Merlin Entertainment, TruGreen, and AT&T, the Lake Wales Commerce and Technology Park is on the busy U.S. Route 27 just south of the city. Bok Tower Gardens is a nearby national historic landmark featuring a 205 foot carillon tower atop one of Florida's highest points.



ONE OF AMERICA'S BEST BROKERAGES



One of America's
Best Brokerages



APEX 2022 Top
National Producer



Most Influential
Business Leaders



Largest Commercial
Real Estate Brokers
in Tampa Bay



Ranked 210 on Inc.
5000 Regional List



For more information visit www.saundersrealestate.com

HEADQUARTERS

1723 Bartow Rd
Lakeland, FL 33801
863.648.1528

ORLANDO

605 E Robinson Street,
Suite 410
Orlando, Florida 32801
386.438.5896

NORTH FLORIDA

356 NW Lake City Avenue
Lake City, Florida 32055
352.364.0070

GEORGIA

203 E Monroe Street
Thomasville, Georgia
31792
229.299.8600

ARKANSAS

112 W Center St, Suite 501
Fayetteville, Arkansas
72701
479.582.4113

