

LAND OFFERING

15 ± Acre Building Site



15 ± Acre Building Site | Section 29 Westfield Township | Dodge County, MN

Beautiful building site on 15 ± acre tree covered parcel with plenty of wildlife hunting/recreational acres. This acreage includes shoreline along the Cedar River. Seller will pay for and assist buyer with obtaining the building and septic permits. Don't miss this opportunity to build the country home of your dreams with plenty of area to hunt and play!

**1STOP
REALTY** 
INC

FARMLAND PROFESSIONALS

Call us for more information or to schedule a showing:

 507-634-7033

Property Summary

Property Address: TBD 750th Street, Blooming Prairie, MN

Directions: From Blooming Prairie, take State Hwy 30 east 1.8 miles. Turn right on 115th Avenue 0.5 miles. Turn left on 750th Street 0.3 miles, property is on the left. Or, from Hayfield, take State Hwy 56 south 2 miles to 750th Street. Turn right and go 7.5 miles, property is on the right.

PID: Part of 18.029.1200

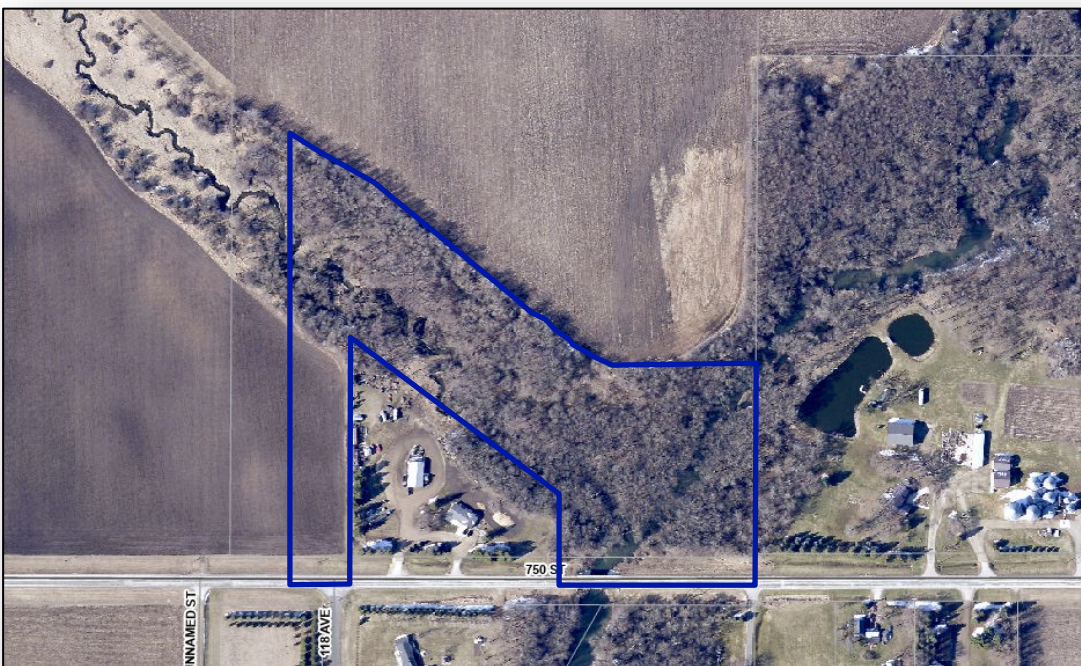
Legal Description: Sect-29 Twp-105 North Range-018 - 15± ACRES
Part of the SE 1/4 of the SE 1/4 and the S1/2 of the NW 1/4 of the SE 1/4 of Section 29, Township 105 North, Range 18 West, Dodge County, MN. (TBD by final survey)

Gross Acres: 15± Acres **Wooded Acres:** 13± Acres

Property Tax: (Final amount TBD after split of 18.029.1200)

Building Site Information: The seller will assist and pay for the building and septic permits. These permits are to be obtained prior to the survey being completed.

Offered at: \$250,000



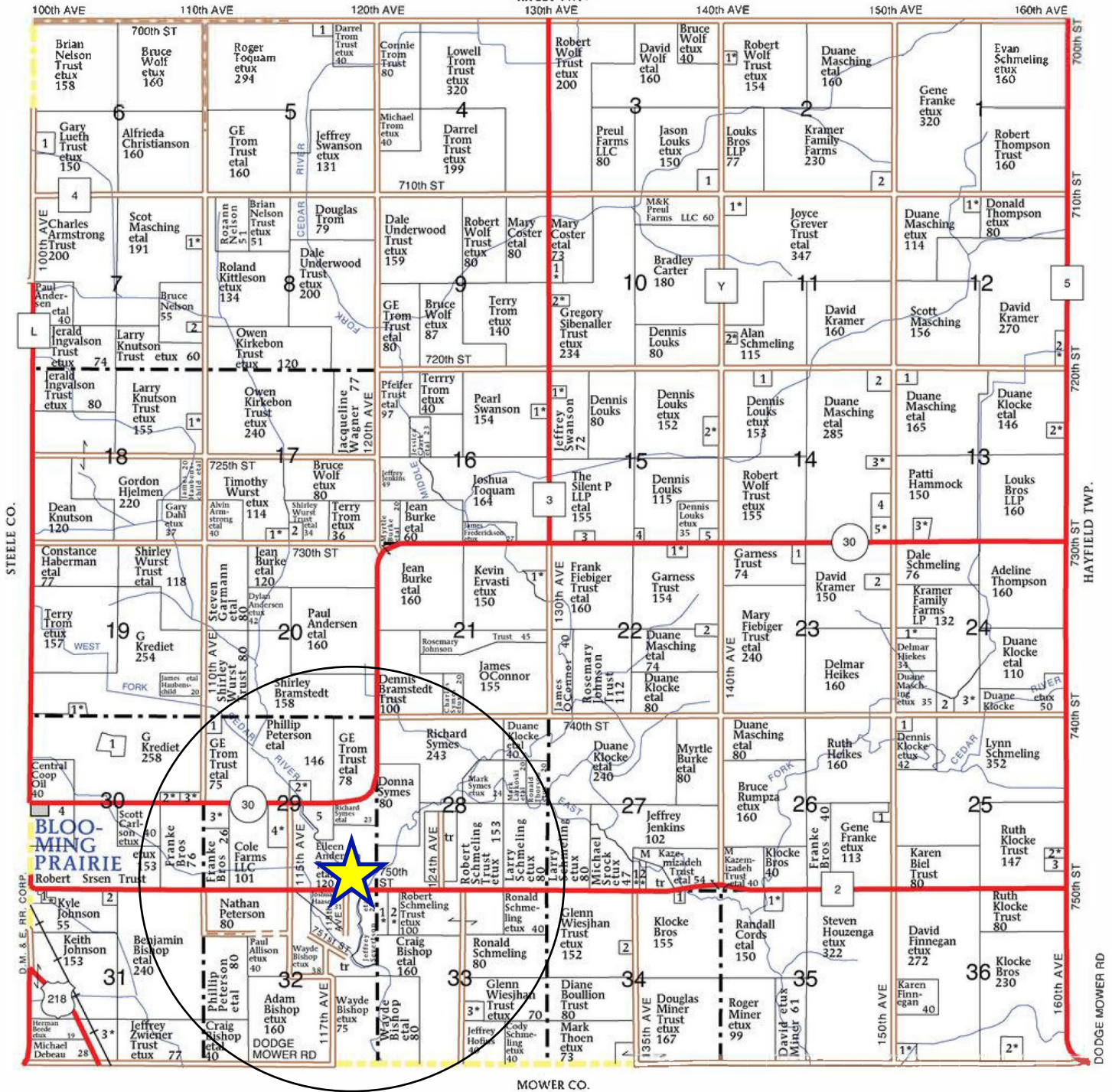
T-105-N

WESTFIELD PLAT

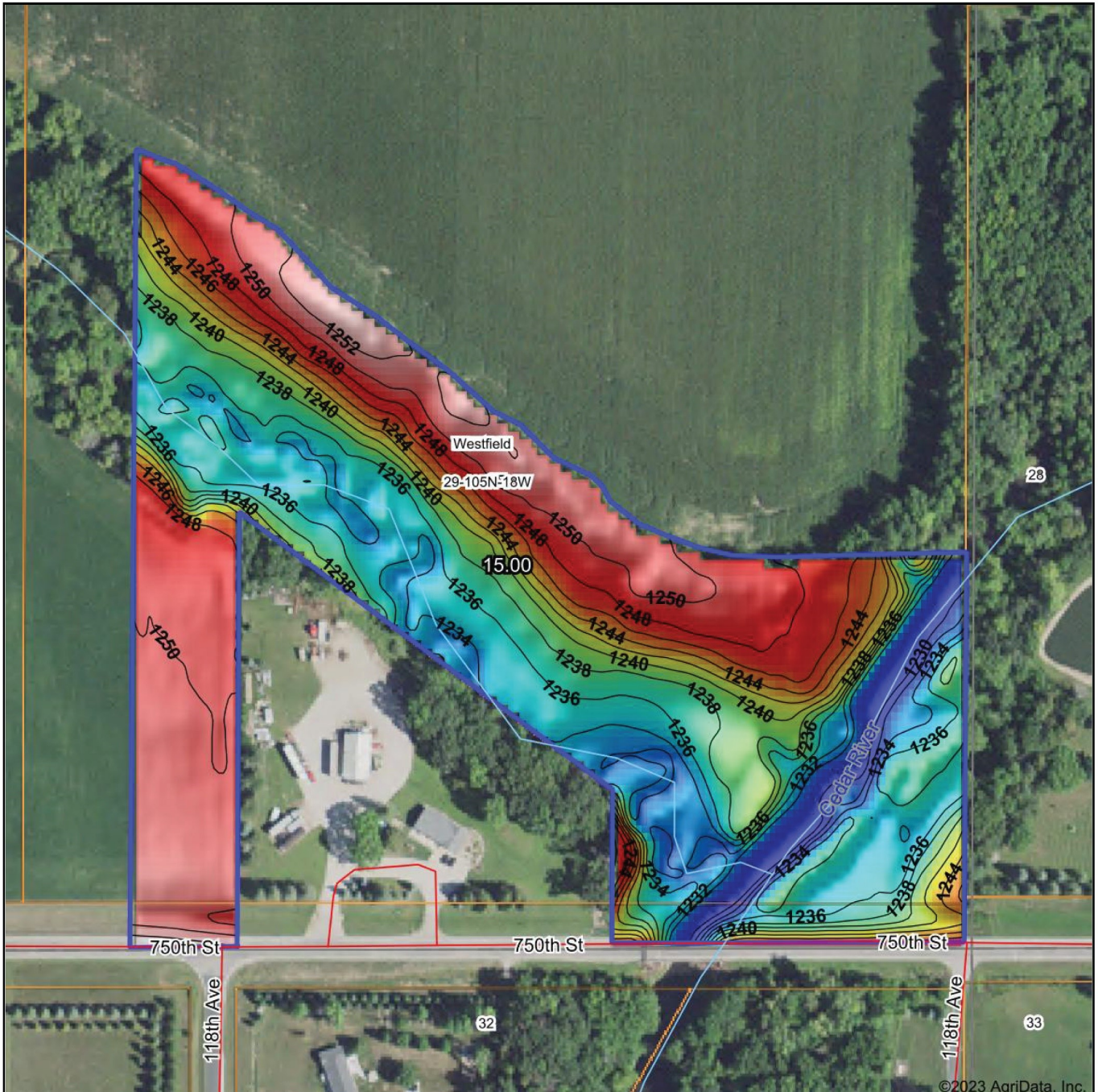
R-18-W

(Landowners)

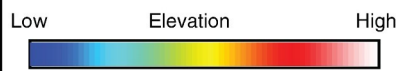
RIPLEY TWP.



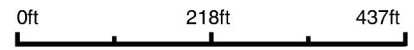




©2023 AgriData, Inc.



Source: USGS 3 meter dem
Interval(ft): 2
Min: 1,228.9
Max: 1,254.7
Range: 25.8
Average: 1,241.4
Standard Deviation: 7.09 ft



29-105N-18W
Dodge County
Minnesota

map center: 43° 51' 51.33, -93° 0' 27.68

1STOP REALTY
FARMLAND PROFESSIONALS

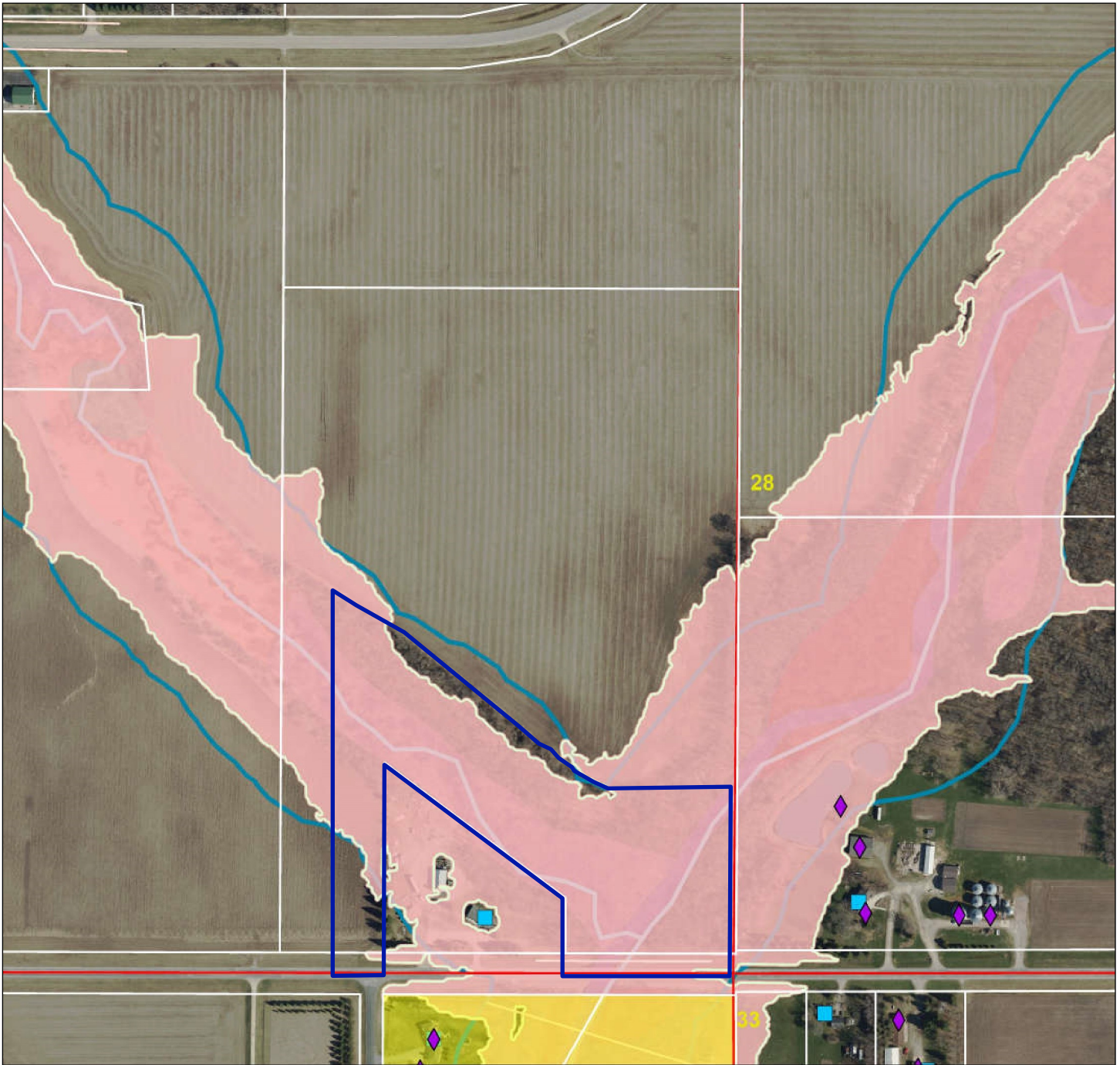
Maps Provided By:

surety
CUSTOMIZED ONLINE MAPPING

© AgriData, Inc. 2023 www.AgriDataInc.com

15 ± Acre LAND OFFERING

Dodge County Flood Plain Map



This map is neither a legally recorded map nor a survey and is not intended to be used as one. This is a compilation of records, information and data located in various city, county, state and federal offices and other sources regarding the area shown, and is to be used for reference purposes only. Created From Goodhue Online Mapping Site. Sources: Dodge County, MN

0 250 500 1,000 Feet



WHY YOU SHOULD USE A REALTOR® FOR YOUR LAND REAL ESTATE NEEDS

All REALTORS® are real estate agents but not all real estate agents are REALTORS®. A real estate agent is licensed by the state and can conduct real estate transactions. REALTORS® have gone a step further and joined the **National Association of REALTORS® (NAR)**, which holds them to a higher standard of ethics than a real estate agent must abide by. All REALTORS® are required to adhere to an extensive Code of Ethics, so consumers may feel at ease knowing that they are working with agents who are thoroughly vetted and have sworn to uphold certain professional standards.

There is also an additional level of professional representation. Those are members that belong to the **REALTORS® Land Institute (RLI)**, they share a nuanced understanding of the land real estate industry and specialize in brokerage services related to all types of land including farms, recreational land, timberland, transitional land, site selection and assemblage of land parcels, appraisals and land valuation, auctions, and land management.

Of these members, some have put in the extra time and education into earning the highest RLI land designation, the **Accredited Land Consultant (ALC)**. ALCs are more than just real estate people, they are LAND PEOPLE. This designation is only given to land REALTORS® that are proven to be the most educated, experienced, and trustworthy land sales professionals in the industry. All ALCs have completed a rigorous education program, are certified to have a depth of experience in the industry and are recognized as the most elite land REALTORS®.

Using an ALC means having the most educated land professional to close the deal. They are able to leverage their in-depth understanding of the land market to create solutions for navigating even the most complicated land transactions. ALCs have the experience and specialized expertise to ensure that their client is represented by someone who can maximize the value of their transaction. With a dedication to high ethical standards, a large network of fellow land experts and access to a vast pool of potential buyers/sellers, ALCs provide unprecedented value to their clients.

Land is such a unique, complex, and changing field, you want to make sure you hire an honorable land professional who will recognize the importance of the land to life and share in the responsibility to conduct themselves with high ethical principle and who follow an additional Code of Conduct.

This Code of Conduct is a set of principles which guide decision-making and behavior. The purpose of RLI's Code of Conduct is to provide RLI members with guidelines for making ethical choices in the conduct of their work. *Professional integrity is the cornerstone of credibility reflecting high principles and standards of practice.*

Make it a good practice to always interview at least two to three agents and really talk about your needs. You want to feel comfortable with this person and be able to laugh and cry with them. Make sure you feel you're being heard, and your needs are being met. Taking this advice will give you a feel for what you can expect from different agents. Surprisingly, most sellers consult with a single agent and say, "good enough," so the outcome of their sale is essentially left to chance and the hope that they found a good agent. Always compare at least two agents before making that final decision.

Don't just hope you found a good REALTOR®, have confidence in knowing you are working with an RLI REALTOR® or ALC who is committed to you and will do whatever it takes to achieve your land selling or buying goals. The REALTORS® at 1 Stop Realty are devoted to the land industry, those we serve, and the stewardship to the land.

TESTIMONIALS

*“Dear Wendy and Kirk, Congratulations on your recent honor from the Realtors Land Institute! It is very well deserved, to say the least! In my “book” you two are the best – at solving all related issues in a sale and keeping your clients well informed. The last sale with us was so well done – and you both went to the extra mile to accomplish it – and deal with the bumps along the way. In other words – you are the best!” - **In friendship & gratitude, Sandi Tobin***

*“Thank you for your help on this! We made the right choice in selecting your team. I’m not sure that many could have navigated such a complex transaction as you did.” - **John Oehlke***

*“Wendy, I want to personally thank you for all the help you were to me personally and to my father's trust. You're expertise in farmland sales was such a benefit to us, but I most appreciated your patience and understanding during some very difficult situations over the past 5 years. You were always a true professional, even when it was not easy. I would highly recommend you and 1 Stop Realty to anyone interested in selling property especially farmland.” - **Betty Franz***

*“Kirk, I appreciate getting to know you through this deal and have learned a lot from you! Thanks!” - **Kate***

*“Wendy, you were/are a fine agent to work with. Everyone in the office is so pleasant! Thanks again for all your help and for making the experience doable.” - **Karen***

*“Wendy - The process of selling the farm was a good experience, even with the Covid epidemic! Your experience, knowledge and skills made the process go smoothly and I thank you sincerely. Working with you made the process of selling the farm a much easier process since I was emotionally attached to it. Thank you for all you did. Will keep in touch.” - **Eileen***

*“Dear Wendy, Thank you for your support over the years. We are certain that our paths will continue to cross! Take care” - **Annemieke & Franklin***

*“Tim, it has been great working with you. You followed through with getting me the answers for all the questions I asked, which was very helpful! I look forward to working with you again in the future. Thanks again” - **Kevin Ellingson***

*“We were all very satisfied with the work you did to bring about a successful sale on the farm. If we do decide to sell the rest, you will be the first to know. You all are a first-class business.” - **Sandi & Michael***

*“Kirk & Wendy, First Thank You for the gift, it was a surprise when it was at our front step Christmas Eve morning. And Second Thank You and your staff for all your help in helping us sell the land so we can close the final chapter on my Mom's estate. Happy Holiday's to you and all your staff.” - **Wayne Witzel***

*“You guys are a great bunch there! We'll definitely recommend you for future farm sales.” - **Holly Rosner***

*“Thank you again for looking after us during the sale. We appreciate all of your time and guidance. You can mark us down as “satisfied customers.” :)” - **Erik***

*“Your kindness and caring mean so much to me. Thank you for all that you did during a VERY, VERY difficult time in my life. Wendy, you helped us so much. You stood solid when we needed it. Thank you again.” - **Client***

“The Experienced Farmland Professionals!”



Kirk E. Swenson
President, REALTOR®
Farmland Broker
kirk@farmlandsales.com
Cell: 507-254-5468



Wendy A. Forthun, ALC
Vice President, REALTOR®
Accredited Land Consultant
Farmland Broker
wendy@farmlandsales.com
Cell: 507-251-1637



Tim Gangl
REALTOR®
Farmland Agent
tim@farmlandsales.com
Cell: 507-254-1976



Wendy M. Siewert
Office Coordinator /
Real Estate Assistant
admin@farmlandsales.com
Office: 507-634-7033



1 STOP REALTY, INC.

20 4th Street SE | Kasson, MN 55944
info@farmlandsales.com | 507-634-7033



1STOP REALTY INC

FARMLAND PROFESSIONALS



20 4th Street SE
Kasson, MN 55944
info@farmlandsales.com
507.634.7033

farmlandsales.com

SALES | FARMLAND MANAGEMENT | LAND AUCTIONS | 1031 TAX EXCHANGE

