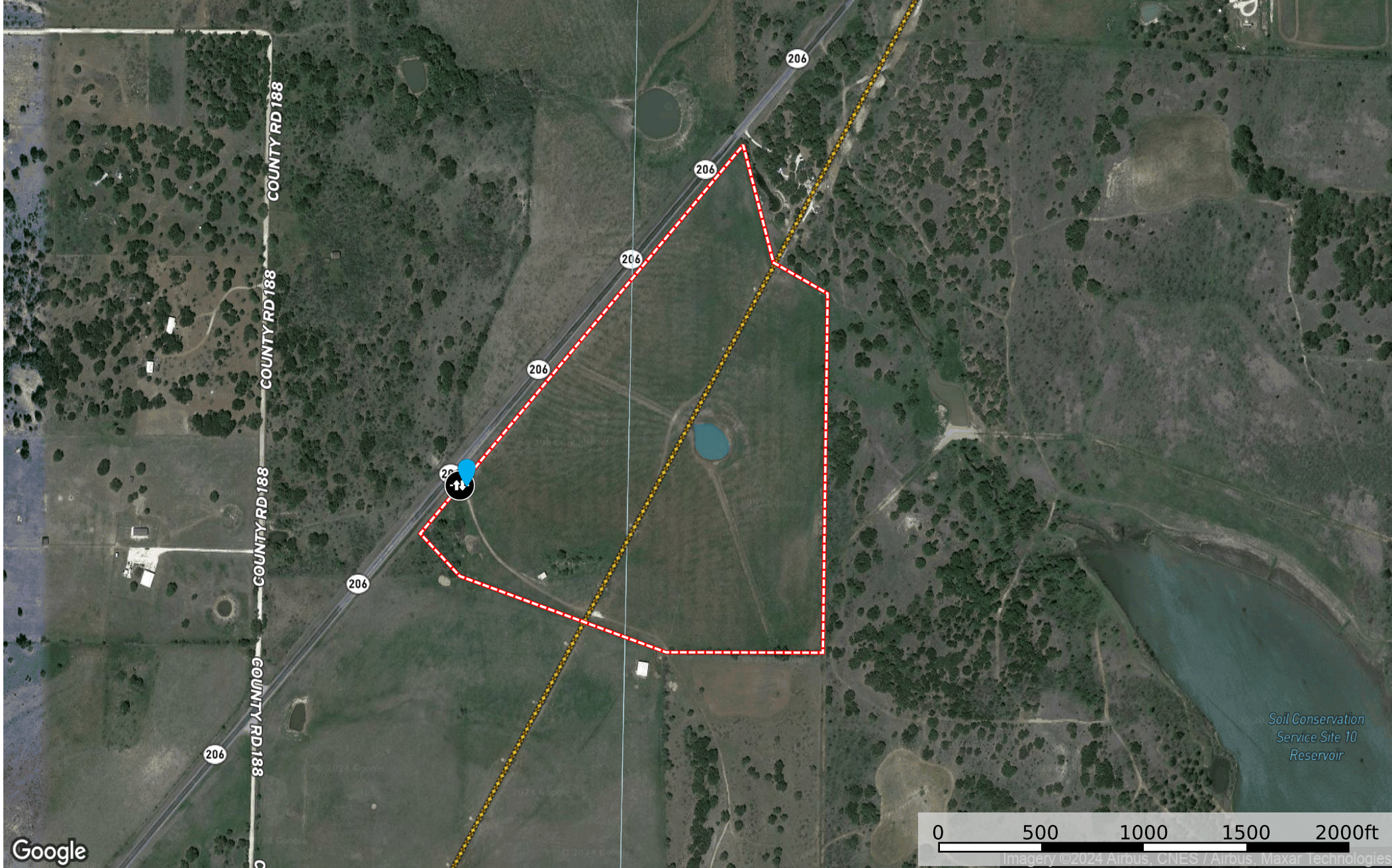


# 60 +/- Ac Hwy 206

Brown County, Coleman County, Texas, 60 AC +/-



- Water Meter
- Gate
- Pond / Tank
- Boundary
- Voltage Unavailable
- Voltage 0 - 99 KV
- Voltage 100 - 161 KV
- Voltage 220 - 287 KV
- Voltage 345 KV
- Voltage 500 KV
- Voltage 735 KV+