

Oak Hollow Ranch
TBD Kramer Road
Graham, TX 76450

\$872,000
160± Acres
Young County



Oak Hollow Ranch
Graham, TX / Young County

SUMMARY

Address

TBD Kramer Road

City, State Zip

Graham, TX 76450

County

Young County

Type

Hunting Land, Ranches, Recreational Land, Undeveloped Land

Latitude / Longitude

33.041109 / -98.887214

Taxes (Annually)

\$70

Acreage

160

Price

\$872,000

Property Website

<https://cfreland.com/detail/oak-hollow-ranch/young/texas/55871/>



Oak Hollow Ranch

Graham, TX / Young County

PROPERTY DESCRIPTION

Situated 20 miles west of Graham, TX, Oak Hollow Ranch offers an idyllic sanctuary for hunting enthusiasts. Boasting sprawling mature mesquite and oak vegetation, the ranch is abundant in native wildlife and serves as a haven for these creatures. Additionally, the presence of large neighbors surrounding the ranch on three sides significantly reduces hunting pressure for whitetail deer. With two ponds on the property, the southern boundary hosts the larger of the two. Though they would benefit from dredging, both ponds are essential for the property's drought-resistant measures. Sprawling post-oak clusters dominate the east and west sides of the ranch, making them perfect sites for building a hunting cabin or homestead. Moreover, the soils of the ranch mainly comprise fine sandy loam that is well-suited for farming, grazing, and wildlife conservation. Whether you want to expand your cattle business or establish a hunting property, Oak Hollow Ranch caters to your every need as a multi-use ranch.

-- WATER, COVER & TERRAIN --

- Surface Water ~ Two ponds
- Water ~ Fort Belknap Water Supply Co. available
- Tree Cover ~ 100% heavily wooded, oak, mesquite, hackberry
- Underbrush ~ Heavy underbrush
- Native Grasses ~ Native grass cover
- Grazing ~ Currently leased for grazing
- Soils ~ Bluegrove Fine Sandy Loam, Gravelly Sandy Loam

-- HUNTING & RECREATION --

- Wildlife ~ Whitetail Deer, duck, Rio-Grande Turkey, dove, hogs, varmint
- Hunting Pressure ~ Large neighbors on three sides
- Land ~ Good wildlife cover
- Native Grasses ~ Thick grasses, excellent bedding

-- MINERALS & WIND --

- Mineral Rights ~ Mineral interest unknown
- O&G Production ~ No production
- Wind Rights ~ 100% wind rights convey
- Wind Production ~ No active wind lease turbines

-- ACCESS & DISTANCES --

- Road Frontage ~ Gravel, dead end of Kramer Road
- Piped Entrance ~ Steel gate
- Nearby Towns ~ 20 miles from Graham, Texas city limits
- Major Cities ~ 50 mi NW of Mineral Wells, 100 mi WNW of Fort Worth
- Airports ~ 20 mi W of Graham Municipal, 55 mi SW of Wichita Falls Regional

AGENT COMMENTS: Oak Hollow Ranch stands out as a unique ranch in the region, with great wildlife and hunting potential, as well as access to utilities. Its serene surroundings make it an ideal location for a hunting retreat or future homestead, but also as a useful ranching operation if desired.

Listing Agent: Heath Kramer [940-456-0575](tel:940-456-0575)

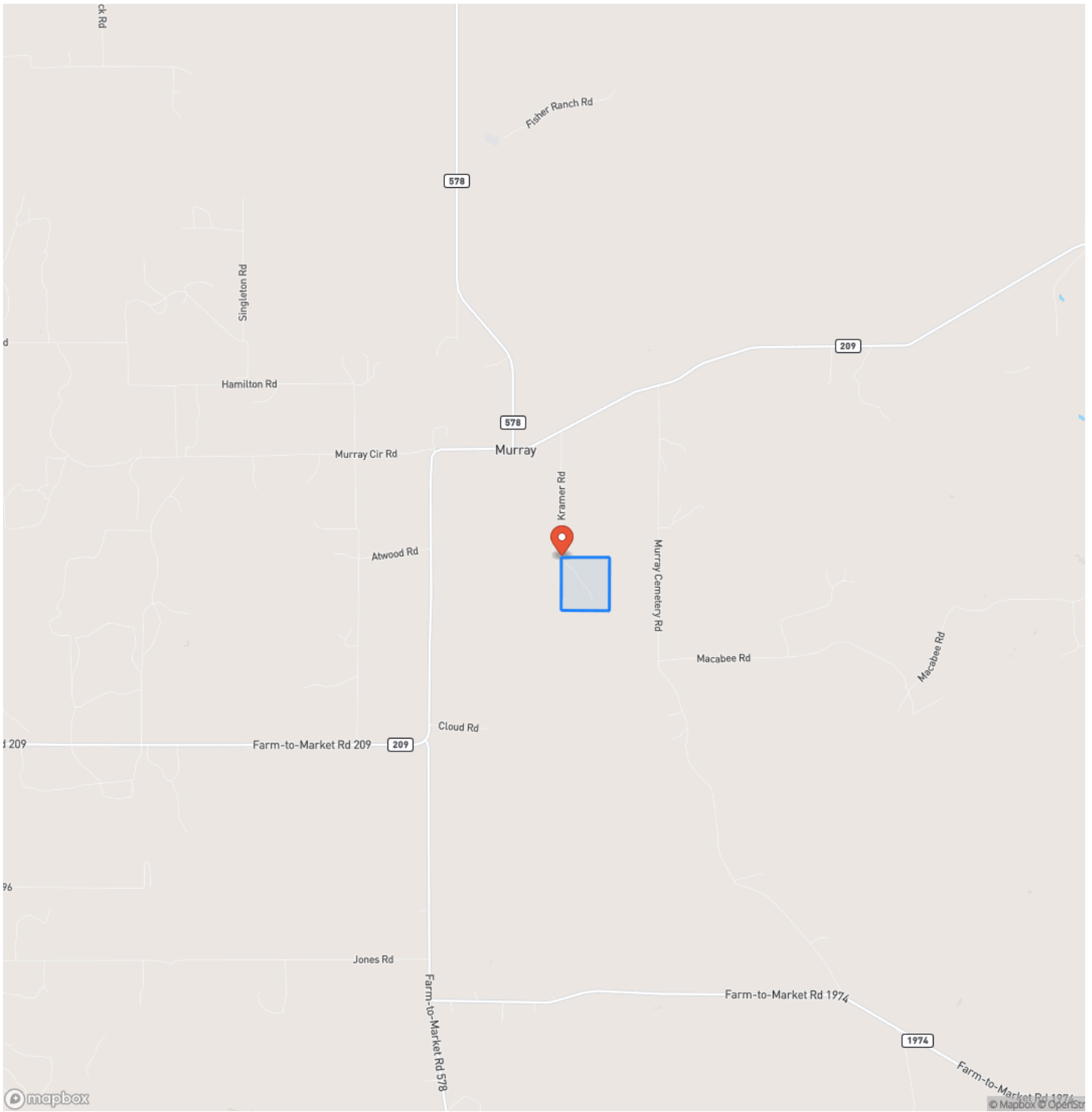
Additional Notices & Disclaimers: Campbell Farm & Ranch welcomes all cooperating agents and brokers. Cooperating Agents and Brokers must make "first contact" with the listing agent and be present at all showings to fully participate in the commission split. Commission split is at Campbell Farm & Ranch LLC's sole discretion. No Trespassing--Don't hesitate to contact a Campbell Farm & Ranch team member for a showing. All information in this advertisement is understood to be accurate and reliable but is not guaranteed. Please verify all information before using the information for decision-making purposes. All listing information is subject to errors, omissions, price changes, terms changes, or removal from the market without notice. Campbell Farm & Ranch presents all offers, the seller has the right to refuse any offer, review multiple offers, and accept backup offers.



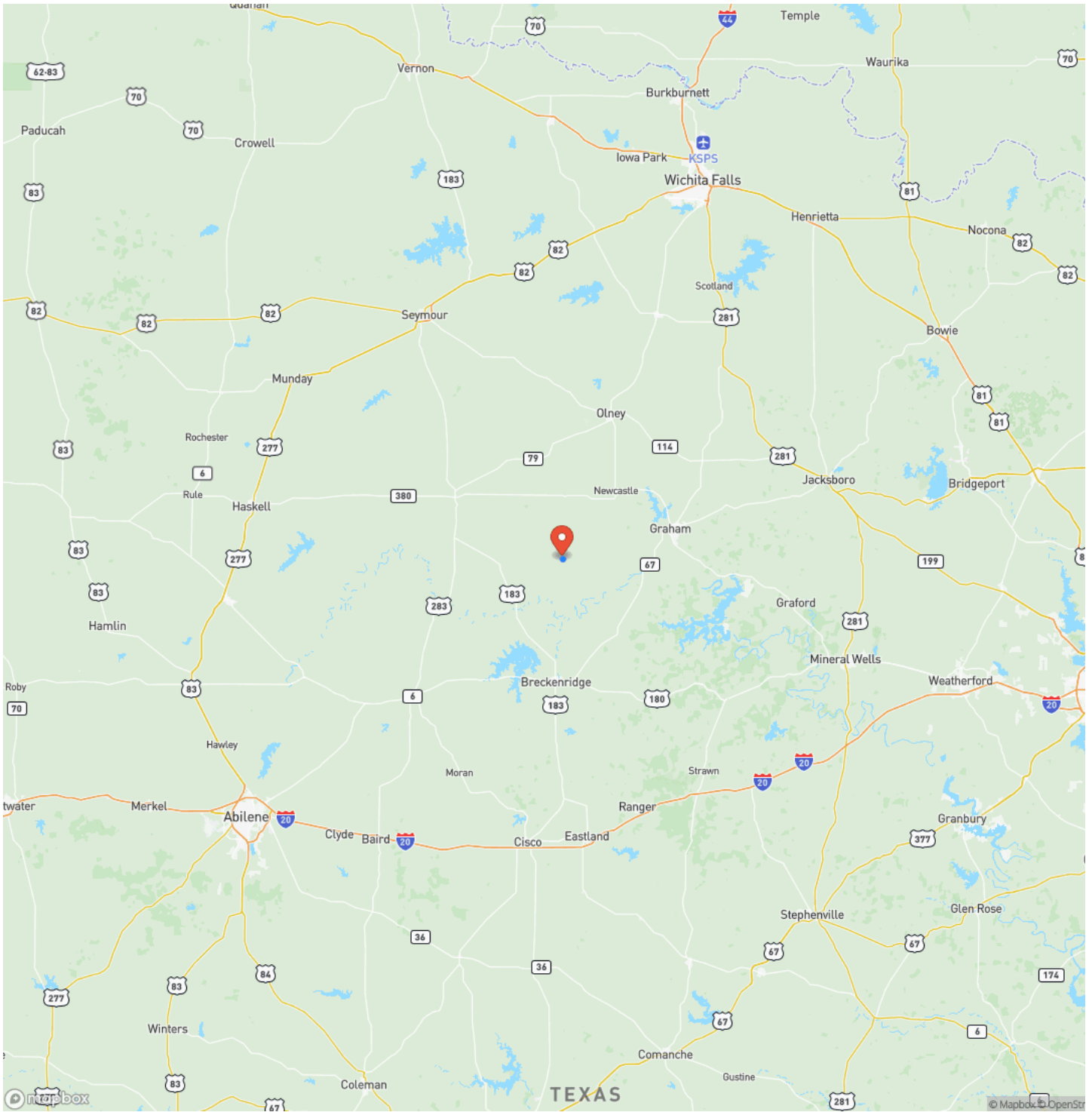
Oak Hollow Ranch
Graham, TX / Young County



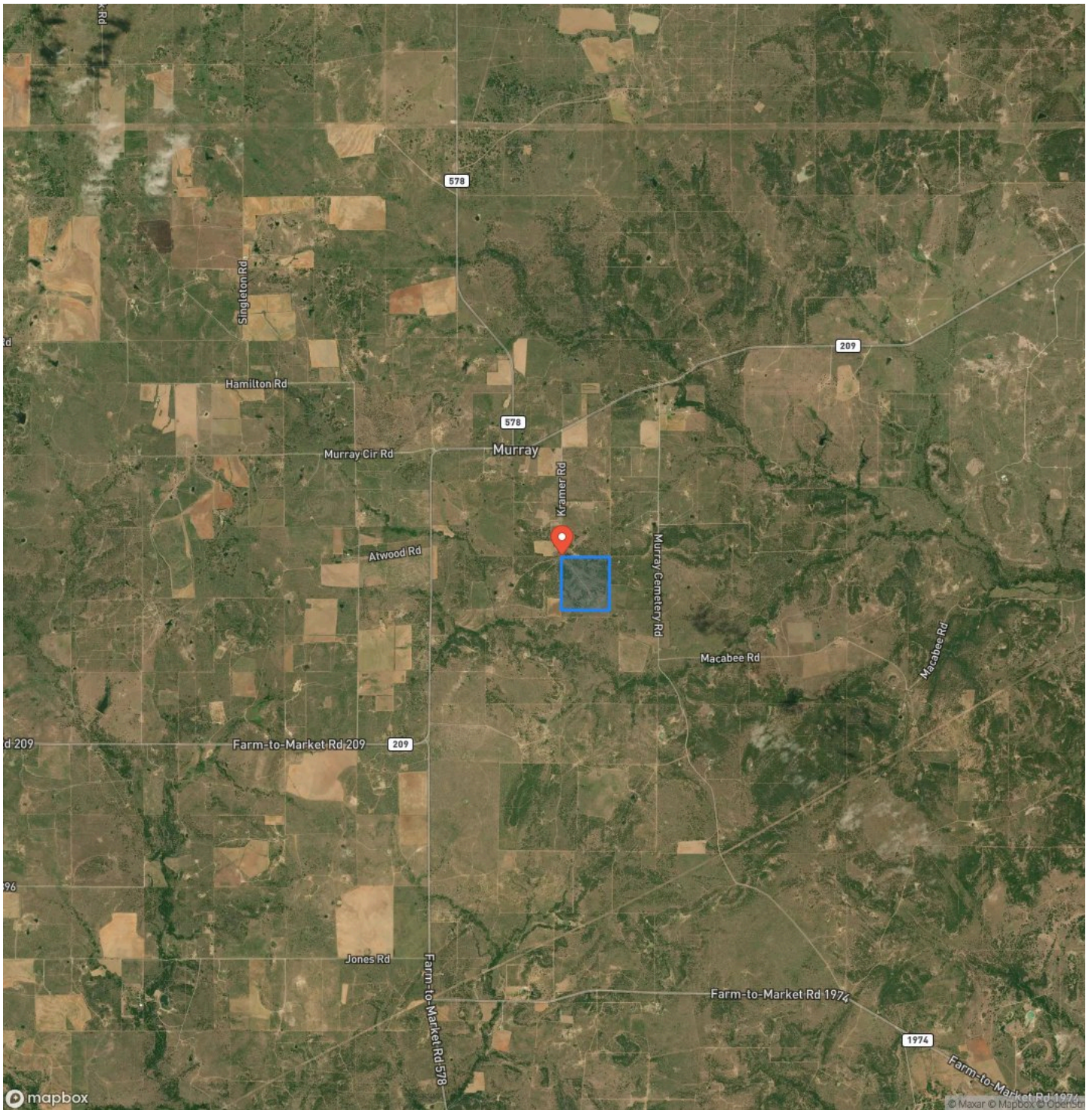
Locator Map



Locator Map



Satellite Map



DISCLAIMERS

Information in this brochure is provided solely for information purposes and does not constitute an offer to sell or advertise real estate outside the states in which broker or agent licensed. The information presented has been obtained from sources deemed to be reliable, but is not guaranteed or warranted by the agent, broker, or the sellers of these properties. This offering is subject to errors, omissions, prior sale, price change, correction or withdrawal from the market without notice. All references to age, square footage, income, expenses, acreage, carrying capacity, and land classification, etc. are approximate. Prospective buyers are chargeable with and expected to conduct their own independent investigation of the information and the property and to rely only on those results. Sellers reserve the right to accept or reject any and all offers without liability to any buyer or cooperating broker.

Maps are provided for illustration purposes only, the accuracy is not warranted. Parcels on interactive maps are not adjusted to match aerial backgrounds. This information is for reference purposes only and is not a legal document. Data maps contain errors. The seller and seller's agent are making known to all potential buyers that there may be variations between the location of the existing fence lines and the legal description of the deeded property. Seller and seller's agent make no warranties with regard to the location of the fence lines in relationship to the deeded property lines, nor does the Seller make any warranties or representations with regard to the specific acreage contained within the fenced property lines. Seller is selling the property in an "as is" condition, which includes the location of the fences as they exist. Boundaries shown on the accompanying maps are approximate, based on county parcel data. The maps are not to scale. The accuracy of the maps is not guaranteed. Prospective buyers are encouraged to verify fence lines, deeded property lines and acreages using a licensed surveyor at their own expense.

Campbell Farm & Ranch
801 Elm Street
Graham, TX 76450
(940) 549-7700
CFRLand.com
