

# 0.7± Acre Residential Lot in Madison, MS



**\$100,000**

This 0.7± acre Madison County, MS, lot offers the perfect opportunity to build your dream home in the desirable residential area of Knightsbridge Subdivision. With ample space for the home of your dreams, this lot provides the ideal canvas for your new home. Located in a peaceful, family-friendly neighborhood with easy access to local amenities, schools, and major roads. Don't miss out on this rare opportunity to own a beautiful piece of land for your future home. Call Brady to schedule your private showing today!



**BRADY  
RICHARDSON**  
REALTOR®

Office: 601.898.2772

Cell: 662.418.8791

Brady@TomSmithLand.com



Expect More. Get More.

**A Real Estate Expert You Can Trust**

TomSmithLandandHomes.com

Information is believed to be accurate but not guaranteed.





# Aerial Photo & Entry



**A Real Estate Expert**  
*You Can Trust!*

**BRADY RICHARDSON**  
REALTOR®

O: 601.898.2772 C: 662.418.8791

Brady@TomSmithLandandHomes.com

TomSmithLandandHomes.com



Expect More. Get More.



Information is believed to be accurate but not guaranteed.





## A Real Estate Expert *You Can Trust!*

**BRADY RICHARDSON**  
REALTOR®

O: 601.898.2772 C: 662.418.8791

Brady@TomSmithLand.com

TomSmithLandandHomes.com



Expect More. Get More.

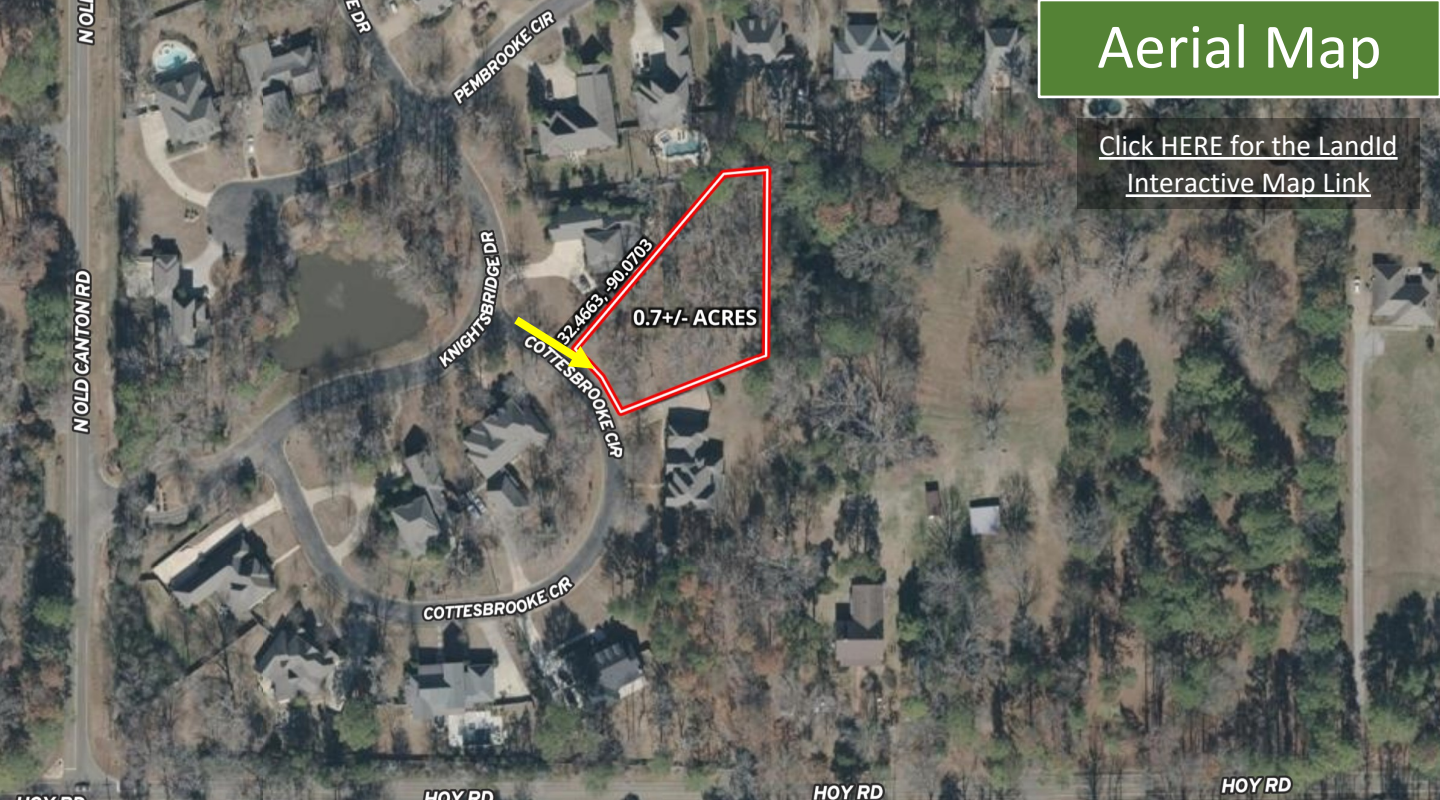


Information is believed to be accurate but not guaranteed.



# Aerial Map

[Click HERE for the LandId Interactive Map Link](#)



# Ownership Map



**A Real Estate Expert  
You Can Trust!**

**BRADY RICHARDSON**  
REALTOR®

O: 601.898.2772 C: 662.418.8791

Brady@TomSmithLandandHomes.com

TomSmithLandandHomes.com

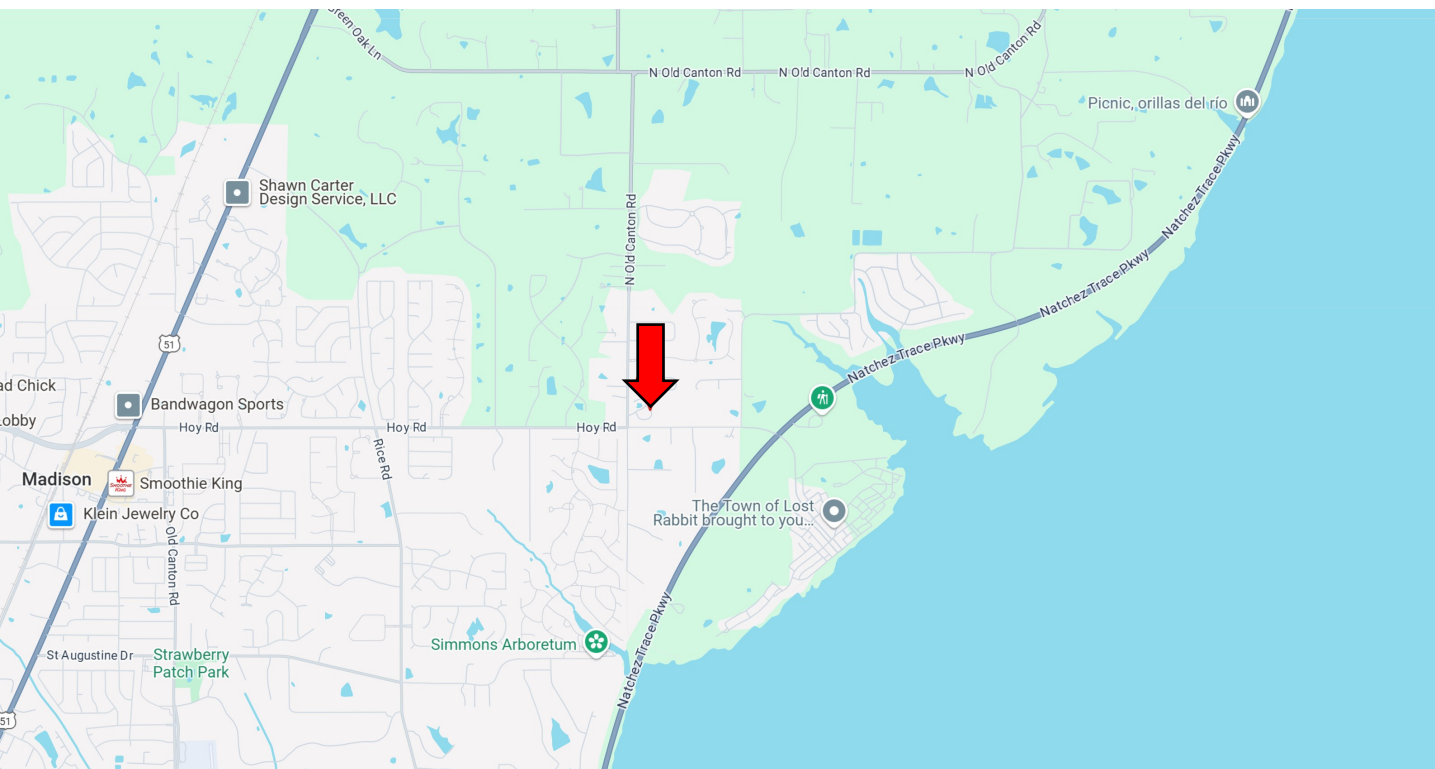


Expect More. Get More.



Information is believed to be accurate but not guaranteed.

# Directional Map



Directions from the intersection of Hwy 51 and Hoy Road in Madison, MS: Turn onto Hoy Road and travel 2.2 miles. Turn left onto N Old Canton Road and then immediately turn right onto Cottesbrooke Circle and travel 482 feet. Turn right then the property will be on your left. [Google Map Link](#)



**BRADY  
RICHARDSON**  
REALTOR®

Office: 601.898.2772

Cell: 662.418.8791

Brady@TomSmithLand.com



Expect More. Get More.

**A Real Estate Expert You Can Trust**

TomSmithLandandHomes.com

Information is believed to be accurate but not guaranteed.

