



Smithville Tract

Off of Van Buren Carolina and Palmer Roads, Itawamba County, MS

+/- 160.4 Acres

Timberland / Hunting / Recreation

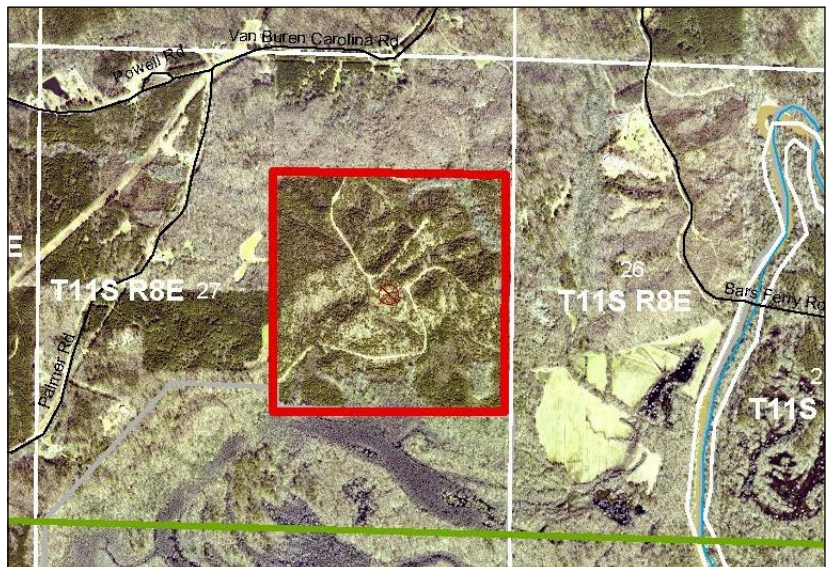
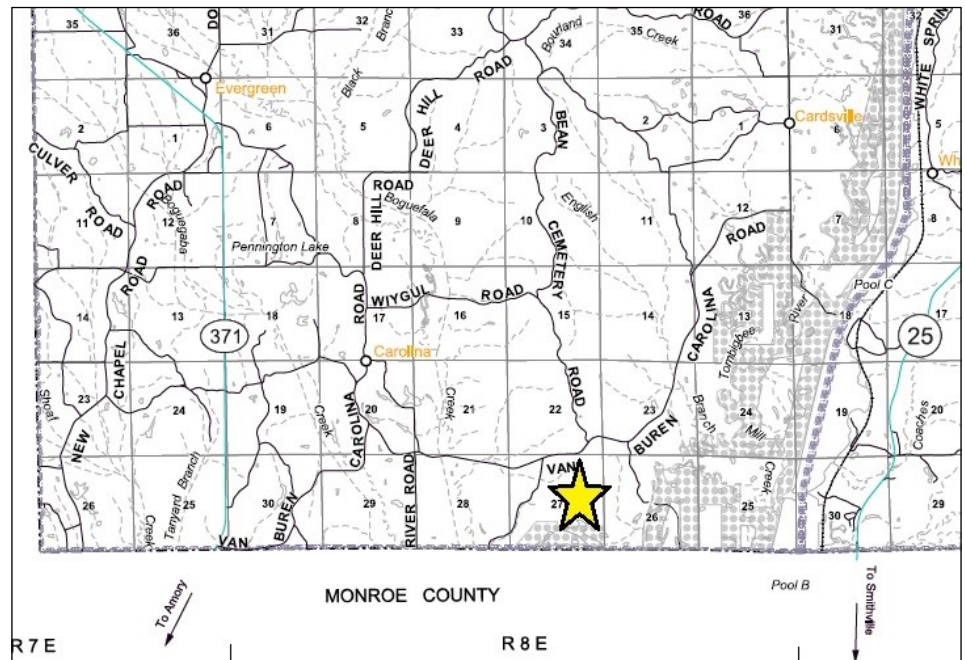
\$380,974.00

P. O. Box 600
Gordo, AL 35466
205-364-7145
Dale Lancaster, Broker

Section 27, Township 11 South, Range 8 East
34.0958 -88.4429

For more info: www.midsouthforestry.com

Unlock your outdoor adventure with this 160.4 +/- acres of timberland bordering the Canal Section WMA in Itawamba County, MS. Nestled off Van Buren and Palmer Roads, it's conveniently located just 14 miles from Amory, 20 miles from Fulton, and 23 miles from Tupelo. This tract boasts 142 +/- acres of pine plantation established in 2016, complemented by hardwoods in low-lying areas, making it a prime spot for both investment and recreation. With abundant hunting opportunities for deer, turkey, and small game, it's a perfect spot for avid outdoorsmen. Whether you're looking to invest in timber or create the ultimate hunting camp, this land offers endless potential. Don't miss out on your chance to build memories and enjoy nature right at your doorstep!



All information furnished is assumed to be accurate and correct. However, neither the property owner nor Midsouth Forestry Services warrant the accuracy of information furnished. Prospective buyers should satisfy themselves as to the accuracy of this information. No representation or warranties are expressed or implied as to the property, its condition, boundaries, access, acres, zoning, condition of title or fair market value.
Rev. 022425