



**Jett Blackburn
Real Estate Inc.**



Harney Farm

\$2,600,000



Curt Contact Card

Presented by
Curt Blackburn & Jake Blackburn
United Country Jett Blackburn Real Estate Inc.
707 Ponderosa Village
Burns, OR 97720
541-413-5668 (Office)
541-413-5777 (Curt cell) 541-413-5774 (Jake cell)
www.jettblackburn.com



Jake Contact Card



LOCATION: Approx. 25 miles east of Burns, Oregon off Hwy 78

ACREAGE: 720 deeded acres consisting of the following:
 572 +/- acres pivot irrigated
 146 +/- acres pivot corners, roads & open ground
 2 +/- acres improvements & haystack yard

CROPS: 250 +/- acres planted in alfalfa hay
 322 +/- acres planted in triticale

IRRIG. EQUIP: 2 – Turbine pumps
 2 – Submersible pump with variable speed & soft start
 4 – approx. 1/4 mile Reinke Pivots installed in 2009
 1 – approx. 1/4 mile Reinke Pivot to be installed in 2022

WELLS: 4 – irrigation wells
 2 – stock well

WATER RIGHTS:

<u>Certificate #</u>	<u>Priority Date</u>	<u>Acres</u>
94462	May 29, 2008	715.2

**IMPROVEMENTS:**

- 1 – 864 sqft metal shop with concrete floor
- 1 – storage container

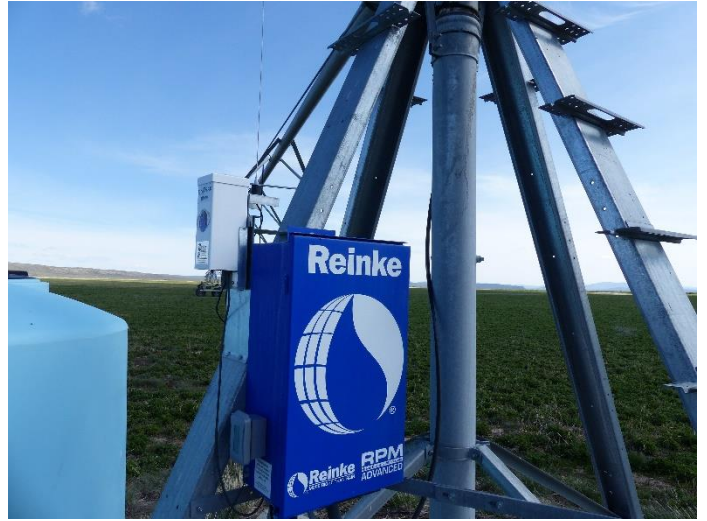
TAXES: \$4,466.76 (2022/2023)

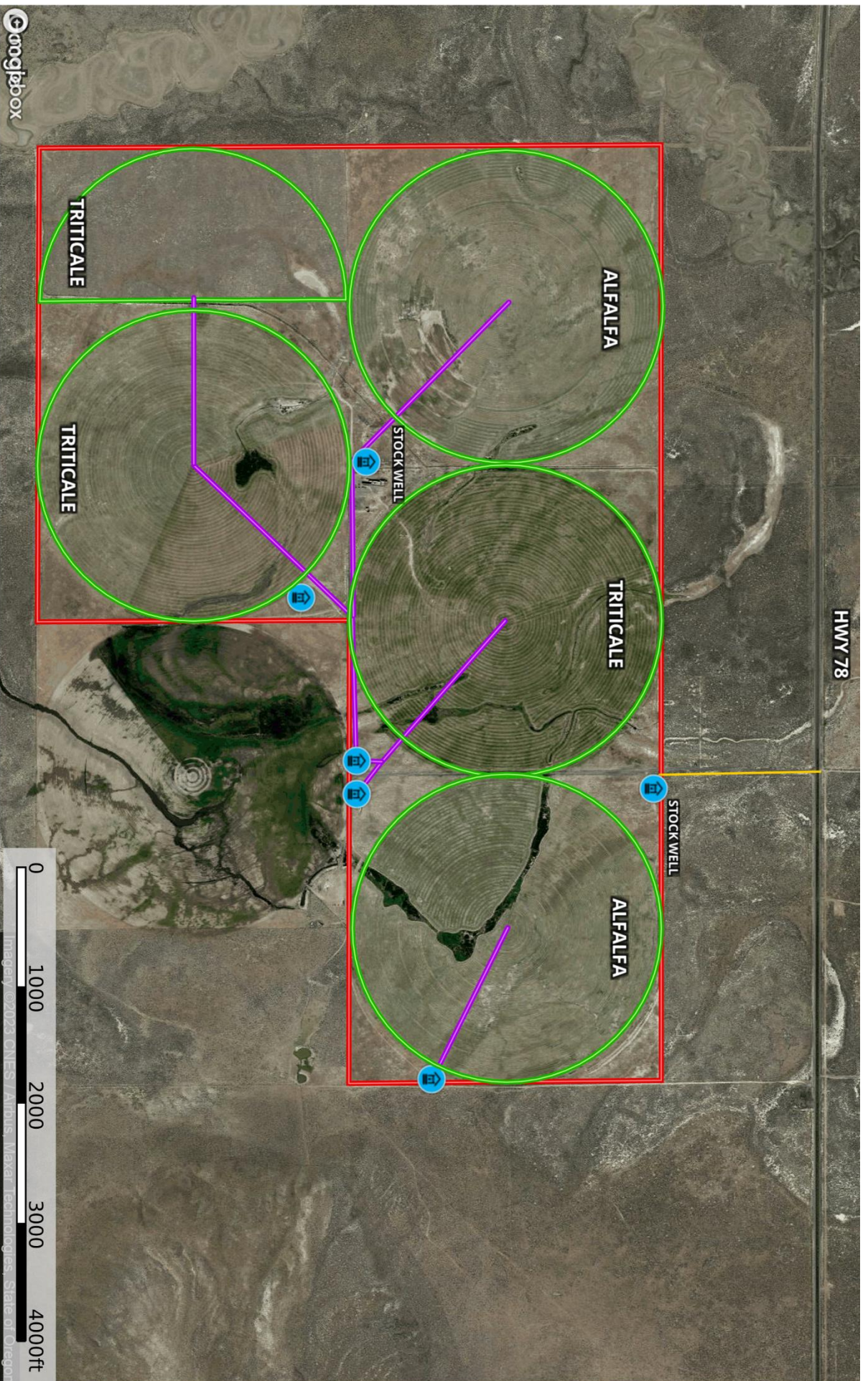
PRICE: \$2,600,000

COMMENTS: This Eastern Oregon farm is located ¼ miles off Hwy 78 about 25 minutes East of Burns & 5 minutes West of Crane. The 720 acres of deeded ground has 5 Reinke pivots on it that irrigate 572+/- acres. The ground has approximately 250+/- acres planted into alfalfa with a little orchard grass with the remaining 322+/- acres planted in fall triticale. The 5 pivots are serviced by 4 irrigation wells. Improvements include a smaller metal shop with a concrete floor, storage container, and a large graveled area for hay storage. The perimeter of the property is fully fenced and there are 2 additional stock wells located on the premise.

Along with this, all pivots are equipped with an “On Trac” radio system which will notify you by cell phone if there is a shutdown to help prevent longer breakdowns and allow you to know as soon as a problem arises.

Overall, this property produces 2,250-2,500 tons of feed and is in a great location between Burns & Crane. For more information or questions contact the listing agents





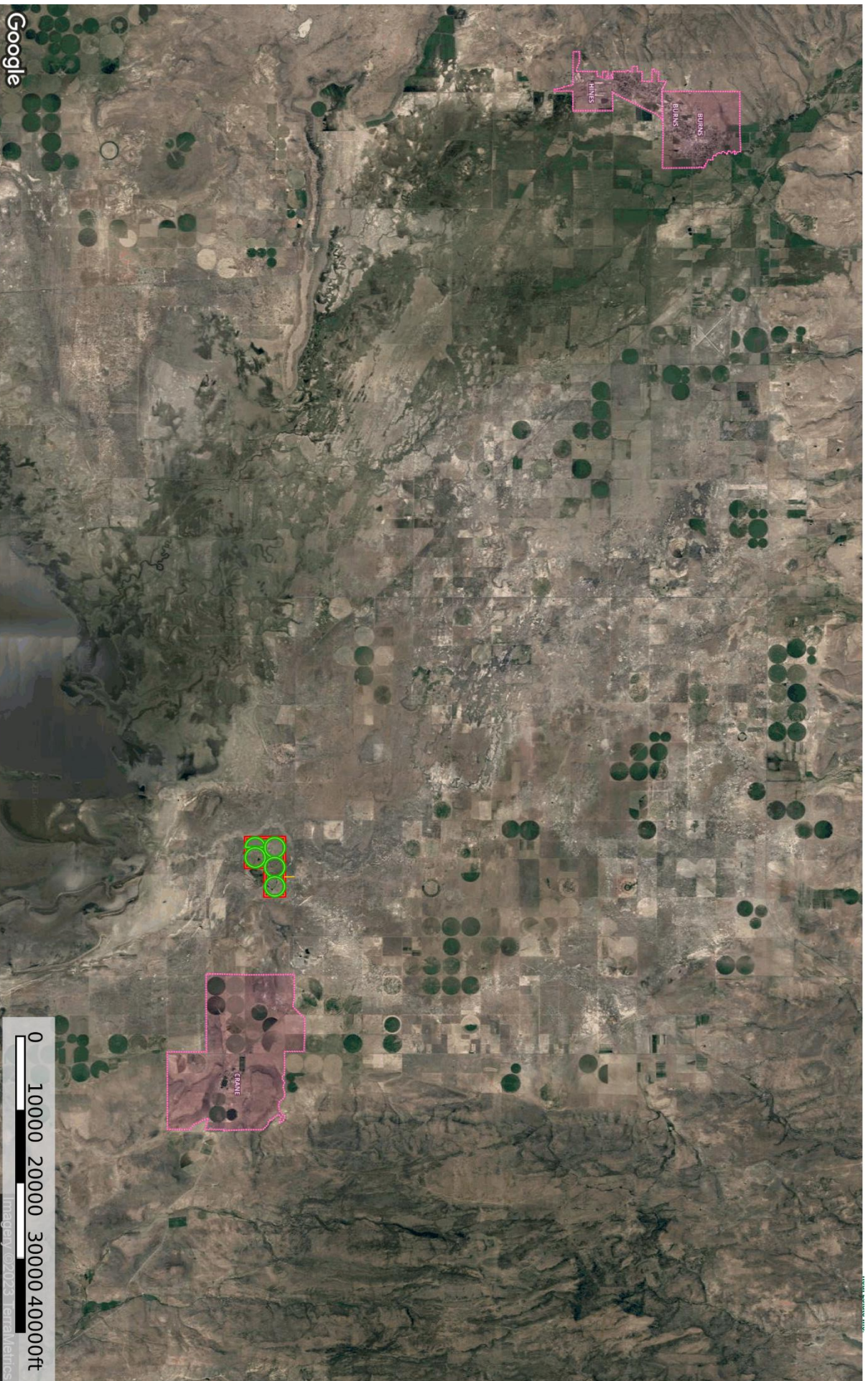
- Well
- Primary Road
- Pipeline
- Boundary
- Pivot

Curt Blackburn
P: 541-573-1206

office@jetblackburn.com

707 Ponderosa Village, Burns, OR 97720

M The information contained herein was obtained from sources deemed to be reliable. MapRight Services makes no warranties or guarantees as to the completeness or accuracy thereof.



Curt Blackburn
P: 541-573-7206

office@jetblackburn.com

707 Ponderosa Village, Burns, OR 97720



The information contained herein was obtained from sources deemed to be reliable. MapRight Services makes no warranties or guarantees as to the completeness or accuracy thereof.