

# RECREATIONAL TRACT

80 +/- ACRES IN NEWTON COUNTY, MS



\$197,500

This 80± acre property in Newton County, MS, is a pristine recreational tract featuring the perfect blend of hardwood and pine timber. This diverse tract offers an array of opportunities for outdoor enthusiasts, making it an ideal investment for those seeking a hunting getaway. Abundant with deer and turkey, the property promises an affordable and rewarding hunting experience for you and your family. Imagine creating lasting memories with your loved ones while enjoying the expansive 80 acres! Take advantage of the opportunity to make this remarkable piece of land your own! Call David or Dale to schedule your showing today!



**DALE WILDS**  
REALTOR®

O: 601.898.2772 | C: 662.715.7109  
Dale@TomSmithLand.com



**DAVID BELDEN**  
ALC®, REALTOR®

O: 601.898.2772 | C: 601.415.3884  
DBelden@TomSmithLand.com

**TomSmithLandandHomes.com**

Information is believed to be accurate but not guaranteed.





**DALE WILDS**  
REALTOR®

O: 601.898.2772 | C: 662.715.7109  
Dale@TomSmithLand.com



**DAVID BELDEN**  
ALC®, REALTOR®

O: 601.898.2772 | C: 601.415.3884  
DBelden@TomSmithLand.com

**TomSmithLandandHomes.com**

Information is believed to be accurate but not guaranteed.



# Aerial Map



[Click Here for an Interactive Map](#)



**DALE WILDS**  
REALTOR®

O: 601.898.2772 | C: 662.715.7109  
Dale@TomSmithLand.com

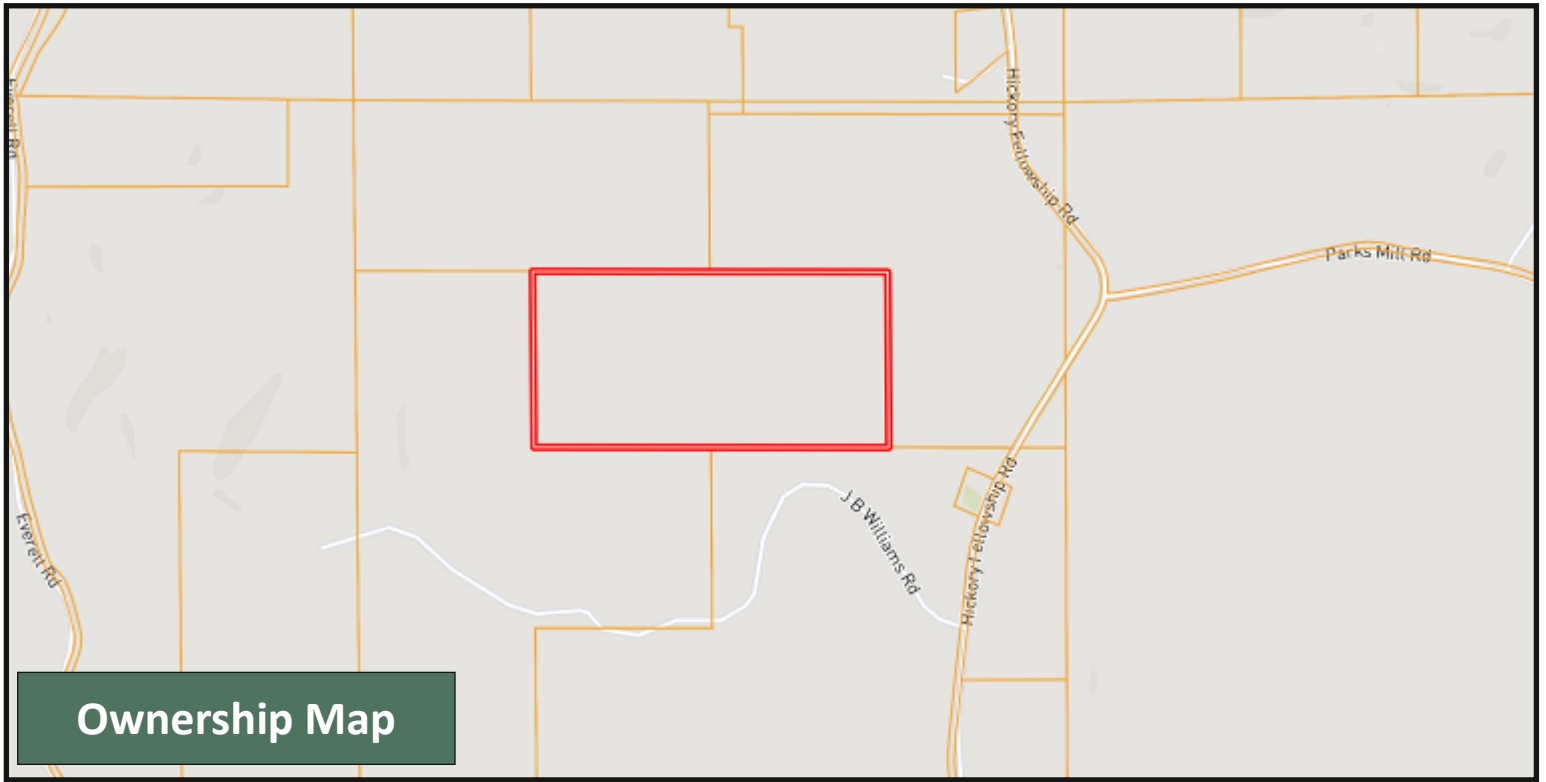
**DAVID BELDEN**  
ALC®, REALTOR®

O: 601.898.2772 | C: 601.415.3884  
DBelden@TomSmithLand.com

**TomSmithLandandHomes.com**

Information is believed to be accurate but not guaranteed.





**Ownership Map**



**Topo Map**



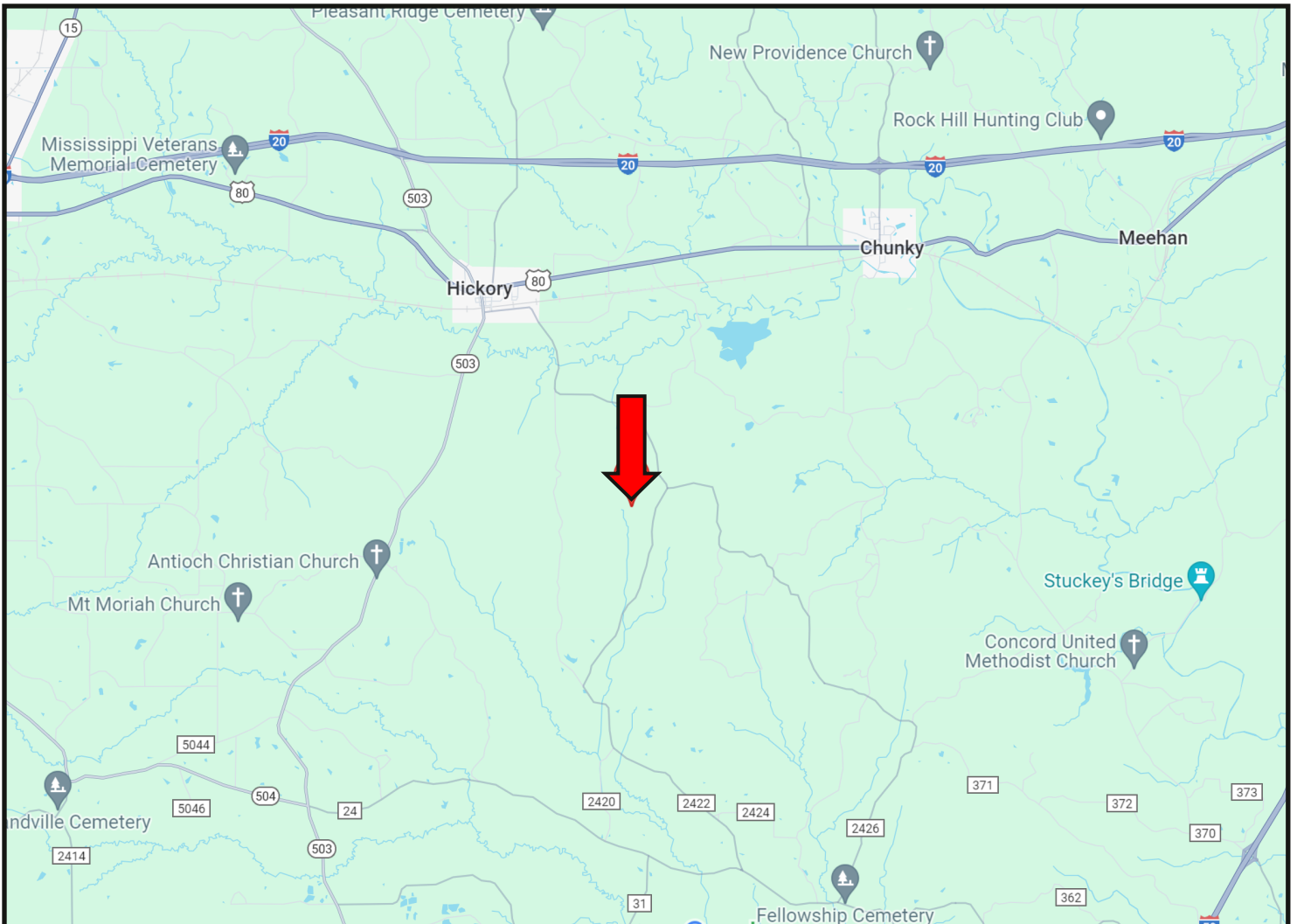
**DALE WILDS**  
REALTOR®

O: 601.898.2772 | C: 662.715.7109  
Dale@TomSmithLand.com

**DAVID BELDEN**  
ALC®, REALTOR®

O: 601.898.2772 | C: 601.415.3884  
DBelden@TomSmithLand.com

# Directional Map



Directions from I-20 E in Hickory, MS: Take exit 115 towards Hwy 503 S. Turn right onto Hwy 503 and travel 2.2 miles. Turn left onto Hwy 80 and then take an immediate right onto Jefferson Street. Turn left onto Emmanuel Street and travel .9 mile. Continue onto Hickory Fellowship Road and travel 3.9 miles. Turn right onto JB Williams Rd. After .4 mile, the property entrance will be on your right. [GOOGLE MAP LINK](#)



**DALE WILDS**  
REALTOR®

O: 601.898.2772 | C: 662.715.7109  
Dale@TomSmithLand.com



Expect More. Get More.



**DAVID BELDEN**  
ALC®, REALTOR®

O: 601.898.2772 | C: 601.415.3884  
DBelden@TomSmithLand.com

**TomSmithLandandHomes.com**

Information is believed to be accurate but not guaranteed.

Member  
2011-2024  
BEST  
BROKERAGES