

**REFERENCE TO NORTH**

BEARINGS SHOWN HEREON HAVE BEEN CALCULATED FROM ANGLES TURNED AND ARE BASED UPON PLAT SLIDE 70-Q.

**NOEL & KAY WILLIAMS**  
JBF FILE NO. 2585  
JBF PLAT NO. 820  
PLAT SLIDE 62-D

NORTH PROP. LINE CEDAR  
CREEK CORPORATE PARK

LL 166

LL 187

LL 187

LL 198

(PLAT SLIDE 62-Q)

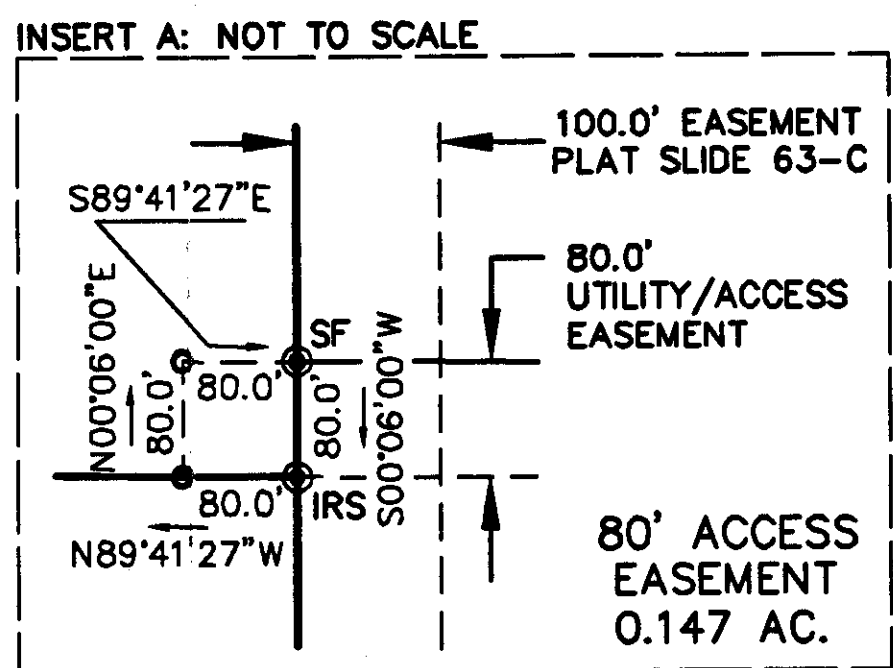
LL 165

LL 188

LL 188

LL 197

(PLAT SLIDE 70-Q)



CRISP COUNTY

CITY OF CORDELE

**OWENS CORNING**  
JBF FILE NO. 21088  
JBF PLAT NO. 1396  
PLAT SLIDE 70-Q

**CITY OF CORDELE**  
(UTILITY EASEMENT)  
WATER TANK SITE  
AS PER KECK & WOOD, INC.  
TANK LOCATION PLAN  
PROJECT NO. 040130  
DATED 02-03-05

LINE TABLE		
LINE	LENGTH	BEARING
A-B	185.65'	N05°37'42"W
B-C	819.23'	N48°47'44"E
C-D	564.20'	N00°20'00"E
D-E	447.51'	N00°34'14"W
E-F	209.08'	N01°56'30"E
F-G	303.02'	N00°06'00"E
G-H	656.94'	N00°06'00"E
H-I	1142.78'	S87°40'43"W
I-J	54.75'	S03°51'34"E
J-K	178.95'	S00°06'00"W

**LEGEND**

- IRF - DENOTES 1/2" IRON REBAR FOUND
- IRS - DENOTES 1/2" IRON REBAR SET
- OTP - DENOTES OPEN TOP IRON PIPE FOUND
- CTP - DENOTES CRIMP TOP IRON PIPE FOUND
- CMF - DENOTES CONCRETE MONUMENT FOUND
- LLL - DENOTES LAND LOT LINE
- LDL - DENOTES LAND DISTRICT LINE
- POB - DENOTES POINT OF BEGINNING
- R/W - DENOTES RIGHT OF WAY
- SF - DENOTES 8" STEEL SPIKE FOUND
- X- - DENOTES FENCE LINE

**REFERENCE TO EASEMENTS**

NOTE: THIS SURVEY IS SUBJECT TO MATTERS WHICH MAY BE DISCLOSED BY A FULL AND ACCURATE TITLE SEARCH, INCLUDING, BUT NOT LIMITED TO, ANY EASEMENTS OR RIGHTS OF WAY NOT SHOWN HEREON BUT WHICH MAY AFFECT THE PROPERTY HERE PLATTED.

HWY. 300 R/W REF.  
CIVIL ACTION FILE NO. 81V-032  
D.B. 148, PG. 7  
D.B. 148, PG. 9

**DEED REFERENCES**

D.B. 105, PG. 484  
D.B. 93, PG. 660

**PLAT REFERENCES**

D.B. 148, PG. 9  
PLAT SLIDE 32-S  
PLAT SLIDE 46-A  
PLAT SLIDE 62-Q  
PLAT SLIDE 63-C  
PLAT SLIDE 63-C1  
PLAT SLIDE 70-Q

LINE TABLE		
LINE	LENGTH	BEARING
L1	227.29'	N50°47'07"E

CURVE TABLE				
CURVE	LENGTH	RADIUS	CHORD	CHD. BEARING
C1	297.78'	23123.32'	297.78'	S88°29'54"E
C2	324.56'	23273.32'	324.56'	S88°06'26"E

**GRAPHIC SCALE**



( IN FEET )  
1 inch = 400 ft.

**MRS. HELEN GARWOOD**  
D.B. 34, PG. 88

**TRACT A**  
152.455 ACRES

**TRACT A1**  
18.636 ACRES

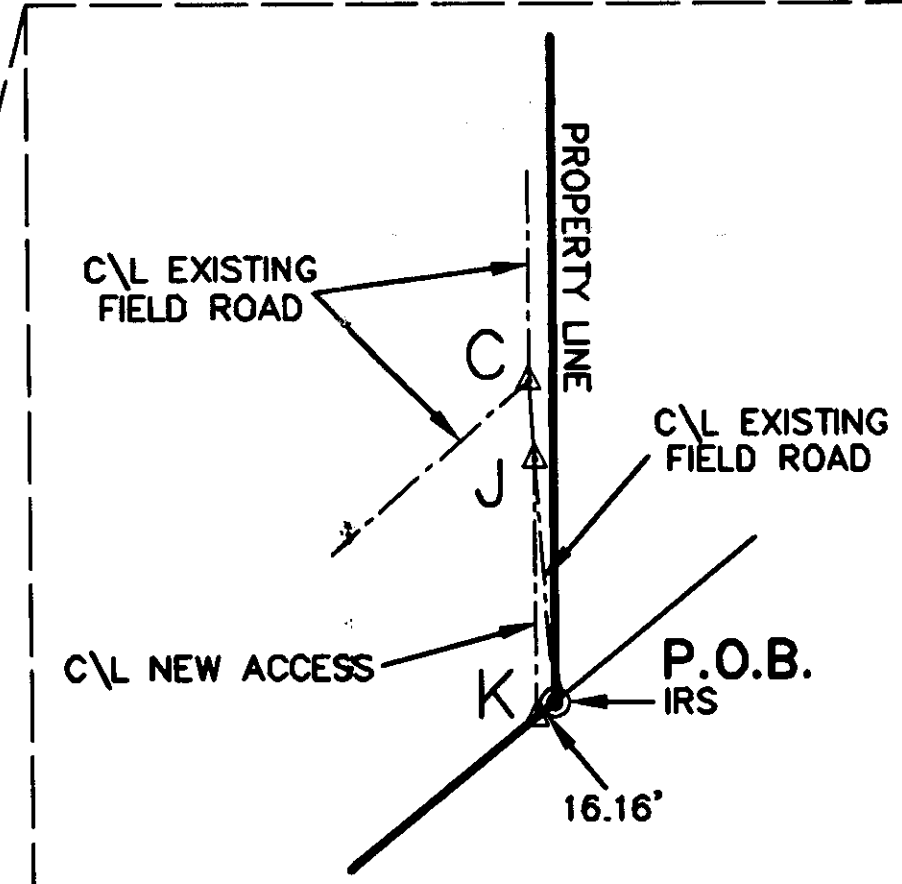
**TRACT B**  
56.182 ACRES

**TRACT B1 - 9.497 ACRES**

**MARY NELL TITSHAW**  
D.B. 401, PG. 210

117  
GEORGIA, CRISP COUNTY  
FILED December 31, 2008  
TIME 4:13 Pm  
BY S. B. Z.

**INSERT B: NOT TO SCALE**



SPECIAL NOTE: APPROVAL OF THIS PLAT BY THE PLANNING DEPARTMENT IS NOT REQUIRED UNDER THE PROVISIONS OF O.C.G.A. 15-6-67(d), THE TRACT OR TRACTS DEPICTED ON THIS PLAT ARE NOT ELIGIBLE FOR CONNECTION TO A SANITARY SEWER SYSTEM OR FOR ON-SITE SEWAGE DISPOSAL (SEPTIC TANK) APPROVAL.

**TOTAL ACRES FOR ALL TRACT = 236.770 ACRES**

PURPOSE FOR REVISION: TO SHOW SPECIAL NOTE.

THE FIELD DATA UPON WHICH THIS PLAT IS BASED HAS A CLOSURE PRECISION OF ONE FOOT IN 22,534 FEET AND AN ANGULAR ERROR OF 03" PER ANGLE POINT, AND WAS ADJUSTED USING THE LEAST SQUARES METHOD.

EQUIPMENT USED: TOPCON GPT 3005-W AND TRIPOD DATA SYSTEMS

PROJECT: C:\FAIRCLOTH\FAIRCLOTH\2005\OWENSCORNING\LFMcKINNEY.DWG

DRAWN BY: SMK FILE NO. 3057 PLAT NO. 1034 DATE OF ISSUANCE: 12-31-08

**CRISP COUNTY CORDELE INDUSTRIAL DEVELOPMENT AUTHORITY**

**ALL OF LAND LOT 188 & PART OF LAND LOT 189, 10th. LAND DISTRICT, CRISP COUNTY, GEORGIA**

**J.B. FAIRCLOTH & ASSOCIATES, P.C.**  
LAND SURVEYING, PLANNING AND MAPPING

J.B. FAIRCLOTH,  
GA. RLS 2120  
GA. RF 1640

1109 EAST 13th. AVE.  
CORDELE, GEORGIA 31015  
PHONE (229)-273-1282  
FAX (229)-273-2340

JASON B. FAIRCLOTH,  
GA. RLS 2981



SCALE: 1 INCH REPRESENTS 400 FEET  
REVISIONS: DEC. 29, 2008

DATE OF SURVEY: DEC. 5, 8-11 & 19, 2008  
DATE OF PLAT: DEC. 21, 2008

THIS PLAT HAS BEEN CALCULATED FOR CLOSURE AND IS FOUND TO BE ACCURATE.  
LINEAR PRECISION - 1' IN 525,542'