



**740 E. HALL SCHOOL RD.
NORTH PLATTE, NE**



A ranch-style home on the Northern edge of town.

SHANE MAUCH

Sales Associate

Shane's Cell: 308-660-5672

Email: shane@lashleyland.com

PROPERTY HIGHLIGHTS

List Price	\$259,000
Location	740 E. Hall School Rd., North Platte, NE 69101
Legal Description	PITTMAN 3RD REPLAT LOT 2 .964 A.
Acres	.96±

Buyers and Sellers acknowledge all represented acres are based on the County Assessor's records. Buyers acknowledge that they are purchasing a legal description, and acknowledge that fences may or may not be on the property lines.

Taxes - Estimated **\$2,093.70**

Property Summary

740 E Hall School Rd, North Platte, NE

Discover the space and versatility you've been looking for with this 1,876 sq. ft. ranch-style home situated on nearly an acre along the northern edge of North Platte. Offering 4 bedrooms, 2 bathrooms, and two separate living areas, this property provides plenty of room for comfortable living and entertaining.

The spacious kitchen and dining area serve as the heart of the home, while recent updates include new carpet, vinyl flooring, trim, paint, and an updated HVAC system - adding modern comfort and value.

Outside, you'll find an impressive variety of outbuildings with endless possibilities. The property includes a workshop with office space, storage buildings, and a partially framed pole barn on the west side of the lot. A newly poured 50' x 47' concrete pad currently serves as a basketball court but could easily become the foundation for an additional shop, garage, or outbuilding.

Whether you're looking for extra space, room for hobbies, or a property with future potential, this home offers a unique opportunity on the outskirts of town.

Property is being sold as-is.

Schedule your private showing today and see everything this property has to offer!

All information herein is from sources deemed reliable, however the accuracy is not guaranteed by Lashley Land and Recreational Brokers, Inc., seller or agent. Offering is subject to error, omissions, prior sale, price change or withdrawal without notice.

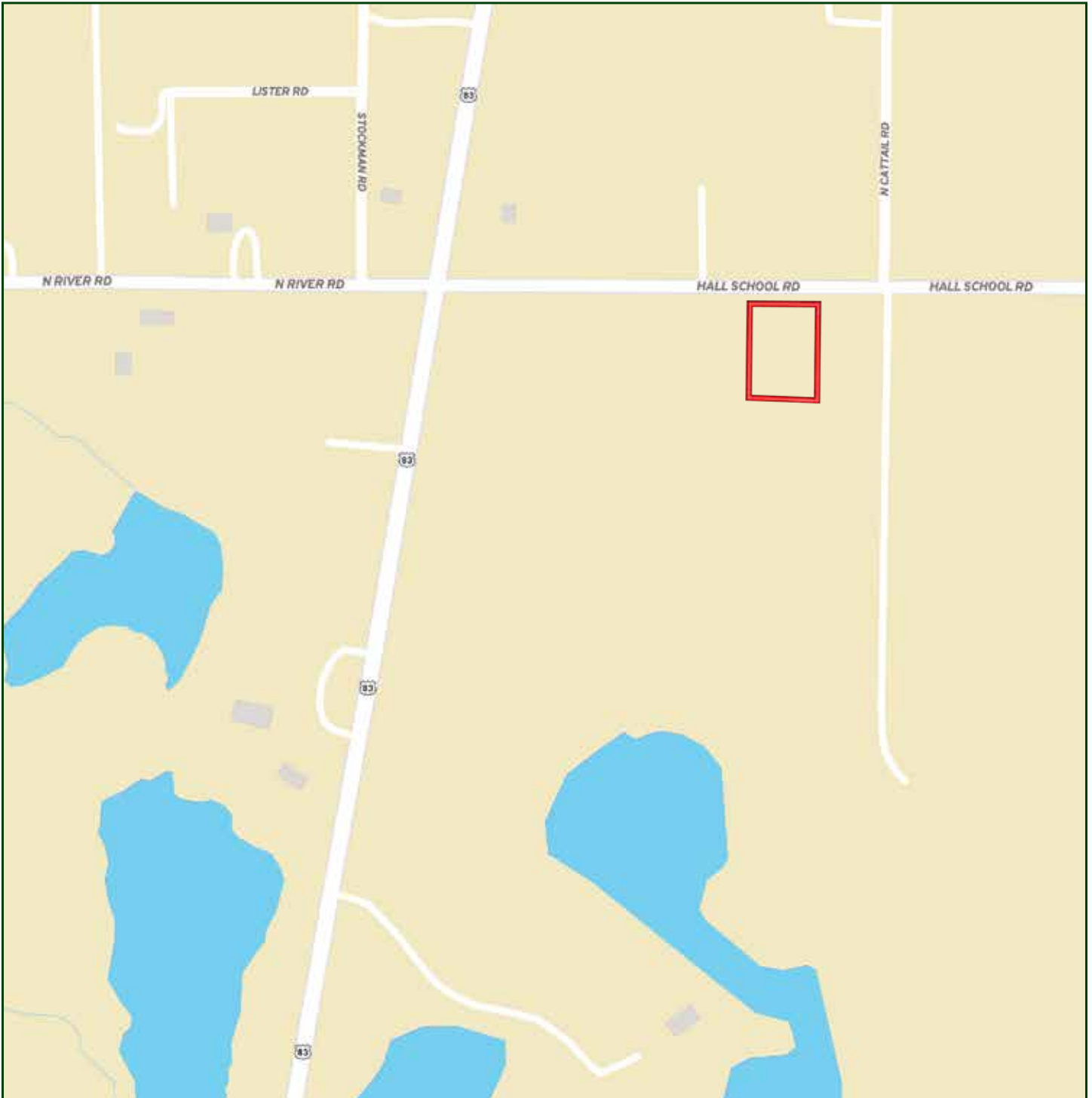
SHANE MAUCH

Sales Associate

Shane's Cell: 308-660-5672

Email: shane@lashleyland.com

LOCATION MAP



Boundary lines are estimates - Map for illustration only

AERIAL MAP



Boundary lines are estimates - Map for illustration only

SHANE MAUCH

Sales Associate

Shane's Cell: 308-660-5672

Email: shane@lashleyland.com

PROPERTY IMAGES

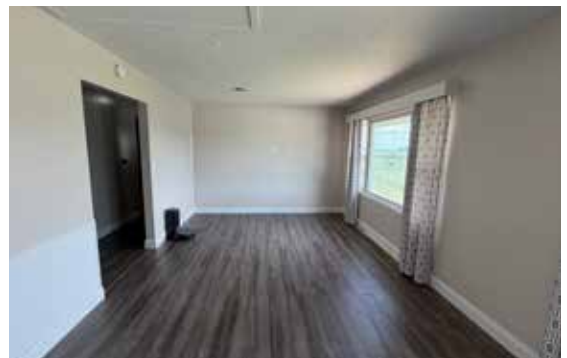


PROPERTY IMAGES



SHANE MAUCH
Sales Associate
Shane's Cell: 308-660-5672
Email: shane@lashleyland.com

PROPERTY IMAGES





NEBRASKA EXPERTS, NATIONAL EXPOSURE.

Contact Information

Office: 308-532-9300

Fax: 308-532-1854

Email: info@lashleyland.com

Website: LashleyLand.com

Mike Lashley, Owner | Broker

Amy Lashley-Johnston, Scott Saults, Skip Marland, Jordan Maassen, April Good, Jon Farley, Tami Timmerman-Lashley, Randy Helms, Bill Grant, Shane Mauch, Jake McQuillen, Brandi Housman, Leala Jimerson, Stephanie Miller, DeAnn Vaughn, Ann Gray, Jake Hopwood, Bryan Cabrera, Lindsey Feuerborn, Robby Uehran, Tom Moss, and Carissa Guy

Like us on Facebook
[Facebook.com/LashleyLand](https://www.facebook.com/LashleyLand)

2218 E. Walker Road • North Platte, NE 69101



SHANE MAUCH

Sales Associate

Shane's Cell: 308-660-5672

Email: shane@lashleyland.com