

# COMMERCIAL OFFICE SPACE Pike County, MS



1350 North Clark Ave  
Magnolia, MS 39652

**\$125,000**

If you are a new business owner looking for a store or an existing business looking for the right expansion opportunity in Pike County, MS, this is it! This 2,000+/- square foot office space is perfect for multiple business types. The possibilities are endless, with several office spaces, a reception area, a kitchen, and ample storage. There is even a drive-up window! If required, a large concrete slab has been placed in the back to add to the structure. A new roof over parts of the building completes this perfect commercial property.

Directions from the intersection of Interstate 55 and MS-48 in Magnolia MS: Exit Interstate 55 at exit 10 and travel east on MS-48 for 1 mile. Turn left at the traffic light and travel for 1.4 miles. The property will be on the right.

[GOOGLE MAP LINK](#)

*Call me today!*

**CLIF CANNON, REALTOR®**  
Clif@TomSmithLand.com  
601.990.5070 office | 601.565.1070 cell



**TomSmithLandandHomes.com**

Information is believed to be accurate but not guaranteed.



*Call me today!*

**CLIF CANNON, REALTOR®**  
Clif@TomSmithLand.com  
601.990.5070 office | 601.565.1070 cell



**TomSmithLandandHomes.com**

Information is believed to be accurate but not guaranteed.





*Call me today!*

**CLIF CANNON, REALTOR™**

Clif@TomSmithLand.com

601.990.5070 office | 601.565.1070 cell

**Tom  
Smith  
LAND AND  
HOMES**

Expect More. Get More.



**TomSmithLandandHomes.com**

Information is believed to be accurate but not guaranteed.



# Aerial Map



*Call me today!*

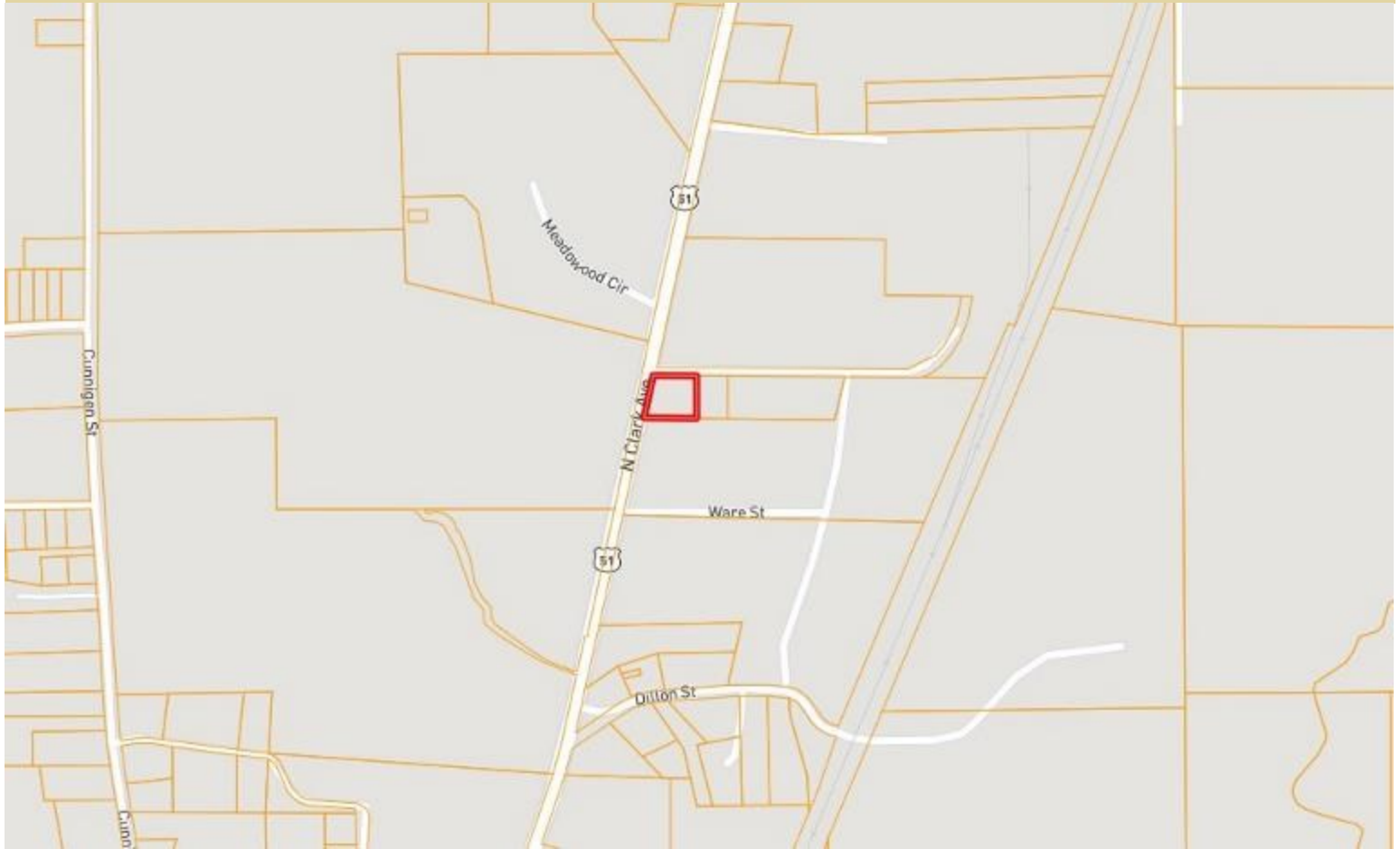
**CLIF CANNON**, REALTOR®  
Clif@TomSmithLand.com  
601.990.5070 office | 601.565.1070 cell



**TomSmithLandandHomes.com**

Information is believed to be accurate but not guaranteed.

# Ownership Map



*Call me today!*

**CLIF CANNON, REALTOR®**

Clif@TomSmithLand.com

601.990.5070 office | 601.565.1070 cell



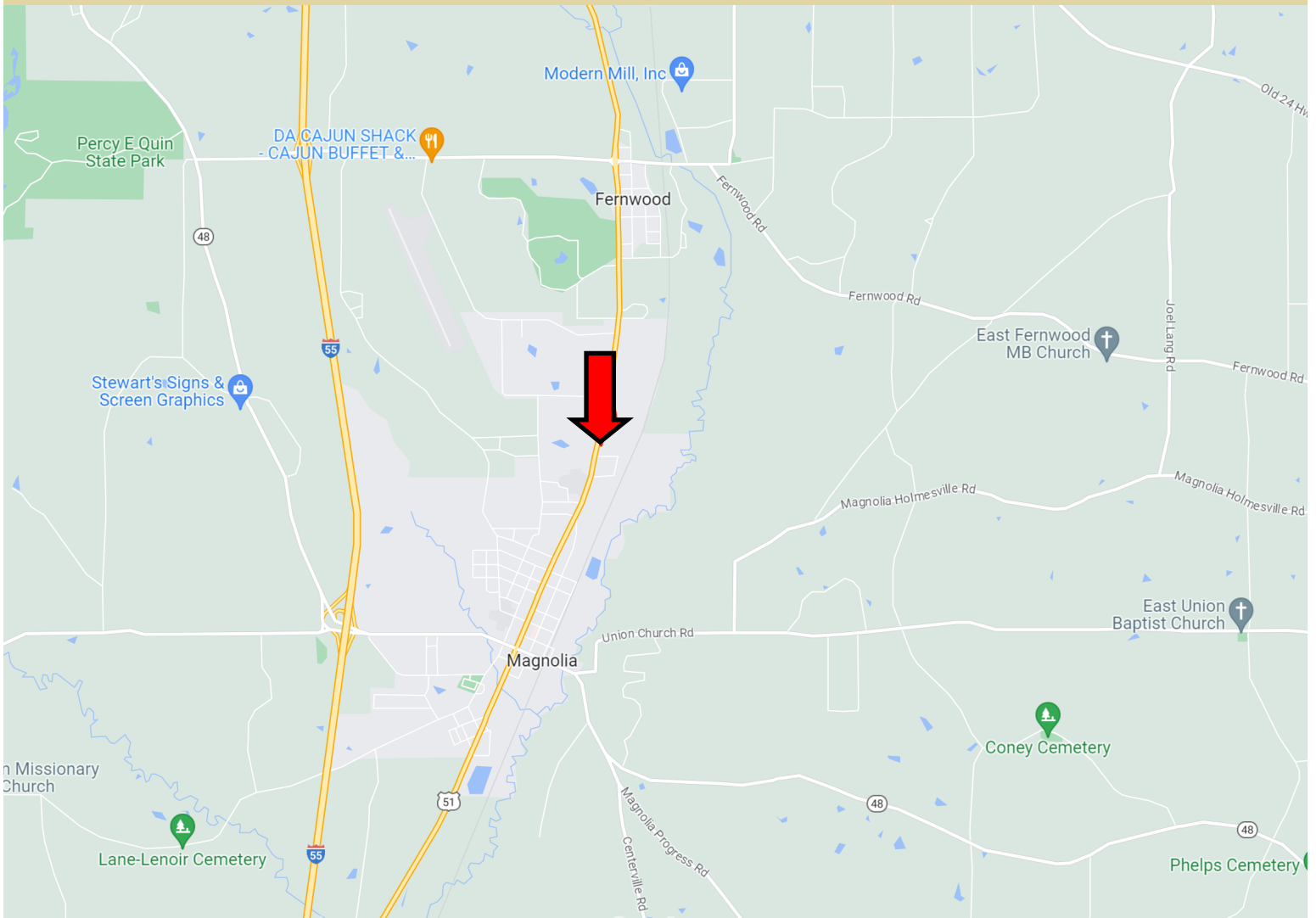
Expect More. Get More.



**TomSmithLandandHomes.com**

Information is believed to be accurate but not guaranteed.

# Directional Map



Directions from the intersection of Interstate 55 and MS-48 in Magnolia MS: Exit Interstate 55 at exit 10 and travel east on MS-48 for 1 mile. Turn left at the traffic light and travel for 1.4 miles. The property will be on the right. [GOOGLE MAP LINK](#)

1350 North Clark Ave  
Magnolia, MS 39652



*Call me today!*

**CLIF CANNON, REALTOR®**  
Clif@TomSmithLand.com  
601.990.5070 office | 601.565.1070 cell



**TomSmithLandandHomes.com**

Information is believed to be accurate but not guaranteed.