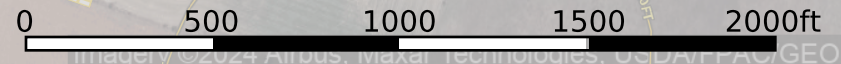
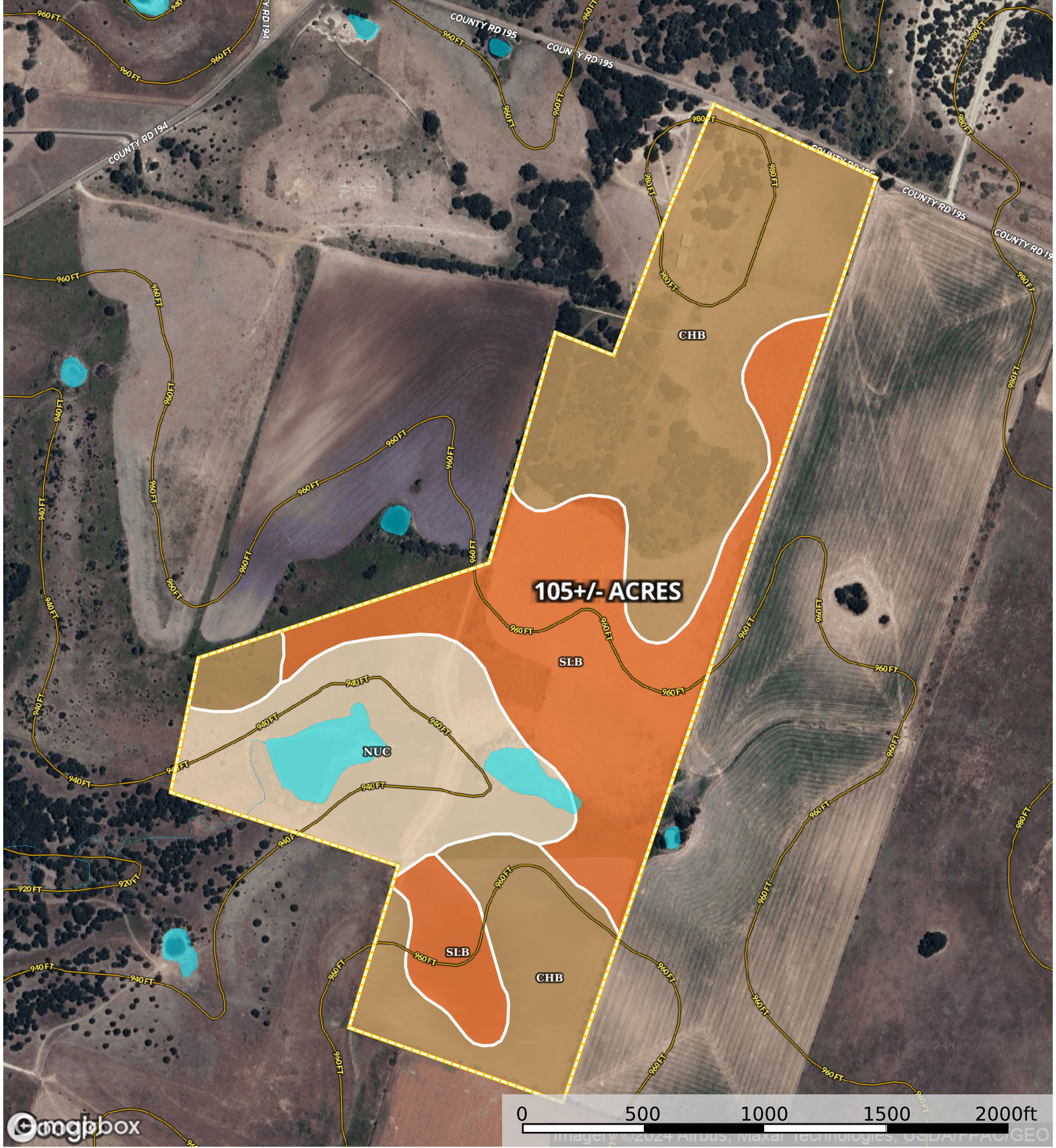


# Alexander - 605 CR 195 (105 Acres with House)

Coryell County, Texas, 105 AC +/-



- Boundary 1
- Stream, Intermittent
- River/Creek
- Water Body

| 📁 Boundary 1 108.86 ac

SOIL CODE	SOIL DESCRIPTION	ACRES	%	CPI	NCCPI	CAP
ChB	Cho clay loam, 1 to 3 percent slopes	49.91	45.85	0	20	4s
SIB	Slidell silty clay, 0 to 2 percent slopes	35.27	32.4	0	42	3e
NuC	Nuff very stony silty clay loam, 2 to 6 percent slopes	23.68	21.75	0	28	6s
TOTALS		108.86(*)	100%	-	28.87	4.11

(\*) Total acres may differ in the second decimal compared to the sum of each acreage soil. This is due to a round error because we only show the acres of each soil with two decimal.

