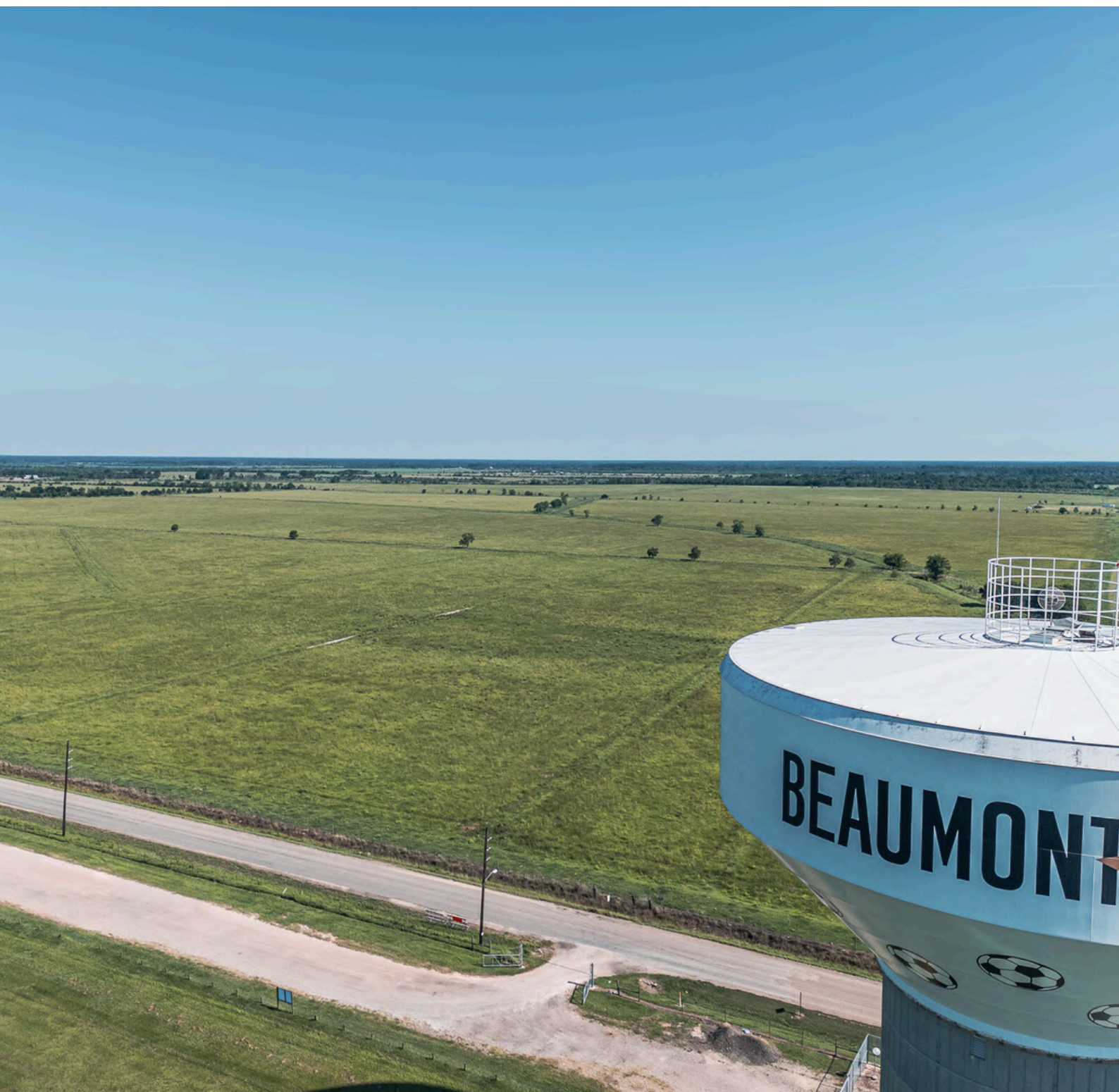




MOCK RANCHES
— kw —
HOUSTON

TBD DISHMAN RD., BEAUMONT, TX 77713
JEFFERSON COUNTY

495 ± ACRES | CONTACT FOR PRICE



TBD DISHMAN RD., BEAUMONT, TX 77713

JEFFERSON COUNTY

PROPERTY DESCRIPTION.

Expansive 495-Acre Property – Versatile Purchase Options Available.

Discover the limitless possibilities with this stunning 495-acre property, now available for purchase either as a whole or in two separate configurations of 290 acres and 205 acres. Whether you're seeking a buy & hold, ready to go development opportunities, or a savvy investment, this vast expanse of land offers unmatched potential.

KEY FEATURES:

- **Total Area:** 495 acres of prime real estate.
- **Flexible Purchase Options:** Available as a complete 495-acre tract or in two separate parcels of 290 acres and 205 acres.
- **Frontage:** 4,130 feet of Dishman Rd frontage
- **Floodplain:** No floodplain issues.
- **Location:** Situated just outside the city limits of Beaumont, TX.
- **Development Potential:** Perfect location for residential development.
- **Accessibility:** Located within 10 minutes of major retail and dining options.
- **Economic Growth:** The Southeast Texas & Southwest Louisiana regions are undergoing \$220 billion in expansion projects, with an estimated 85,800 workers needed.
- **Tax Benefits:** Currently taxed under a 1-d-1 Open Space Valuation (Agriculture)
- **Utilities:** Essential utilities are available.
- **Ready for Development:** All essential utilities are available, making this property ready for immediate development.



All information is deemed reliable, but is not warranted by MOCK RANCHES GROUP. All information is subject to change without prior notice.

MOCK RANCHES | FOR SALE

TBD DISHMAN RD., BEAUMONT, TX 77713

JEFFERSON COUNTY



PROPERTY TYPE:

Acreage, Cattle Ranch, Commercial Acreage, Equestrian Property, Farm



All information is deemed reliable, but is not warranted by MOCK RANCHES GROUP. All information is subject to change without prior notice.

MOCK RANCHES | FOR SALE

TBD DISHMAN RD., BEAUMONT, TX 77713

JEFFERSON COUNTY



PROPERTY FEATURES:

Barn, Corrals, Development Potential, Electricity, Fishing, Hwy-County Rd Frontage, Irrigated



All information is deemed reliable, but is not warranted by MOCK RANCHES GROUP. All information is subject to change without prior notice.

TBD DISHMAN RD., BEAUMONT, TX 77713

JEFFERSON COUNTY

CURRENT PROJECTS AND MANPOWER NEEDED

1. BEAUMONT, TX

AMOUNT: \$41 BILLION

MANPOWER: 11,500

2. PORT ARTHUR, TX

AMOUNT: \$36 BILLION

MANPOWER: 11,800

3. NEDERLAND, TX

AMOUNT: \$3.7 BILLION

MANPOWER: 4,000

4. SABINE PASS, TX

AMOUNT: \$6 BILLION

MANPOWER: 4,000

5. ORANGE, TX

AMOUNT: \$8.5 BILLION

MANPOWER: 7,000

6. VIDOR, TX

AMOUNT: \$6 BILLION

MANPOWER: 3,000

7. BRIDGE CITY, TX

AMOUNT: \$1.7 BILLION

MANPOWER: 1,500

8. AREA WIDE TEXAS PROJECTS

AMOUNT: \$52 BILLION

MANPOWER: 9,000

9. SOUTHWEST LOUISIANA PROJECTS

AMOUNT: \$65 BILLION

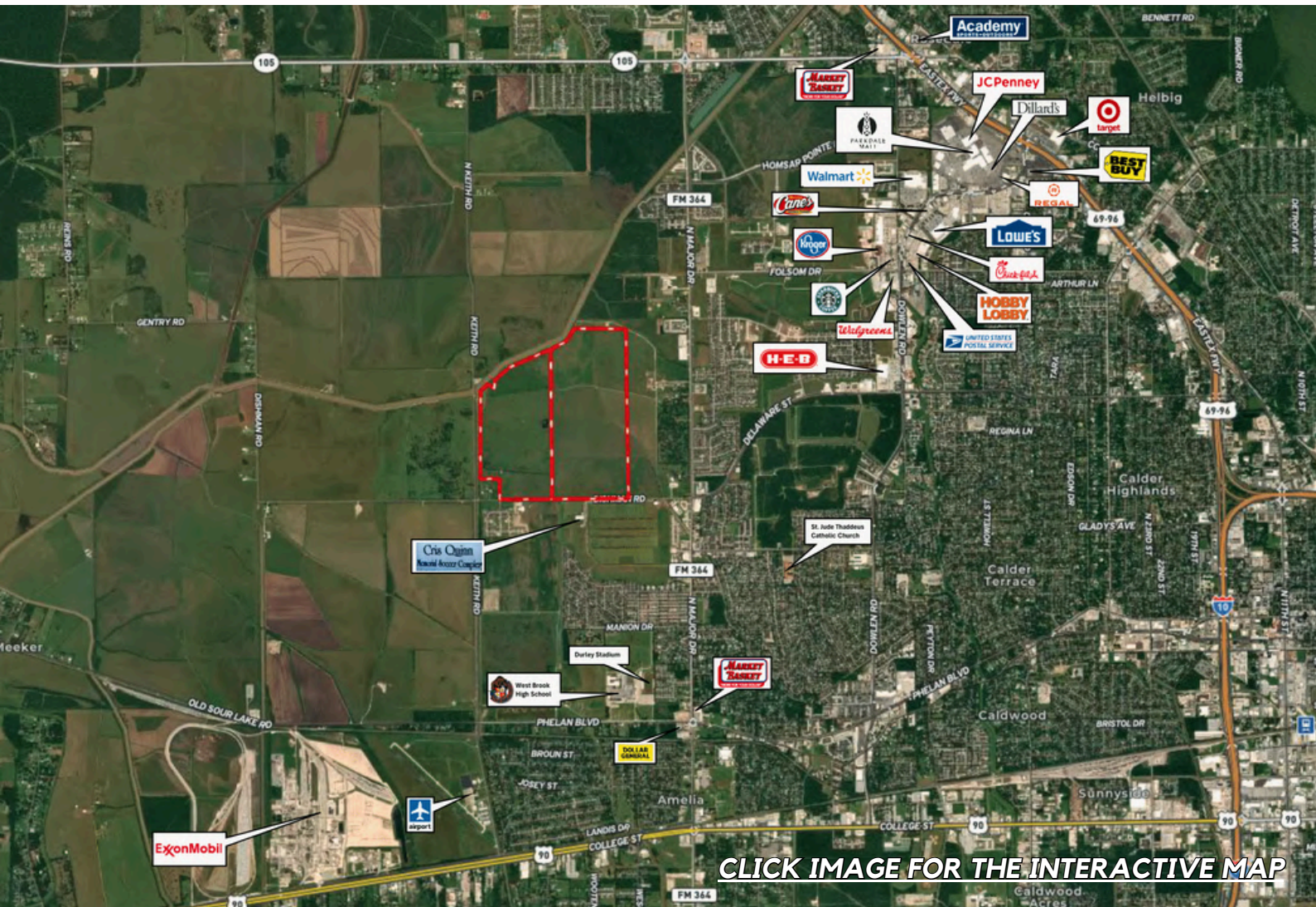
MANPOWER: 38,000

TOTAL AMOUNT: \$220 BILLION
TOTAL MANPOWER: 85,800

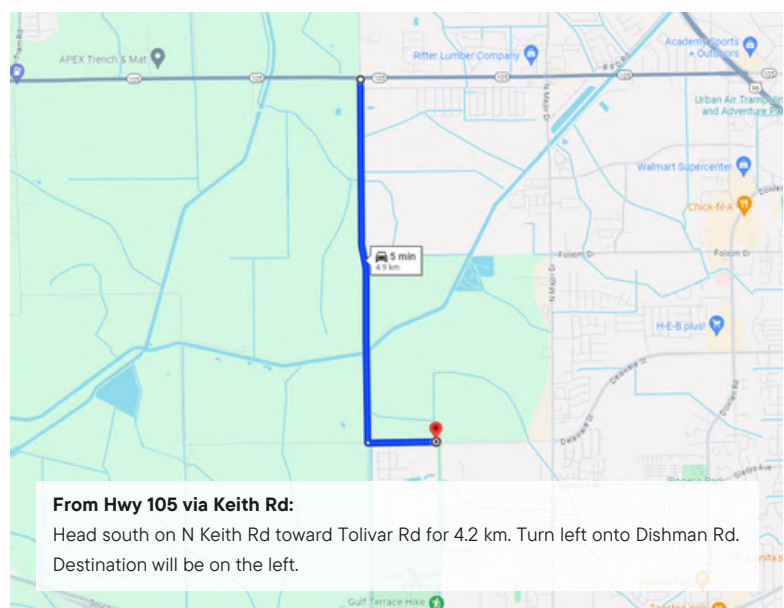
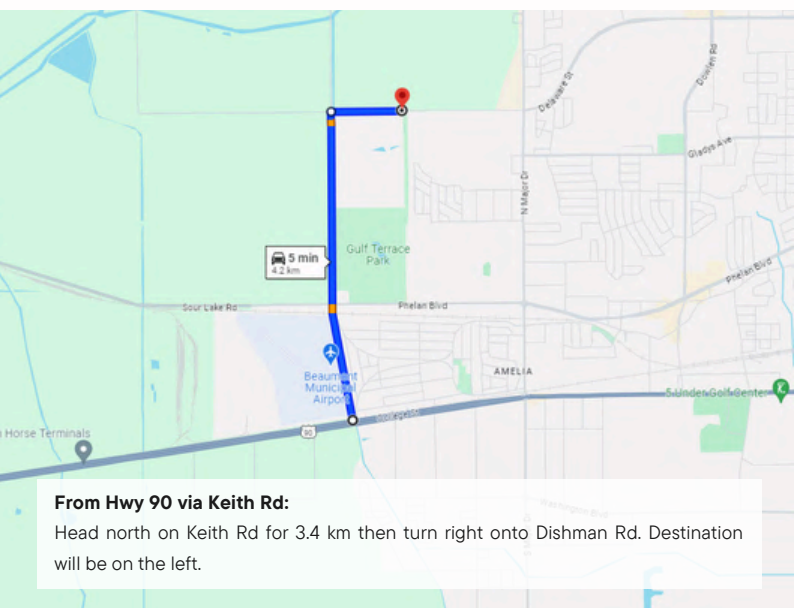
All information is deemed reliable, but is not warranted by MOCK RANCHES GROUP. All information is subject to change without prior notice.

TBD DISHMAN RD., BEAUMONT, TX 77713

JEFFERSON COUNTY



[CLICK IMAGE FOR THE INTERACTIVE MAP](#)



All information is deemed reliable, but is not warranted by MOCK RANCHES GROUP. All information is subject to change without prior notice.

CHAD ANDRUS, ALC

Accredited Land Specialist

chadandrus@mockranches.com

832-402-9211

www.mockranches.com



MOCK RANCHES
— kw —
HOUSTON



All materials and information received or derived from Mock Ranches its directors, officers, agents, advisors, affiliates and/or any third party sources are provided without representation or warranty as to completeness, veracity, or accuracy, condition of the property, compliance or lack of compliance with applicable governmental requirements, developability or suitability, financial performance of the property, projected financial performance of the property for any party's intended use or any and all other matters. Neither Mock Ranches, its directors, officers, agents, advisors, or affiliates makes any representation or warranty, express or implied, as to accuracy or completeness of the materials or information provided, derived, or received. Materials and information from any source, whether written or verbal, that may be furnished for review are not a substitute for a party's active conduct of its own due diligence to determine these and other matters of significance to such party. Mock Ranches will not investigate or verify any such matters or conduct due diligence for a party unless otherwise agreed in writing. EACH PARTY SHALL CONDUCT ITS OWN INDEPENDENT INVESTIGATION AND DUE DILIGENCE.

Ranch. financing made simple



WINNIE OFFICE

🏠 NMLS493828 | 409.400.4066 | capitalfarmcredit.com



Anthony Vaughan

Disclaimer: Although the Broker or Agent has used reasonable care in obtaining data, this material is submitted without representation, warranty, or guarantees, and is subject to errors and omissions. Moreover, all information is subject to changes by the owner as to price or terms, to prior lease, to withdrawal of the property from the market, and to other events beyond the control of the Broker.



MOCK RANCHES
— kw —
HOUSTON