

Charming 7± Acre Multi-Dwelling Property

589 Simpson Hwy 28, Pinola, MS



This 7± acre property in Simpson County, MS, features two homes set against a picturesque backdrop of lush pasture land, offering tranquility and functionality. The location provides the peace of the countryside while remaining conveniently close to local amenities and major roads. The first home is a snug one-bedroom, one-bathroom manufactured house, great for small families or renting out. The second home has a big main bedroom with a separate bathroom, plus two extra rooms for family or guests. There's a lovely covered porch where you can relax and enjoy the views of the countryside. This place is also a wise investment opportunity, with the potential to rent out both homes or even build more. It's a slice of country paradise waiting for someone to make it their own in Simpson County, MS. Whether you're looking for a peaceful family home or a promising investment, this property offers both. Call Clay or David to schedule your showing today!



CLAY SIMMONS
REALTOR®

O: 601.898.2772 | C: 601.672.6864
Clay@TomSmithHomes.com



Expect More. Get More.



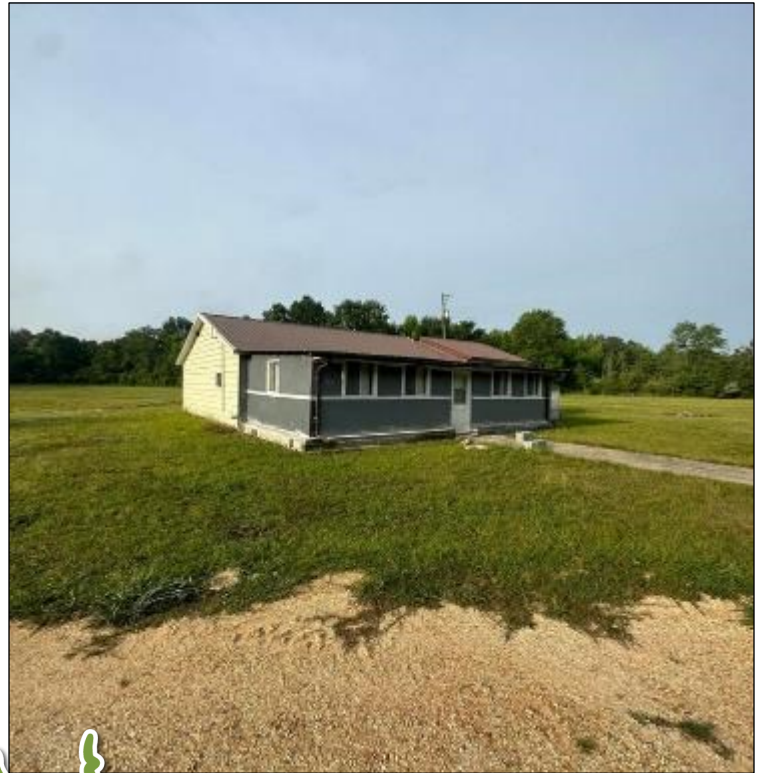
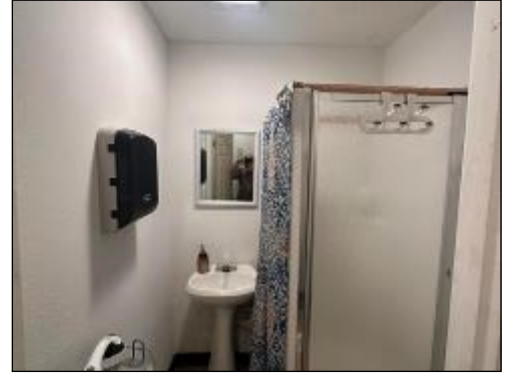
DAVID BELDEN
REALTOR®

O: 601.898.2772 | C: 601.415.3884
DBelden@TomSmithLand.com

TomSmithLandandHomes.com

Information is believed to be accurate but not guaranteed.





CLAY SIMMONS
REALTOR®

O: 601.898.2772 | C: 601.672.6864
Clay@TomSmithHomes.com



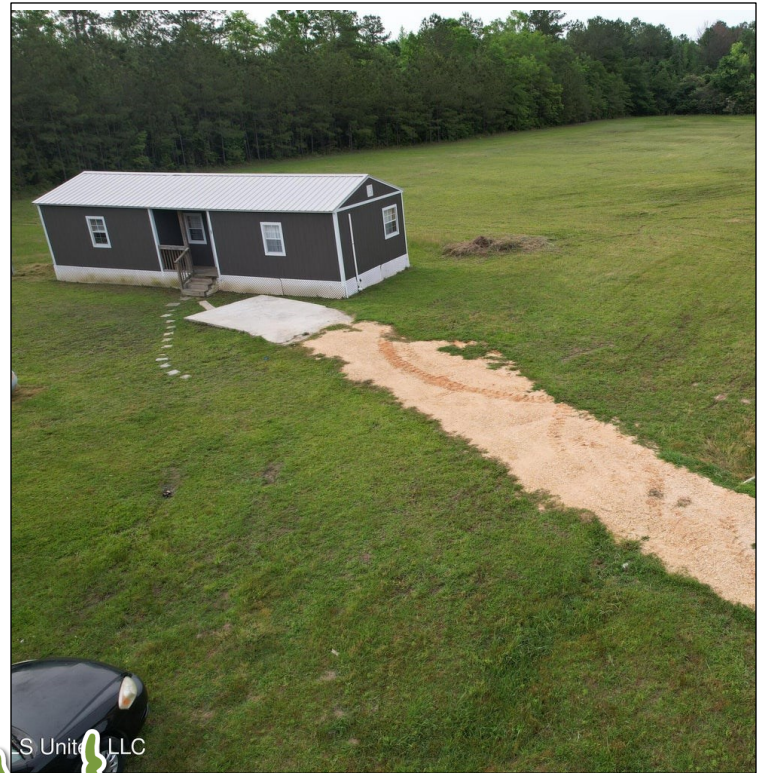
DAVID BELDEN
REALTOR®

O: 601.898.2772 | C: 601.415.3884
DBelden@TomSmithLand.com

TomSmithLandandHomes.com

Information is believed to be accurate but not guaranteed.





CLAY SIMMONS
REALTOR®

O: 601.898.2772 | C: 601.672.6864
Clay@TomSmithHomes.com



Expect More. Get More.

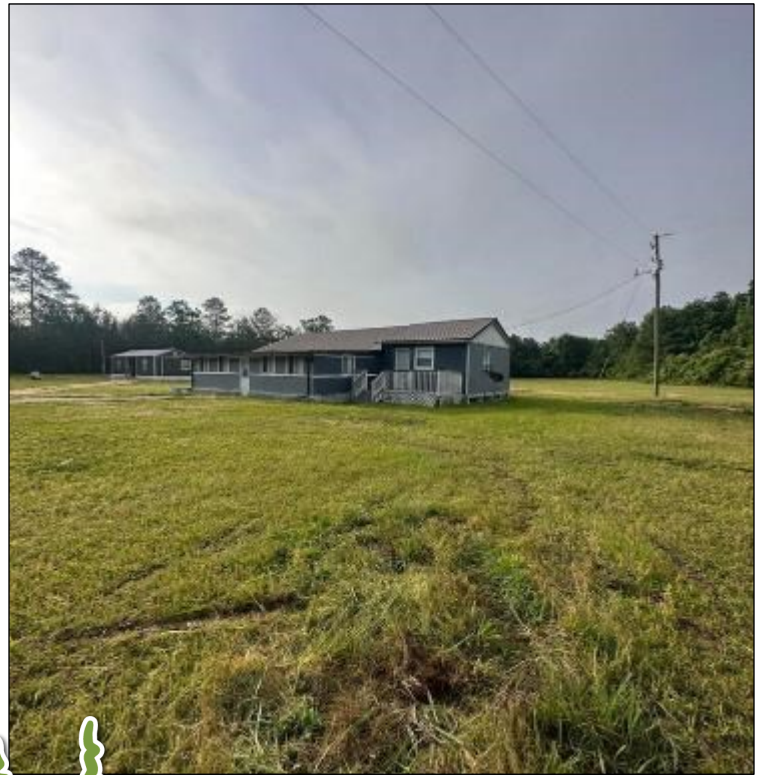
DAVID BELDEN
REALTOR®

O: 601.898.2772 | C: 601.415.3884
DBelden@TomSmithLand.com

TomSmithLandandHomes.com

Information is believed to be accurate but not guaranteed.





CLAY SIMMONS
REALTOR®

O: 601.898.2772 | C: 601.672.6864
Clay@TomSmithHomes.com



DAVID BELDEN
REALTOR®

O: 601.898.2772 | C: 601.415.3884
DBelden@TomSmithLand.com

TomSmithLandandHomes.com

Information is believed to be accurate but not guaranteed.



Aerial Map



[CLICK HERE FOR AN INTERACTIVE MAP](#)

CLAY SIMMONS
REALTOR®

O: 601.898.2772 | C: 601.672.6864
Clay@TomSmithHomes.com



DAVID BELDEN
REALTOR®

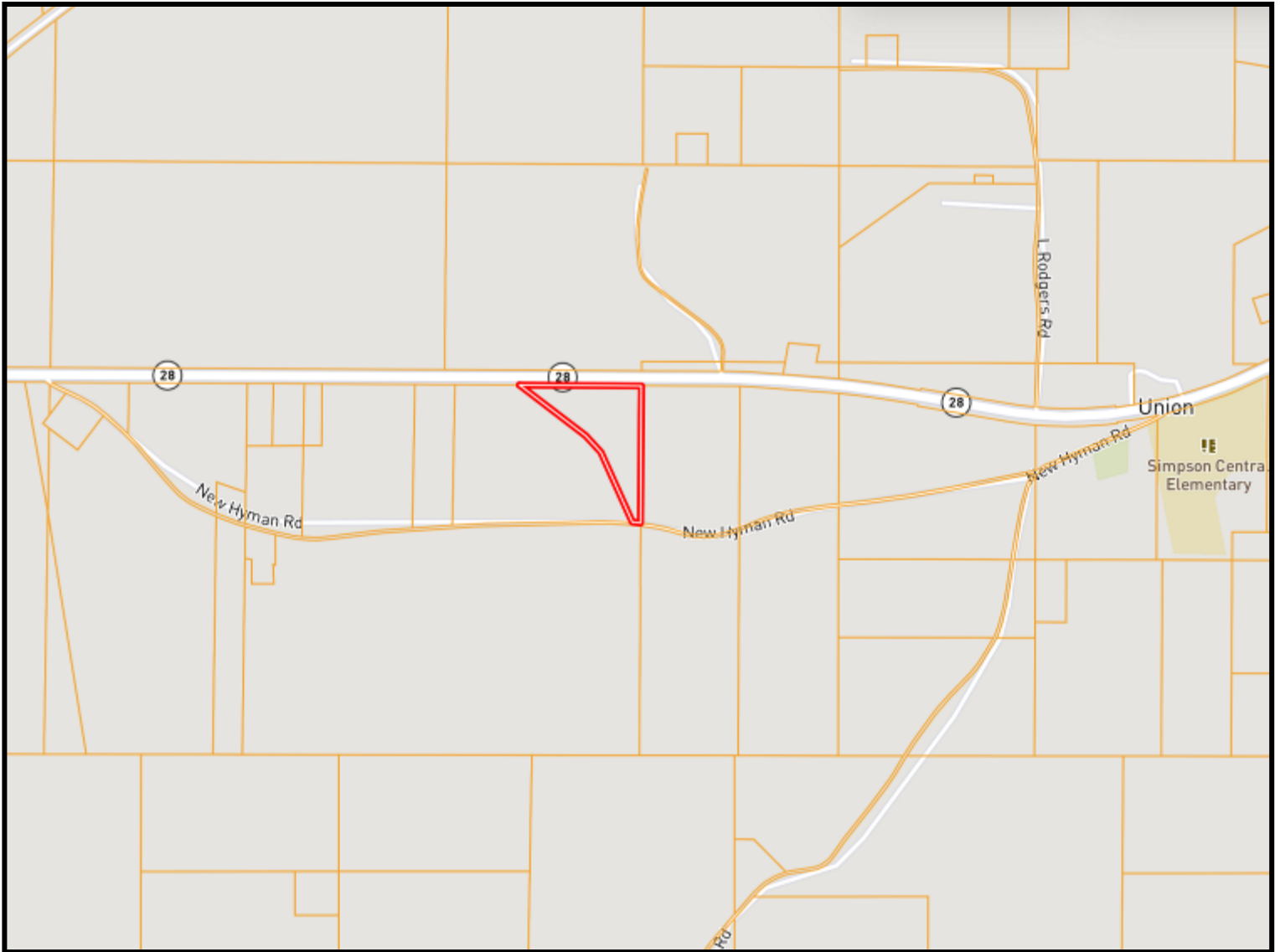
O: 601.898.2772 | C: 601.415.3884
DBelden@TomSmithLand.com

TomSmithLandandHomes.com

Information is believed to be accurate but not guaranteed.

100%
2011-2024
BEST
BROKERAGES

Ownership Map



CLAY SIMMONS
REALTOR®

O: 601.898.2772 | C: 601.672.6864
Clay@TomSmithHomes.com



DAVID BELDEN
REALTOR®

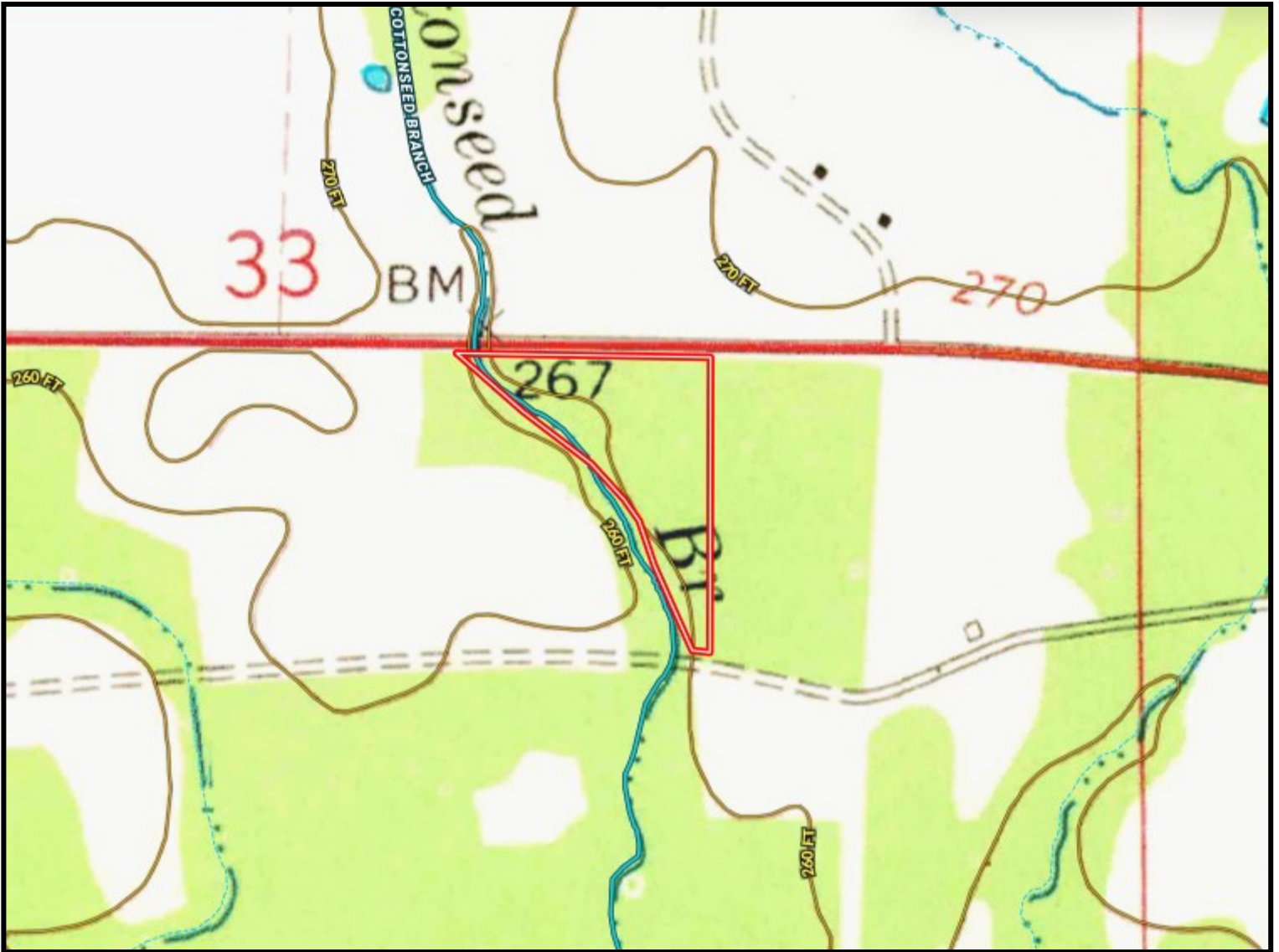
O: 601.898.2772 | C: 601.415.3884
DBelden@TomSmithLand.com

TomSmithLandandHomes.com

Information is believed to be accurate but not guaranteed.



Topography Map



CLAY SIMMONS
REALTOR®

O: 601.898.2772 | C: 601.672.6864
Clay@TomSmithHomes.com



DAVID BELDEN
REALTOR®

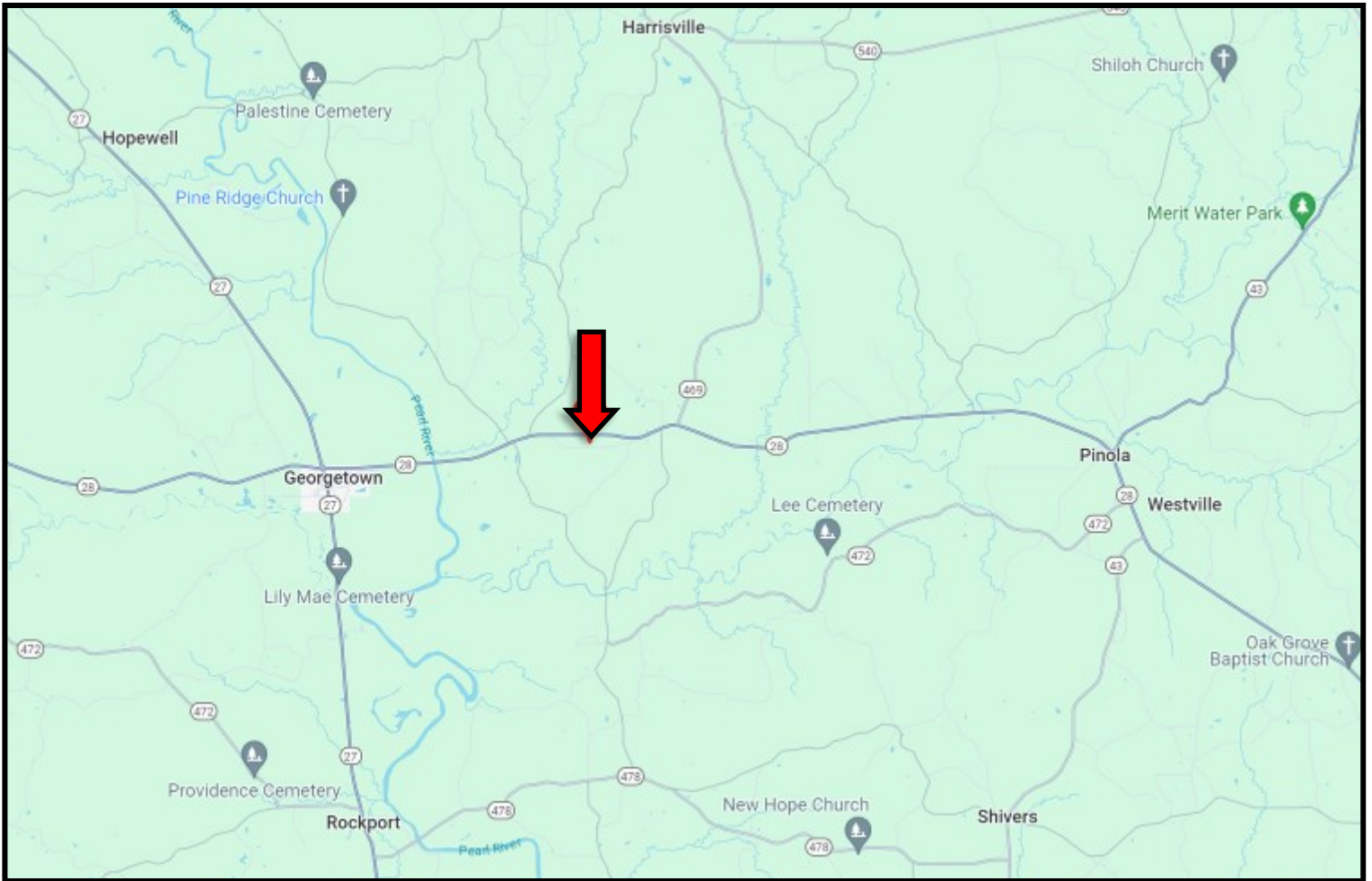
O: 601.898.2772 | C: 601.415.3884
DBelden@TomSmithLand.com

TomSmithLandandHomes.com

Information is believed to be accurate but not guaranteed.



Directional Map



Directions from Hwy 28 and Hwy 43 in Pinola, MS: Travel Hwy 28W for 8.4 miles. The property entrance will be on the left.

589 Simpson Hwy 28 Pinola, MS 39149—Click for Google Map Link



CLAY SIMMONS
REALTOR®

O: 601.898.2772 | C: 601.672.6864
Clay@TomSmithHomes.com



Expect More. Get More.



DAVID BELDEN
REALTOR®

O: 601.898.2772 | C: 601.415.3884
DBelden@TomSmithLand.com

TomSmithLandandHomes.com

Information is believed to be accurate but not guaranteed.

