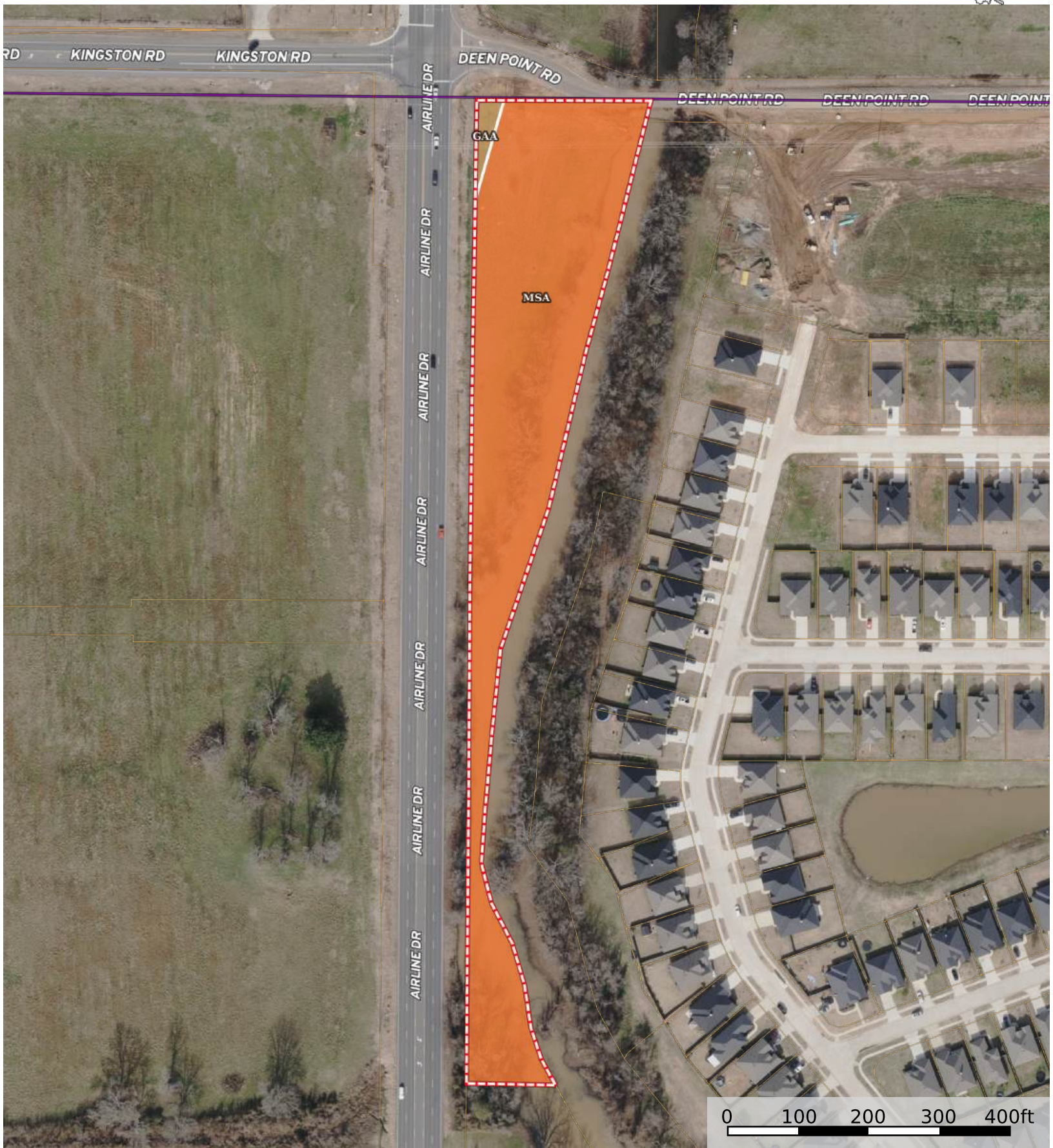


Deen Point Airline Corner

Bossier Parish, Louisiana, 3.45 AC +/-



Boundary



 Boundary 3.45 ac

SOIL CODE	SOIL DESCRIPTION	ACRES	%	CPI	NCCPI	CAP
MsA	Moreland clay, 0 to 1 percent slopes, frequently flooded	3.39	97.98	0	27	5w
GaA	Gallion silt loam, 0 to 1 percent slopes	0.06	1.73	0	82	1
TOTALS		3.45(*)	100%	-	27.88	4.93

(*) Total acres may differ in the second decimal compared to the sum of each acreage soil. This is due to a round error because we only show the acres of each soil with two decimal.

