

# Secluded Jasper County Retreat

*35.53± Acres with a Custom Lodge*

*\$795,000*



- 35.53± ACRE ONE-OF-A-KIND JASPER COUNTY RETREAT
- LOCATED ON CR 1830, ONLY MINUTES FROM ROSE HILL, MS
- CUSTOM-BUILT 4,200 SF LODGE WITH THREE BEDROOMS, THREE FULL BATHS
- 2-STORY WRAP-AROUND PORCH WITH SERENE VIEWS
- OLD CHICAGO BRICK FLOORING, BRAZILIAN MARBLE COUNTERTOPS, CROWN MOLDING
- CEDAR AND BLACK WALNUT STONE BRICK FIREPLACE
- MODERN AMENITIES, INCLUDING SPRAY FOAM INSULATION
- 32 FOOT, 1± ACRE POND STOCKED WITH BREAM AND BASS
- FOOD PLOT IN PLACE
- 30X40 SHOP
- CHICKEN COOP
- A BLEND OF LUXURY AND PRIVACY



**DALE WILDS**  
REALTOR®

O: 601.898.2772 | C: 662.715.7109  
Dale@TomSmithLand.com



Expect More. Get More.



**DAVID BELDEN**  
ALC®, REALTOR®

O: 601.898.2772 | C: 601.415.3884  
DBelden@TomSmithLand.com

**TomSmithLandandHomes.com**

Information is believed to be accurate but not guaranteed.





Introducing a charming retreat in the heart of Jasper County—a custom-built lodge spanning 4,200 square feet on a spacious 35.53± acre tract. The cozy residence features three bedrooms and three full baths with meticulous attention to detail. Enjoy the outdoors on the 2-story wrap-around porch, offering serene views. As you enter, you'll discover Old Chicago brick flooring,

Brazilian marble countertops, 5-inch crown molding, and a magnificent cedar and black walnut stone brick fireplace, creating an ambiance of rustic elegance.

The lodge was designed for comfort and efficiency, and includes modern amenities like spray foam insulation. A 32 foot, 1± acre pond, stocked with bream and bass, adds to the property's appeal, providing a peaceful escape for fishermen. A food plot is in place and allows you to observe deer or turkey from your porch. Privacy is vital in this secluded haven, making it ideal for those seeking tranquility and a connection with nature. The property also includes a 30x40 shop and a convenient chicken coop.

Don't miss the chance to make this property your home—a blend of luxury, privacy, and natural beauty in Jasper County. For a private showing, David or Dale today!

*48 Hour Notice for Showings; Qualified Buyers Only*

**DALE WILDS**  
REALTOR®

O: 601.898.2772 | C: 662.715.7109  
Dale@TomSmithLand.com



**DAVID BELDEN**  
ALC®, REALTOR®

O: 601.898.2772 | C: 601.415.3884  
DBelden@TomSmithLand.com

**TomSmithLandandHomes.com**

Information is believed to be accurate but not guaranteed.





**DALE WILDS**  
REALTOR®

O: 601.898.2772 | C: 662.715.7109  
Dale@TomSmithLand.com



**DAVID BELDEN**  
ALC®, REALTOR®

O: 601.898.2772 | C: 601.415.3884  
DBelden@TomSmithLand.com

**TomSmithLandandHomes.com**

Information is believed to be accurate but not guaranteed.





**DALE WILDS**  
REALTOR®

O: 601.898.2772 | C: 662.715.7109  
Dale@TomSmithLand.com



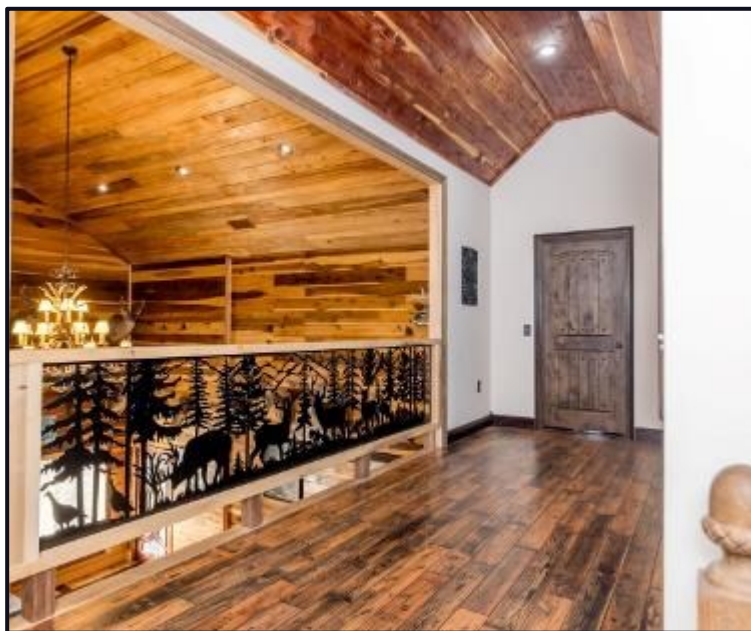
**DAVID BELDEN**  
ALC®, REALTOR®

O: 601.898.2772 | C: 601.415.3884  
DBelden@TomSmithLand.com

**TomSmithLandandHomes.com**

Information is believed to be accurate but not guaranteed.





**DALE WILDS**  
REALTOR®

O: 601.898.2772 | C: 662.715.7109  
Dale@TomSmithLand.com



**DAVID BELDEN**  
ALC®, REALTOR®

O: 601.898.2772 | C: 601.415.3884  
DBelden@TomSmithLand.com

**TomSmithLandandHomes.com**

Information is believed to be accurate but not guaranteed.





**DALE WILDS**  
REALTOR®

O: 601.898.2772 | C: 662.715.7109  
Dale@TomSmithLand.com



**DAVID BELDEN**  
ALC®, REALTOR®

O: 601.898.2772 | C: 601.415.3884  
DBelden@TomSmithLand.com

**TomSmithLandandHomes.com**

Information is believed to be accurate but not guaranteed.



# Aerial Map



[Click Here for an Interactive Map](#)

**DALE WILDS**  
REALTOR®

O: 601.898.2772 | C: 662.715.7109  
Dale@TomSmithLand.com



**DAVID BELDEN**  
ALC®, REALTOR®

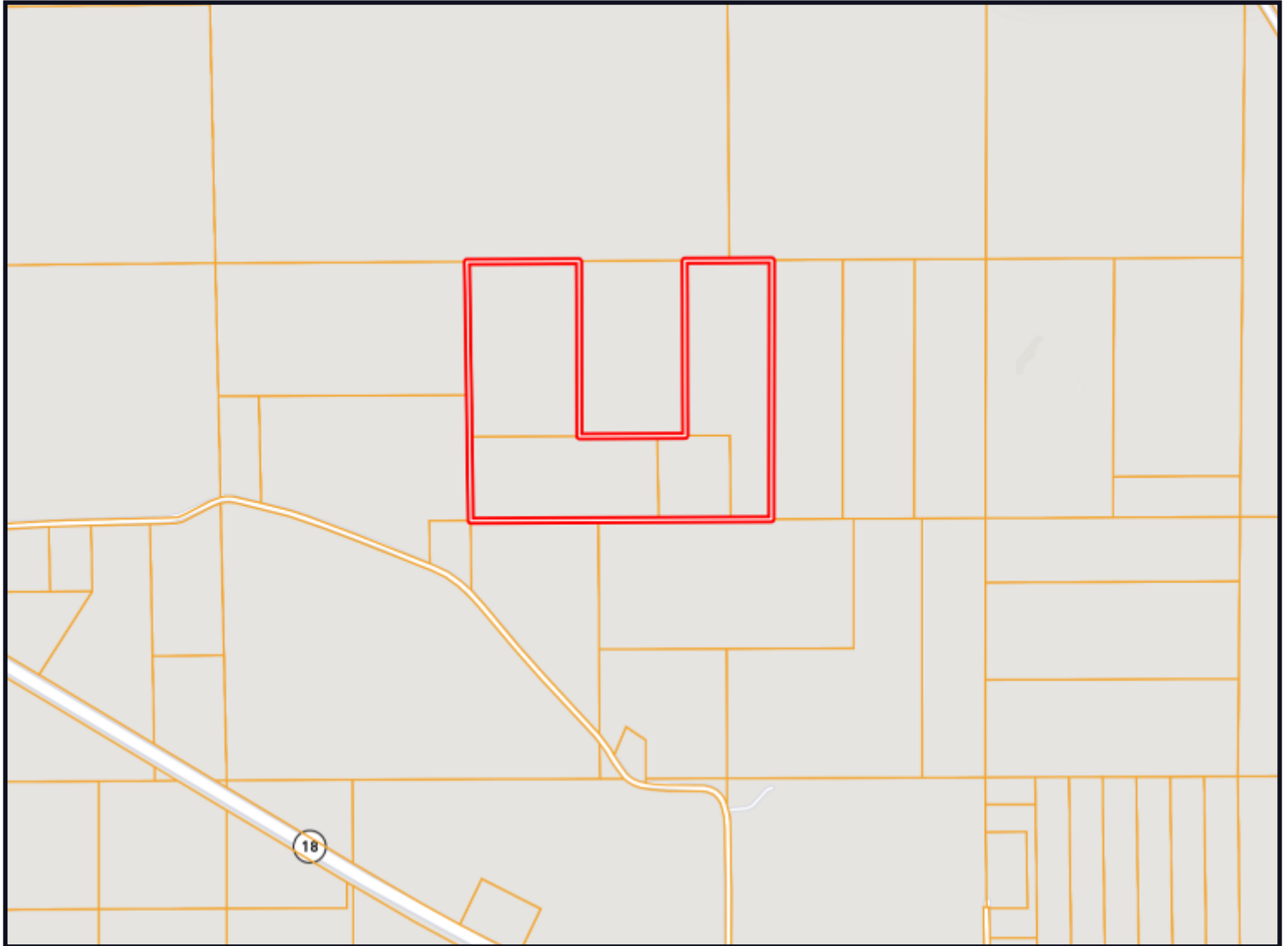
O: 601.898.2772 | C: 601.415.3884  
DBelden@TomSmithLand.com

**TomSmithLandandHomes.com**

Information is believed to be accurate but not guaranteed.



# Ownership Map



**DALE WILDS**  
REALTOR®

O: 601.898.2772 | C: 662.715.7109  
Dale@TomSmithLand.com



**DAVID BELDEN**  
ALC®, REALTOR®

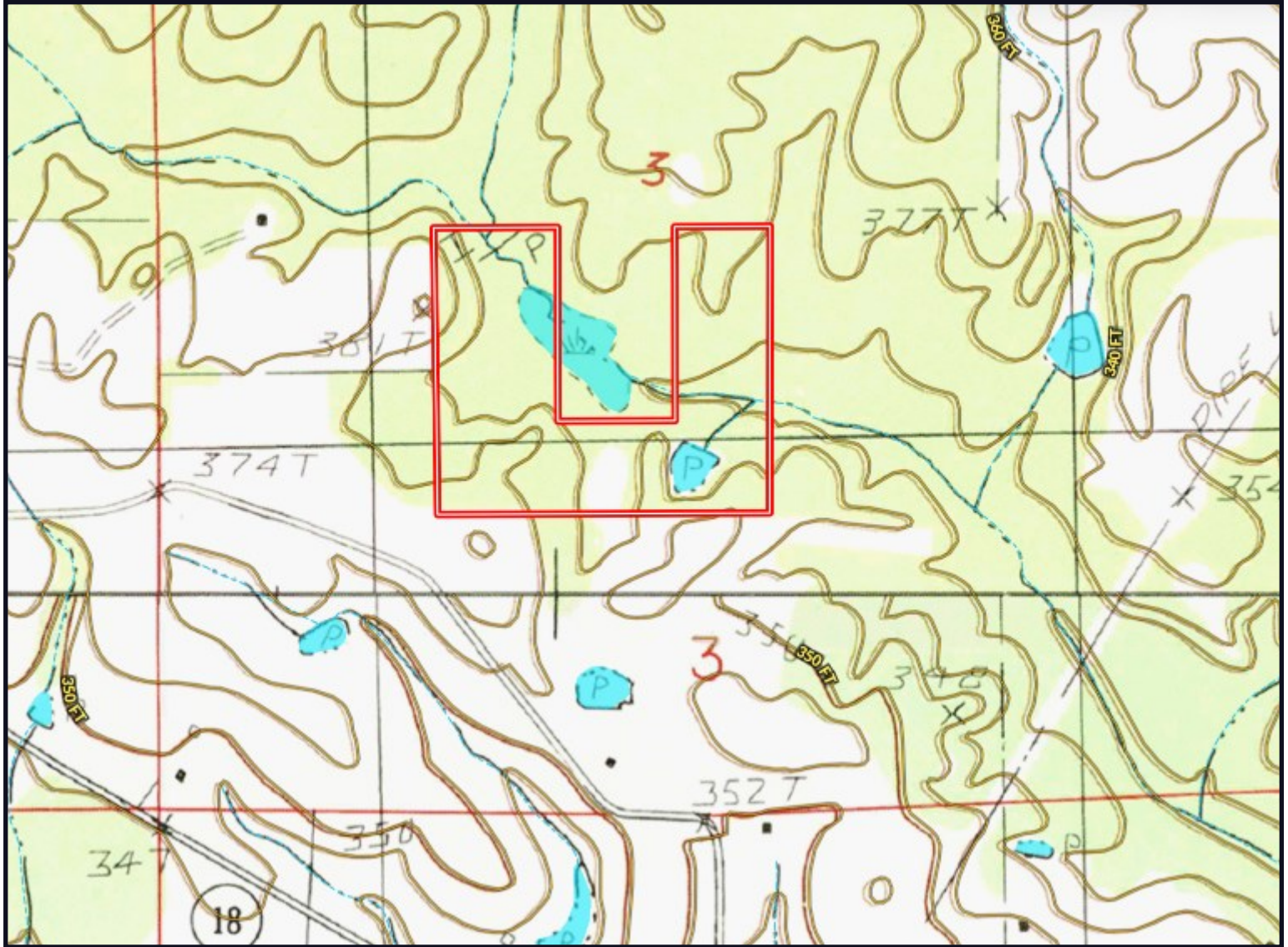
O: 601.898.2772 | C: 601.415.3884  
DBelden@TomSmithLand.com

**TomSmithLandandHomes.com**

Information is believed to be accurate but not guaranteed.



# Topography Map



**DALE WILDS**  
REALTOR®

O: 601.898.2772 | C: 662.715.7109  
Dale@TomSmithLand.com



**DAVID BELDEN**  
ALC®, REALTOR®

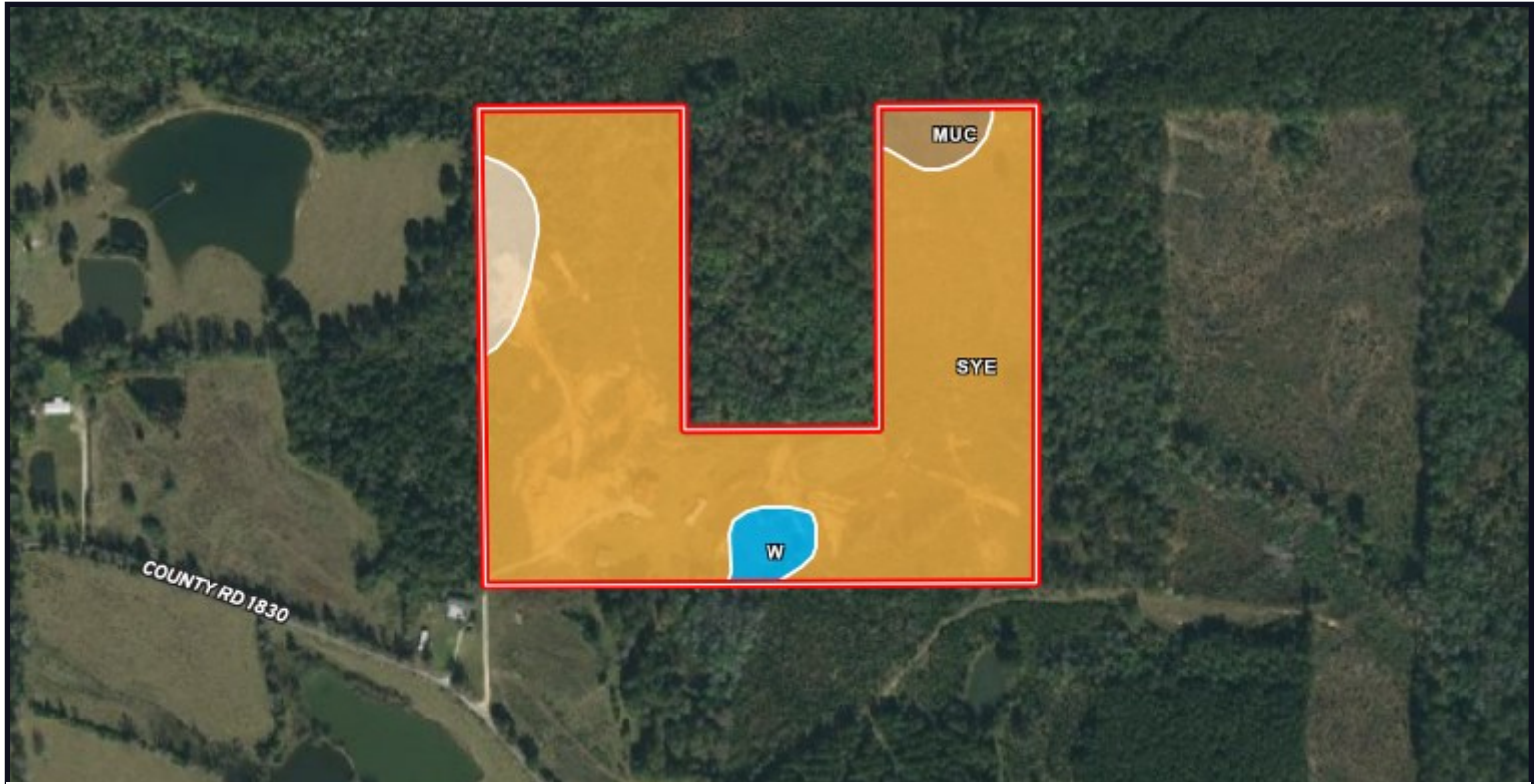
O: 601.898.2772 | C: 601.415.3884  
DBelden@TomSmithLand.com

**TomSmithLandandHomes.com**

Information is believed to be accurate but not guaranteed.



# Soil Map



SOIL CODE	SOIL DESCRIPTION	ACRES	%	CPI	NCCPI	CAP
SYE	Sweatman-Smithdale association, hilly	32.66	90.02	0	52	7e
SaB	Savannah fine sandy loam, 2 to 5 percent slopes	1.54	4.24	0	54	2e
MuC	McLaurin loamy sand, 5 to 8 percent slopes	1.06	2.92	0	54	3e
W	Water	1.03	2.84	0	-	-

**DALE WILDS**  
REALTOR®

O: 601.898.2772 | C: 662.715.7109  
Dale@TomSmithLand.com



**DAVID BELDEN**  
ALC®, REALTOR®

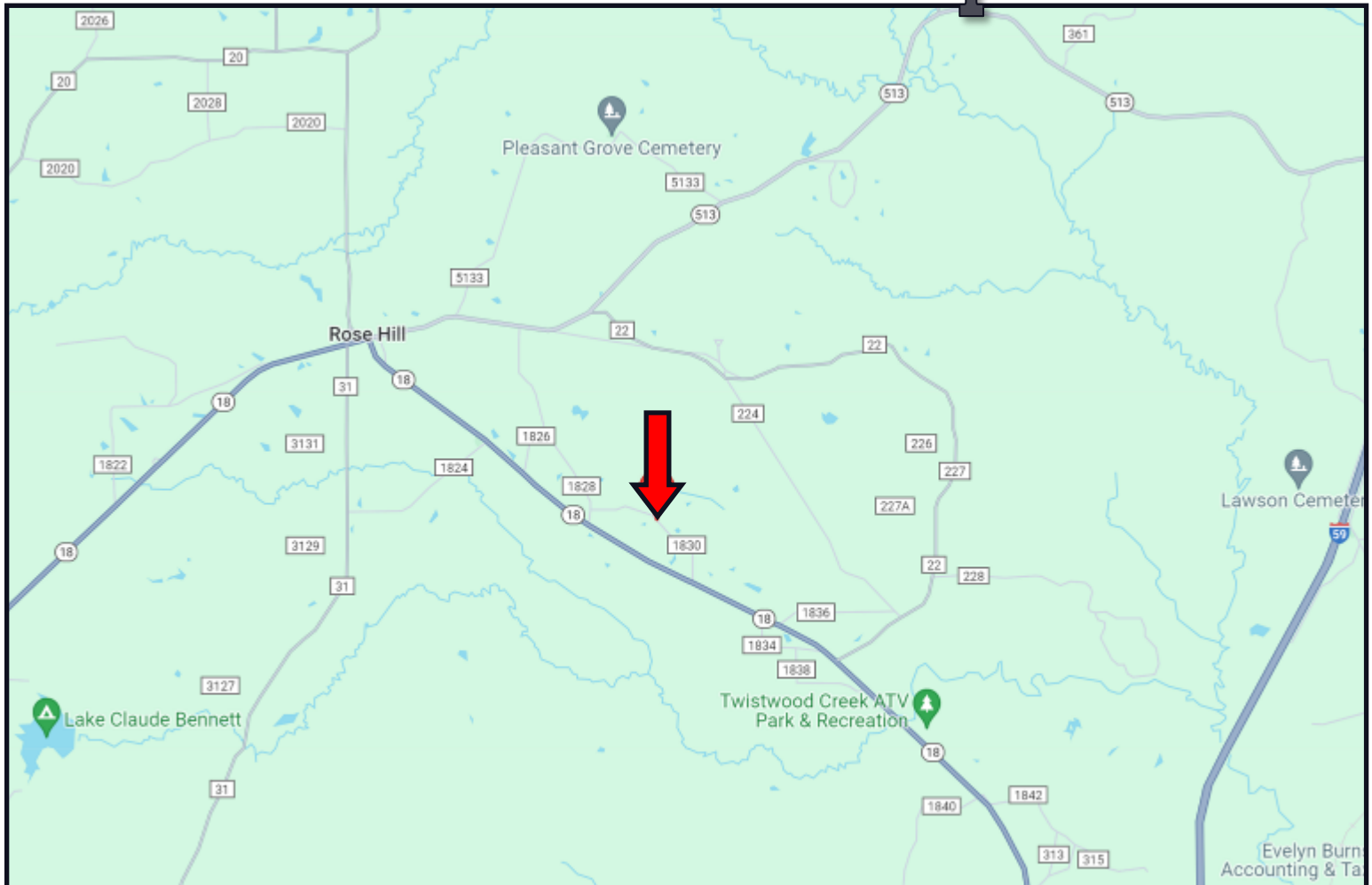
O: 601.898.2772 | C: 601.415.3884  
DBelden@TomSmithLand.com

**TomSmithLandandHomes.com**

Information is believed to be accurate but not guaranteed.



# Directional Map



Directions from Rose Hill, MS: Travel Hwy 18 E for 2.3 miles. Turn left onto Co Rd 1828 and drive 0.1 mile. Turn right onto Co Rd 1830. After 0.5 miles, the property entrance will be on the left. [120 CR 1830, PACHUTA, MS 39347 -GOOGLE MAP LINK](#)



**DALE WILDS**  
REALTOR®

O: 601.898.2772 | C: 662.715.7109  
[Dale@TomSmithLand.com](mailto:Dale@TomSmithLand.com)



**DAVID BELDEN**  
ALC®, REALTOR®

O: 601.898.2772 | C: 601.415.3884  
[DBelden@TomSmithLand.com](mailto:DBelden@TomSmithLand.com)

**TomSmithLandandHomes.com**

Information is believed to be accurate but not guaranteed.

