

12.65 Acres Close to Lake Barkley in Stewart County, TN  
0 Topside Drive  
Dover, TN 37058

**\$90,000**  
12.65± Acres  
Stewart County



**12.65 Acres Close to Lake Barkley in Stewart County, TN  
Dover, TN / Stewart County**

---

**SUMMARY**

**Address**

0 Topside Drive Lot 25

**City, State Zip**

Dover, TN 37058

**County**

Stewart County

**Type**

Lot

**Latitude / Longitude**

36.451253 / -87.771366

**Acreage**

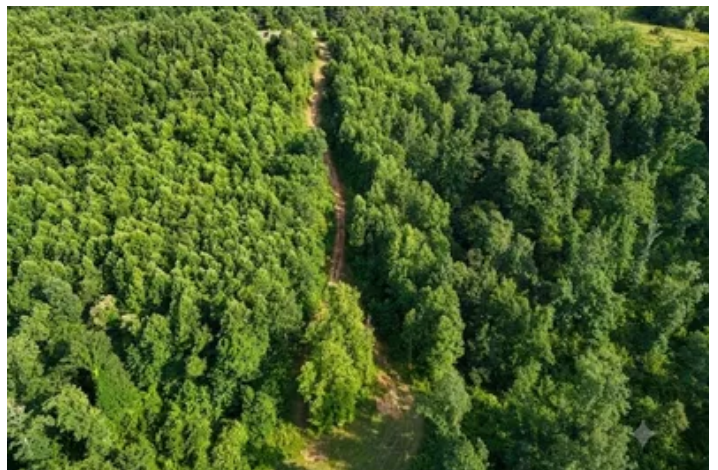
12.65

**Price**

\$90,000

**Property Website**

<https://www.mossoakproperties.com/property/12-65-acres-close-to-lake-barkley-in-stewart-county-tn/stewart/tennessee/111956/>



## 12.65 Acres Close to Lake Barkley in Stewart County, TN Dover, TN / Stewart County

---

### **PROPERTY DESCRIPTION**

Build Your Dream Retreat: Lot 25 Topside Drive, Dover, TN Welcome to Lot 25 on Topside Drive-your blank canvas nestled in the picturesque, rolling hills of Dover, Tennessee. If you have been dreaming of building a custom forever home or a peaceful weekend getaway that perfectly balances wooded seclusion with unparalleled access to outdoor adventure, your search ends here. This beautiful parcel offers the quiet charm of country living while keeping you incredibly connected to some of the region's most beloved attractions and essential hubs. Located 45 minutes from Clarksville and an hour and a half from downtown Nashville. The Ultimate Location for Work and Play. This property boasts an enviable location that puts history, nature, and city conveniences right at your fingertips: Downtown Dover: Just minutes away, you can enjoy the quaint, hometown feel of Dover with its welcoming community, local shops, and daily conveniences. Fort Donelson National Battlefield: History buffs will love being practically neighbors with this meticulously preserved Civil War landmark, situated right along the Cumberland River in town. Cross Creeks National Wildlife Refuge: A short, scenic drive brings you to nearly 9,000 acres of protected wetlands and habitats. It is a premier destination for bird watching, fishing, and taking in Tennessee's native wildlife. Land Between the Lakes (LBL): Ready for adventure? You are on the doorstep of this massive national recreation area, offering over 170,000 acres of hiking, off-roading, horseback riding, hunting, and camping. Kentucky Lake: Water enthusiasts, rejoice! You are just a stone's throw from the world-class boating, water sports, and trophy bass fishing that Kentucky Lake is famous for. Power and High Speed Fibre are on the edge of the property at the road.



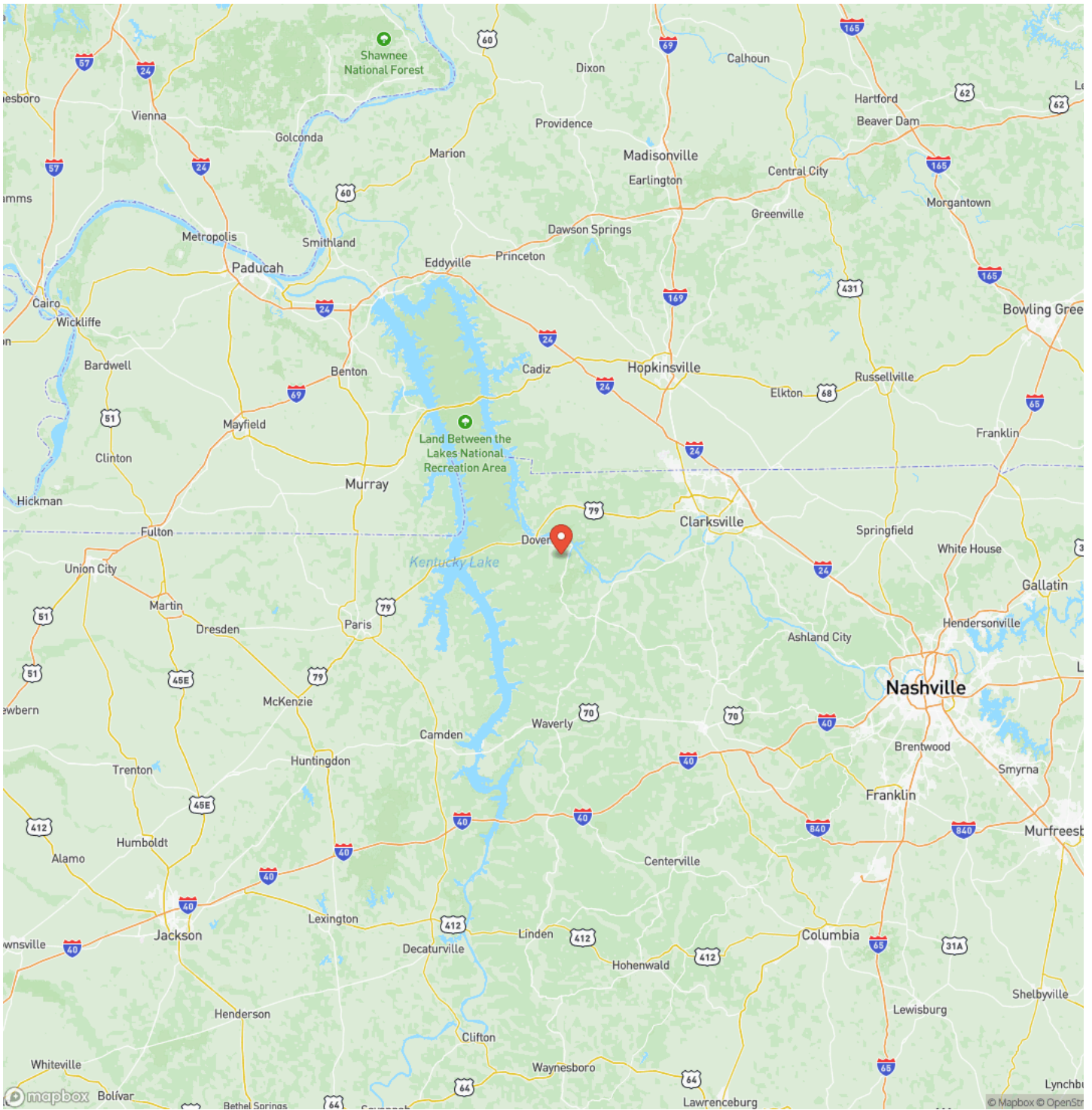
12.65 Acres Close to Lake Barkley in Stewart County, TN  
Dover, TN / Stewart County



## Locator Map



## Locator Map



12.65 Acres Close to Lake Barkley in Stewart County, TN  
Dover, TN / Stewart County

## Satellite Map







**DISCLAIMERS**

Buyer agent to verify all pertinent information.



---

**Mossy Oak Properties Tennessee Land & Farm**  
1276 Lewisburg Pike Ste. B  
Franklin, TN 37064  
(615) 879-8282  
<https://www.mossyoakproperties.com/>

---

