



Fischbach
LAND COMPANY

**HOMOSASSA
DEVELOPMENT
OPPORTUNITY**

29± ACRES

Property Overview

Strategically located in the heart of Florida's Nature Coast, this 29.6± acre parcel offers exceptional visibility along US Highway 19 and features substantial road frontage on both W Kingston Drive and W Atlas Drive. Zoned GNC (General Commercial) and LDR (Low Density Residential), the property presents a versatile development opportunity suitable for a wide range of commercial and residential uses.

Positioned under 5 miles south of the thriving tourist destination of Crystal River, this site is well suited for a high-demand RV park or a thoughtfully designed mixed-use project incorporating retail, office, and residential components. Capitalize on the growth of Citrus County and this rapidly expanding coast line with close proximity to the newly completed Suncoast Parkway ensuring seamless access to Tampa and the greater Central Florida region.



[FischbachLandCompany.com/HomosassaDevelopmentOpportunity](https://www.FischbachLandCompany.com/HomosassaDevelopmentOpportunity)

Property Highlights



Great Visibility on US 19



GNC and LDR Zoning

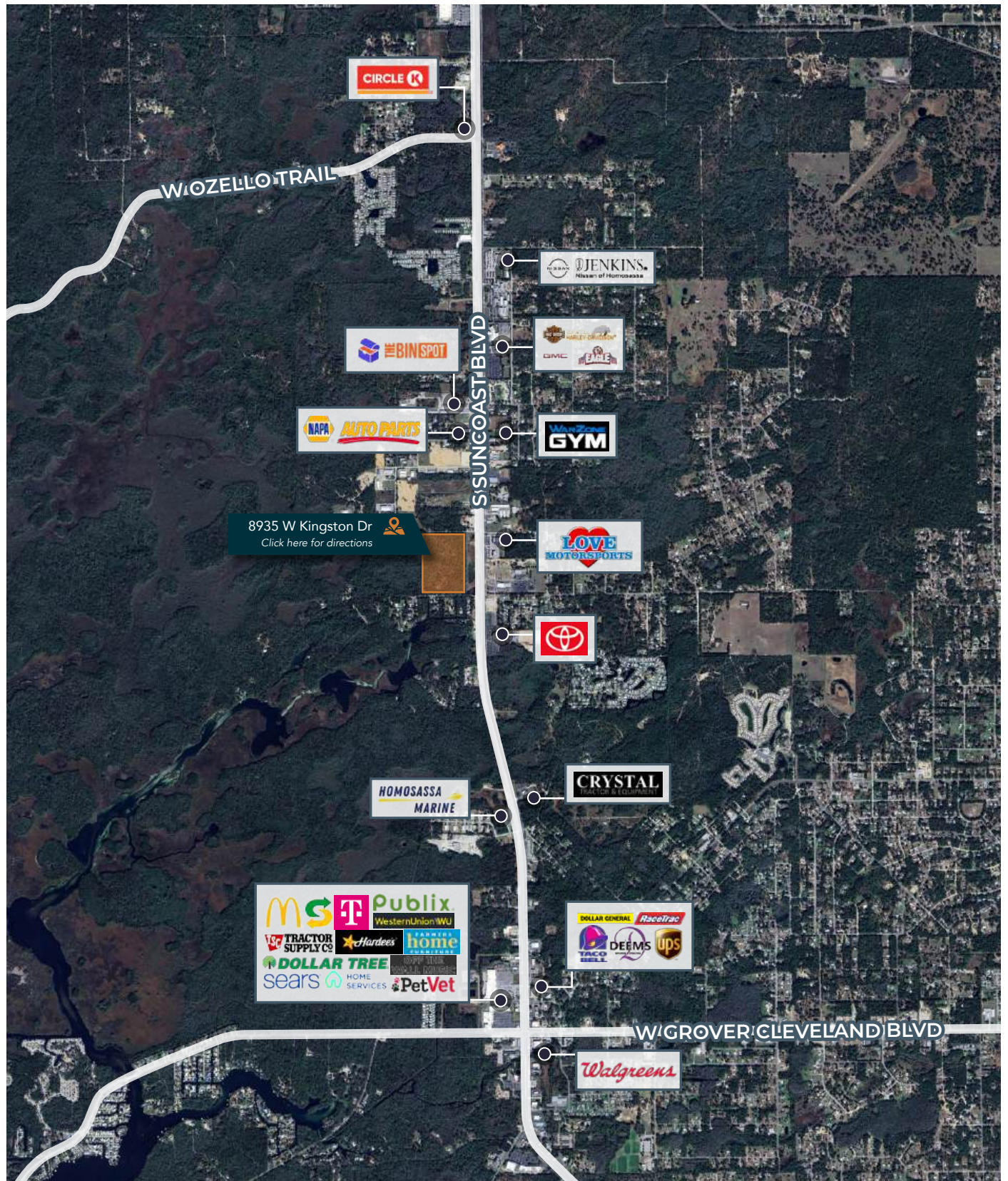


Utilities Available

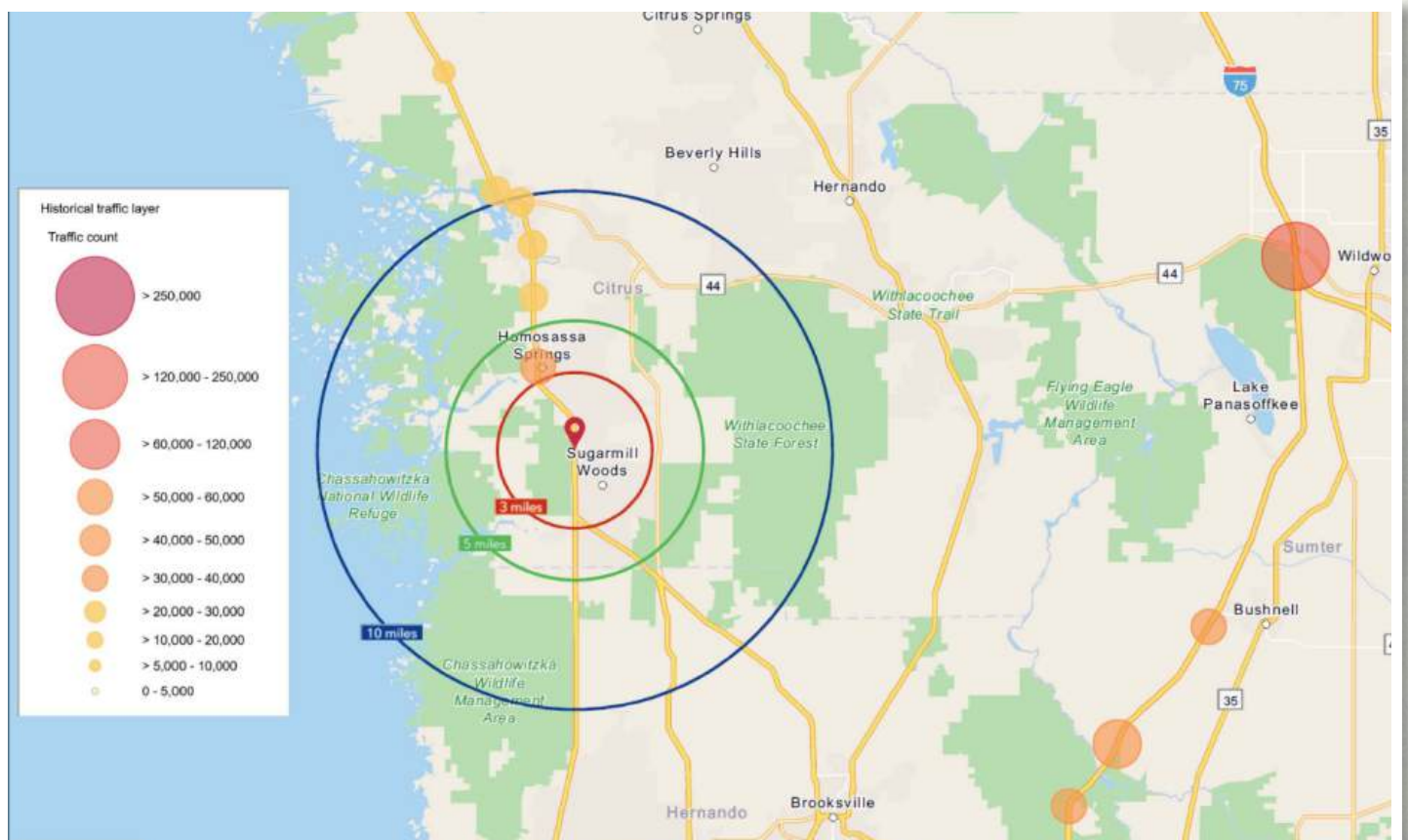


Price	\$1,200,000	County	Citrus
Property Address	8935 W Kingston Drive, Homosassa, FL 34448	Folio/Parcel ID	2309709
Property Type	Commercial Land	STR	15-19-17
Size	29.6± Acres	Road Frontage	989± feet on W. Atlas Drive and 990± feet on W. Kingston Drive
Zoning	GNC, LDR, and CL	Property Taxes	\$8,470.63 (2024)
Future Land Use	GNC and LDR	Utilities	3-inch Force Main on W. Kingston Dr. and 8-inch Force Main on US 19

Market Map

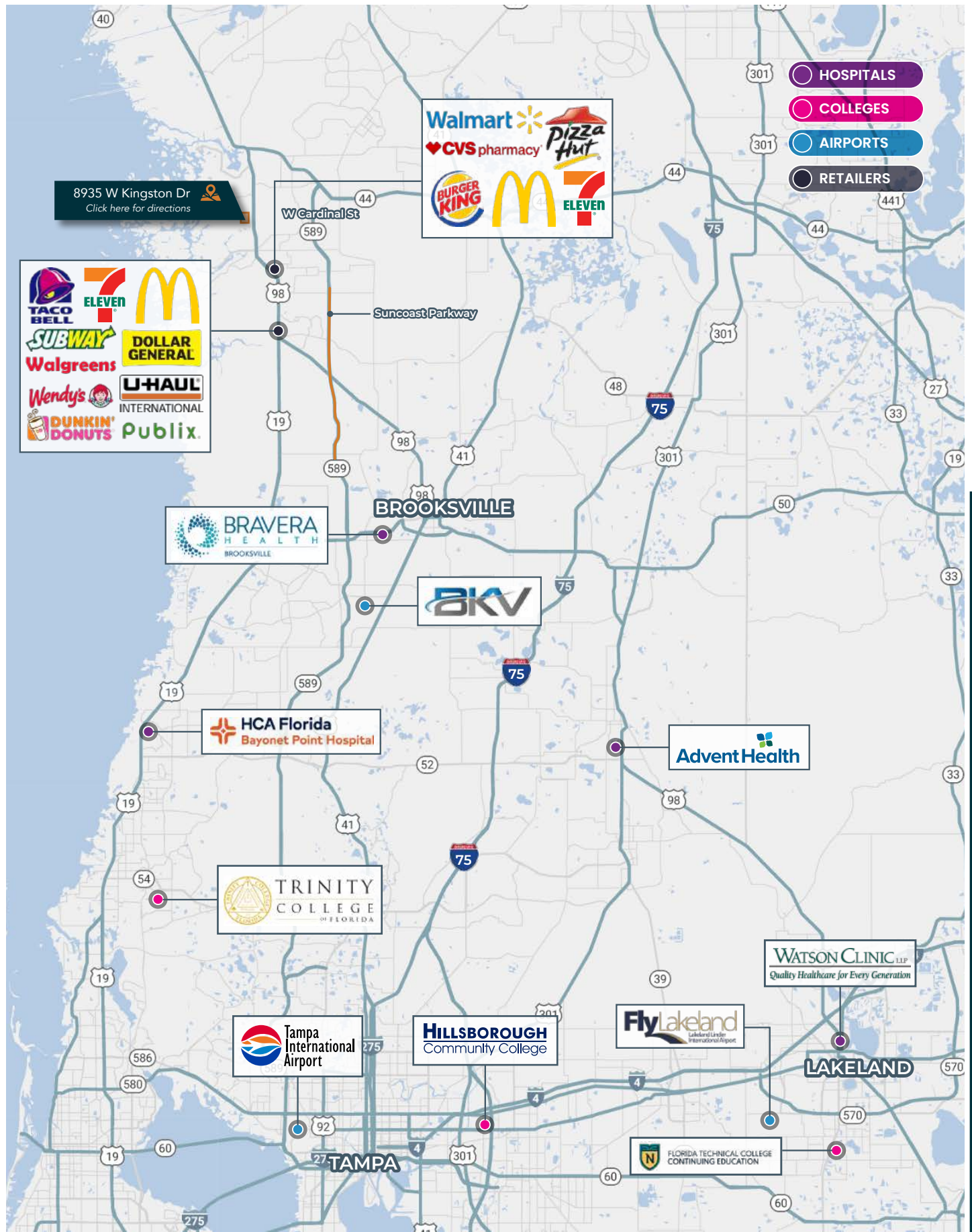


Demographics



Photos





8935 W Kingston Dr
[Click here for directions](#)

- HOSPITALS
- COLLEGES
- AIRPORTS
- RETAILERS

Fischbach **LAND COMPANY**

FISCHBACH LAND COMPANY

917 S PARSONS AVENUE, BRANDON, FL 33511

PHONE: 813-540-1000



BLAISE LELAULU, CCIM | Broker Associate
blaise@fischbachlandcompany.com