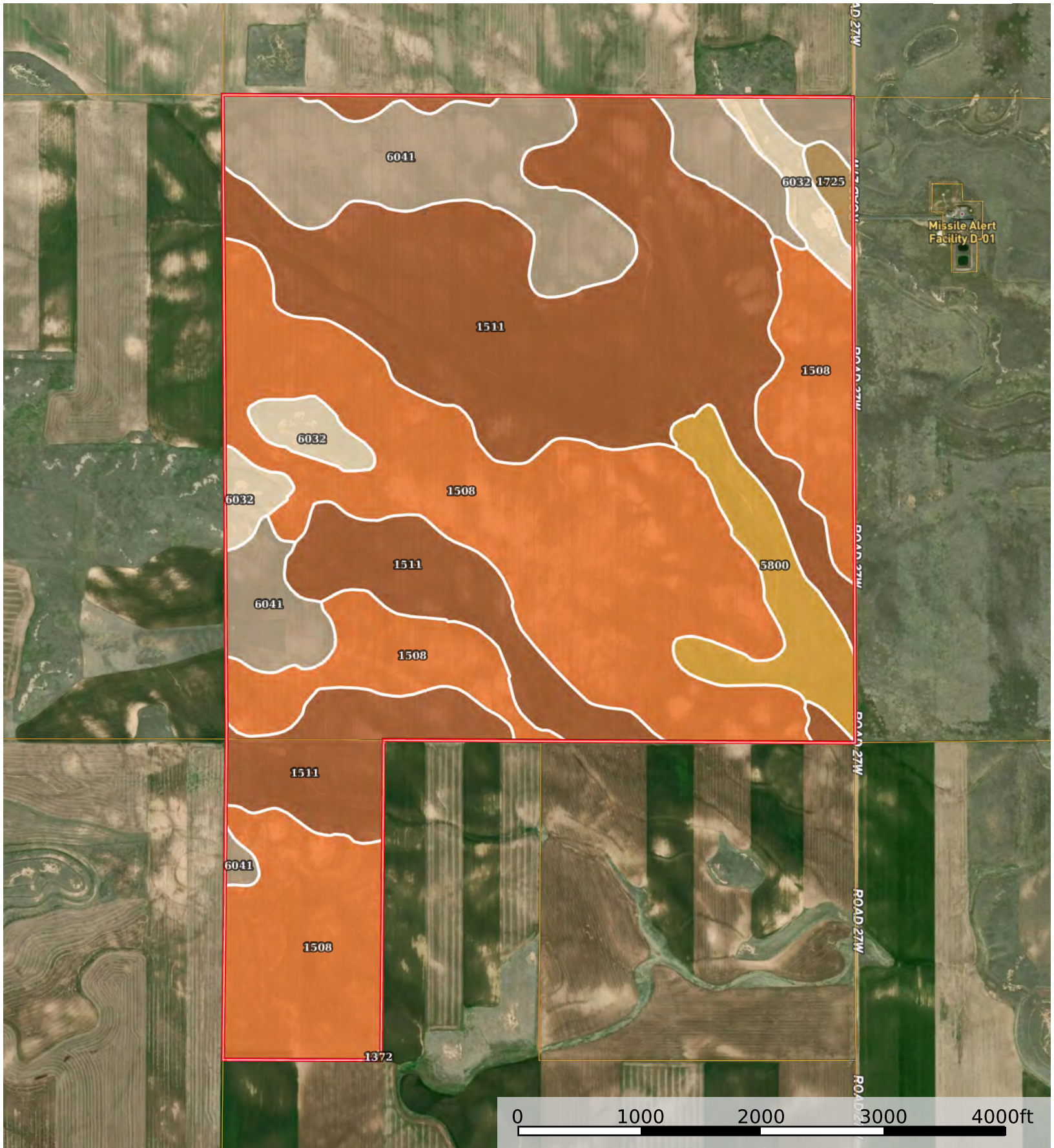


KDK CRP
Kimball County, Nebraska, 710.41 AC +/-



 Boundary

Boundary 709.89 ac

SOIL CODE	SOIL DESCRIPTION	ACRES	%	CPI	NCCPI	CAP
1508	Altvan-Eckley complex, 3 to 9 percent slopes	280.56	39.52	0	26	4e
1511	Altvan-Satanta fine sandy loams, 1 to 3 percent slopes	261.69	36.86	0	40	3e
6041	Tassel-Blanche sandy loams, 3 to 9 percent slopes	105.51	14.86	0	17	6s
5800	Albinas-Cheyenne loams, rarely flooded	31.9	4.49	0	41	3c
6032	Tassel-Blanche complex, 9 to 30 percent slopes	25.64	3.61	0	16	6s
1725	Rosebud loam, 0 to 1 percent slopes	4.52	0.64	0	32	2c
1372	Chappell-Bayard-Broadwater complex, 0 to 2 percent slopes	0.07	0.01	0	31	3e
TOTALS		709.89(*)	100%	-	30.17	3.94

(*) Total acres may differ in the second decimal compared to the sum of each acreage soil. This is due to a round error because we only show the acres of each soil with two decimal.

