

Charming Starter Home

1005 Deering St, Cleveland, MS 38732 | \$179,000



Look at this great starter home or investment property in Bolivar County! This charming home features 2,003 sf of living space, three bedrooms, and two bathrooms. Inside, you'll find renovated vinyl flooring in two bedrooms and the kitchen and brand-new carpet in the third bedroom. A cozy fireplace is in the formal living room at the front of the house, and a spacious living room at the back. The fenced-in backyard provides plenty of room for family and pets, while a two-car carport adds convenience. There's also a shed outside for storing lawn care equipment and other items. This home is within walking distance of Delta State University, making it an ideal investment property for those interested in rental income. Call Anthony for a private showing!



**ANTHONY
STEEN**
REALTOR®

Office: 601.898.2772

Cell: 662.645.5151

Anthony@TomSmithLand.com



Expect More. Get More.

A Real Estate Expert You Can Trust

TomSmithLandandHomes.com

Information is believed to be accurate but not guaranteed.





A Real Estate Expert
You Can Trust!

ANTHONY STEEN
REALTOR®
O: 601.898.2772 C: 662.645.5151
Anthony@TomSmithLand.com
TomSmithLandandHomes.com

Tom Smith
LAND AND
HOMES
Expect More. Get More.

2011-2024
BEST
BROKERAGES

Information is believed to be accurate but not guaranteed.



A Real Estate Expert
You Can Trust!

ANTHONY STEEN

REALTOR®

O: 601.898.2772 C: 662.645.5151

Anthony@TomSmithLand.com

TomSmithLandandHomes.com



Expect More. Get More.



Information is believed to be accurate but not guaranteed.



A Real Estate Expert
You Can Trust!

ANTHONY STEEN
REALTOR®
O: 601.898.2772 C: 662.645.5151
Anthony@TomSmithLand.com
TomSmithLandandHomes.com

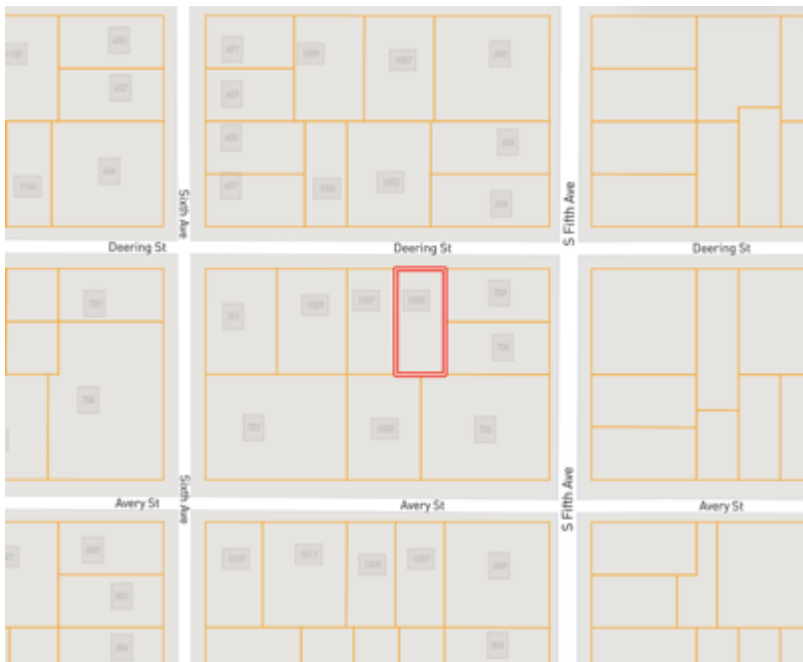
Tom Smith
LAND AND HOMES
Expect More. Get More.

LandReport
2011-2024
BEST
BROKERAGES

Information is believed to be accurate but not guaranteed.

MAPS

[Click for the Interactive Map](#)

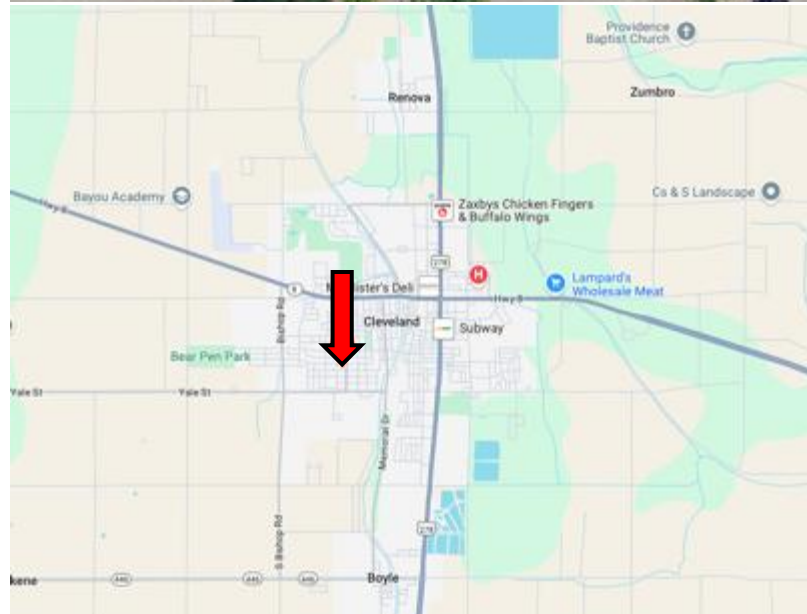


Address: 1005 Deering St, Cleveland, MS 38732

Directions from the intersection of Hwy-61 & MS-8 in Cleveland, MS:

Travel west on E Sunflower Rd for 1 mile. Turn left onto N 5th Ave and travel 0.7 miles. Turn right onto Deering St. After 207 feet, the house will be on the left.

[Google Map Link](#)



**ANTHONY
STEEN**

REALTOR®

Office: 601.898.2772

Cell: 662.645.5151

Anthony@TomSmithLand.com



Expect More. Get More.

A Real Estate Expert You Can Trust

TomSmithLandandHomes.com

Information is believed to be accurate but not guaranteed.

