

LEFLORE COUNTY HOME

492 County Road 25 Minter City, MS 38944



\$125,000

This charming home, located at 492 CR 25 in Minter City, Leflore County, Mississippi, offers space and versatility. The home was built in 1929 and features four bedrooms and two bathrooms, ideal for families or those needing extra room. Priced at \$125,000, it's an excellent choice for first-time buyers or as a hunting camp retreat. The house features 2,536 square feet of living space and a convenient garage. It sits on a generous 0.9-acre lot, offering plenty of space to enjoy. This property exudes character and charm, ready for you to make it your own.



**ANTHONY
STEEN**

REALTOR®

Office: 601.898.2772

Cell: 662.645.5151

Anthony@TomSmithLand.com



Expect More. Get More.

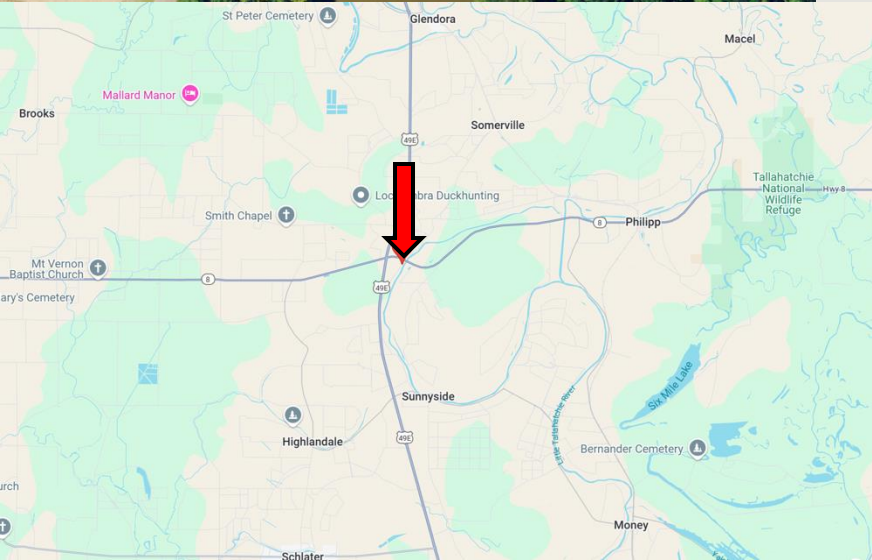
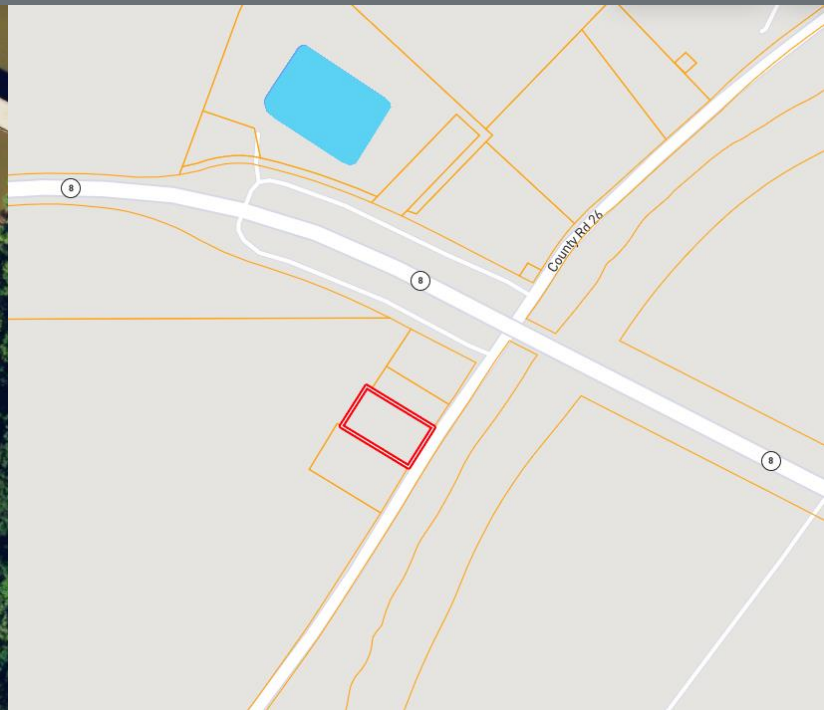
A Real Estate Expert You Can Trust

TomSmithLandandHomes.com

Information is believed to be accurate but not guaranteed.



MAPS | [CLICK FOR THE INTERACTIVE MAP](#)



Address: 492 County Road 25
Minter City, MS 38944

Directions from the Intersection of Hwy 49E and Hwy 8 in Minter City, MS: Travel east on MS-8 E for 0.3 miles. Turn right onto River Rd. After 374 feet, the home will be on the right. [Google Map Link](#)



**ANTHONY
STEEN**
REALTOR®

Office: 601.898.2772

Cell: 662.645.5151

Anthony@TomSmithLand.com



Expect More. Get More.

A Real Estate Expert You Can Trust

TomSmithLandandHomes.com

Information is believed to be accurate but not guaranteed.

