



RANCH CONNECTION

EST. 1984

A photograph of a cowboy on a horse herding two other horses in a field at sunset. The scene is silhouetted against a bright, golden sky, with dust kicked up by the horses' hooves. The cowboy is wearing a red shirt and a cowboy hat. The horses are in the foreground, with the cowboy on a horse in the middle ground.

FORD JUSTESON RANCH

www.ranchconnection.com

FORT WORTH · AUSTIN · CENTRAL TEXAS · SOUTH TEXAS

5049 Edwards Ranch Rd, Flr 4 | Fort Worth, Texas | 76109



FORD JUSTESON RANCH

Rochelle, Texas

SAN SABA COUNTY

Rochelle, Texas

318± ACRES

\$5,250,0000

RANCHING • HUNTING • RECREATIONAL • COMMERCIAL



7735 FM 502
Rochelle, Texas 78725



www.fordjustesonranch.com

- PREMIER EXOTICS RANCH
- 4,620 SQ FT HUNTING LODGE
- GUEST HOME + BUNK HOUSES
- BLINDS + FEEDER STATIONS
- TROPHY WHITETAIL + EXOTICS
- TEXAS HILL COUNTRY LOCALE

Here you'll discover a rare opportunity to own an established, high-fenced ranch in the Texas Hill Country that could serve as a wonderful corporate retreat, family getaway, or permanent residence. Situated between two other high-fenced ranches, it is well-protected from outside predators and potential poaching. Accommodations include a 4,620-square-foot hunting lodge with three beds and three baths, two bunk houses, a manager's/guest modular home, and two individual efficiency apartments. Amenities include a shop with skinning shed and walk-in cooler, plus numerous hunting stations with blinds and feeders. Trophy animals include whitetail, axis and fallow deer, red stag, black-buck, nilgai, oryx, eland, ibex and many more!

PROPERTY VIEWING BY APPOINTMENT ONLY

LOCATION: Just 10 minutes southeast of San Saba off US Hwy 190 and a 30 minute drive from Brownwood and Brady. Centrally located: 1.5 hours to Austin, 2 hrs to Abilene and 3 hrs to DFW. Secluded & secure entrance just off FM 1030.

AREA: Located in the Edwards Plateau ecoregion, deep in the heart of Texas. Local attractions include historic San Saba with restaurants, wineries, a golf course amidst the San Saba River, and nearby, the Colorado River and Colorado Bend State Park.



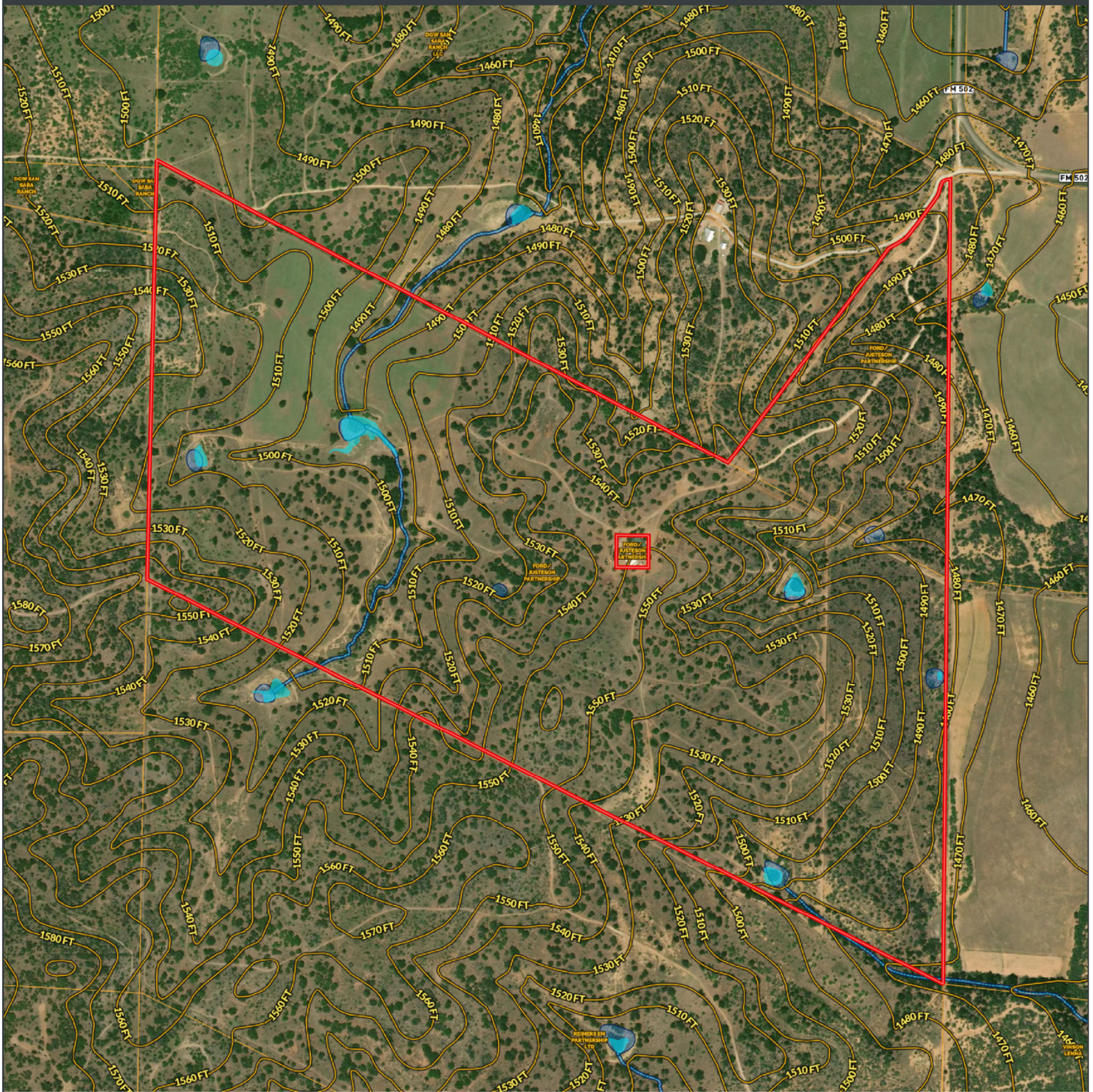
JOSH MEHAFFEY
 ASSOCIATE BROKER
 254-386-9169
 josh@ranchconnection.com

www.ranchconnection.com



FORD JUSTESON RANCH

Rochelle, Texas



-  Boundary
-  Wetlands
-  Riparian
-  Water Body
-  River/Creek
-  Stream, Intermittent

Disclaimer: This ranch offering is subject to prior sale, change in price, or removal from the market without notice. While the information above was provided by sources deemed reliable, it is in no way guaranteed by the broker or agent.