

**Spacious Brick Home on 0.96± Acre Corner Lot**  
123 Dickert St  
Macon, MS 39341

**\$275,000**  
0.960± Acres  
Noxubee County



**Spacious Brick Home on 0.96± Acre Corner Lot  
Macon, MS / Noxubee County**

**SUMMARY**

**Address**

123 Dickert St

**City, State Zip**

Macon, MS 39341

**County**

Noxubee County

**Type**

Residential Property

**Latitude / Longitude**

33.124927 / -88.554337

**Dwelling Square Feet**

1898

**Bedrooms / Bathrooms**

3 / 3

**Acreage**

0.960

**Price**

\$275,000

**Property Website**

<https://www.mossoakproperties.com/property/spacious-brick-home-on-0-96-acre-corner-lot-noxubee-mississippi/105347/>



## Spacious Brick Home on 0.96± Acre Corner Lot Macon, MS / Noxubee County

---

### **PROPERTY DESCRIPTION**

Welcome to a charming residential retreat in the heart of Macon, Mississippi, located in desirable Noxubee County. This inviting brick home sits on a generous 0.96± acre corner lot and offers the perfect blend of space, comfort, and small-town Southern living.

Featuring 3 spacious bedrooms and 3 full bathrooms, the layout is designed to accommodate a variety of lifestyles with ease. A bright and relaxing sunroom adds flexible living space, while the dedicated laundry room enhances everyday convenience. Inside, updated hard surface flooring runs throughout the home, providing a clean, modern feel with low-maintenance appeal.

Step outside to enjoy the patio area-ideal for entertaining or simply unwinding on the edge of town. The property's corner-lot setting offers added space, curb appeal, and accessibility, all just minutes from Hwy 45 for an easy commute.

A 10x16 wired storage building is also included, providing excellent space for tools, equipment, or hobby use.

This well-maintained property delivers comfort, functionality, and location-hard to find all in one package in today's market.

### **Listing Agent:**

Wendell Giesbrecht

Cell: [662-361-8521](tel:662-361-8521)

Office: [662-495-1121](tel:662-495-1121)

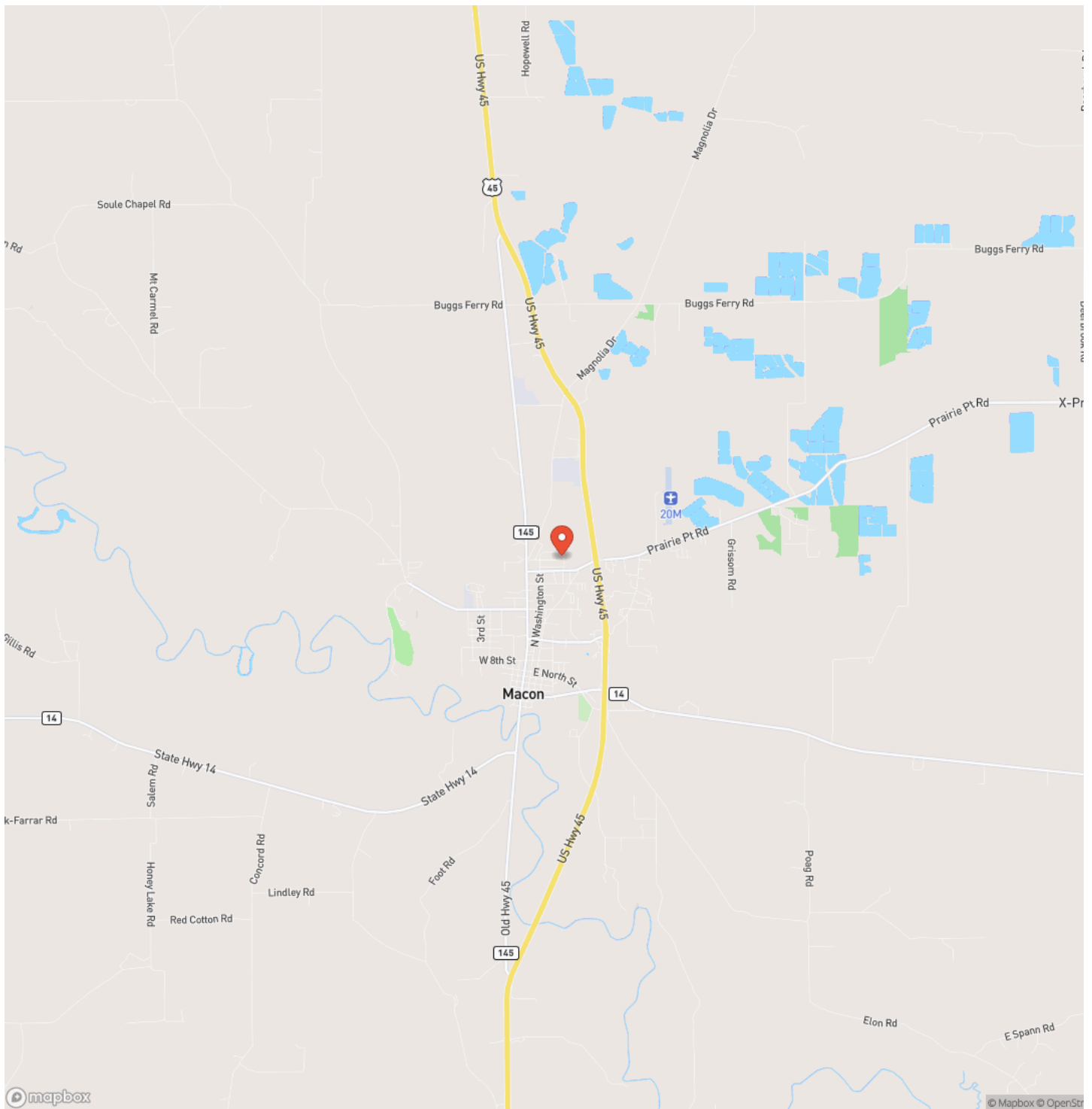
[wgiesbrecht@mossyoakproperties.com](mailto:wgiesbrecht@mossyoakproperties.com)



**Spacious Brick Home on 0.96± Acre Corner Lot  
Macon, MS / Noxubee County**

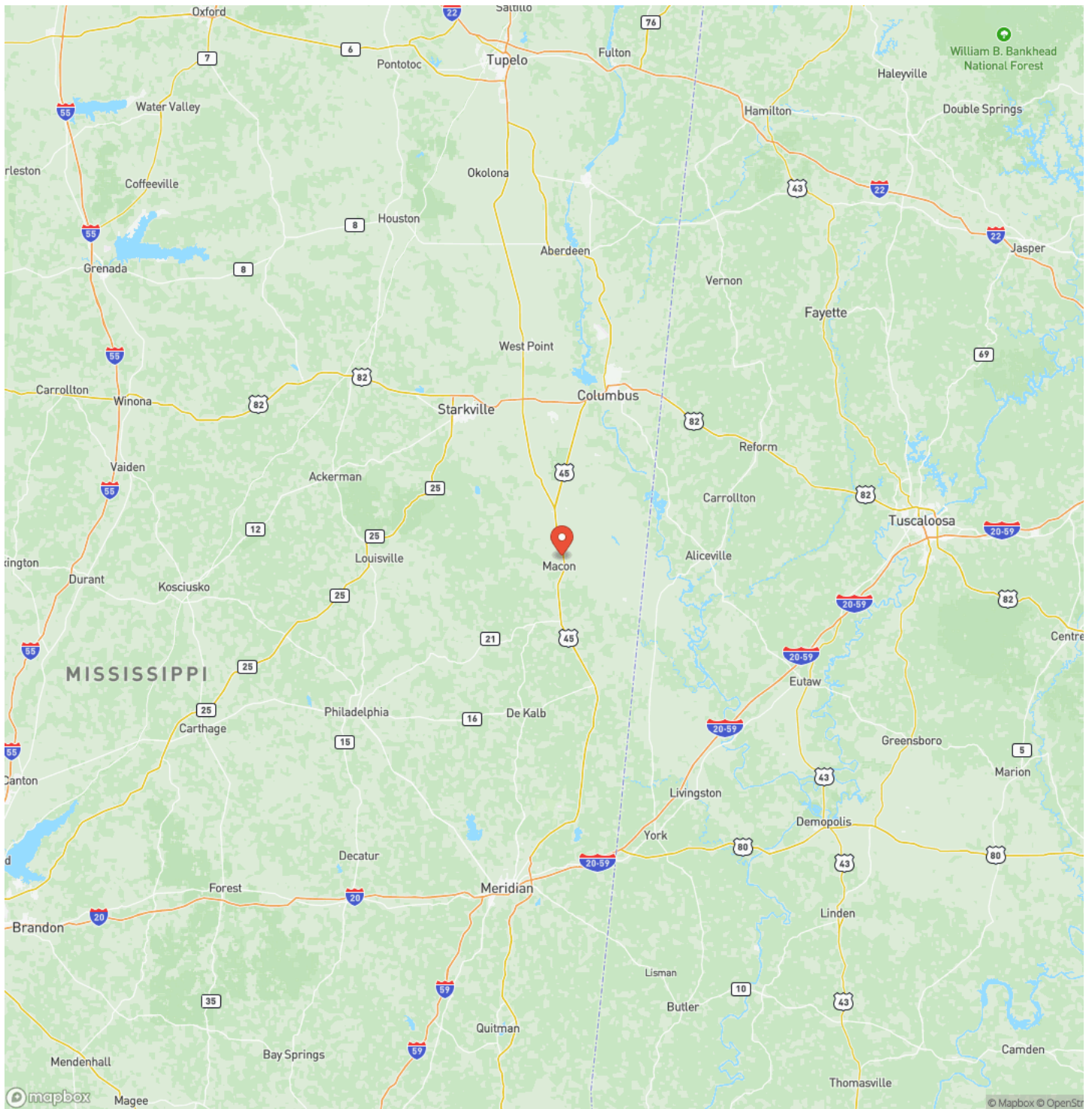


## Locator Map



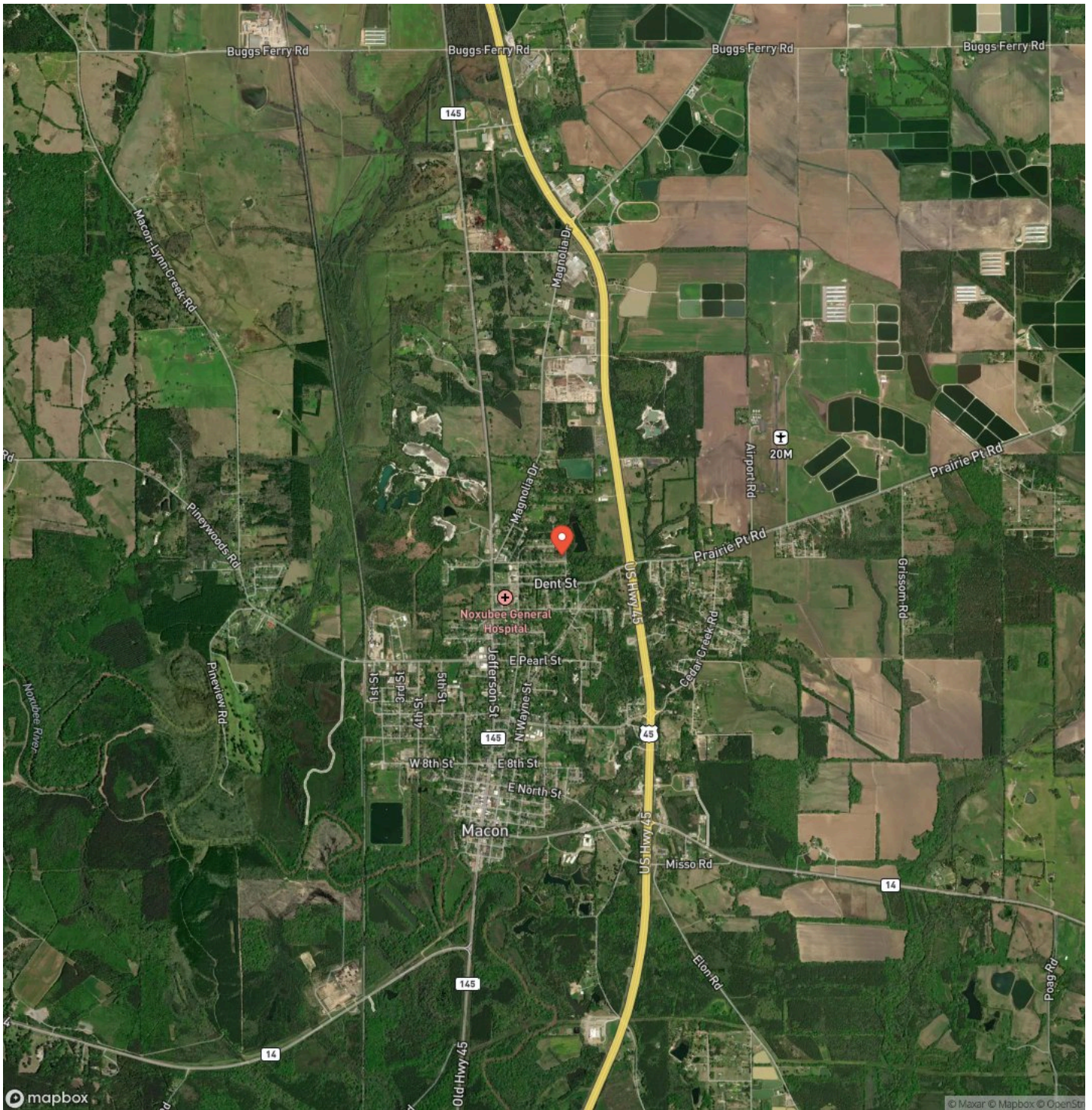
**Spacious Brick Home on 0.96± Acre Corner Lot  
Macon, MS / Noxubee County**

# Locator Map



Spacious Brick Home on 0.96± Acre Corner Lot  
Macon, MS / Noxubee County

# Satellite Map







## **DISCLAIMERS**

Information in this brochure is provided solely for information purposes and does not constitute an offer to sell or advertise real estate outside the states in which broker or agent licensed. The information presented has been obtained from sources deemed to be reliable, but is not guaranteed or warranted by the agent, broker, or the sellers of these properties. This offering is subject to errors, omissions, prior sale, price change, correction or withdrawal from the market without notice. All references to age, square footage, income, expenses, acreage, carrying capacity, and land classification, etc. are approximate. Prospective buyers are chargeable with and expected to conduct their own independent investigation of the information and the property and to rely only on those results. Sellers reserve the right to accept or reject any and all offers without liability to any buyer or cooperating broker.

Maps are provided for illustration purposes only, the accuracy is not warranted. Parcels on interactive maps are not adjusted to match aerial backgrounds. This information is for reference purposes only and is not a legal document. Data maps contain errors. The seller and seller's agent are making known to all potential buyers that there may be variations between the location of the existing fence lines and the legal description of the deeded property. Seller and seller's agent make no warranties with regard to the location of the fence lines in relationship to the deeded property lines, nor does the Seller make any warranties or representations with regard to the specific acreage contained within the fenced property lines. Seller is selling the property in an "as is" condition, which includes the location of the fences as they exist. Boundaries shown on the accompanying maps are approximate, based on county parcel data. The maps are not to scale. The accuracy of the maps is not guaranteed. Prospective buyers are encouraged to verify fence lines, deeded property lines and acreages using a licensed surveyor at their own expense.



---

**Mossy Oak Properties Bottomland Real Estate**

5795 Highway 45 Alt S

West Point, MS 39773

(662) 495-1121

<https://www.mossoakproperties.com/>

---

