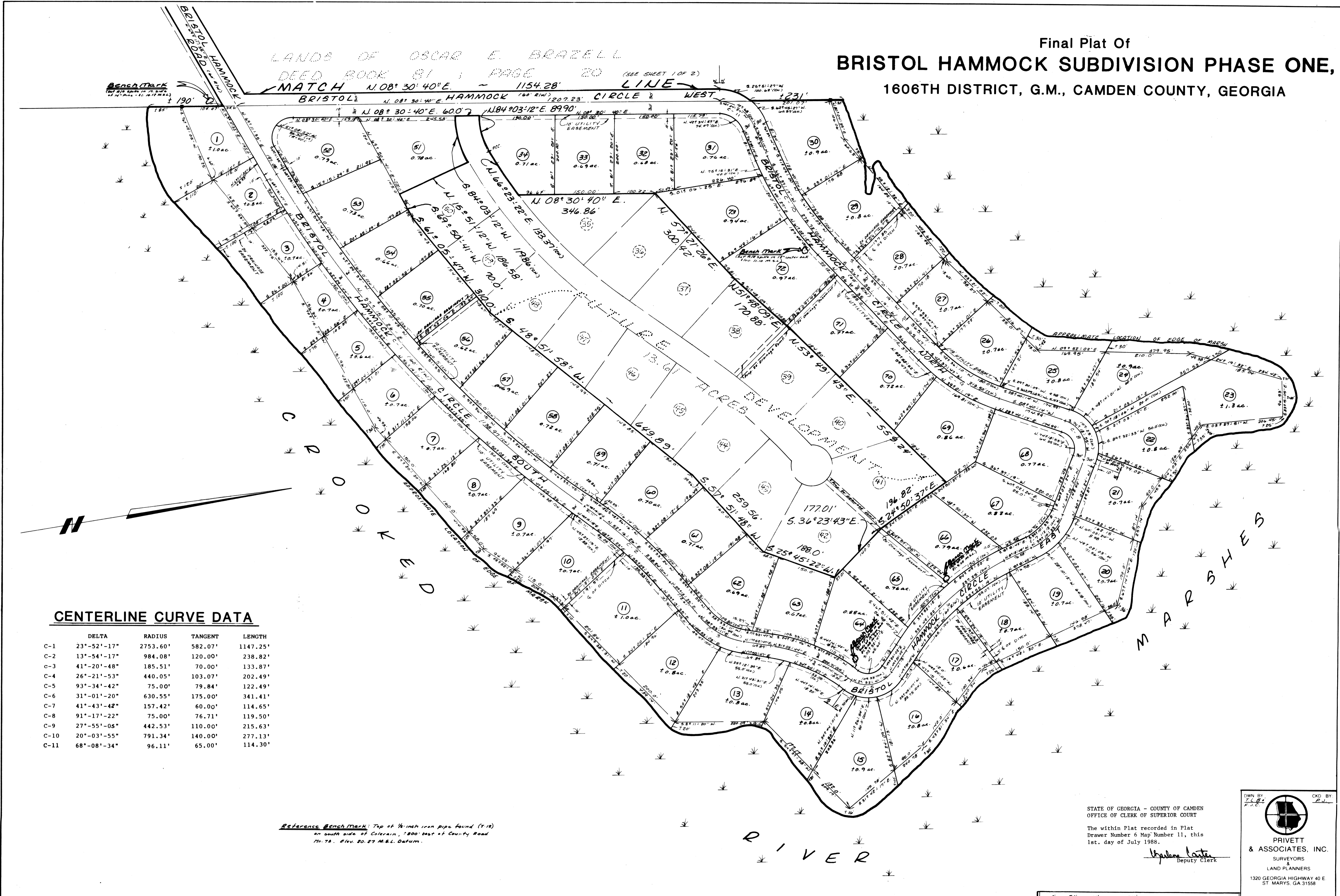


Final Plat Of
BRISTOL HAMMOCK SUBDIVISION PHASE ONE,
 1606TH DISTRICT, G.M., CAMDEN COUNTY, GEORGIA

LANDS OF OSCAR E. BRAZELL
 DEED BOOK 81, PAGE 20 (SEE SHEET 1 OF 2)
 MATCH N.08° 30' 40" E. 1154.28' LINE
 BRISTOL HAMMOCK CIRCLE WEST



CENTERLINE CURVE DATA

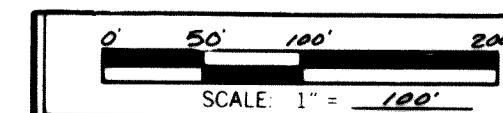
	DELTA	RADIUS	TANGENT	LENGTH
C-1	23°-52'-17"	2753.60'	582.07'	1147.25'
C-2	13°-54'-17"	984.08'	120.00'	238.82'
C-3	41°-20'-48"	185.51'	70.00'	133.87'
C-4	26°-21'-53"	440.05'	103.07'	202.49'
C-5	93°-34'-42"	75.00'	79.84'	122.49'
C-6	31°-01'-20"	630.55'	175.00'	341.41'
C-7	41°-43'-42"	157.42'	60.00'	114.65'
C-8	91°-17'-22"	75.00'	76.71'	119.50'
C-9	27°-55'-05"	442.53'	110.00'	215.63'
C-10	20°-03'-55"	791.34'	140.00'	277.13'
C-11	68°-08'-34"	96.11'	65.00'	114.30'

Reference Benchmark: Top of 1/2 inch iron pipe found (4.12) on south side of Colerain, 200' east of County Road No. 78. Elev. 20.27 M.S.L. Datum.

STATE OF GEORGIA - COUNTY OF CAMDEN
 OFFICE OF CLERK OF SUPERIOR COURT

The within Plat recorded in Plat
 Drawer Number 6 Map Number 11, this
 1st. day of July 1988.

Thelma Carter
 Deputy Clerk



DATE January 11, 1988

DWN BY
 T.C.B.
 P.C.C.

CKD BY
 P.J.

PRIVETT & ASSOCIATES, INC.
 SURVEYORS & LAND PLANNERS
 1320 GEORGIA HIGHWAY 40 E
 ST. MARYS, GA 31558

REGISTERED SURVEYOR NO. 2218 GA
 REGISTERED SURVEYOR NO. 2841 FLA