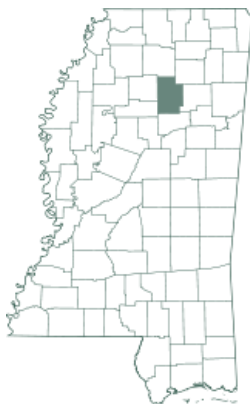




Expect More. Get More.



**\$85,850**

PotlatchDeltic Preferred **BROKER**

## 33.8± Acre Blank Canvas in Calhoun County, MS



Located in the secluded wilderness of Calhoun County, this 33.8± acre tract offers a tranquil retreat accessible via a rarely traveled gravel road. Replanted in 2019, the property features thriving vegetation that provides dense cover, ideal for creating deer bedding areas. Deer tracks were evident along the road system traversing the land, serving as a promising sign of abundant game. This remote tract presents an unmatched opportunity for those seeking an isolated haven for hunting pursuits. Give Bruce a call for your private showing today!



**BRUCE  
WEST**

REALTOR®

Office: 662.441.2500

Cell: 662.873.3007

Bruce@TomSmithLand.com



Expect More. Get More.

**A Real Estate Expert You Can Trust**

TomSmithLandandHomes.com

Information is believed to be accurate but not guaranteed.







**A Real Estate Expert**  
*You Can Trust!*

**BRUCE WEST**  
REALTOR®

O: 662.441.2500 C: 662.873.3007

Bruce@TomSmithLand.com

TomSmithLandandHomes.com



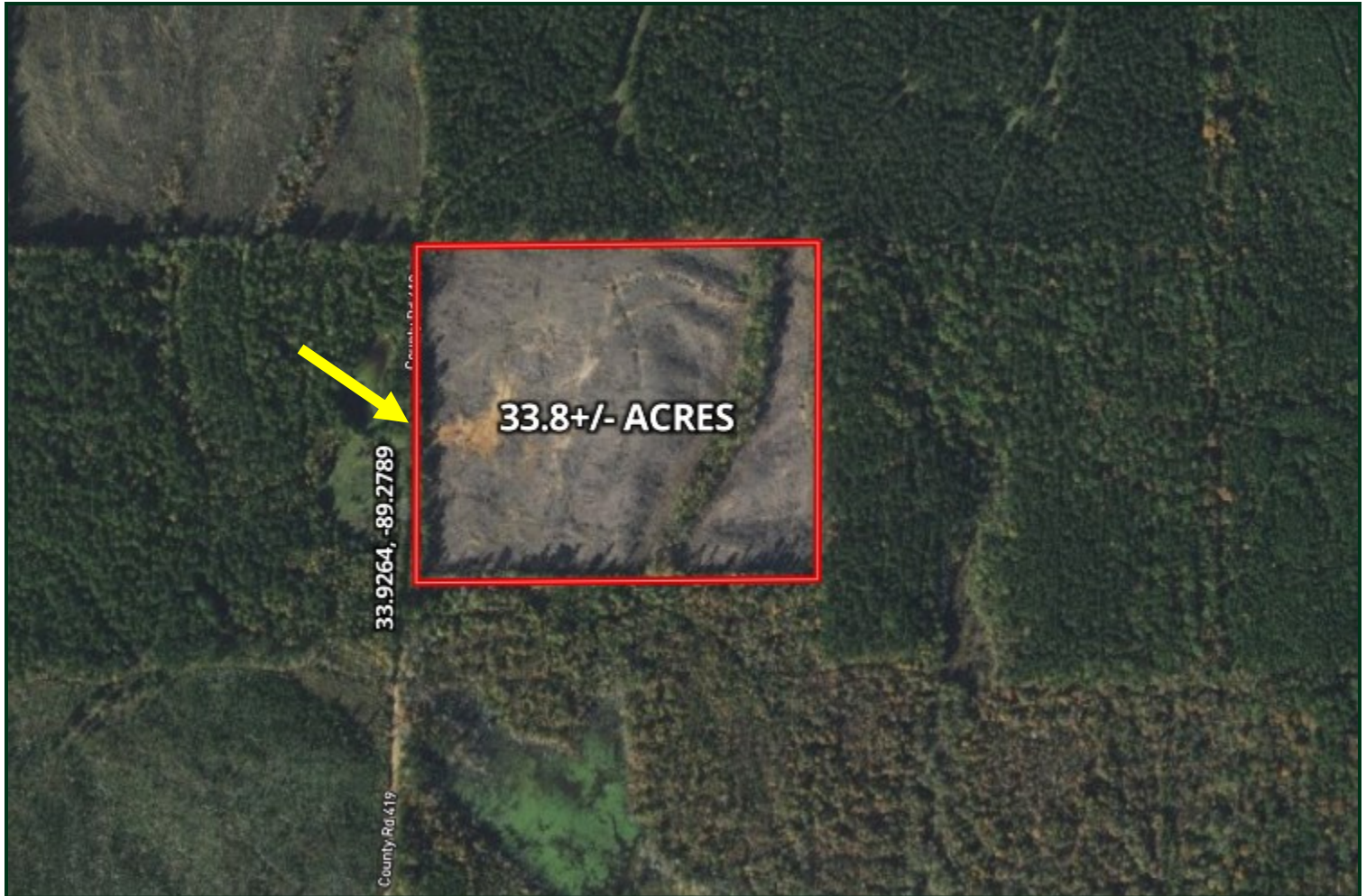
Expect More. Get More.



Information is believed to be accurate but not guaranteed.



# Aerial Map



[CLICK HERE FOR AN INTERACTIVE MAP](#)

A Real Estate Expert  
*You Can Trust!*

**BRUCE WEST**  
REALTOR®

O: 662.441.2500 C: 662.873.3007

Bruce@TomSmithLand.com

TomSmithLandandHomes.com

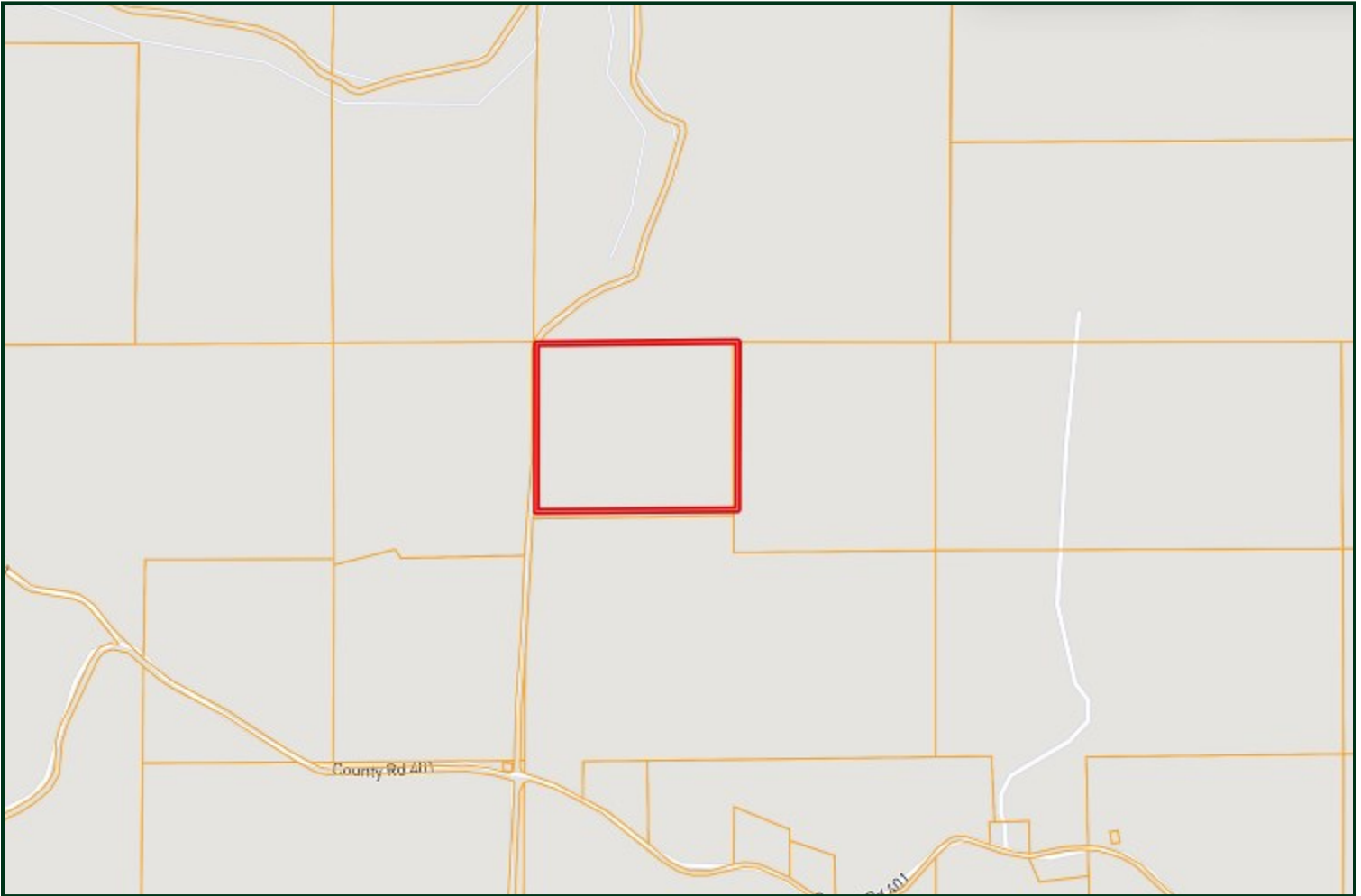


Expect More. Get More.



Information is believed to be accurate but not guaranteed.

# Ownership Map



A Real Estate Expert  
*You Can Trust!*

**BRUCE WEST**  
REALTOR®

O: 662.441.2500 C: 662.873.3007

Bruce@TomSmithLand.com

TomSmithLandandHomes.com



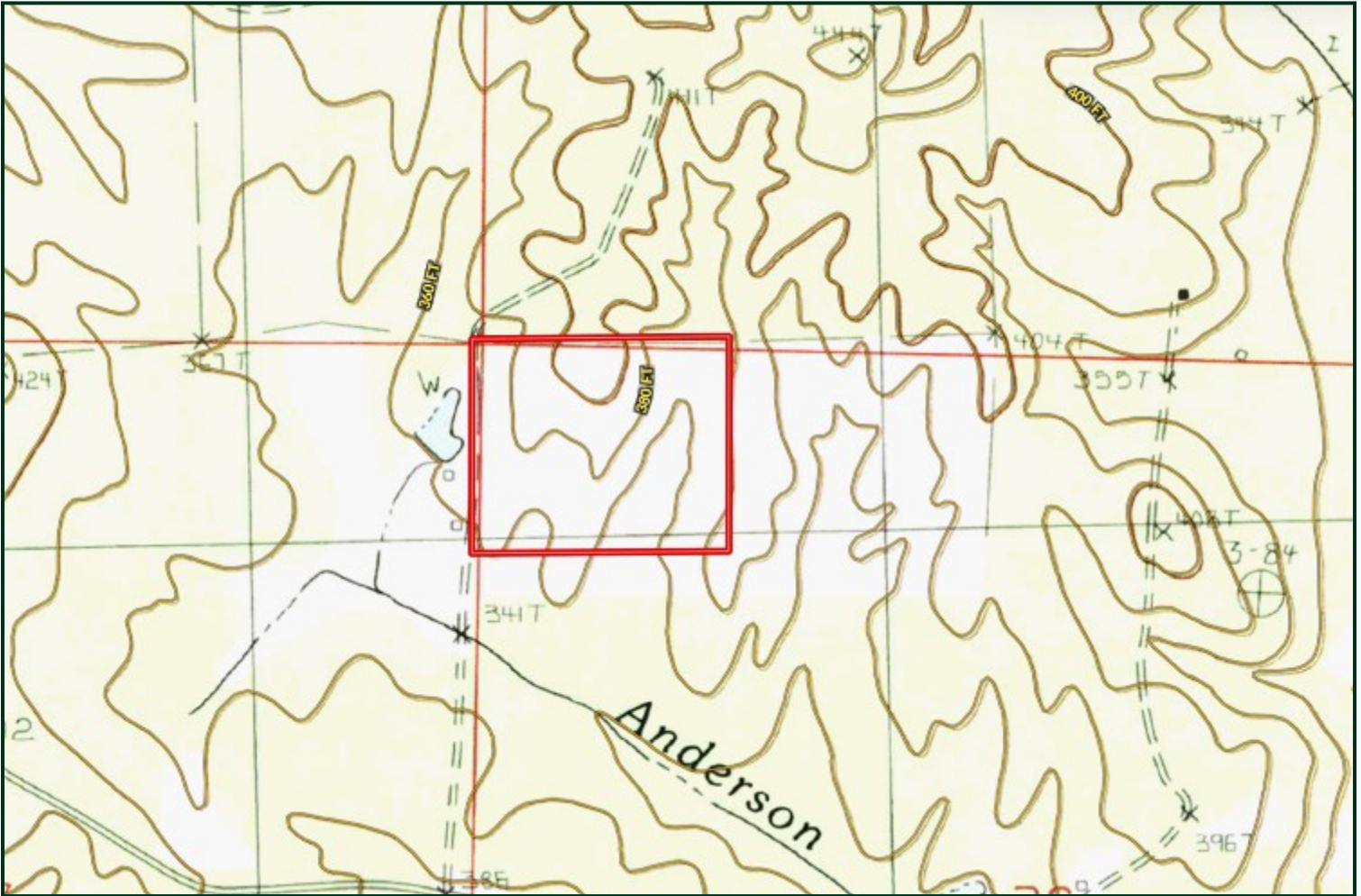
Expect More. Get More.



Information is believed to be accurate but not guaranteed.



# Topo Map



A Real Estate Expert  
*You Can Trust!*

**BRUCE WEST**  
REALTOR®

O: 662.441.2500 C: 662.873.3007

Bruce@TomSmithLand.com

TomSmithLandandHomes.com

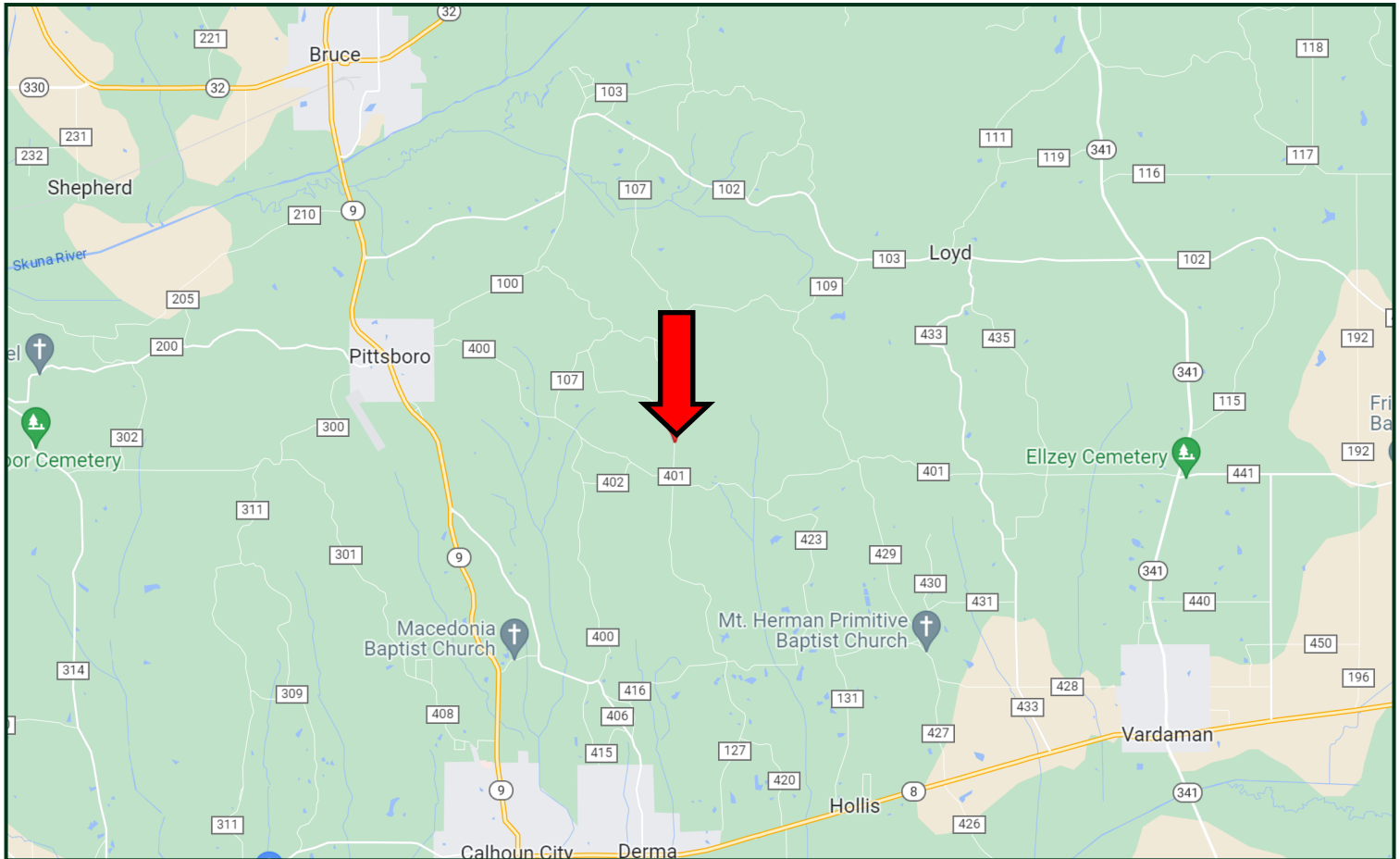


Expect More. Get More.

Information is believed to be accurate but not guaranteed.

LowReport  
2011-2024  
BEST  
BROKERAGES

# Directional Map



**Directions from Hwy 9 and CR 400 in Pittsboro, MS:** Travel CR 400 for 2.4 miles. Turn left onto CR 401 and travel 1.2 miles. Turn left onto CR 419. After .4 miles, the property will be on the right.

[GOOGLE MAP LINK](#)

**BRUCE  
WEST**  
REALTOR®

Office: 662.441.2500

Cell: 662.873.3007

[Bruce@TomSmithLand.com](mailto:Bruce@TomSmithLand.com)



Expect More. Get More.

**A Real Estate Expert You Can Trust**

[TomSmithLandandHomes.com](http://TomSmithLandandHomes.com)

Information is believed to be accurate but not guaranteed.