

**47 Deeded Acres of Farm, Timber and Hunting Land for Sale in Surry County VA!**  
Off Colonial Trail West  
Spring Grove, VA 23881

**\$239,900**  
47± Acres  
Surry County



## 47 Deeded Acres of Farm, Timber and Hunting Land for Sale in Surry County VA! Spring Grove, VA / Surry County

### **SUMMARY**

#### **Address**

Off Colonial Trail West null

#### **City, State Zip**

Spring Grove, VA 23881

#### **County**

Surry County

#### **Type**

Farms, Hunting Land, Recreational Land, Timberland, Business Opportunity

#### **Latitude / Longitude**

37.158126 / -76.950325

#### **Acreage**

47

#### **Price**

\$239,900

#### **Property Website**

<https://www.mossyoakproperties.com/property/47-deeded-acres-of-farm-timber-and-hunting-land-for-sale-in-surry-county-va-/surry/virginia/112092/>



## 47 Deeded Acres of Farm, Timber and Hunting Land for Sale in Surry County VA! Spring Grove, VA / Surry County

---

### **PROPERTY DESCRIPTION**

#### **Over 1,000 feet of Road Frontage on Rt. 10 - Substantial Timber Value - Approximately 8 acres of Tillable Ground**

Welcome to Cemetery Ridge at Cabin Point! Located in northern Surry County, this unique property is deeply rooted in big buck tradition. Upper Chippokes Creek, famous to locals and travelers alike, has provided ideal habitat for production of world class whitetails in this neck of the woods for countless generations. The mature hardwood timber here as well as a great mix of mature loblolly pine makes for an exceptional investment opportunity. The eight acres of cropland provides easy options for continued agriculture or residential possibilities. The historical theme of this Surry County gem is continued by the existence of a small cemetery at the southwest corner with markers dating back over two centuries.

#### **Here are a few more things to know when considering this property:**

- Surry County School District:

\*Surry Elementary - PK-5 – 11.9-miles

\*Luther P. Jackson Middle - 6-8 – 11.9-miles

\*Surry High - 9-12 – 11.9-miles

- Internet available: Ruralband, T-Mobile, Verizon, AT&T, StarLink

#### **Rural Serenity with Premier Regional Access**

- Prime Northern Surry Location: Situated in the highly desirable northern portion of the county, this property offers a private farm and timberland retreat with convenient, immediate access to Route 10 (Colonial Trail West) and Route 31.
- The Jamestown Ferry Gateway: Enjoy easy access to the Jamestown-Scotland Ferry, providing a free, scenic 20-minute daily commute straight across the James River into Williamsburg, James City County, and the Peninsula.
- Straightforward Regional Travel: Convenient highway corridors link your rural escape directly to Smithfield, Newport News, Suffolk, and the Hampton Roads metro area, as well as Petersburg and Richmond to the northwest.

#### **Outdoor Recreation & Natural Surroundings**

- Chippokes State Park Nearby: Located just minutes away in northern Surry, this massive 1,947-acre historic park features miles of hiking, biking, and equestrian trails, beach access along the James River, modern campgrounds, and a working 17th-century farm museum.

<https://www.dcr.virginia.gov/state-parks/chippokes>

- James River Waterways: Abundant opportunities for boating, kayaking, and tidal river fishing are right at your doorstep, with local spots like the Surry Seafood Company offering a deep-water marina dock and dining just a short drive away.
- Private & Public Wildlife Havens: Establish your own premier hunting, bird-watching, and conservation tract. The property's natural cover is complemented by direct regional access to state-protected public lands across Southside Virginia.

<https://dwr.virginia.gov/wma/>

#### **History, Timber, & Local Character**

- Bacon's Castle: Located just down the road, this national historic landmark built in 1665 stands as the oldest documented brick dwelling in the United States and a rare piece of 17th-century architecture.



<https://www.dhr.virginia.gov/historic-registers/090-0001/>

- Deep Colonial Roots:

Own a piece of a region rich in early American heritage, spanning from the original 1600s James River plantations to the county's longstanding, proud agricultural identity.

<https://www.surrycountyva.gov>

- Historic Neighbors:

Enjoy short, scenic country drives to the neighboring historic town of Smithfield—famous for its world-renowned ham, boutique shopping, and beautifully preserved historic downtown strip.

### **Land Utility, Flexibility & Connection**

- Productive Acreage & Investment: A versatile tract ideal for a working farm, a private estate homesite, or a long-term timber investment, featuring established timber stands, fertile soils, and the ultimate privacy of county living.
- Country Seclusion, Nearby Conveniences: Enjoy total rural peace while remaining just minutes from the Surry Courthouse area, local diners, community services, and country markets.
- Broadband Connected: Exceptional for large acreage, this property benefits from access to high-speed fiber-optic internet (via RURALBAND) running along the corridor, ensuring lightning-fast connectivity for smart farm management, remote work, or a custom home setup.

During the times of the Virginia Colony, Surry County was formed in 1652 from a portion of James City County (one of the original 8 counties formed in 1634) south of the James River. It was named for the English county of Surrey. Surry County initially consisted of two parishes of the Church of England: Lawne's Creek and Southwark.

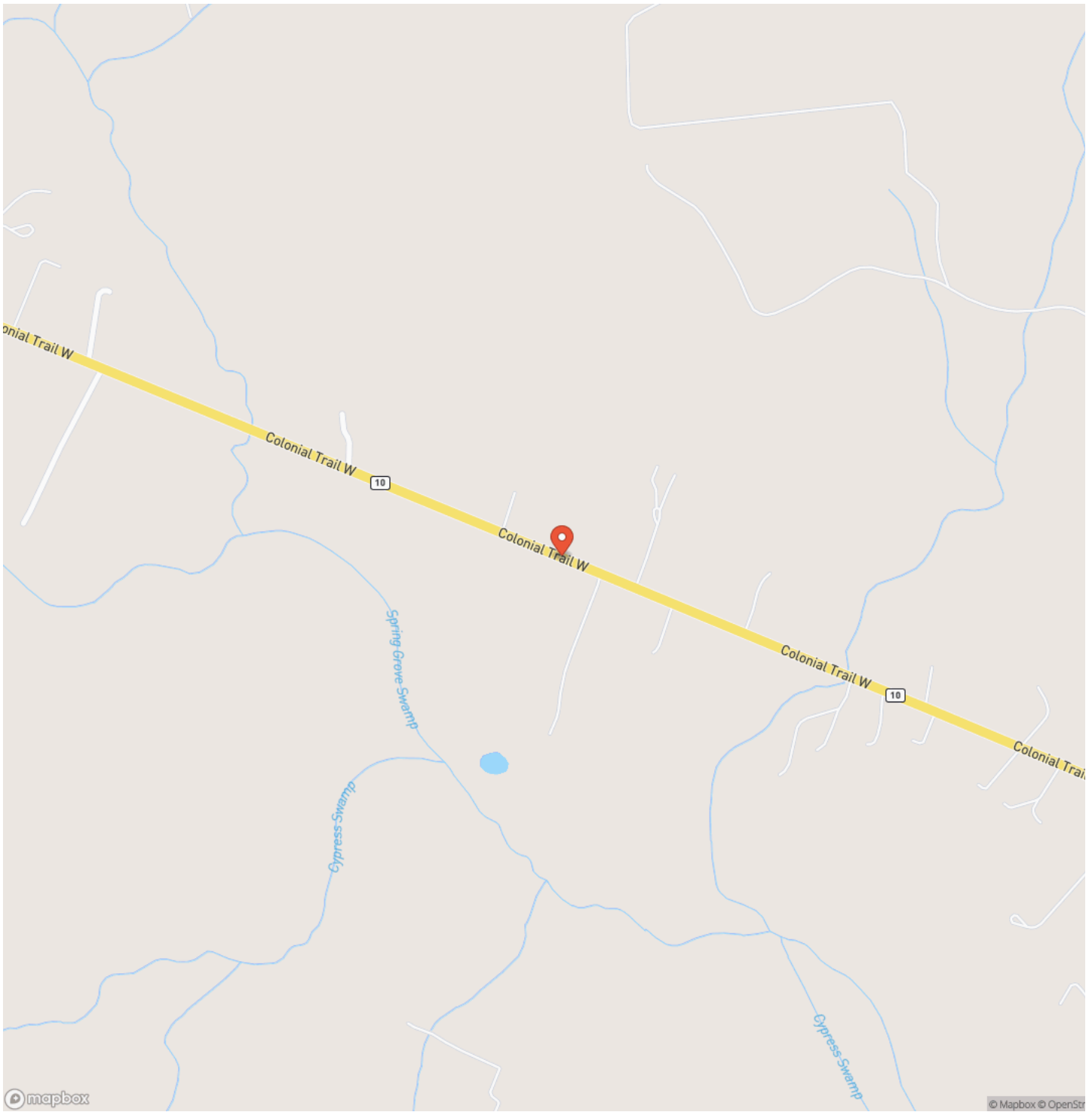
For more information on this and other land for sale in Surry County, contact Chris Howell at [757-651-8872](tel:757-651-8872) or by email at [chris@mossyoakproperties.com](mailto:chris@mossyoakproperties.com), or visit [landandfarmsrealty.com](http://landandfarmsrealty.com).



**47 Deeded Acres of Farm, Timber and Hunting Land for Sale in Surry County VA!  
Spring Grove, VA / Surry County**

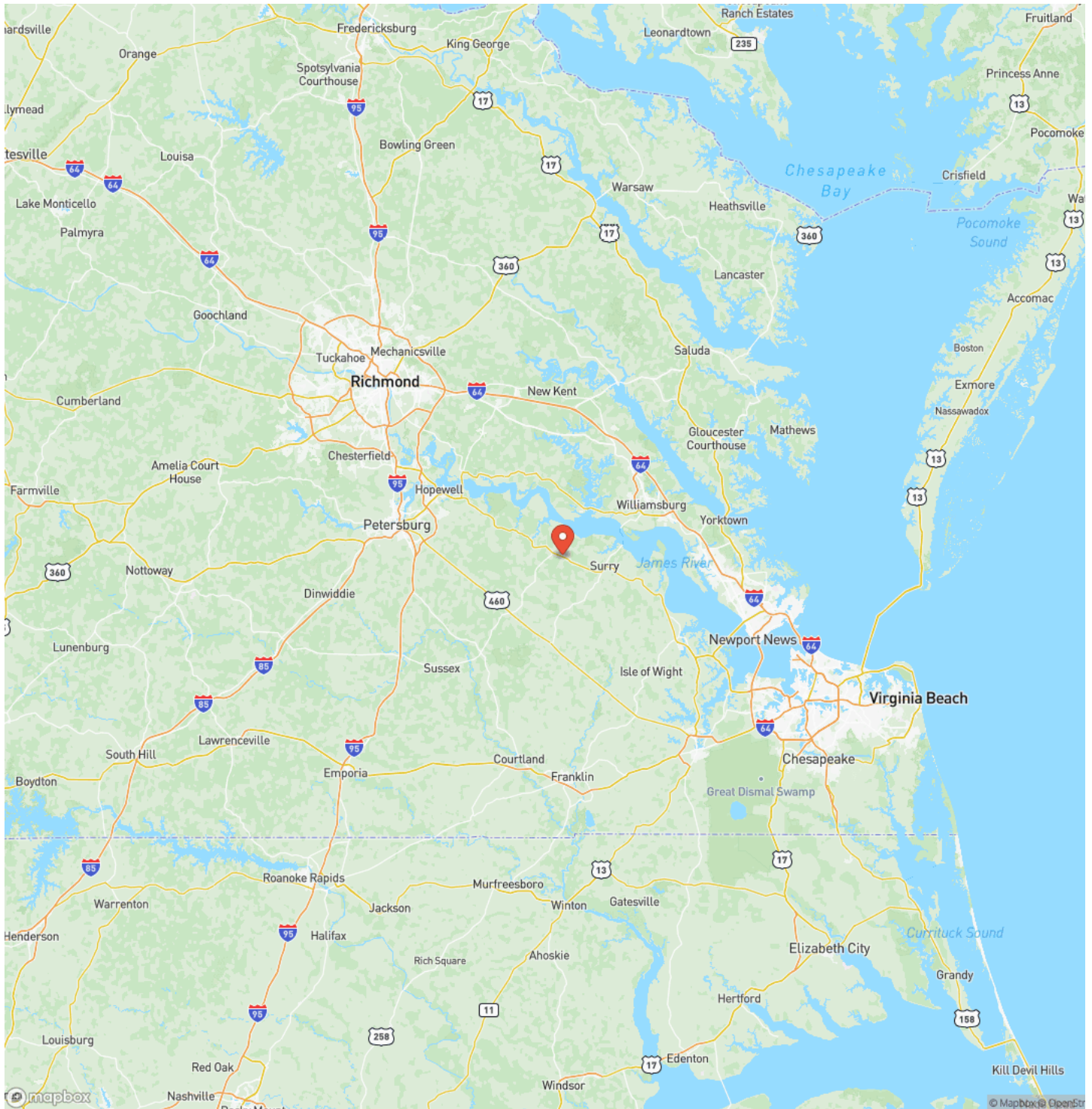


## Locator Map

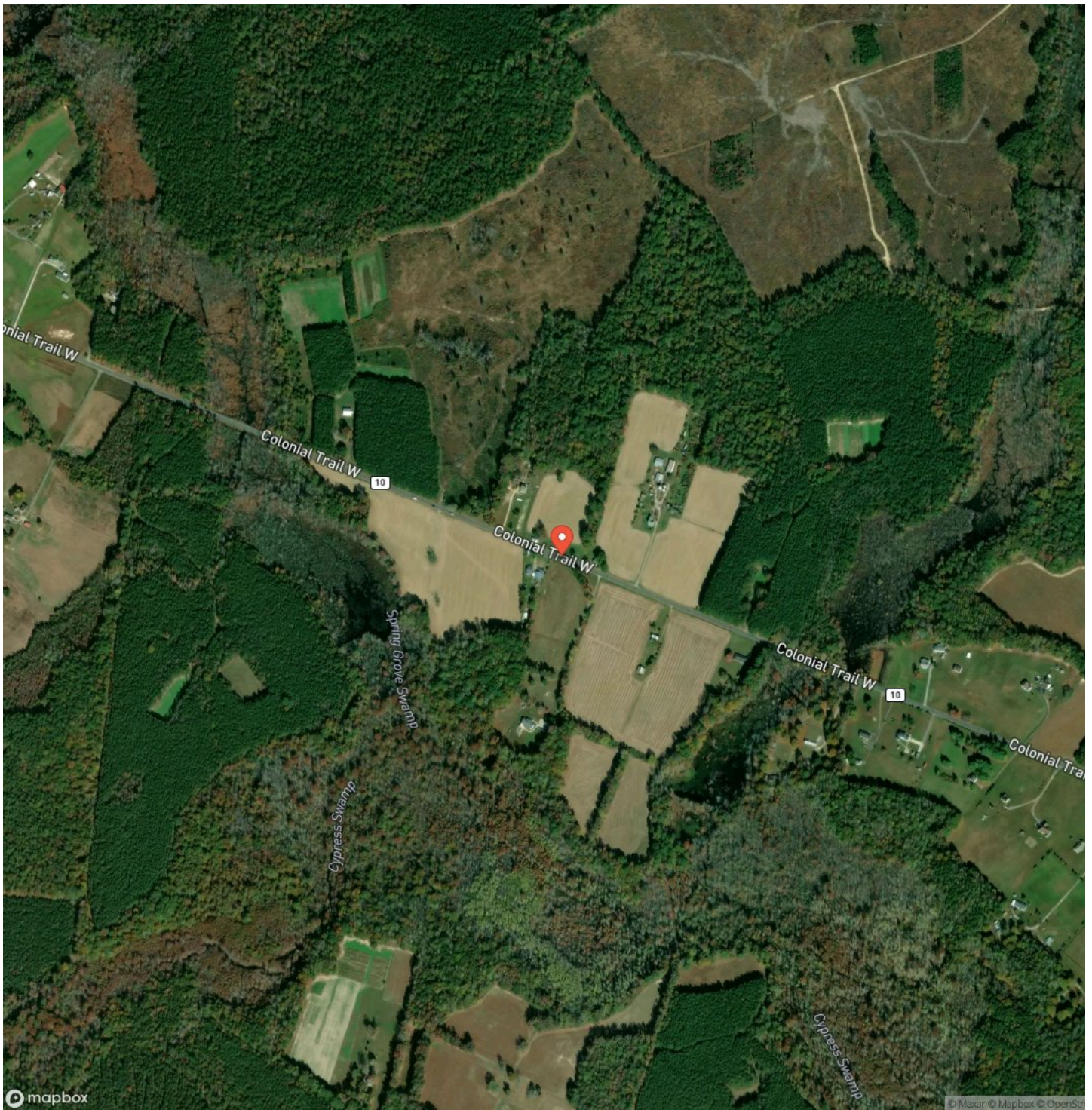


**47 Deeded Acres of Farm, Timber and Hunting Land for Sale in Surry County VA!  
Spring Grove, VA / Surry County**

# Locator Map



## Satellite Map







## **DISCLAIMERS**

Information in this brochure is provided solely for information purposes and does not constitute an offer to sell or advertise real estate outside the states in which broker or agent licensed. The information presented has been obtained from sources deemed to be reliable, but is not guaranteed or warranted by the agent, broker, or the sellers of these properties. This offering is subject to errors, omissions, prior sale, price change, correction or withdrawal from the market without notice. All references to age, square footage, income, expenses, acreage, carrying capacity, and land classification, etc. are approximate. Prospective buyers are chargeable with and expected to conduct their own independent investigation of the information and the property and to rely only on those results. Sellers reserve the right to accept or reject any and all offers without liability to any buyer or cooperating broker.

Maps are provided for illustration purposes only, the accuracy is not warranted. Parcels on interactive maps are not adjusted to match aerial backgrounds. This information is for reference purposes only and is not a legal document. Data maps contain errors. The seller and seller's agent are making known to all potential buyers that there may be variations between the location of the existing fence lines and the legal description of the deeded property. Seller and seller's agent make no warranties with regard to the location of the fence lines in relationship to the deeded property lines, nor does the Seller make any warranties or representations with regard to the specific acreage contained within the fenced property lines. Seller is selling the property in an "as is" condition, which includes the location of the fences as they exist. Boundaries shown on the accompanying maps are approximate, based on county parcel data. The maps are not to scale. The accuracy of the maps is not guaranteed. Prospective buyers are encouraged to verify fence lines, deeded property lines and acreages using a licensed surveyor at their own expense.



---

**Mossy Oak Properties Land and Farms Realty**  
101 Budleigh Street, Suite F  
Manteo, NC 27954  
(844) 480-5263  
<https://www.mossoakproperties.com/>

---

