



# Madison County Lot .50± ACRES IN MADISON, MS



**\$123,000**

**This .50 acre parcel is located on Crawford Street near Rosa Scott Elementary in Madison, MS. Currently zoned R-2, the property is directly in the path of growth in the city of Madison. The possibilities for this property are unlimited for the potential investor/developer. An additional lot is also available and could be put with this property to make a larger lot if that's what is needed. For further information, call Tom today!**

**Directions from I-55 in Madison, MS: Take exit 108 towards Madison/ Main Street. Travel Main Street for .4 miles. Turn right on Jones Street and travel .5 miles. Turn right on Crawford Street and travel .3 miles. The property will be on your right. [Google Map Link](#)**



**TOM  
SMITH**

ALC®, BROKER

Office: 601.898.2772

Cell: 601.454.9397

[Tom@TomSmithLand.com](mailto:Tom@TomSmithLand.com)



**Call The Land Man Today!**

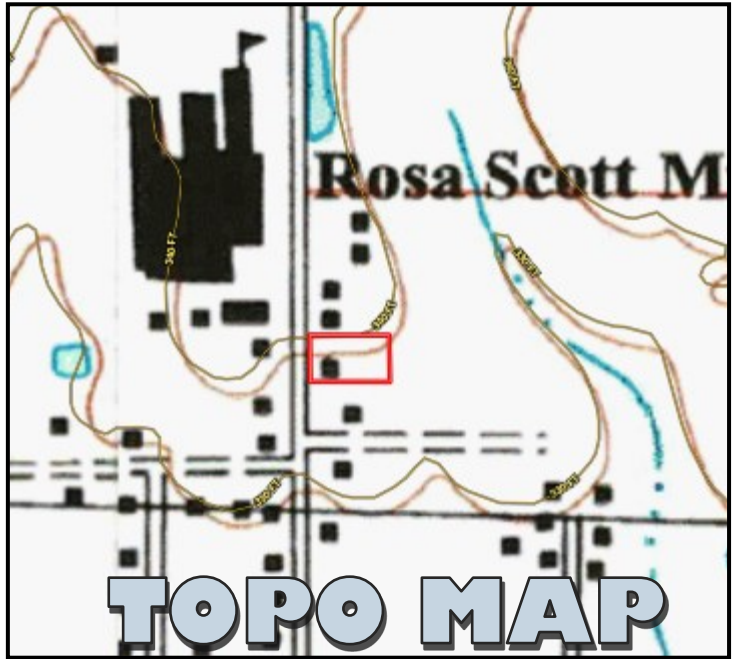
[TomSmithLandandHomes.com](http://TomSmithLandandHomes.com)

Information is believed to be accurate but not guaranteed.





**OWNERSHIP MAP**



**TOPO MAP**



**AERIAL MAP**

[CLICK HERE FOR AN INTERACTIVE MAP](#)

**TOM SMITH**

ALC®, BROKER

Office: 601.898.2772

Cell: 601.454.9397

Tom@TomSmithLand.com



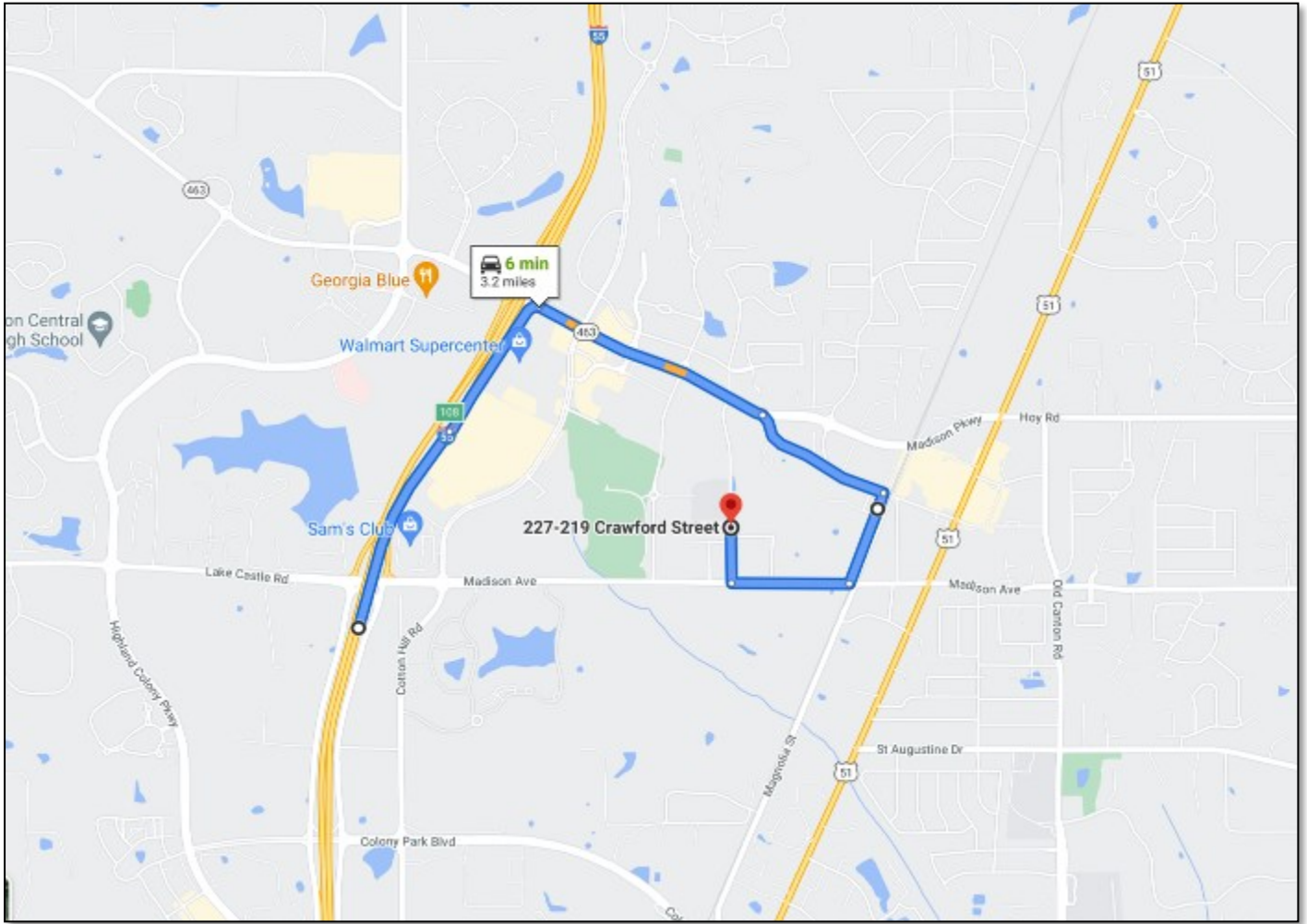
Expect More. Get More.

**Call The Land Man Today!**

TomSmithLandandHomes.com

Information is believed to be accurate but not guaranteed.





## DIRECTIONAL MAP

**Directions from I-55 in Madison, MS: Take exit 108 towards Madison/ Main Street. Travel Main Street for .4 miles. Turn right on Jones Street and travel .5 miles. Turn right on Crawford Street and travel .3 miles. The property will be on your right. [Google Map Link](#)**



**TOM SMITH**

ALC®, BROKER

Office: 601.898.2772

Cell: 601.454.9397

Tom@TomSmithLand.com



Expect More. Get More.

**Call The Land Man Today!**

TomSmithLandandHomes.com

Information is believed to be accurate but not guaranteed.

